

ELDERSFIELD CP

CHACELEY

TIRLEY CP

HASFIELD CP

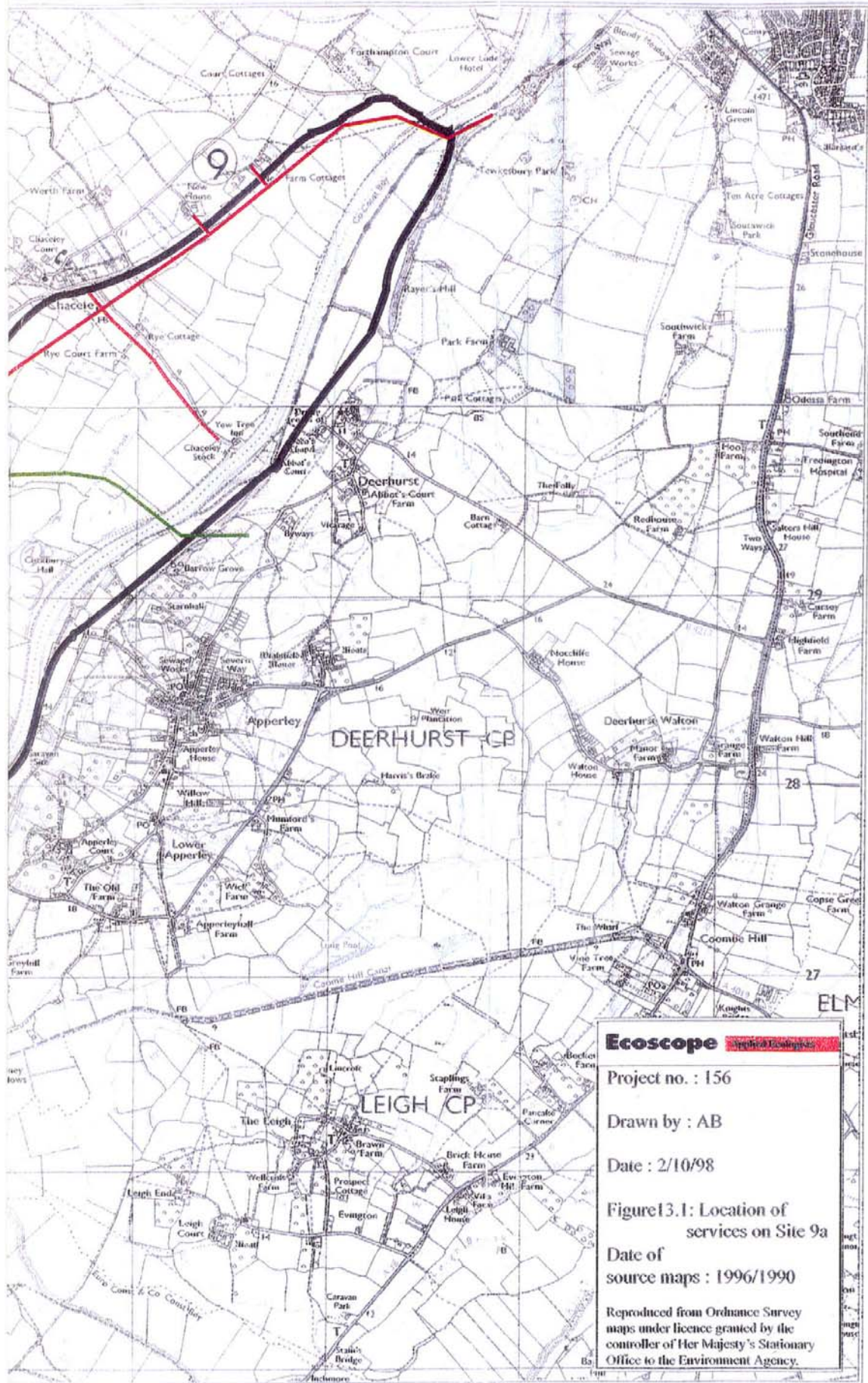
ASHLEWORTH

230

225

385

380



Ecoscope Applied Ecologists

Project no. : 156

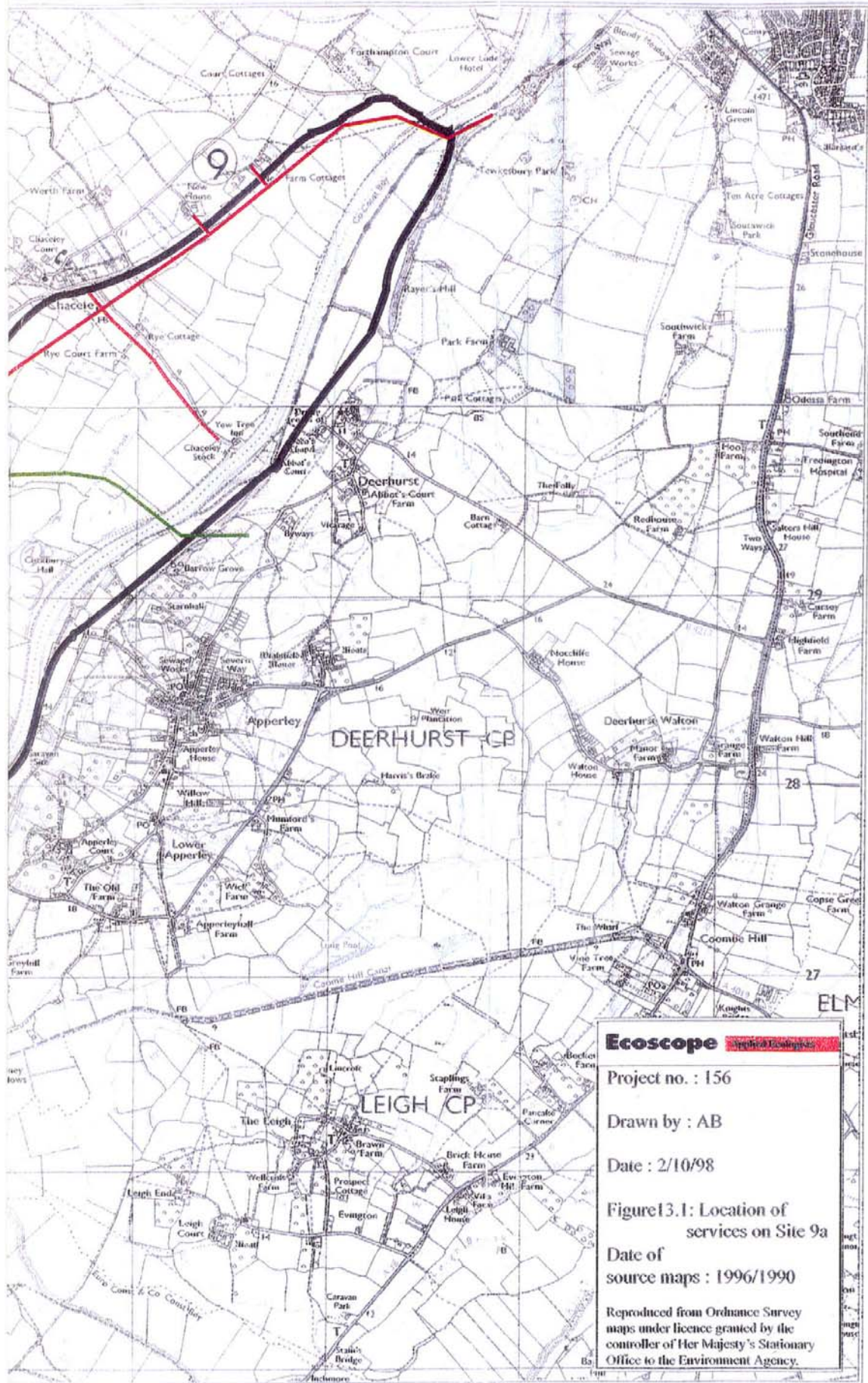
Drawn by : AB

Date : 2/10/98

Figure 13.1: Location of services on Site 9a

Date of source maps : 1996/1990

Reproduced from Ordnance Survey maps under licence granted by the controller of Her Majesty's Stationary Office to the Environment Agency.



Ecoscope Applied Ecologists

Project no. : 156

Drawn by : AB

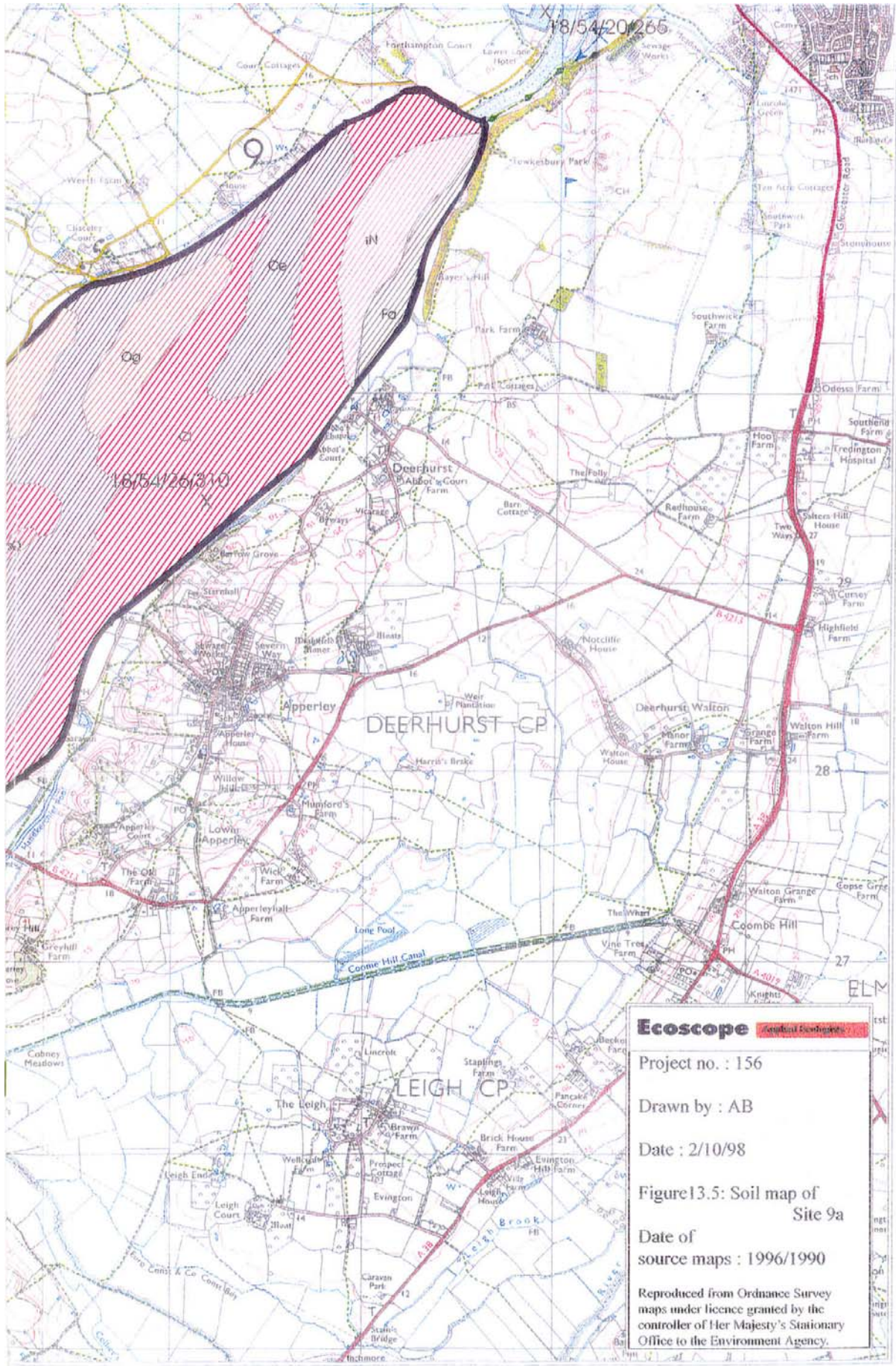
Date : 2/10/98

Figure 13.1: Location of services on Site 9a

Date of source maps : 1996/1990

Reproduced from Ordnance Survey maps under licence granted by the controller of Her Majesty's Stationary Office to the Environment Agency.





Ecoscope Geological Engineering

Project no. : 156

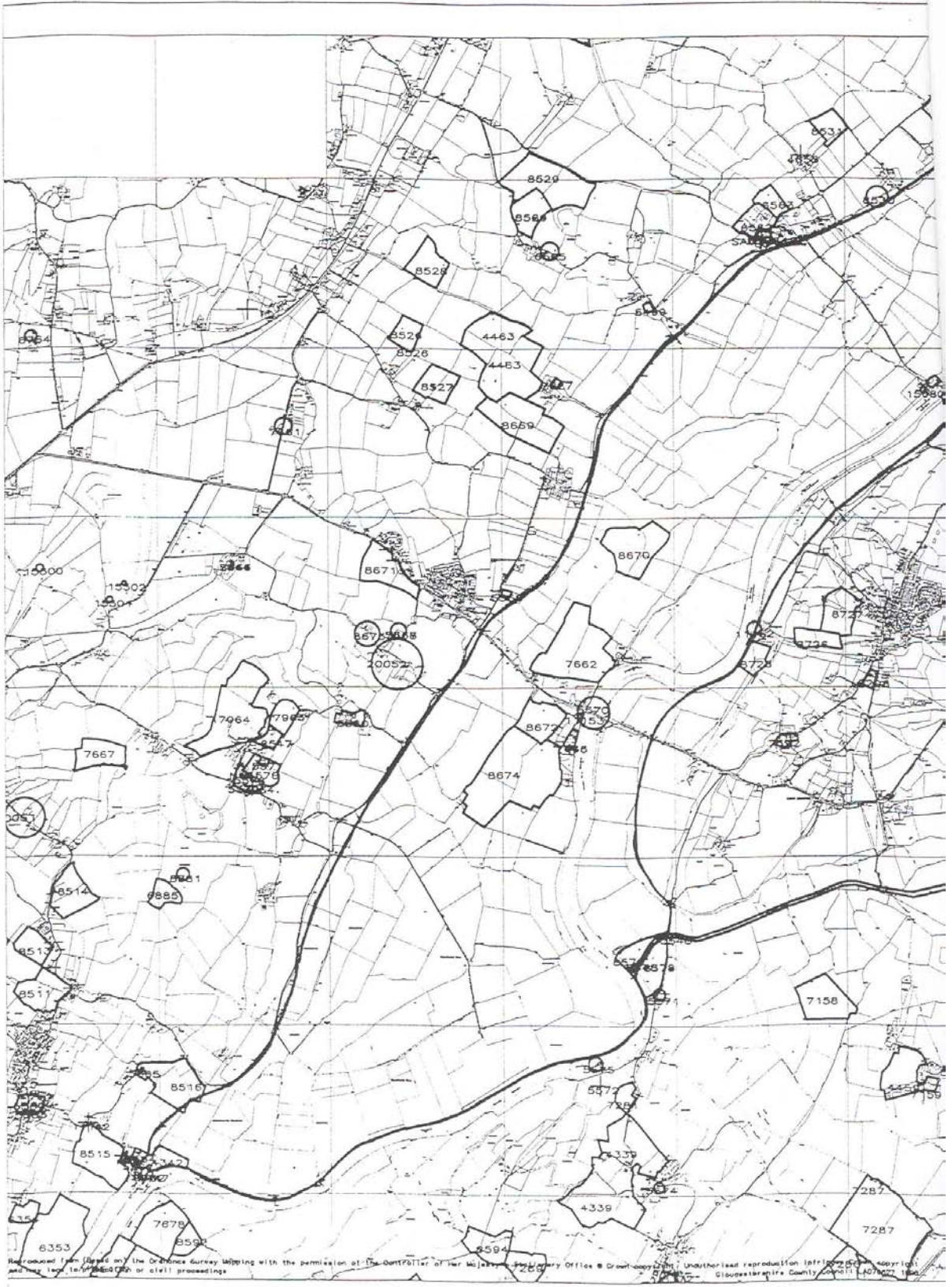
Drawn by : AB

Date : 2/10/98

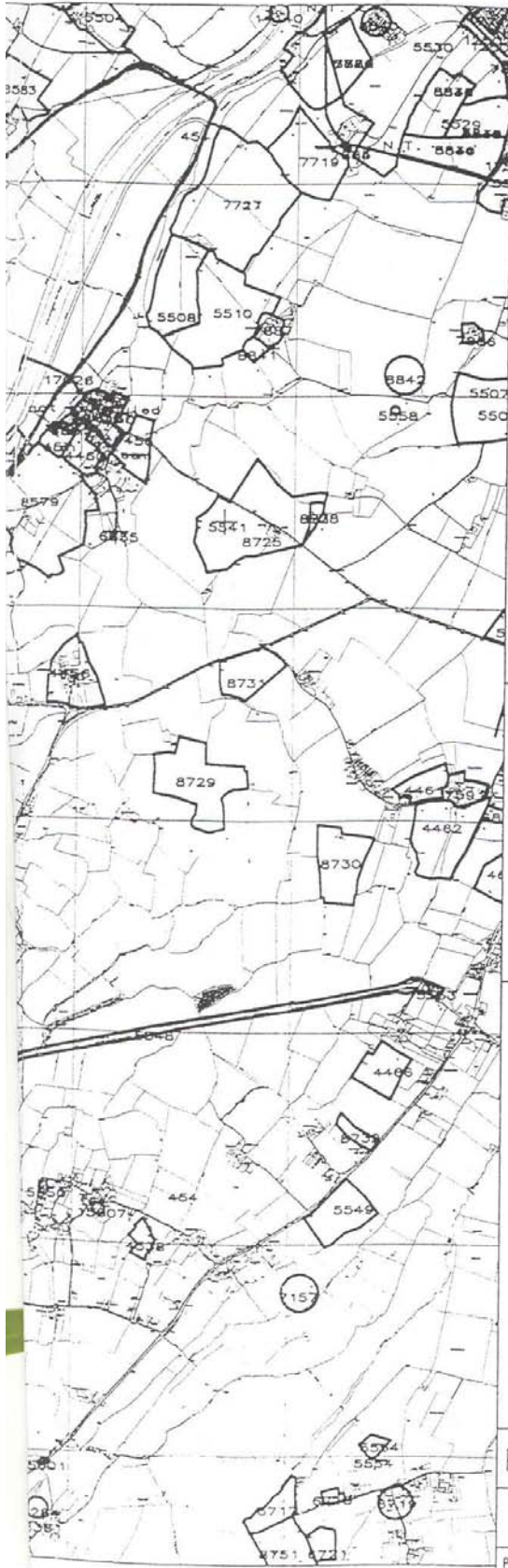
Figure 13.5: Soil map of Site 9a

Date of source maps : 1996/1990

Reproduced from Ordnance Survey maps under licence granted by the controller of Her Majesty's Stationary Office to the Environment Agency.



Reproduced from (based on) the Ordnance Survey Mapping with the permission of The Controller of Her Majesty's Stationery Office. No part of this publication may be reproduced, stored in a retrieval system, or transmitted in any form or by any means, electronic, mechanical, photocopying, recording, or by any information storage or retrieval system, without the prior written permission of the Controller of Her Majesty's Stationery Office. Gloucestershire County Council, 1997.



SHIRE HALL
GLOUCESTER
GL1 2TG

TEL: (01452) 425000

LEGEND

- Scheduled Ancient Monuments
- SMR AREA/LINE FEATURES
- ⊗ SMR POINT FEATURES

Ecoscope Area 9A.

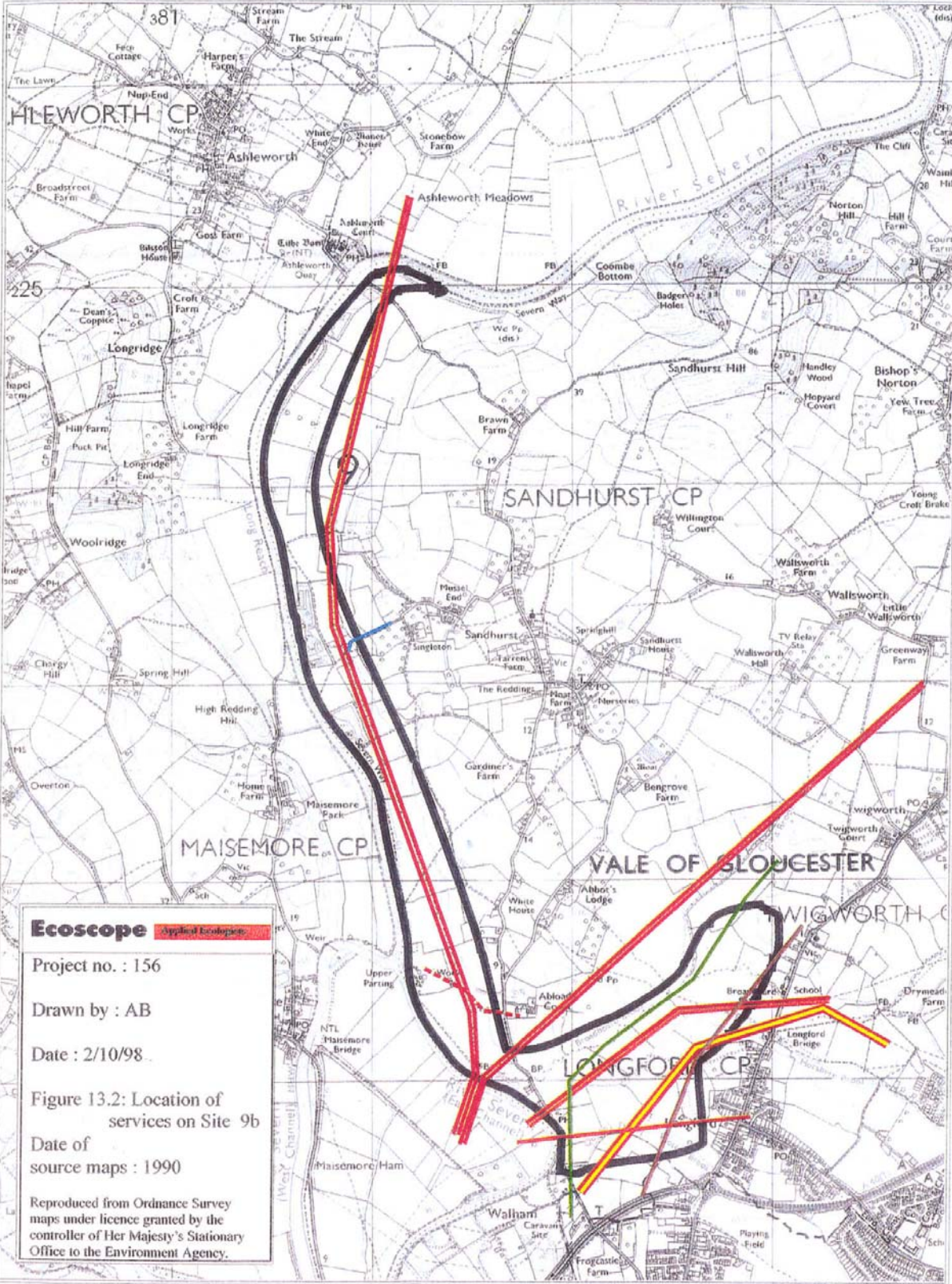
Range: 7884 m

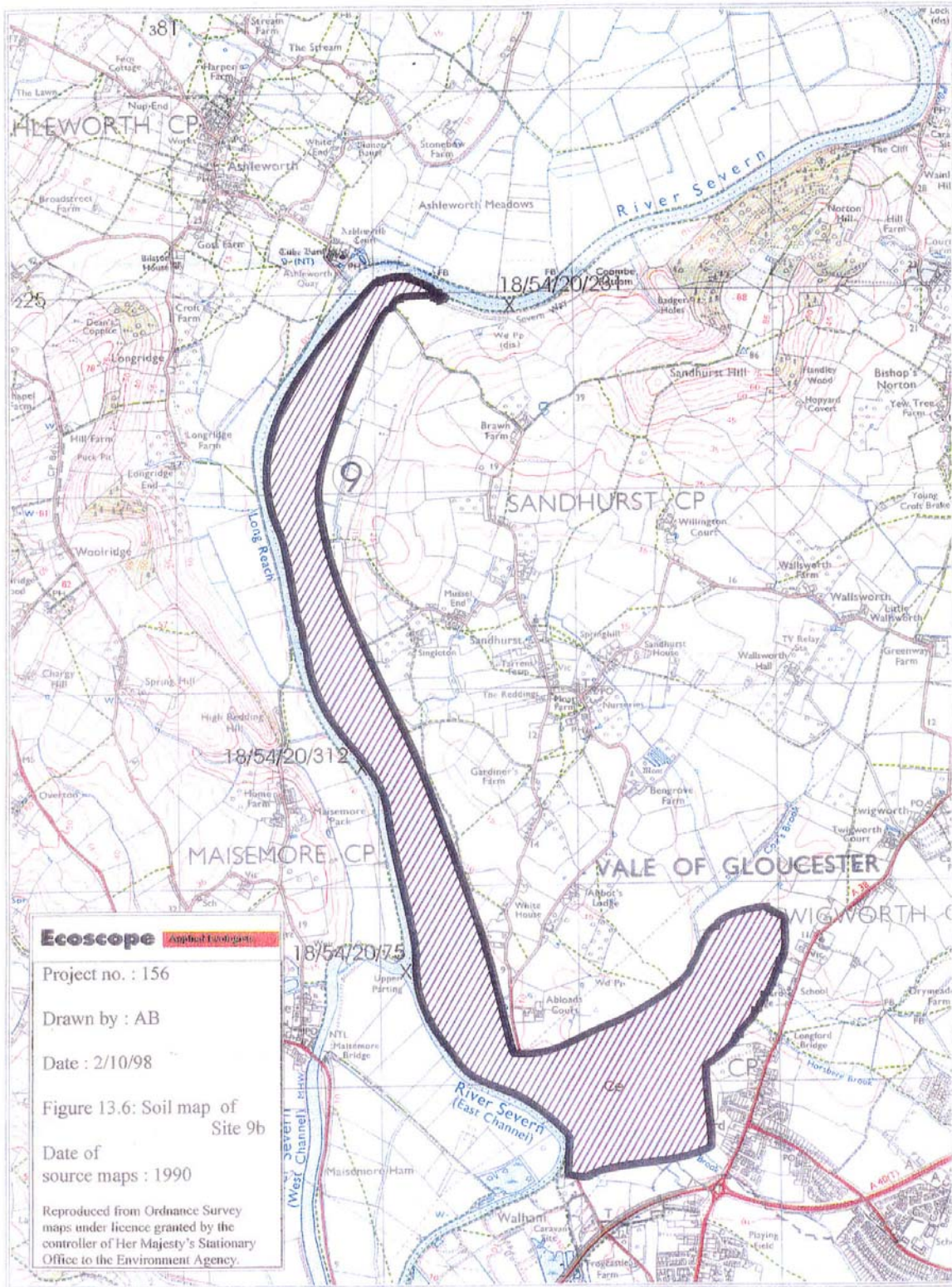
Figure 13.3

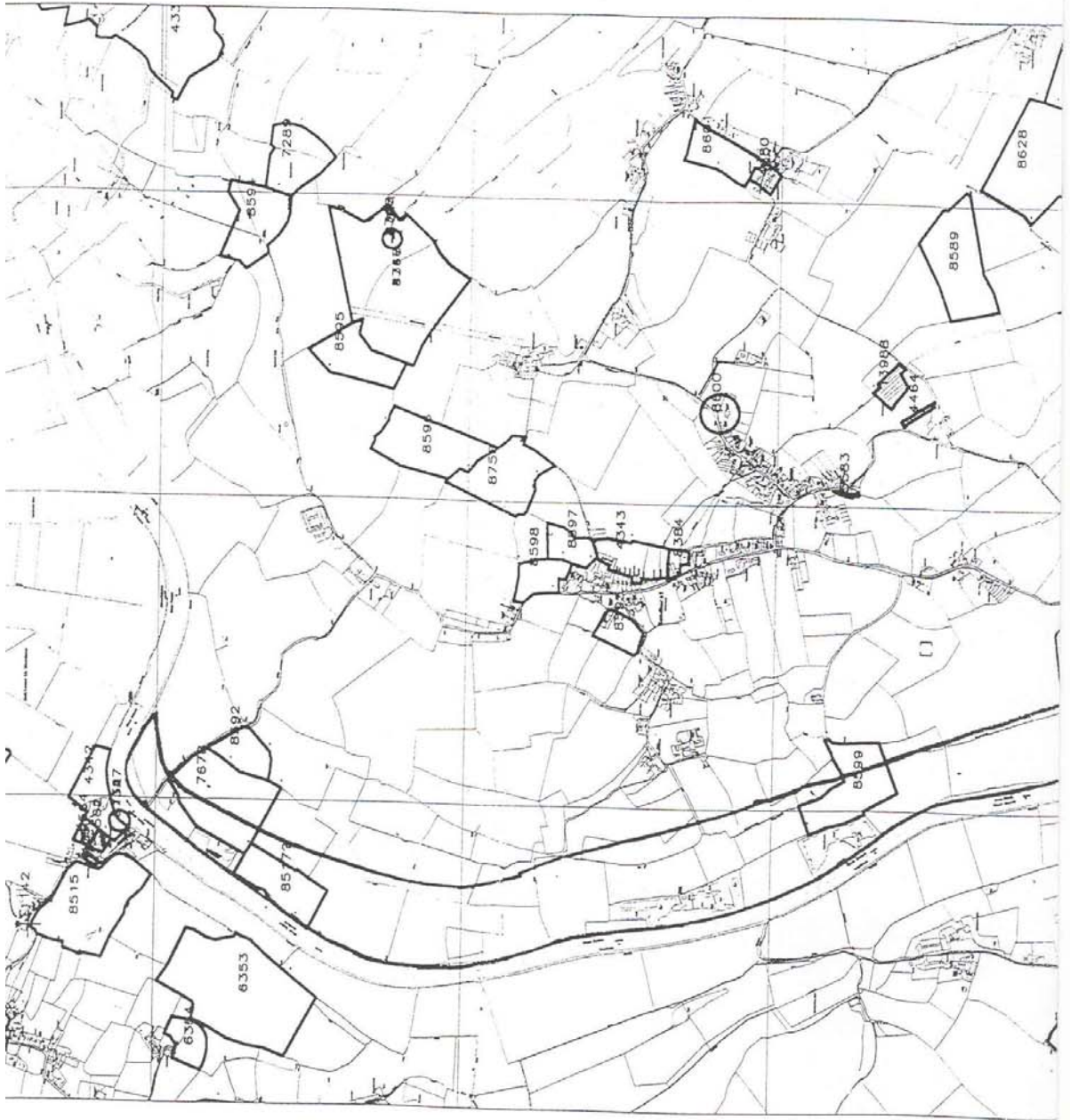
Produced by:- Tim Clark

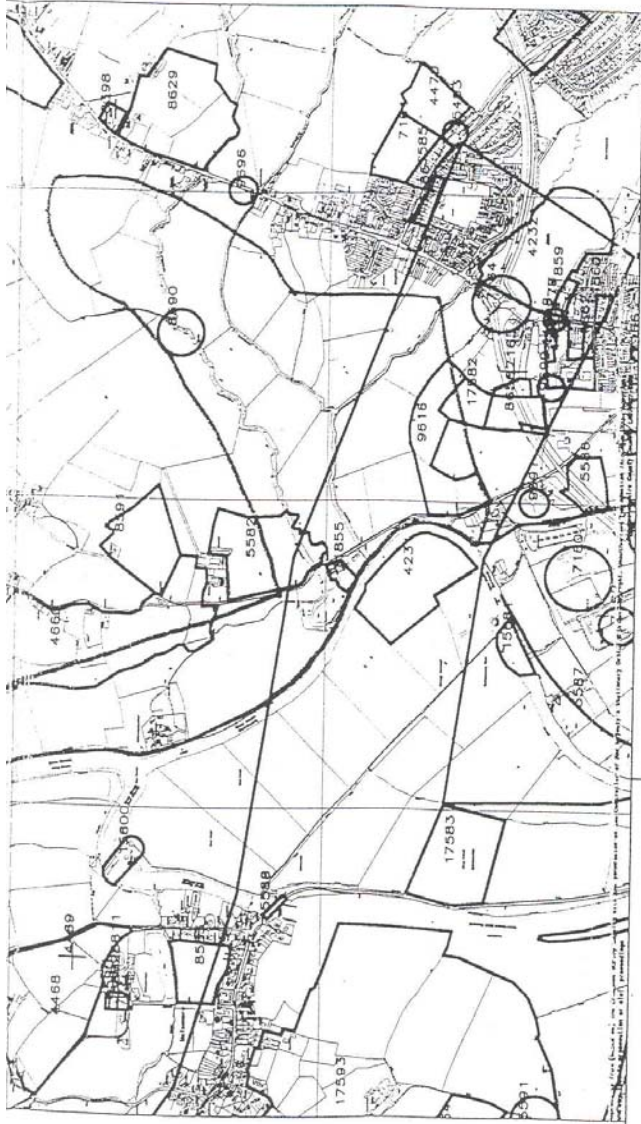
Date:- 6th October, 1996

SHEET No.









LEGEND

- Scheduled Ancient Monuments
- SMR AREA/LINE FEATURES
- ✱ SMR POINT FEATURES

SHIRE HALL
GLOUCESTER
GL1 2TG

TEL: (01 452) 425000

Range: 3610 m

Figure 13.4

Produced by:- Tim Crabb

Date:- 6th October, 1998

SHEET No.

Ecoscope Area 9B.