



Improving nature



Pictures by Ian Trueman, Mike Poulton, Sue Collingswood, Anne Daly and others, copyright via B&BC Botanical Society

Improving connectivity in Birmingham and the Black Country Ian Trueman



Birmingham & Black Country

This project has been supported by Defra, DCLG, Environment Agency, Forestry Commission and Natural England.



Department
for Environment
Food & Rural Affairs

SJ

SK

0

9

8

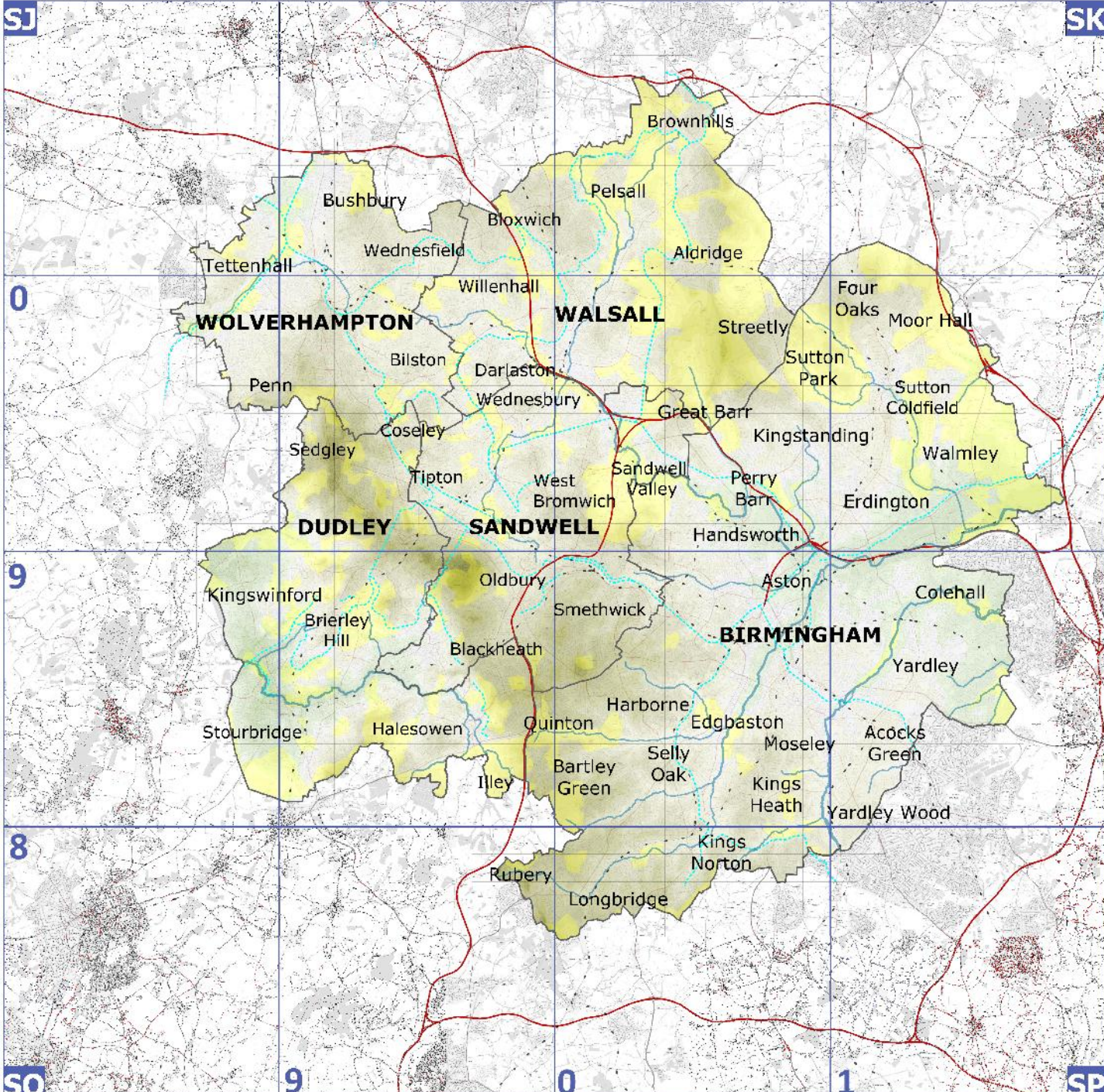
SO

9

0

1

SP



WOLVERHAMPTON

WALSALL

DUDLEY

SANDWELL

BIRMINGHAM

Brownhills
 Bushbury
 Bloxwich
 Pelsall
 Aldridge
 Tettenhall
 Wednesfield
 Willenhall
 Darlaston
 Wednesbury
 Great Barr
 Kingstanding
 Erdington
 Walmley
 Sutton Park
 Sutton Coldfield
 Moor Hall
 Four Oaks
 Penn
 Bilston
 Coseley
 Tipton
 West Bromwich
 Sandwell Valley
 Perry Barr
 Handsworth
 Aston
 Colehall
 Yardley
 Brierley Hill
 Blackheath
 Smethwick
 Harborne
 Edgbaston
 Moseley
 Acoccks Green
 Kings Heath
 Yardley Wood
 Kings Norton
 Longbridge
 Rubery
 Illey
 Bartley Green
 Selly Oak
 Halesowen
 Stourbridge
 Kingswinford
 Oldbury
 Quinton

SJ

Birmingham and Black Country

SK

vc. 39 [Staffordshire]



9

8

SO

9

0

1

SP

vc. 37 [Worcestershire]

vc. 38 [Warwickshire]

Birmingham & Black Country



EcoRecord

the ecological database
for Birmingham and the Black Country

EcoRecord is the biological record centre for Birmingham and the Black Country (Dudley, Sandwell, Walsall & Wolverhampton).

EcoRecord collects, collates and makes available information about the wildlife, wildlife sites and habitats of Birmingham and the Black Country and currently has over 500,000 species records on its database. Records come from many sources, ranging from professional ecologists, to amateur expert naturalists, to other wildlife enthusiasts. For more information please visit <http://www.ecorecord.org.uk> or telephone 0121 454 1808.

SJ

Birmingham and Black Country

SK

0

9

8

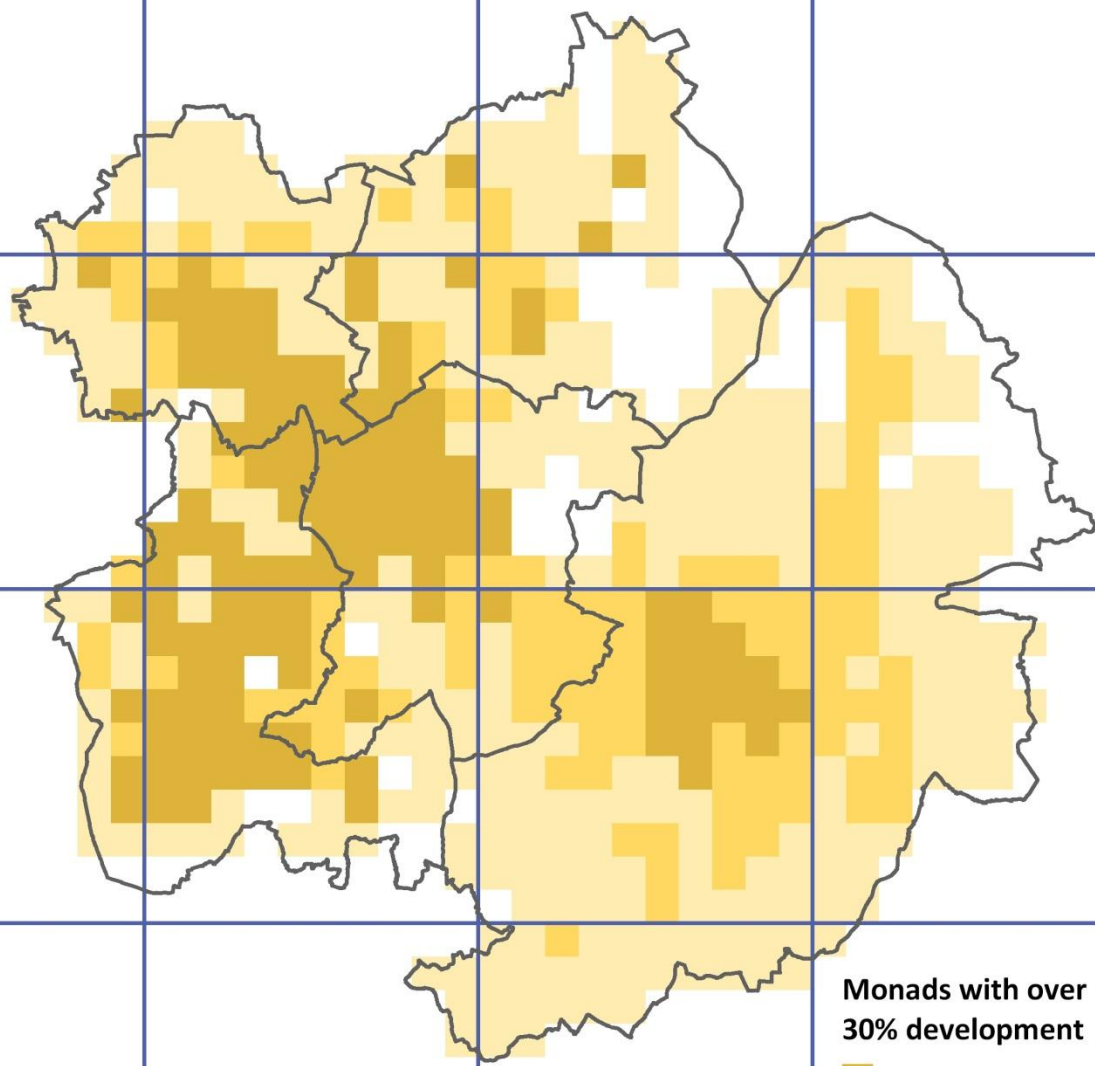
SO

9

0

1

SP



Monads with over 30% development

- 1830s
- 1920s
- 2000s



© Crown Copyright. All Rights Reserved.
University of Wolverhampton Licence No 100018325 (2003)















SJ

Birmingham and Black Country

SK

0

9

8

Total area of streams and rivers

SO

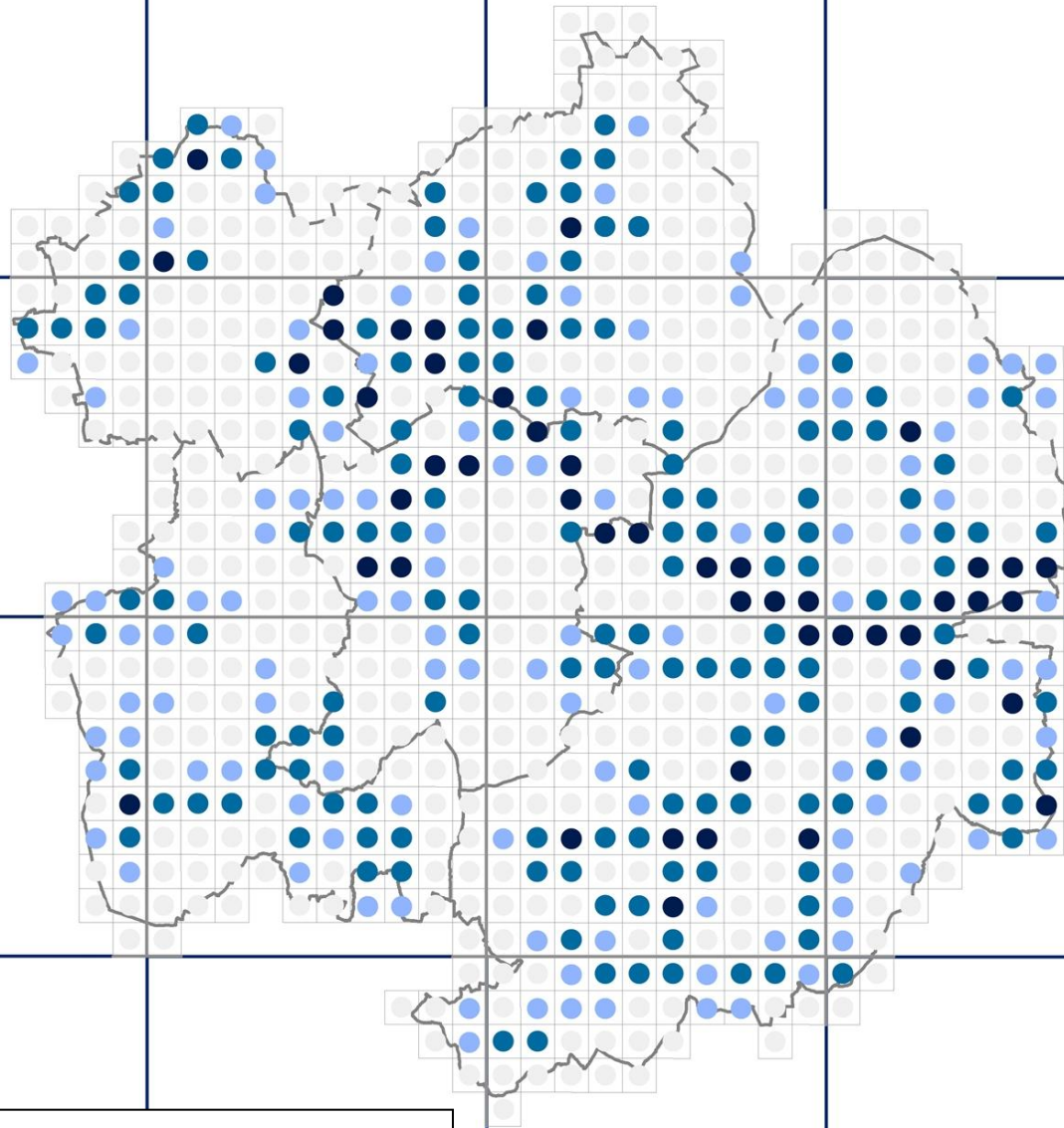
Reproduced from the Ordnance Survey mapping with permission of the Controller of Her Majesty's Stationery Office. © Crown Copyright. Unauthorised reproduction infringes Crown copyright and may lead to prosecution or civil proceedings. Licence number LA 08946L. © 2010 © EcoRecord 2010

SP

9

0

1



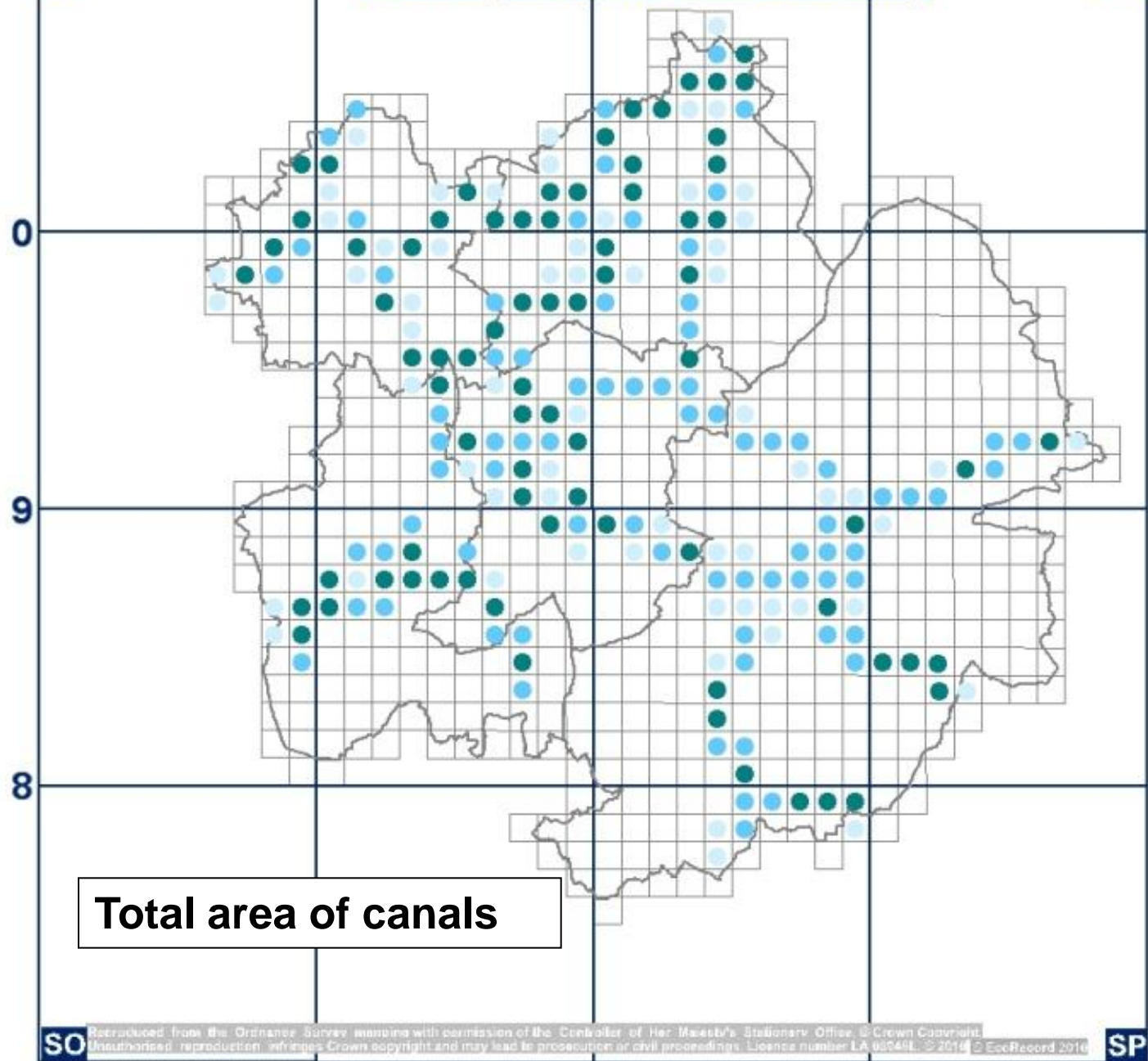




SJ

Birmingham and Black Country

SK



Total area of canals

SO

Reproduced from the Ordnance Survey mapping with permission of the Controller of Her Majesty's Stationery Office. © Crown Copyright. Unauthorised reproduction infringes Crown copyright and may lead to prosecution or civil proceedings. Licence number LA 00049L. © 2010 © EcoRecord 2010

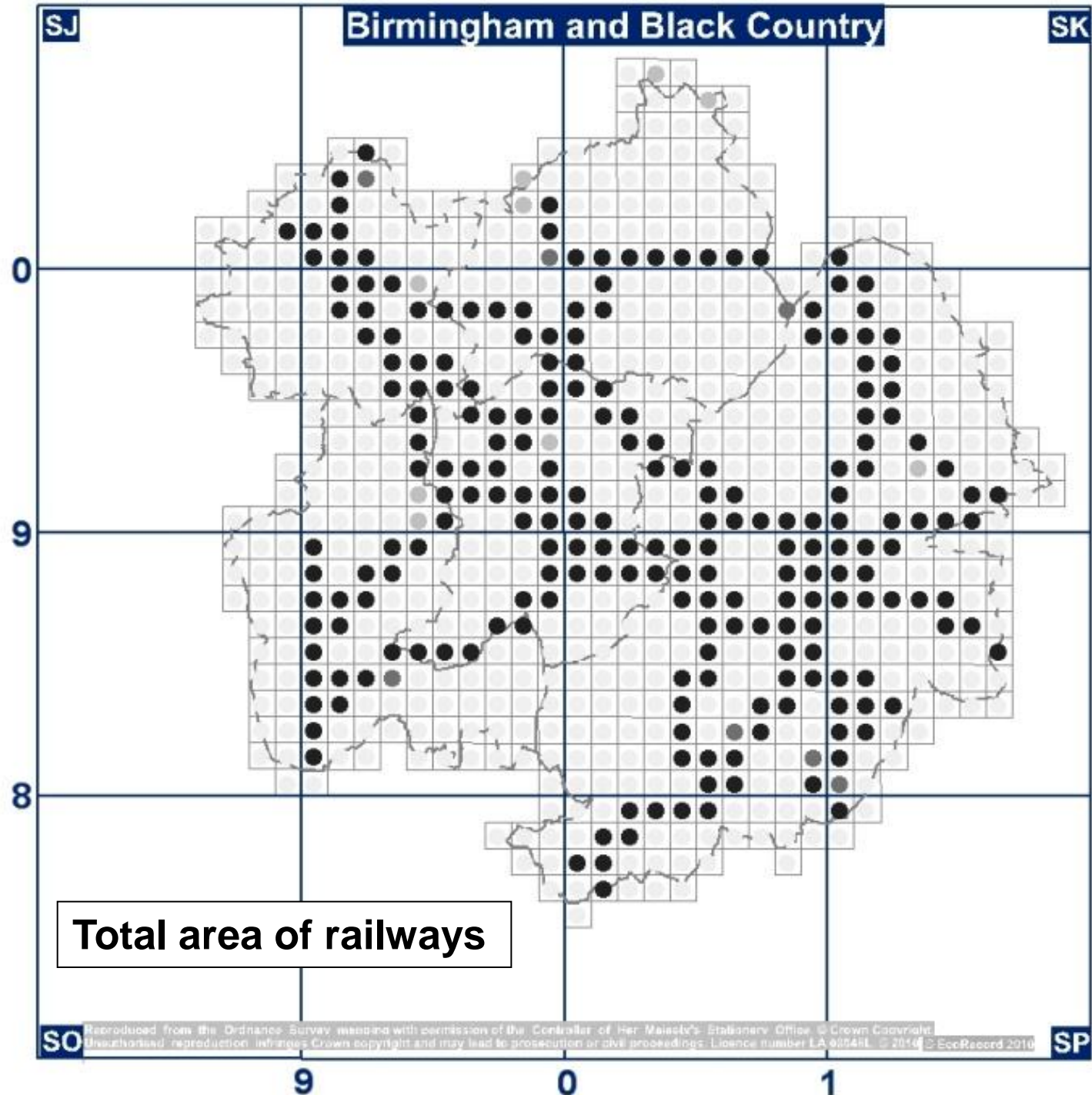
SP

9

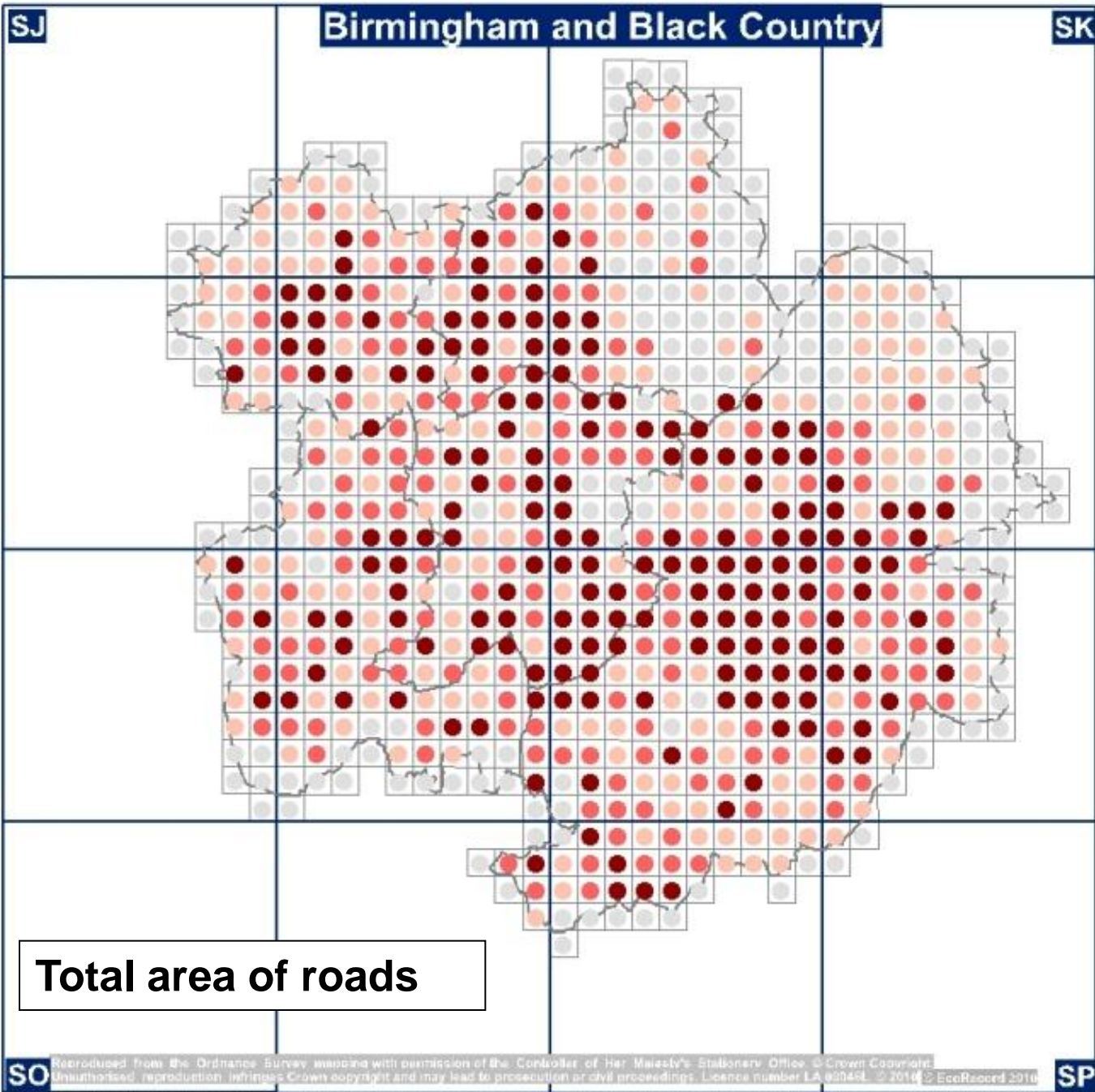
0

1





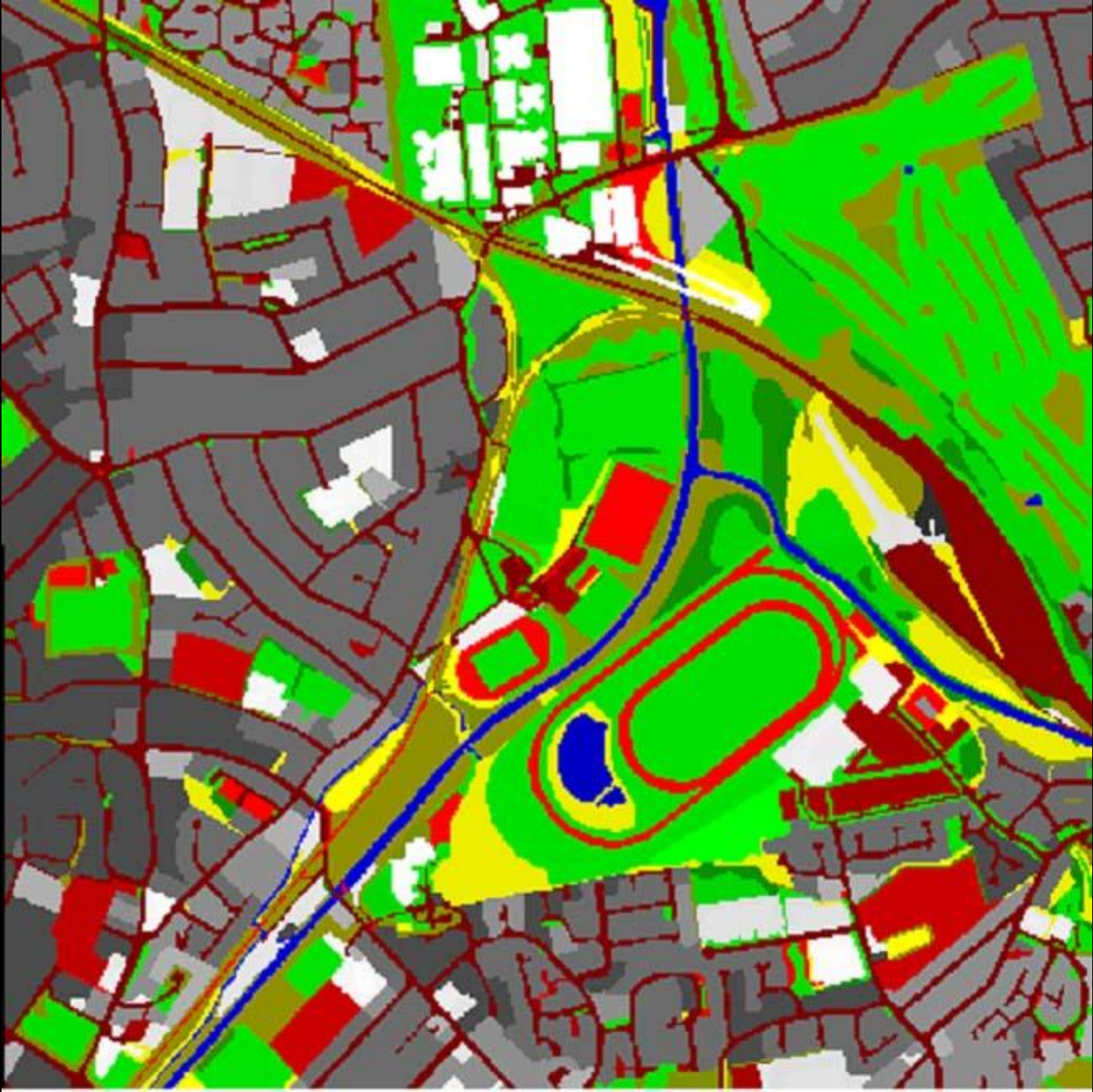














CAR WASH
CUSTOMERS

NO PARKING

CAR
CUST

OU
TR

SJ

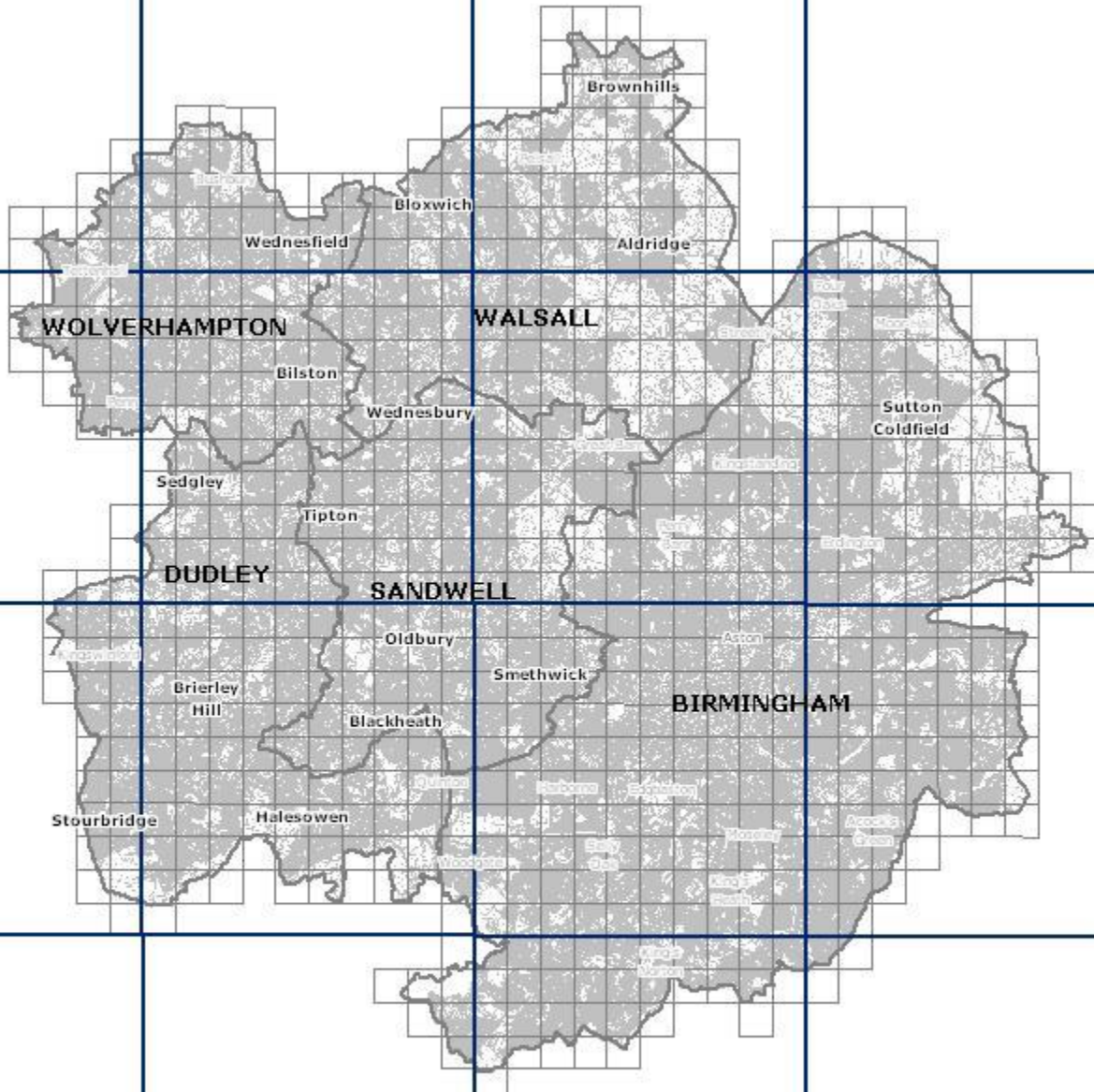
Birmingham and Black Country

SK

0

9

8



SO

Reproduced from the Ordnance Survey mapping with permission of the Controller of Her Majesty's Stationery Office. © Crown Copyright. Unauthorized reproduction infringes Crown copyright and may lead to prosecution or civil proceedings. Licence number LA 08946 L. © 2010

© EcoRecord 2010

SP

0

0

1



MARTELL TIMBER LTD Tel 0121 753 3188
www.marshalltimber.co.uk Fax 0121 753 3137

CRANE HIRE

SHOK

JONAS
VIDE PONA
30



Toyota World

TOYOTA



burchell
edwards

SOLD IT!

www.burchelledwards.com

18

Flora of Birmingham and the Black Country

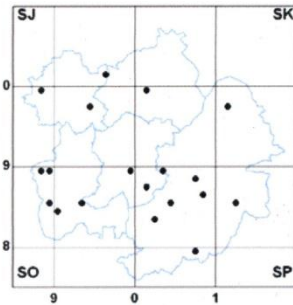


Ian Trueman, Mike Poulton & Paul Reade



margins of many of the canals, lakes and ponds throughout the conurbation where it frequently forms dense colonies. Also a popular introduction in planting schemes causing confusion as to its true native status in some places. Displays a wide degree of tolerance to water conditions and sometimes forms pure stands in the absence of other marginals, but apparently requires at least an intermediate base and nutrient status. Considerably more frequent than in the 1970s Floras. Ass: *Alisma lanceolatum*, *Butomus umbellatus*, *Epilobium hirsutum*, *Sagittaria sagittifolia*, *Sparganium erectum*, *Typha latifolia*.

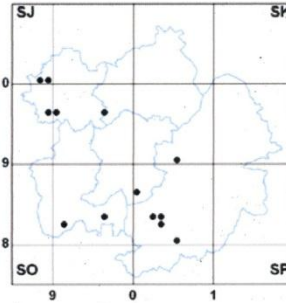
***Iris foetidissima* L.**
Stinking Iris



19. Native. A perennial herb, the few scattered records in isolation suggest this species is no more than an introduction in B&BC. Individual clumps or small patches have been recorded, sometimes but not always in the shade and on moderately fertile and base-rich soil, from municipal parks, waste ground close to gardens, track verges, hedgerows, several canal towpaths, banks of the Rivers Stour and Rea, Ham Dingle. Ass: *Brachypodium sylvaticum*, *Campanula trachelium*, *Conium maculatum*, *Dipsacus fullonum*.

***Crocus vernus* (L.) Hill**
Spring Crocus

13. Neophyte. A cormous perennial herb. The most commonly grown species which includes several showy cultivars such as 'Pickwick', 'Remembrance', 'King of the Whites' and 'Little Dorrill'. Abundantly grown, and planted on many graves and often spreading into surrounding grassland in most of the churchyards throughout the conurbation, where, in early spring it displays showy patches of white, purple and purple-white, bi-coloured flowers. Also regularly discarded into grassy patches and bits of waste ground near houses where

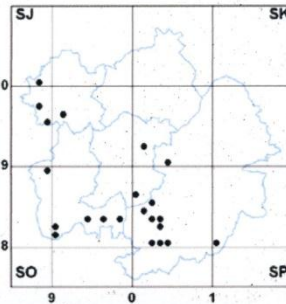


it persists without showing much sign of spread. Undoubtedly under-recorded due to the earliness of flowering and withering of foliage and doubts about whether plantings are deliberate. Many records for *Crocus* sp. belong here but have not been included in the map. S & C Europe.

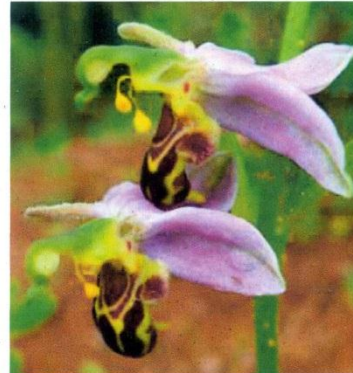
***Crocus chrysanthus* (Herb.) Herb.**
Golden Crocus

2. Neophyte. Cormous herb. Recorded, rarely, in sites marginal to cultivation. Naturalised in a churchyard, West Bromwich (SP0192, A. Underhill, 1996); plentiful in grassy verge, Woodlands Walk, Penn (SO895959, CBW, 2007). Balkans and Turkey.

***Crocus tommasinianus* Herb.**
Early Crocus



22. Neophyte. A cormous herb, readily spreading by seed from original garden plantings into grassy roadside verges, lawns, garden paths and paving, roadside banks and patches of woodland. Also a rapid coloniser from original plantings in grassy areas between graves in many of the churchyards in B&BC. Likely to be under-recorded due to the earliness of its flowering and withering of foliage later in



▲ *Ophrys apifera*



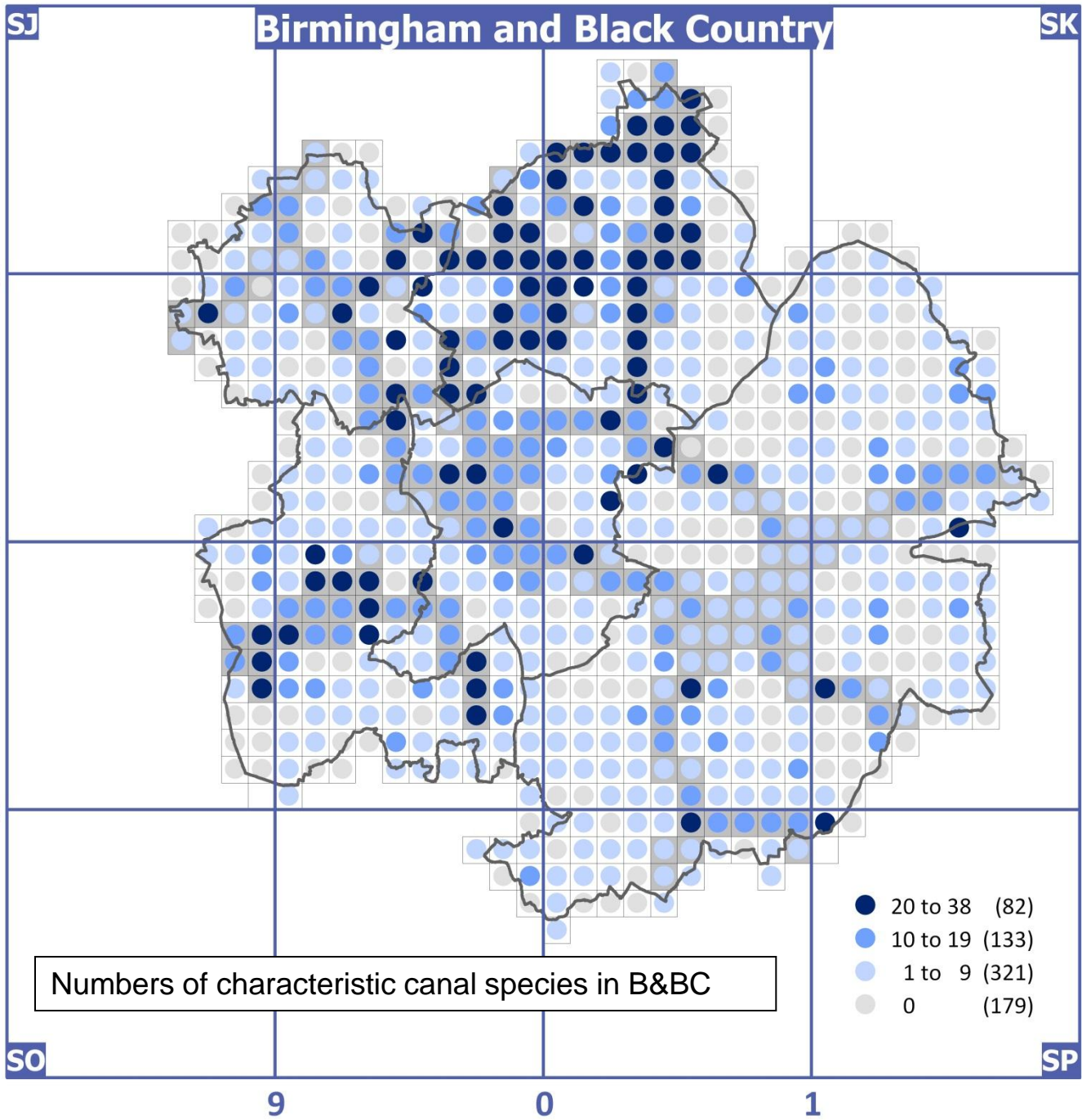
▲ *Sisyrrinchium montanum*

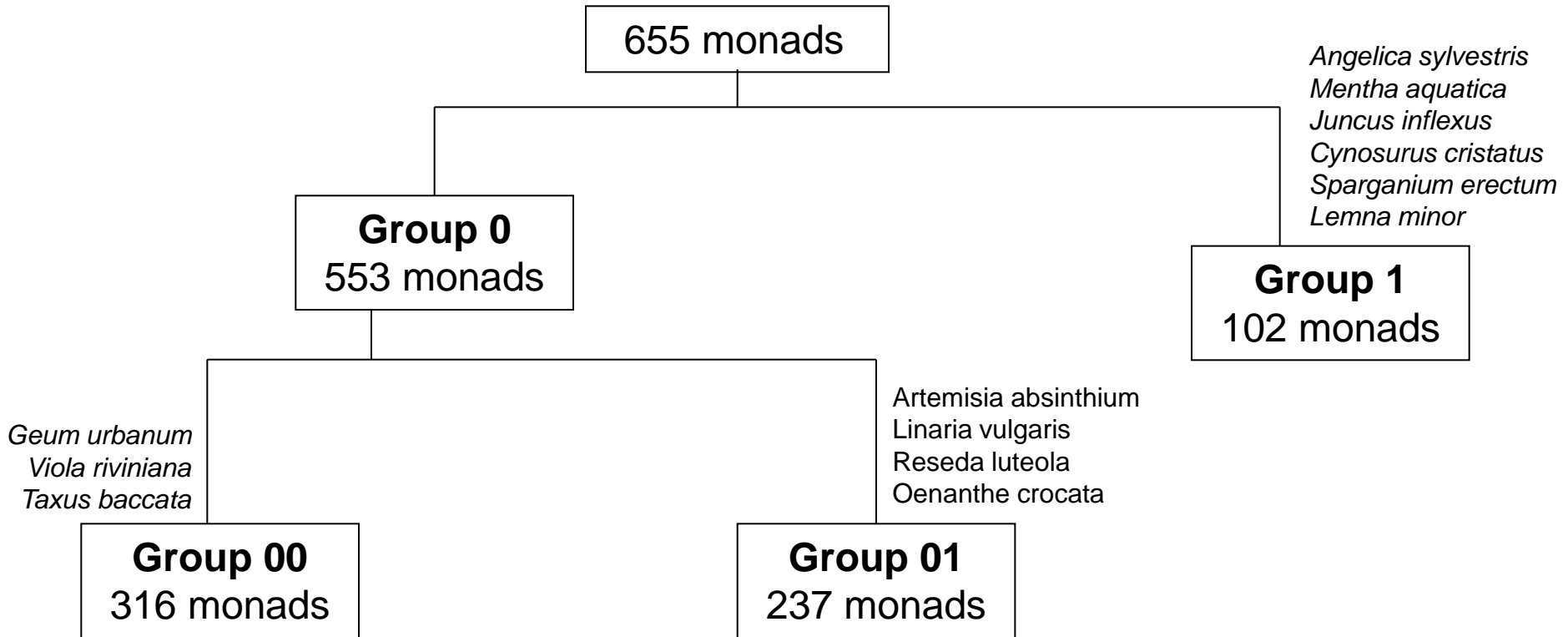


▲ *Iris foetidissima*

Flora database

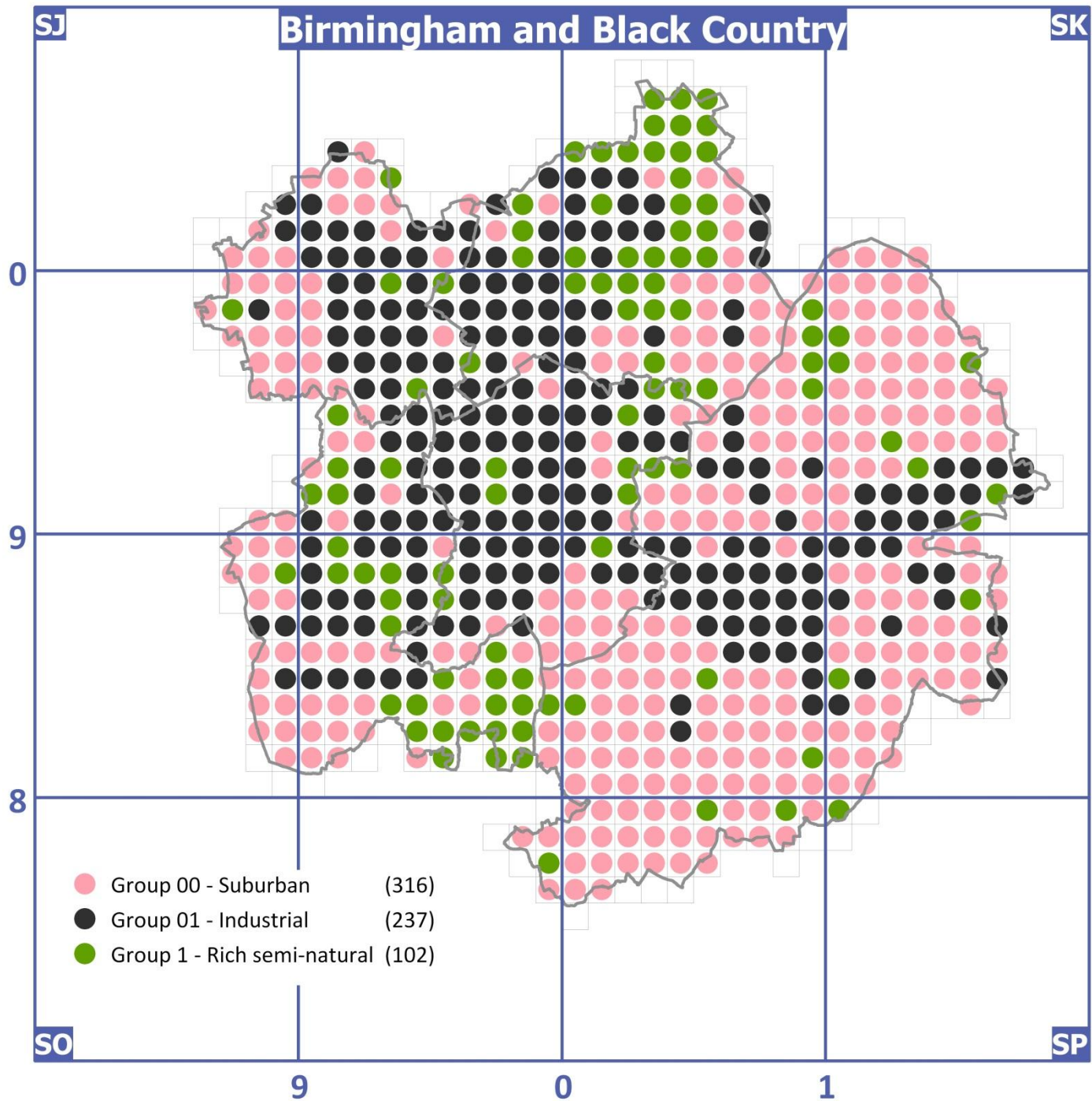
- Recording period 1995-2012
- A total of nearly 240,000 records about 1902 taxa
- From an area of circa 625 square kilometres spread over 715 monads
- Database for analysis is 1449 taxa x 715 monads

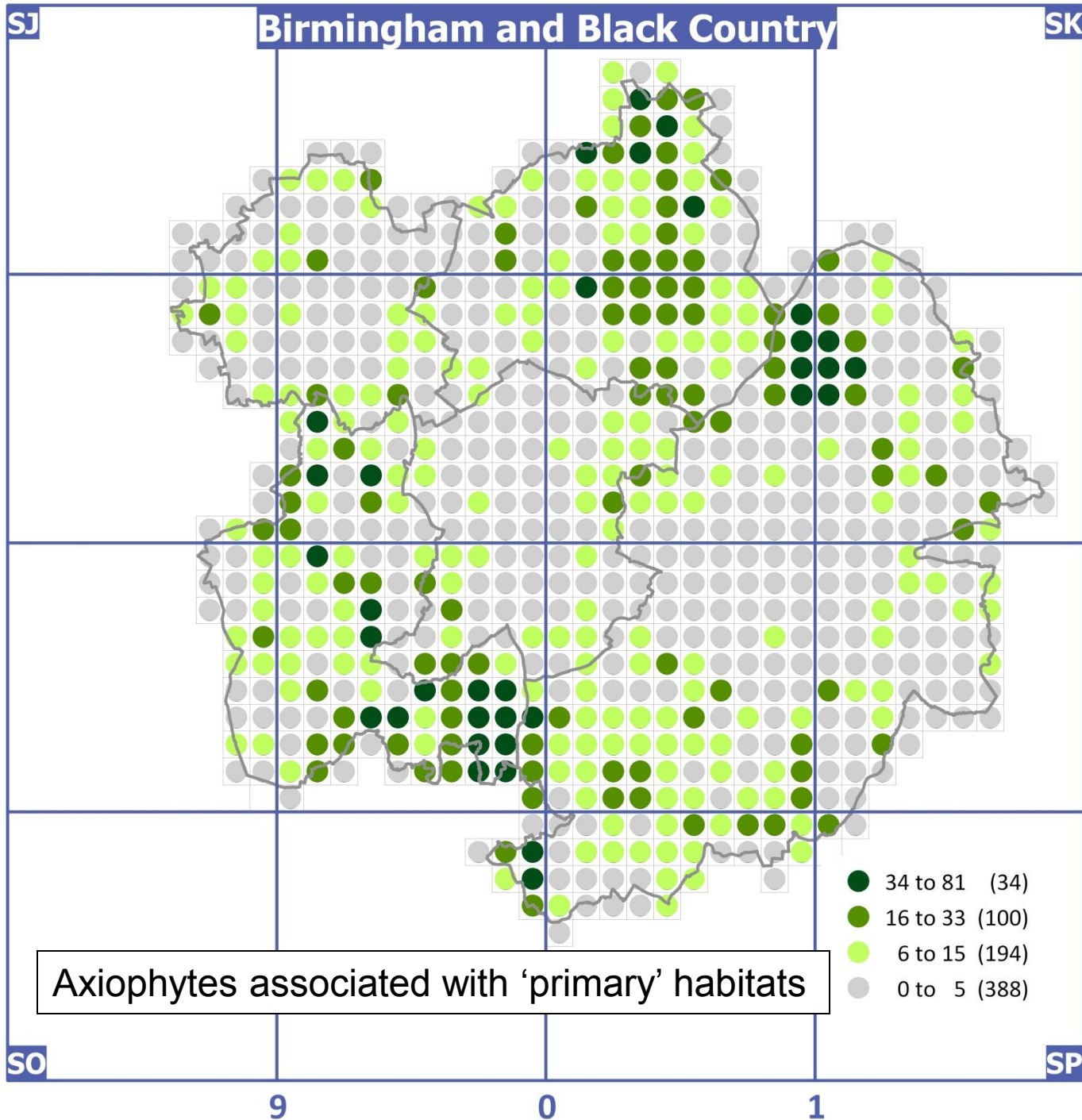


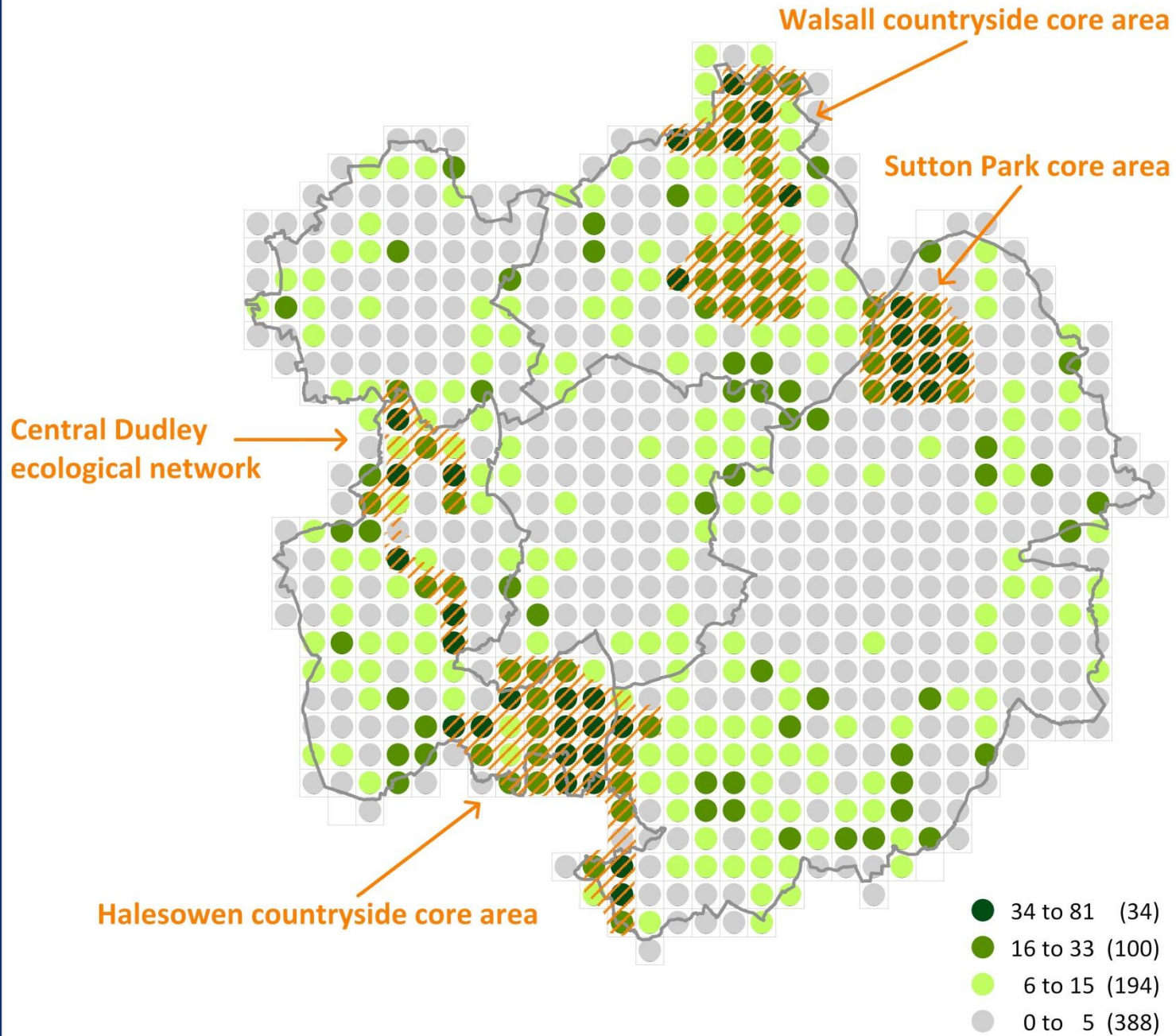


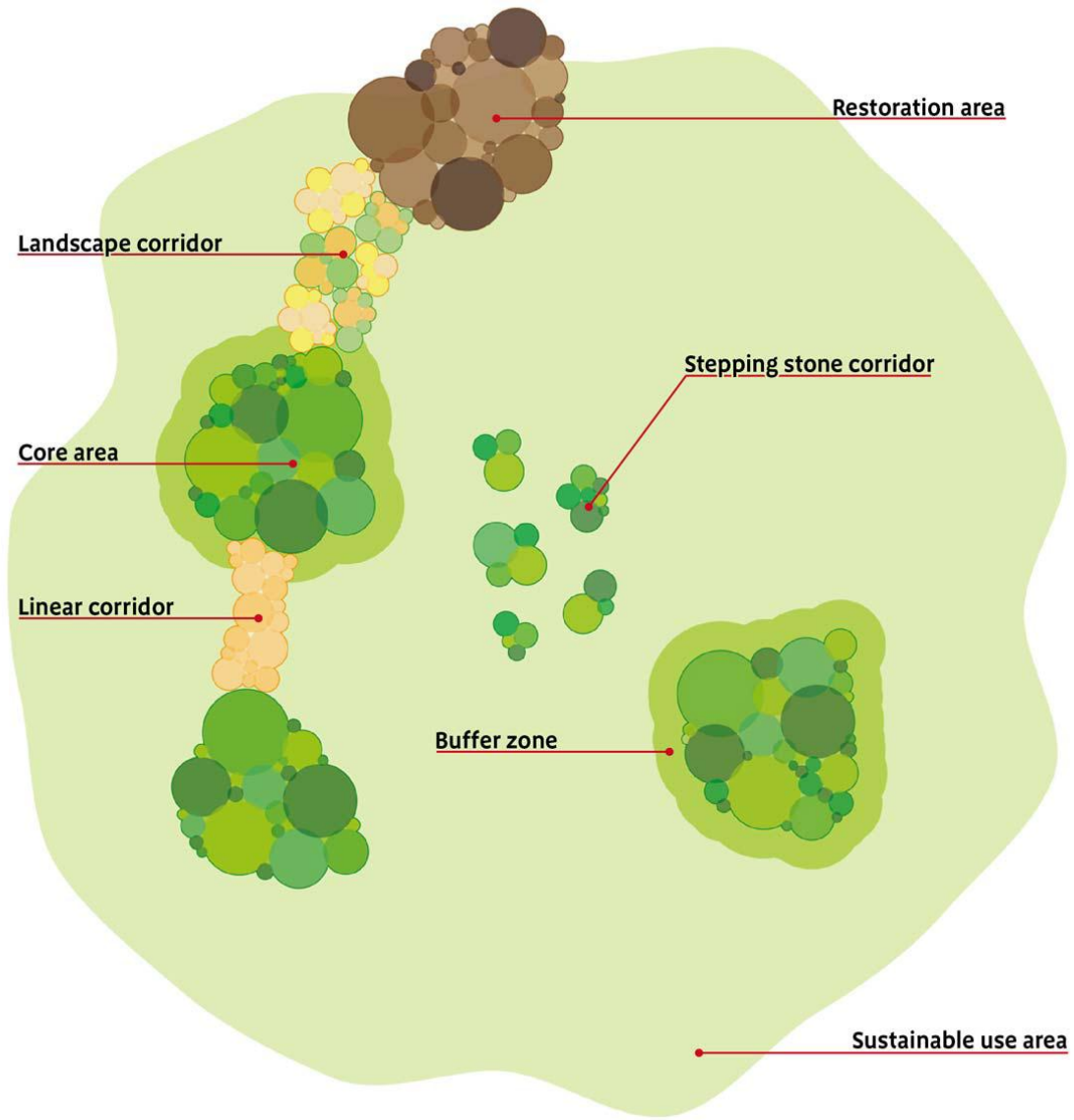
Dendrogram showing the primary divisions of a TWINSpan analysis of monads in B&BC (monads with <25% within B&BC omitted)

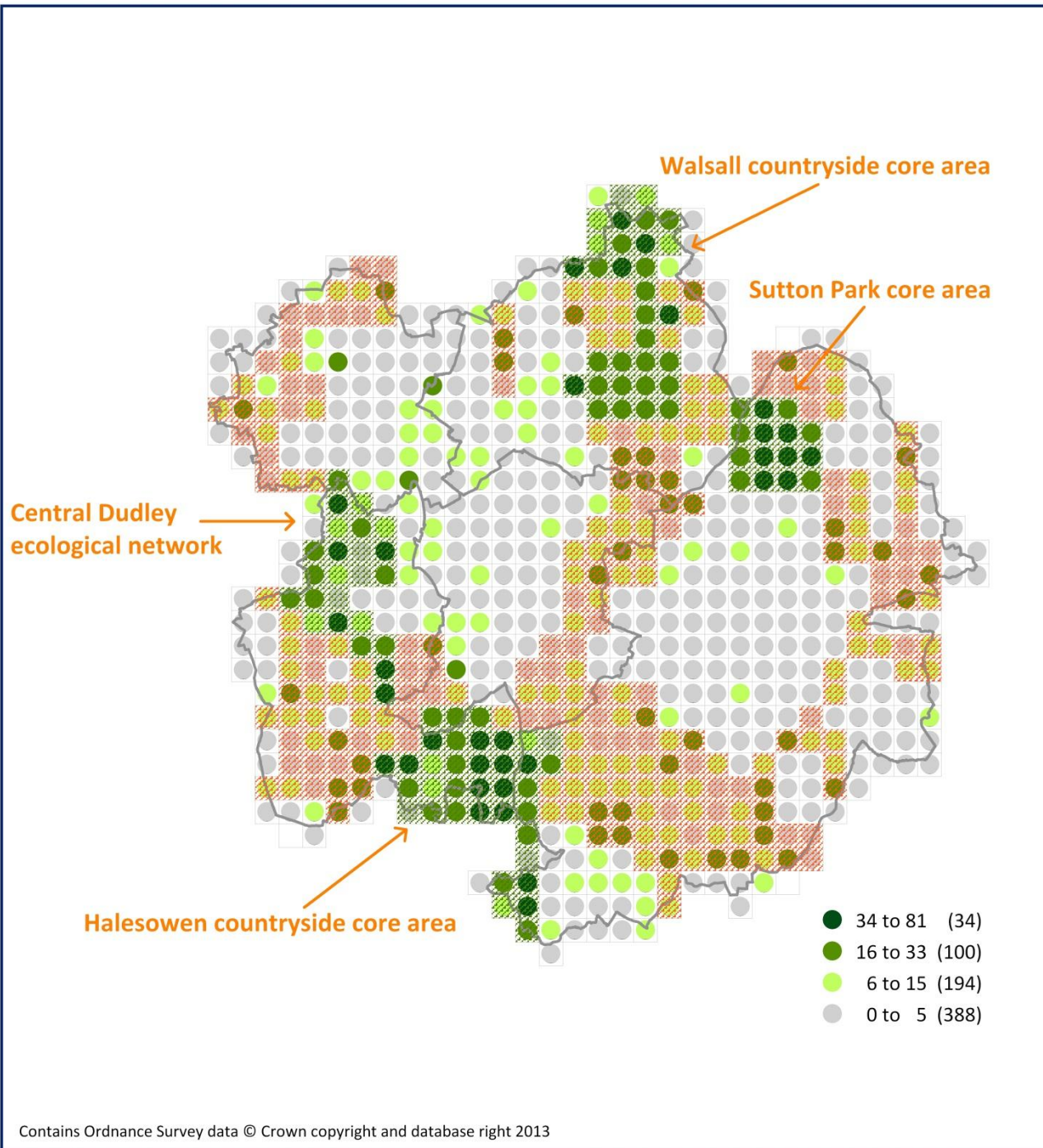
Species shown are indicators for the relevant side of a division











To achieve long-term environmental gains for the wildlife and people of Birmingham & the Black Country by delivering targeted, on-the-ground, biodiversity projects at a landscape scale.



Part of the bid for The Wildlife Trust for Birmingham and the Black Country to be given Nature Improvement Area status



EcoRecord

ATKINS



ceep
Consultancy for Environmental
Economics & Policy



Birmingham &
Black Country



Birmingham
Natural History
Society

BUSINESS
IN THE
COMMUNITY



Dudley
Metropolitan Borough Council

Wolverhampton
City Council



LCA
ecological consultants

Forestry Commission



Campaign to Protect
Rural England



THE BLACK
COUNTRY



Environment
Agency



The
Waterways
Trust



MADE



Martineau
Gardens

WOODLAND
TRUST



NATURAL
ENGLAND



Sandwell
Metropolitan Borough Council

RPS

Martineau
Gardens

sustainability
west midlands

UNIVERSITY OF
WOLVERHAMPTON

Heantun
Housing

paws
people and wildlife
services



Walsall Council

NFU

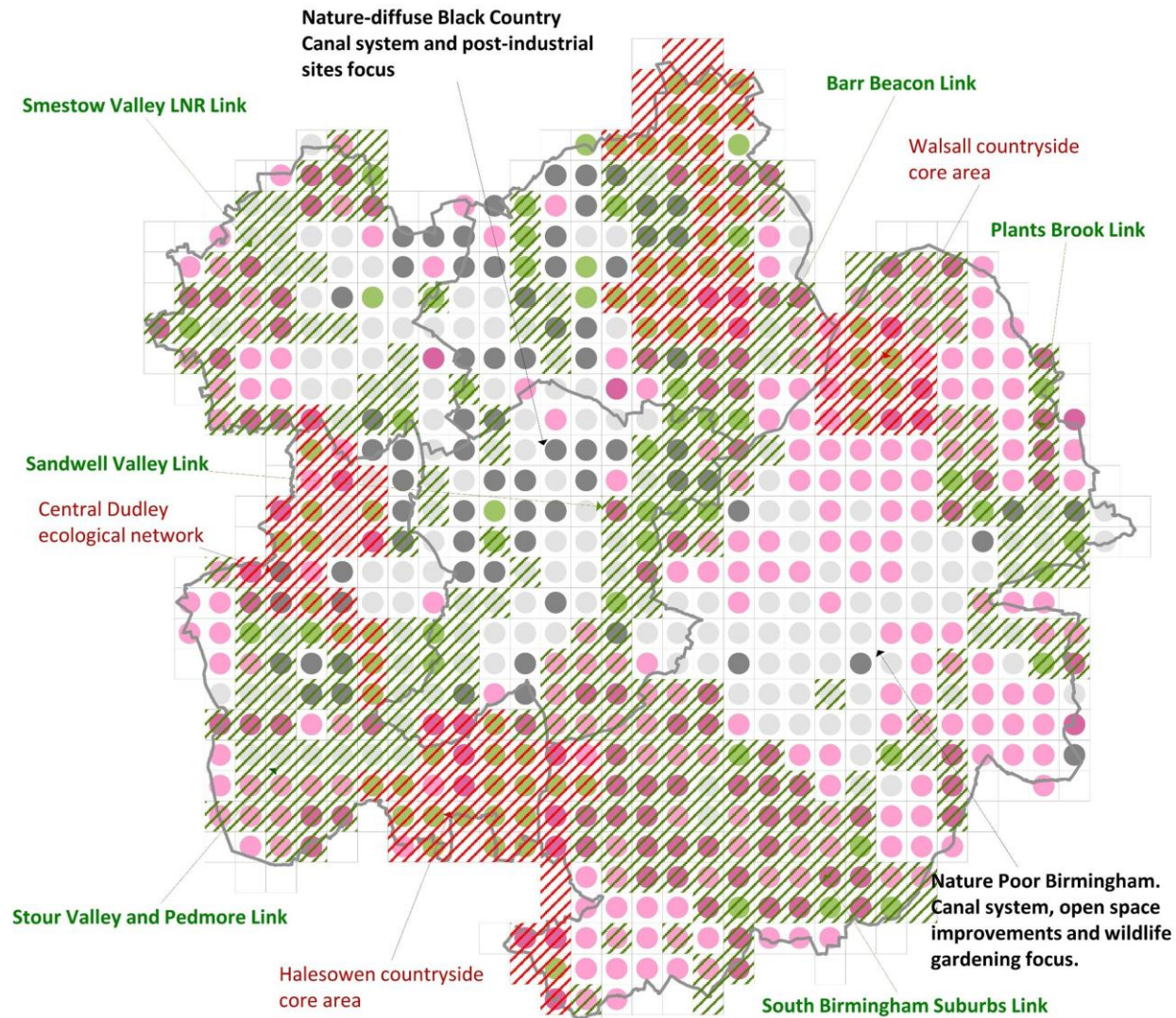
wardell
armstrong

Friends of Babb's Mill
Friends of Barnford Park
Friends of Cotteridge Park
Friends of Deer Leap Wood
Friends of Fields Millenium Green
Friends of Haden Hill Park
Friends of Kings Norton Nature Reserve
Friends of Kings Norton Park
Friends of Moseley Bog
Friends of Netherton Park
Friends of Perry Hall Park
Friends of Selly Oak Park
Friends of The Shire Country Park
Friends of Thimblemill Brook

**Birmingham
& Black
Country**

**Nature
Improvement
Area**





- Group 000 - Habitat-poor Suburbs (207)
- Group 001 - Habitat-rich Suburbs (109)
- Group 010 - Industrial/Suburban (164)
- Group 011 - Industrial/Open-water (73)
- Group 1 - Rich Semi-natural (102)















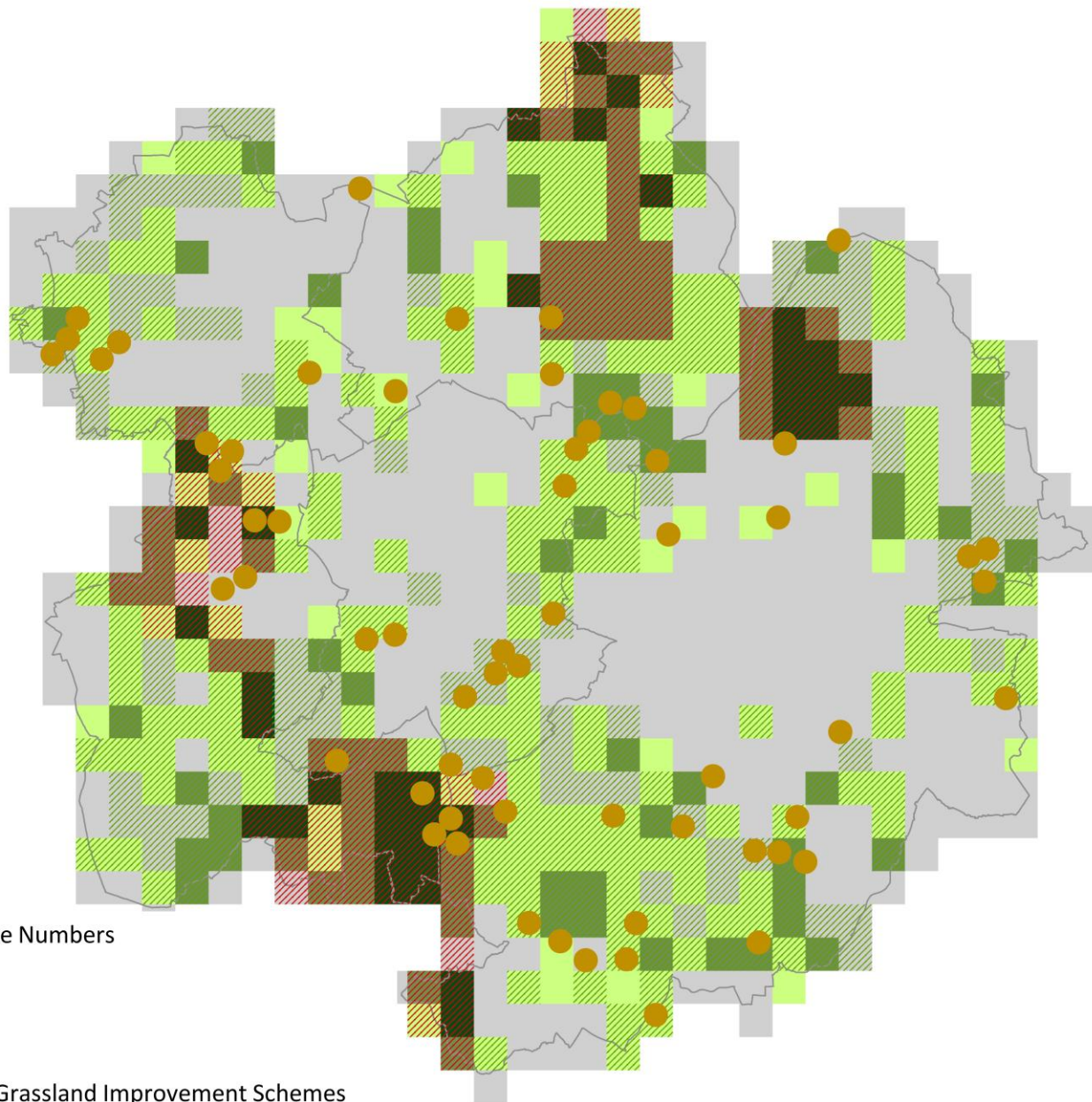












Axiophyte Numbers

High

Low

Low

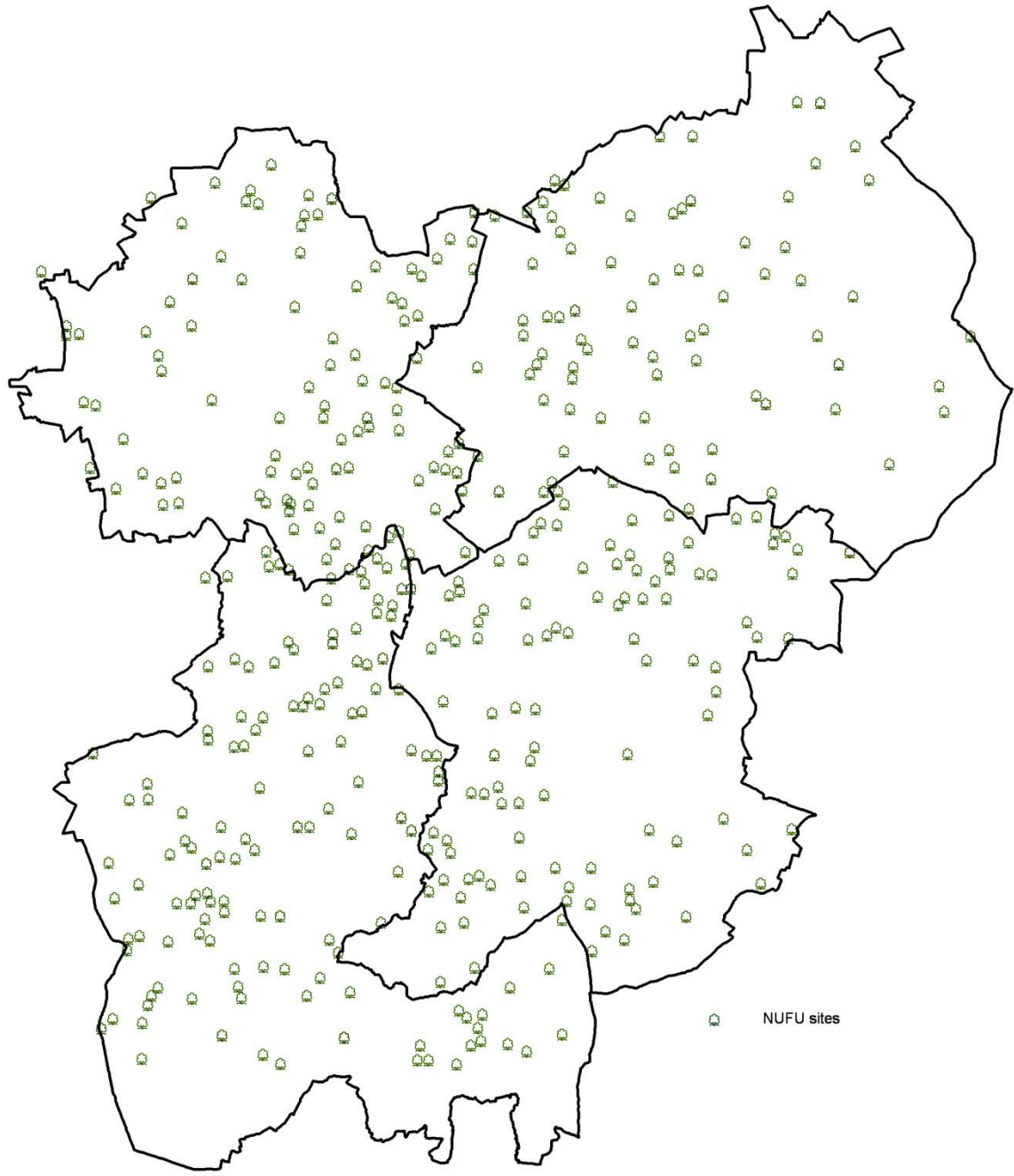
NIA Grassland Improvement Schemes

B&BC Linking Areas

B&BC Core Areas

© EcoRecord 2014

Contains Ordnance Survey data © Crown copyright and database right 2014



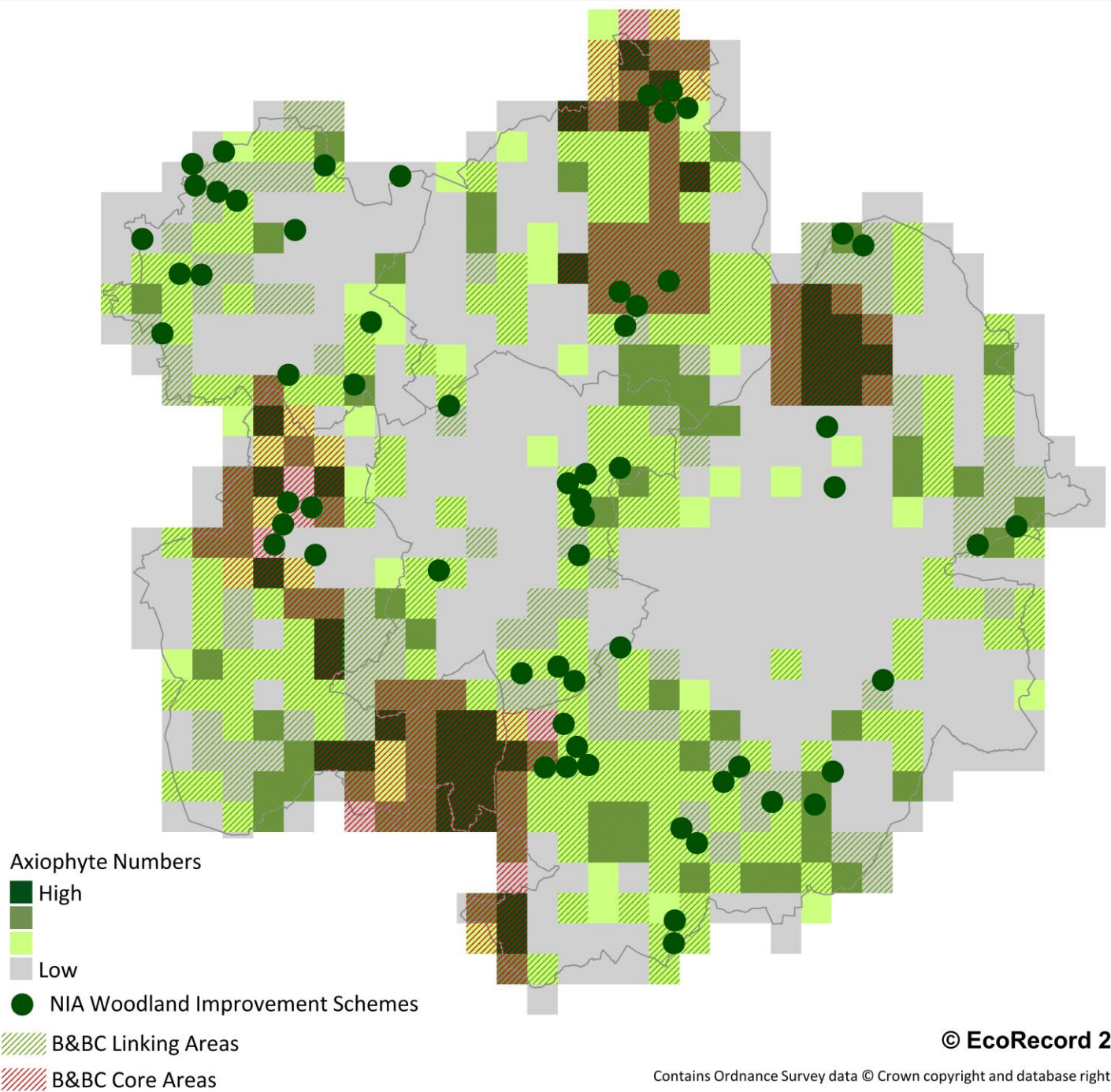








19.03.2014

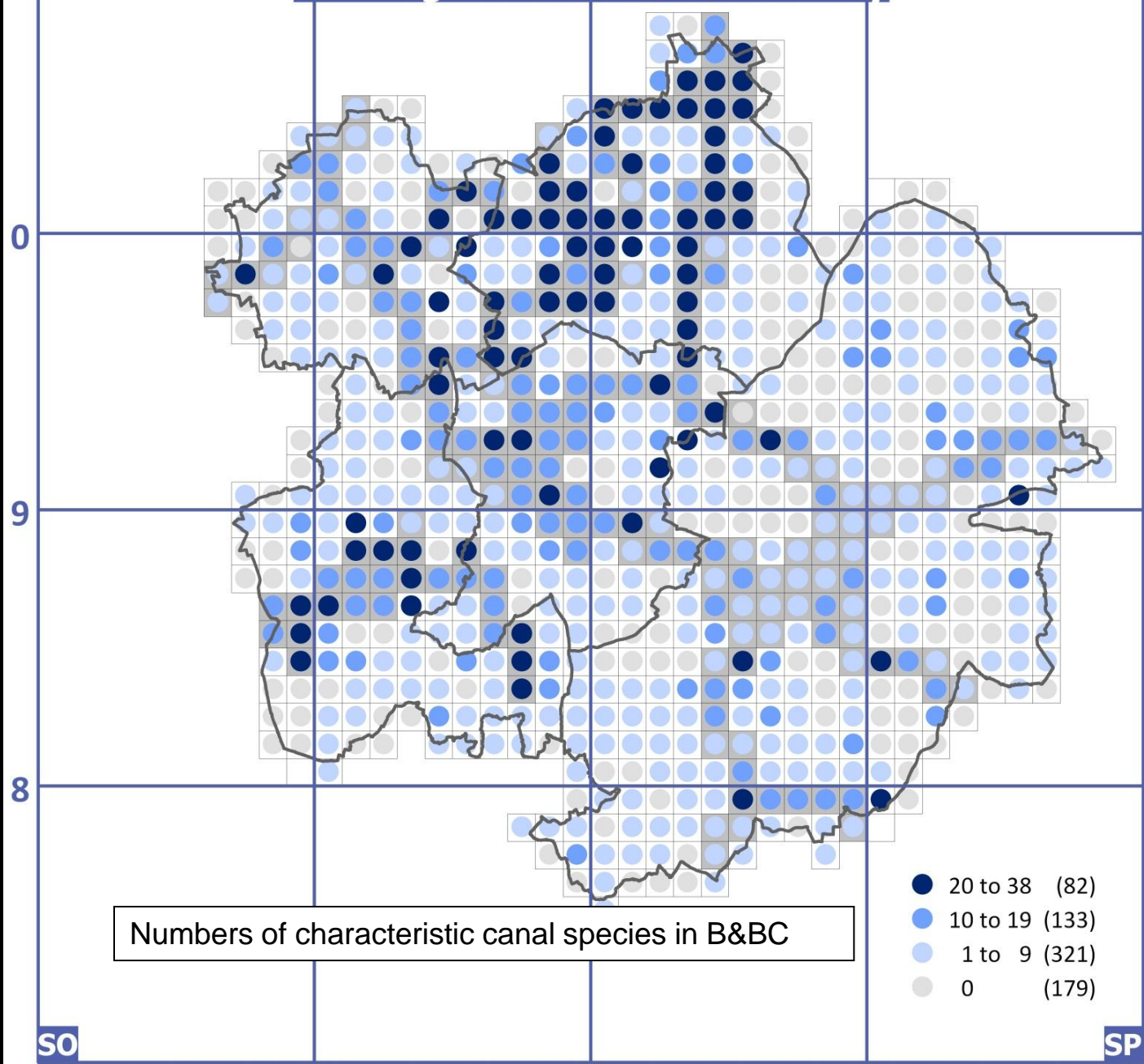




SJ

Birmingham and Black Country

SK



Numbers of characteristic canal species in B&BC

- 20 to 38 (82)
- 10 to 19 (133)
- 1 to 9 (321)
- 0 (179)

SO

SP

9

0

1

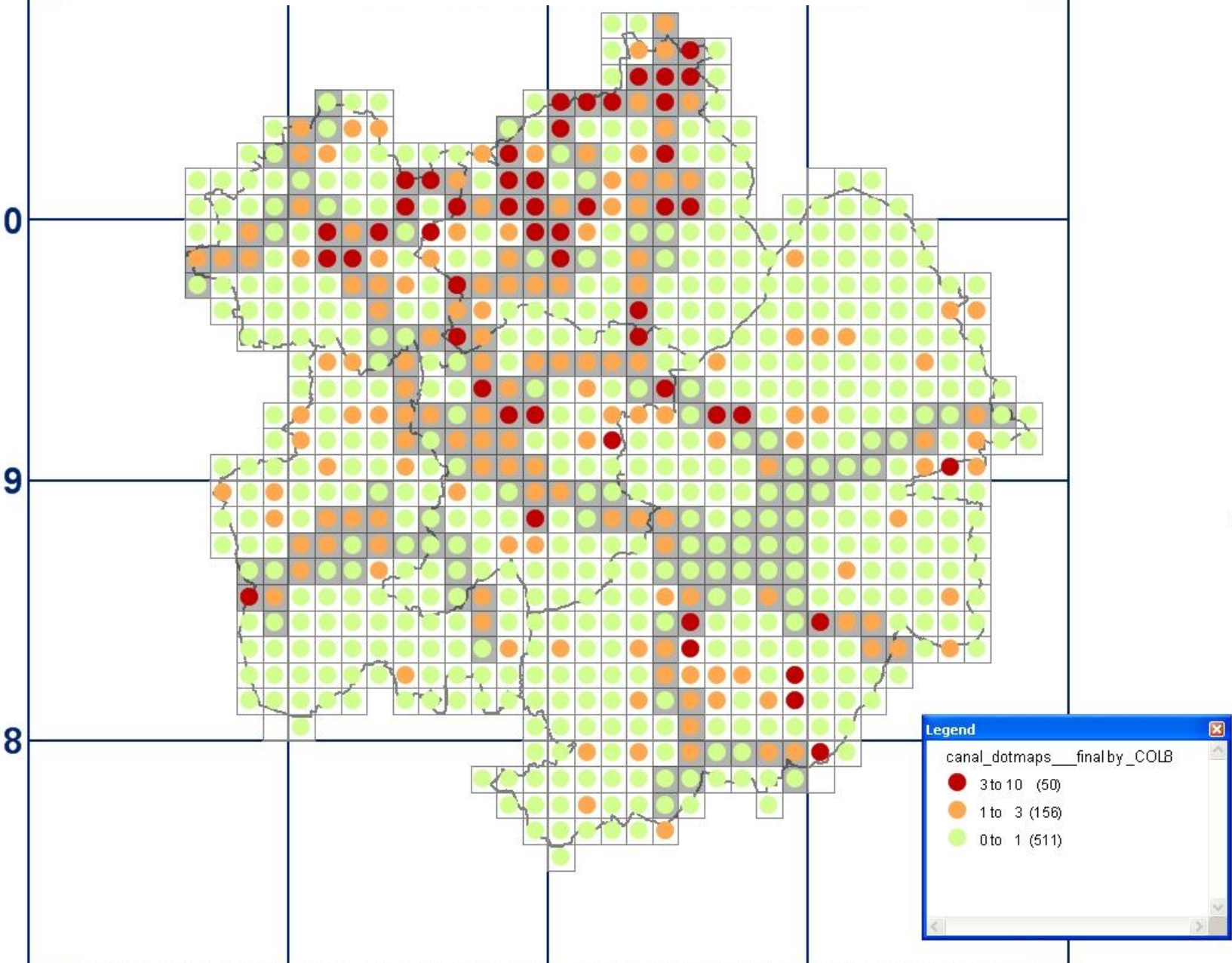
0

9

8

SJ Canal invasive aliens superimposed on canal areas

SK







SJ

Birmingham and Black Country

SK

0

9

8

Rivers, streams

SO

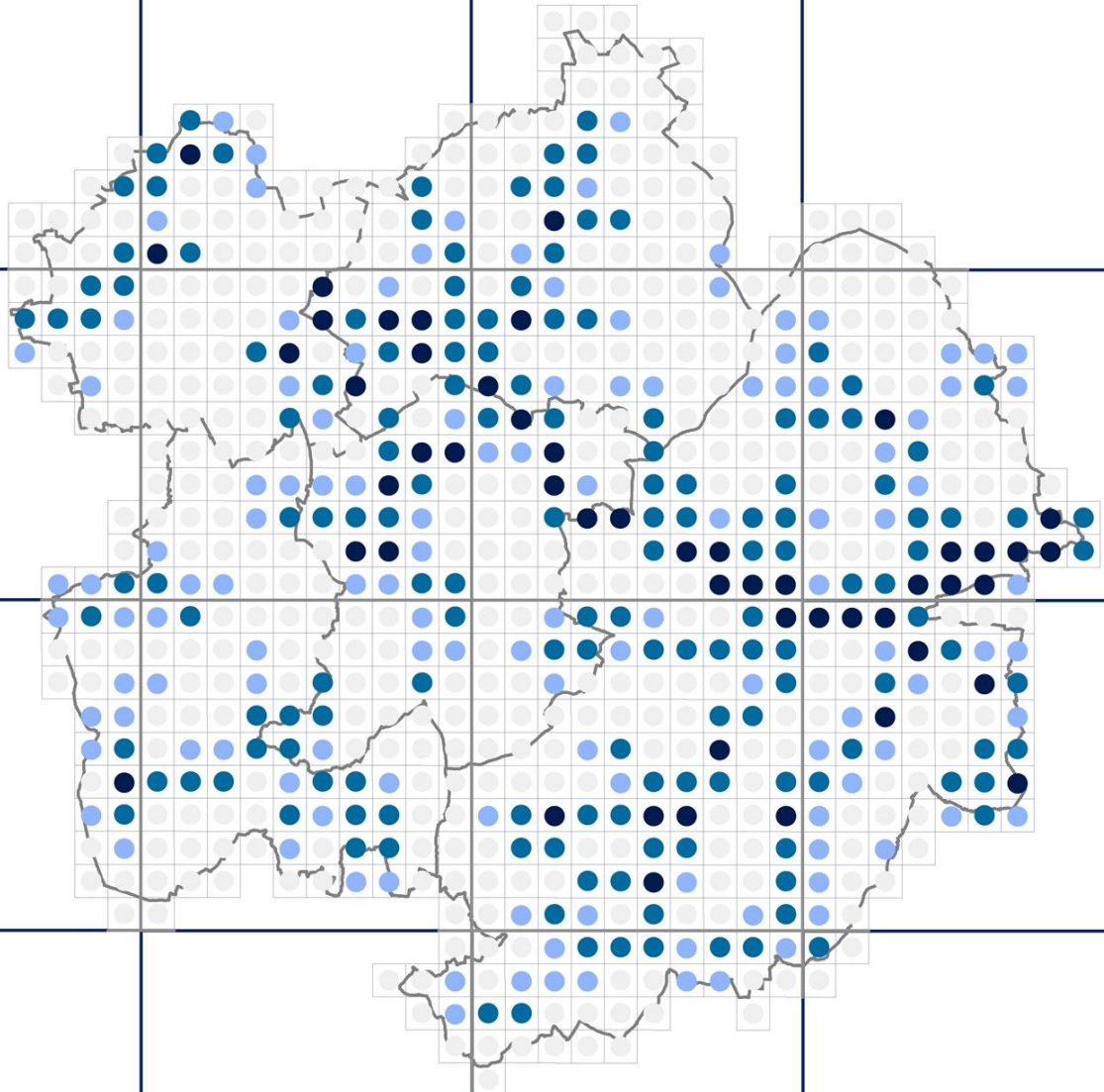
Reproduced from the Ordnance Survey mapping with permission of the Controller of Her Majesty's Stationery Office. © Crown Copyright. Unauthorised reproduction infringes Crown copyright and may lead to prosecution or civil proceedings. Licence number LA 08946L. © 2010 © EcoRecord 2010

SP

9

0

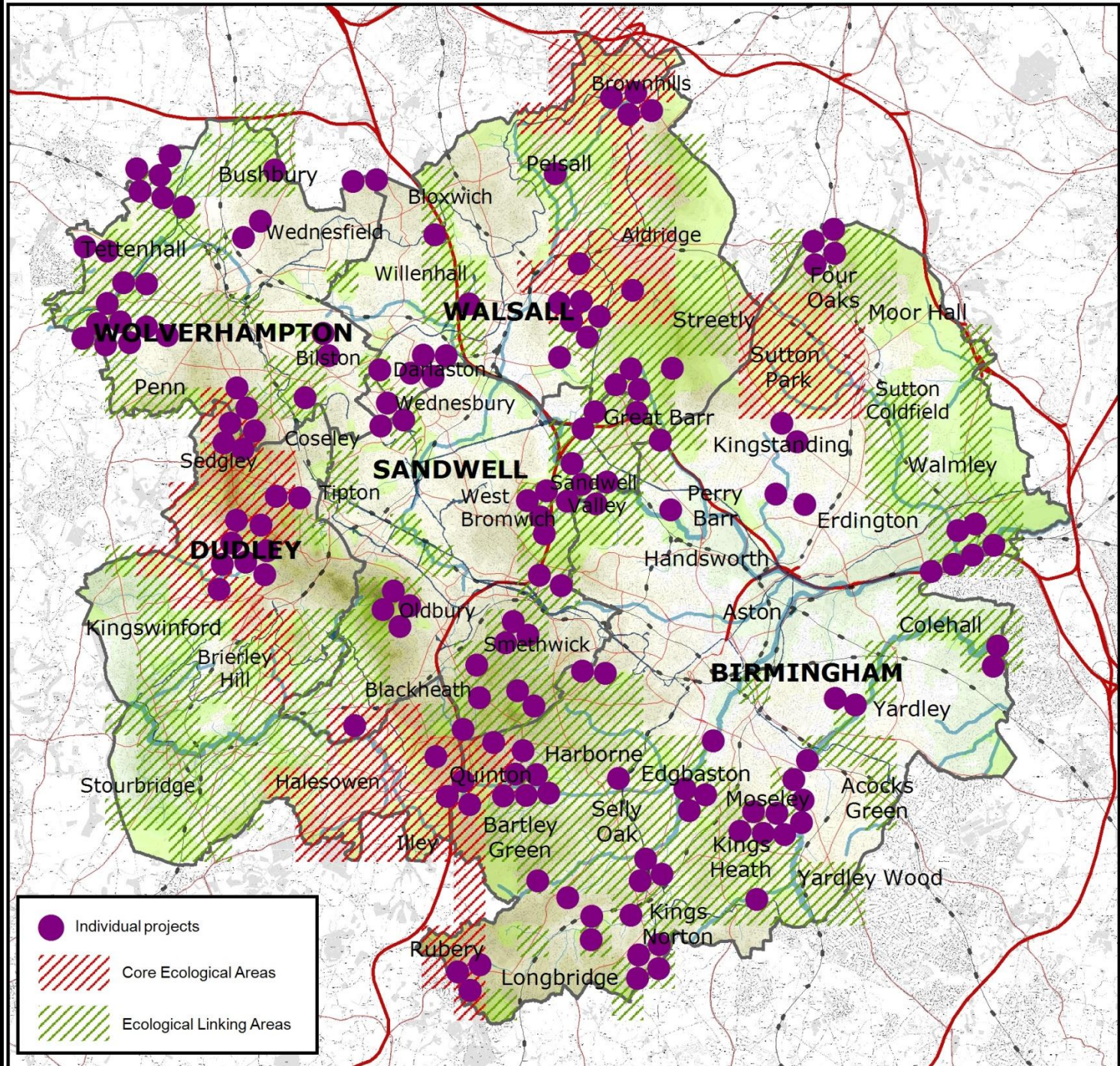
1

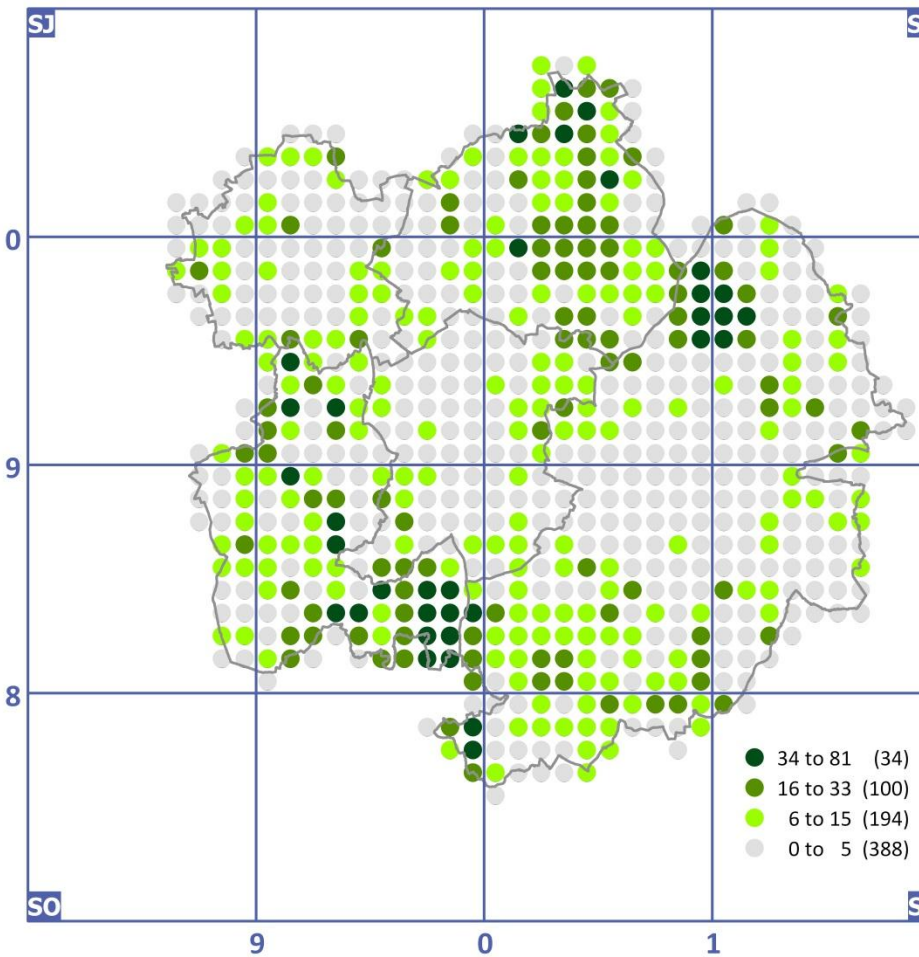




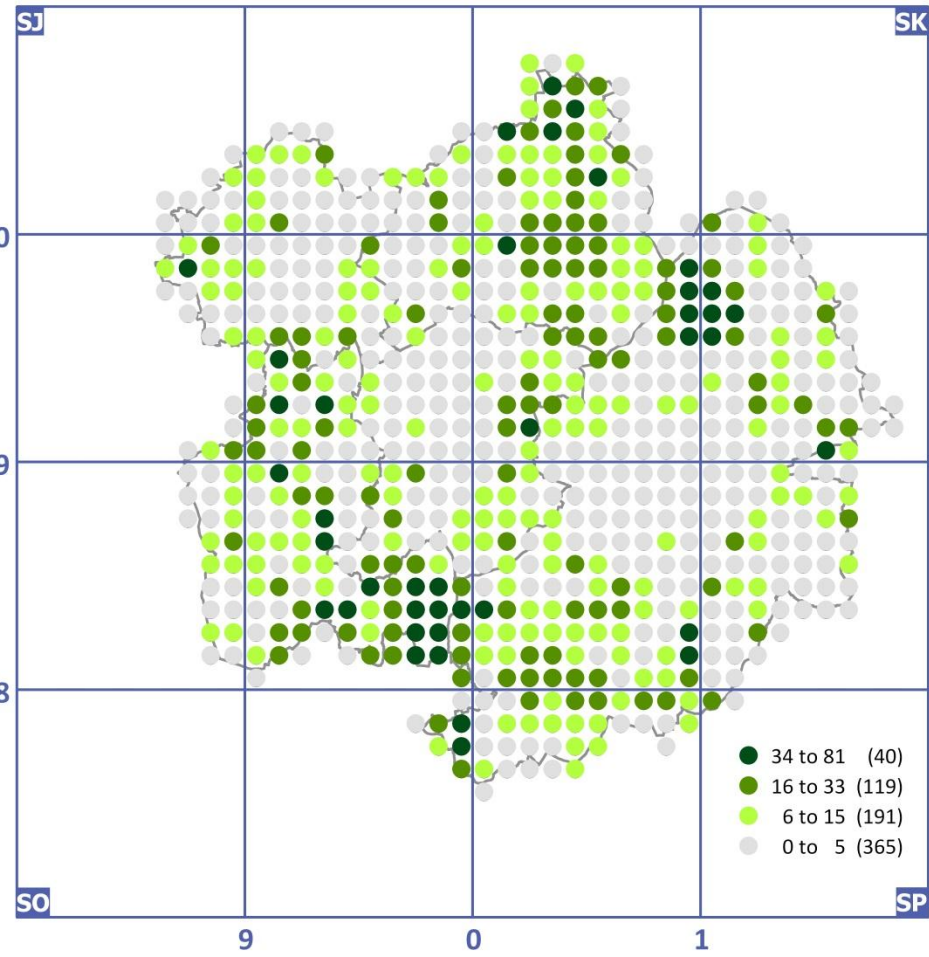
Link Pathways
Link Pathways







Pre-NIA ecological network



Best case Post-NIA ecological network



Eyes on the Ground

Looking out for our nature improvements



A guide to monitoring
the flowers of our
Magnificent Meadows



Protecting wildlife where you live



POSITIVE INDICATOR

Ragged-Robin *Silene flos-cuculi* (*Lychnis flos-cuculi* in many books)



A cheerful **perennial**, often quite short-lived, occurring in wet pastures and mires, often associated with rushes.

The hollow stems are typically 1-2 ft (30-60 cm) tall. The leaves are in pairs, pointed, toothless and narrow below into an indistinct petiole with a few coarse hairs either side (usually green, not reddish as in the picture). The flowers occur in loose clusters; they are quite large, about an inch (3 cm) across. The five petals are each bizarrely cleft into four unequal lobes.

It is similar to but easily distinguished from Red Campion by the 'ragged' flowers and the wetter habitat.



NEGATIVE INDICATOR

Broad-leaved Dock *Rumex obtusifolius*



Beloved of children for its alleged ability to salve Nettle stings, these loose rosettes of large, broad, bluntly-pointed leaves, up to a foot (30 cm) long are conveniently found where nettles also grow, i.e. in disturbed, fertile soil. The leaves are heart-shaped at the base and the base of the leaf stalk has a transparent sheath.

Docks are NOT beloved of gardeners since they are tenacious perennial weeds with deep, woody tap roots. It is also a nationally *injurious weed of agriculture*.

From June onwards the rosettes throw up flowering stems up to three feet (90 cm) tall, bearing thousands of small, greenish, wind-pollinated flowers. These should be removed, since they mature to vast numbers of dark chestnut-brown fruits about 1/4 inch (6 mm) long.

There are other docks: The Crisped Dock *Rumex crispus* has narrower leaves with undulating margins and larger fruits and is just as bad a weed. Wood Dock *Rumex sanguineus* and Clustered Dock *Rumex conglomeratus* are less aggressive members of woodland and wetland communities. They have smaller leaves and much smaller fruits. You can identify any dock from the character of the sepals which cover their fruits.



Wood Dock *R. sanguineus*



Broad-leaved Dock fruiting sepals x 4



Clustered Dock *R. conglomeratus* fruiting sepals x 6

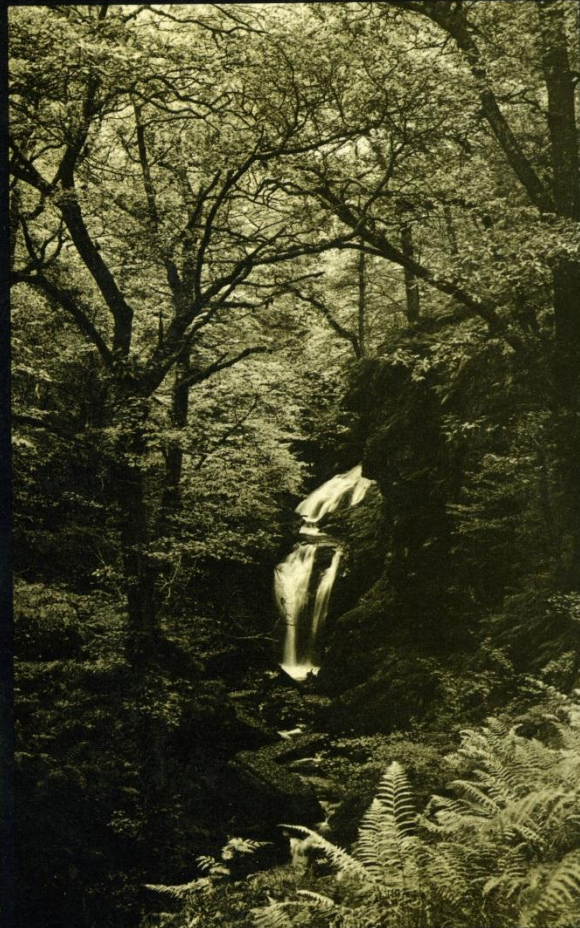






A NATURE CONSERVATION REVIEW

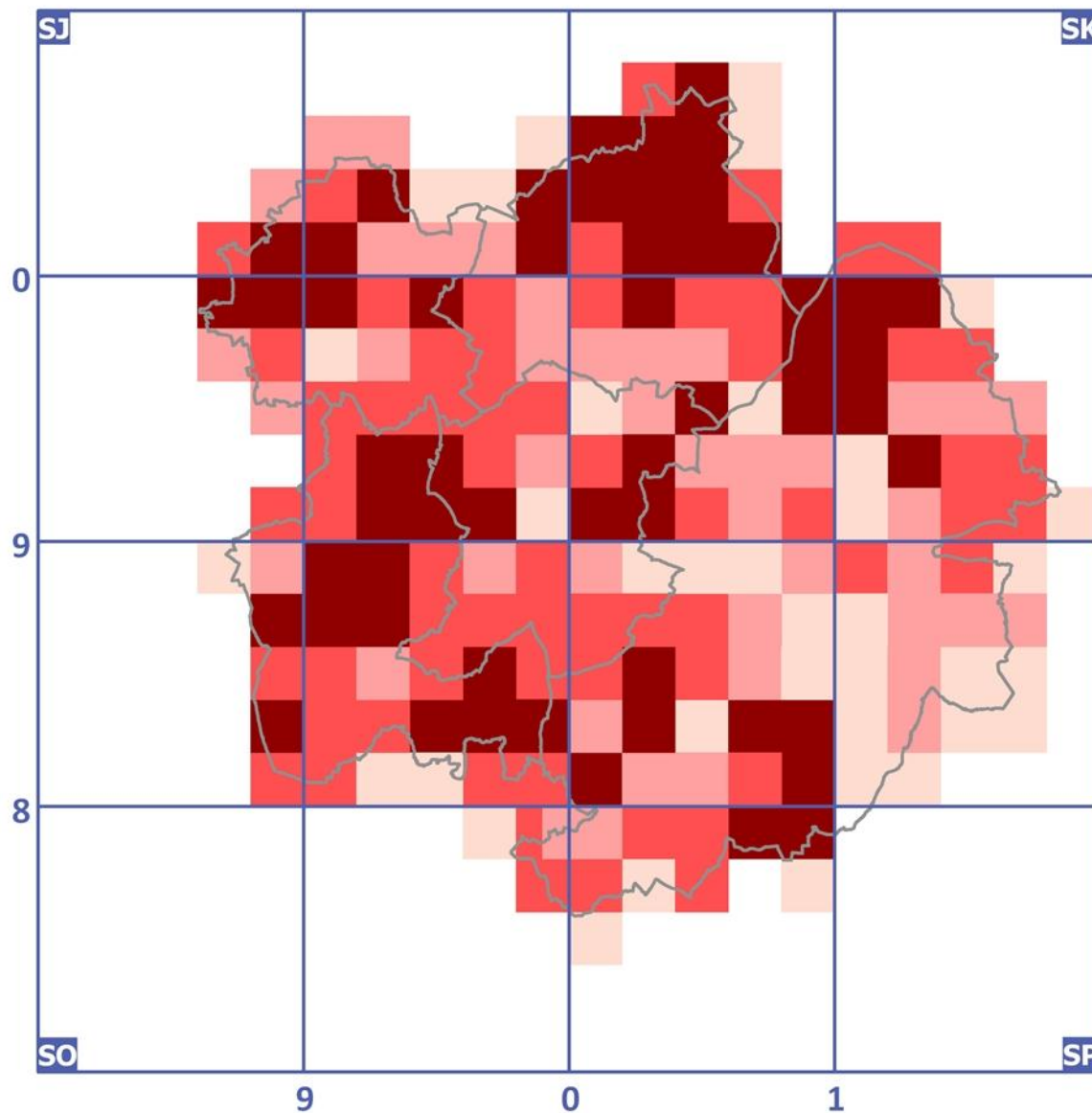
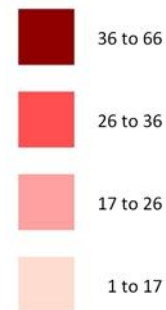
VOL 1 EDITED BY D.A. RATCLIFFE





Key:

Number of Breeding Bird Species per Tetrad



Drawing title:

**NUMBER OF BREEDING
BIRDS PER TETRAD**

Scale:
1:250,000 @ A4

Date:
21/08/2013

EcoRecord
the ecological database
for Birmingham and the Black Country

©EcoRecord

www.ecorecord.org.uk

