

SOUTH DOWNS WAY AHEAD NIA

A BETTER CONNECTED AND INSPIRATIONAL CHALK ECOSYSTEM, SUSTAINABLY MANAGED TO ENHANCE BIODIVERSITY AND PEOPLE'S WELL-BEING FOR NOW AND THE FUTURE

Example Focal Area map: Midhurst and Harting



OUR OBJECTIVES

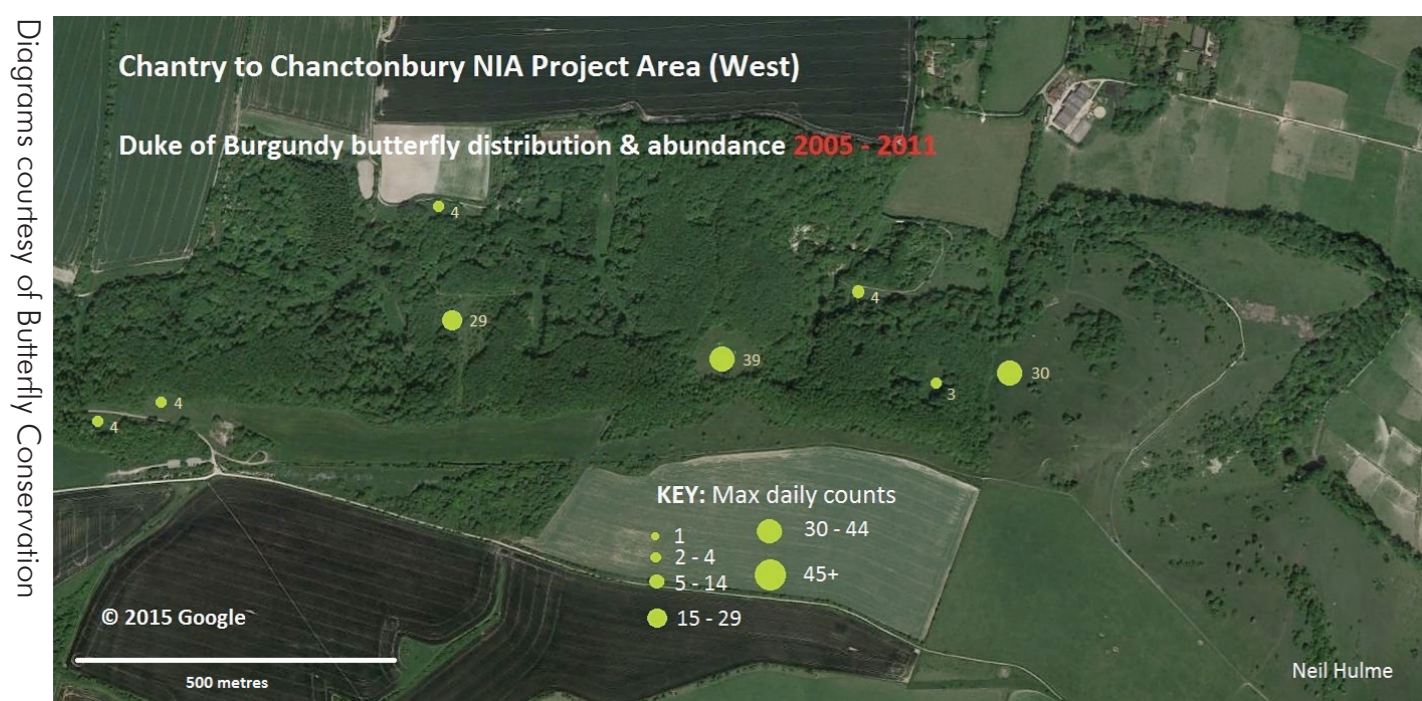
- Walk the Chalk
- Linking the Fragments
- Surface to Groundwater
- Town to Down
- Valuing the Chalk

CONNECTING WILDLIFE

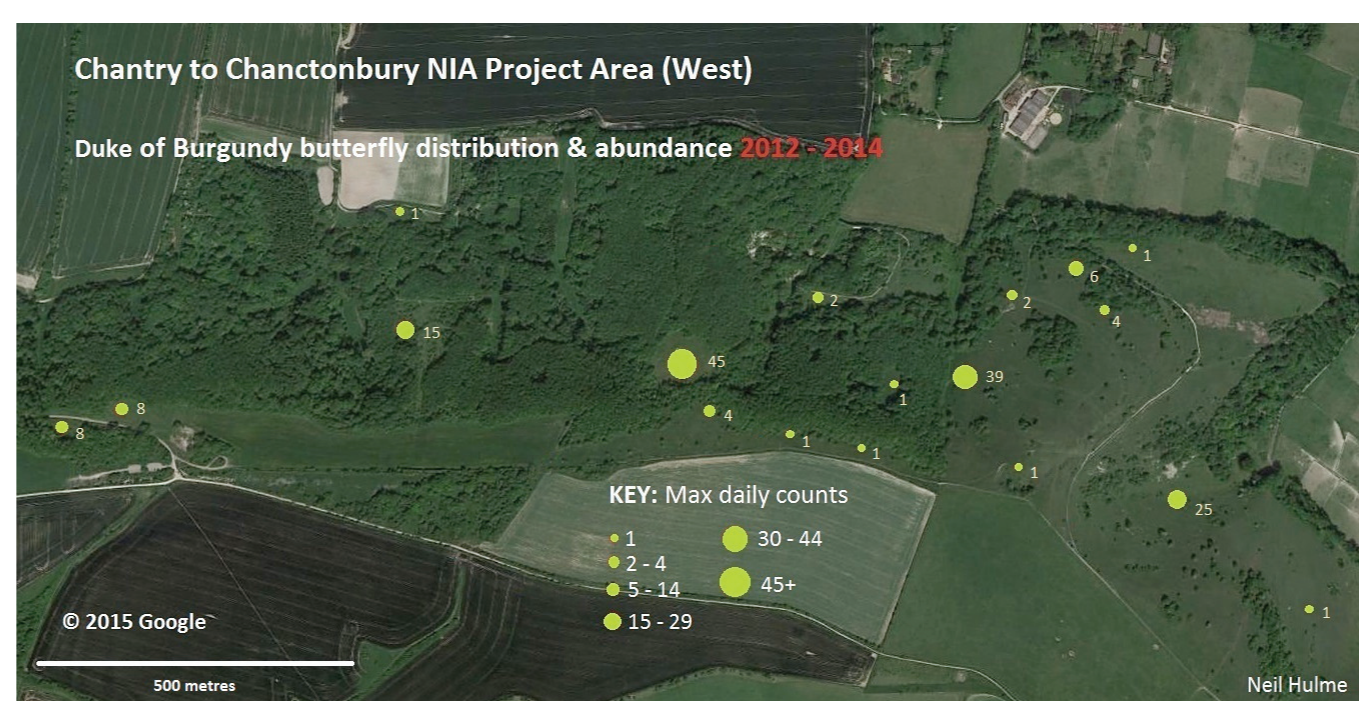
- Restoring and expanding chalk grassland sites
- Creating wildlife corridors and stepping stones
- Working with land managers to reinstate grazing and promote wildlife-friendly land management
- Delivering targeted land management for key species such as Duke of Burgundy butterfly

CONNECTING PEOPLE

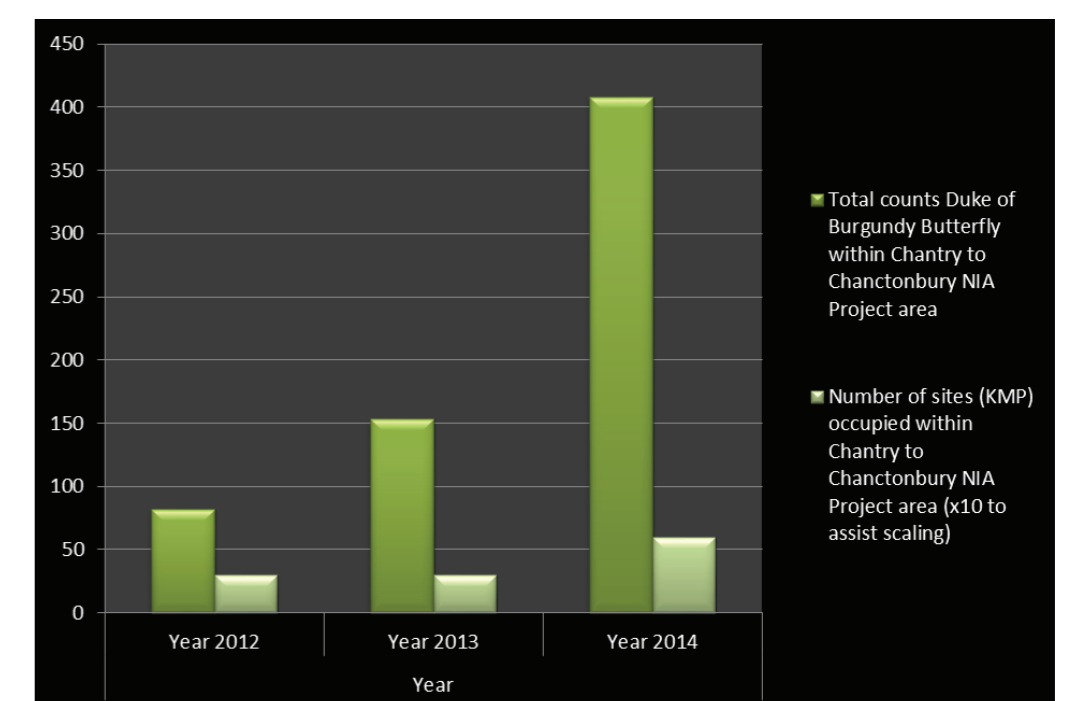
- Connecting people with their local chalk grassland sites
- Connecting people with their local communities
- Involving local people with conservation volunteering, e.g. livestock looking and chalk grassland seed collection
- Promoting access along the South Downs Way National Trail and other rights of way



Duke of Burgundy distribution and abundance before NIA project (2005 -2011)



Current Duke of Burgundy distribution and abundance (2012-2014)



For the South Downs Way Ahead NIA we are measuring habitat connectivity by assessing the relationship between chalk grassland patch size and distance between patches. If average patch size increases, and average distance between patches decreases, then we will have demonstrated that our NIA project has improved habitat connectivity



SOUTH DOWNS NATIONAL PARK

