



Access Norfolk

Improving countryside access together





Improving countryside access together

Overview

- Introducing Access Norfolk (Mission Statement and Values)
- Access Norfolk: Why it came about
- Adding value and creating opportunities
- Early priorities
- First steps
- Charitable status and legal constitution
- Contacts
- Useful links and guidance



Paston Way
 Overstrand Circular Walk 8 1/2 miles

Overstrand Circular Walk 8 1/2 miles
 St Martin's Church 1/2 mile
 Public Toilets 130 yards

Norfolk Coast Path
 & Paston Way
 Cromer Pier 2 miles

Introducing Access Norfolk

Mission Statement

To improve opportunities for outdoor recreation, appreciation and enjoyment of the countryside for the public benefit of people visiting and living in Norfolk.

Values

To provide safe, sustainable and accessible ways to visit the countryside in Norfolk.



Improving countryside access together

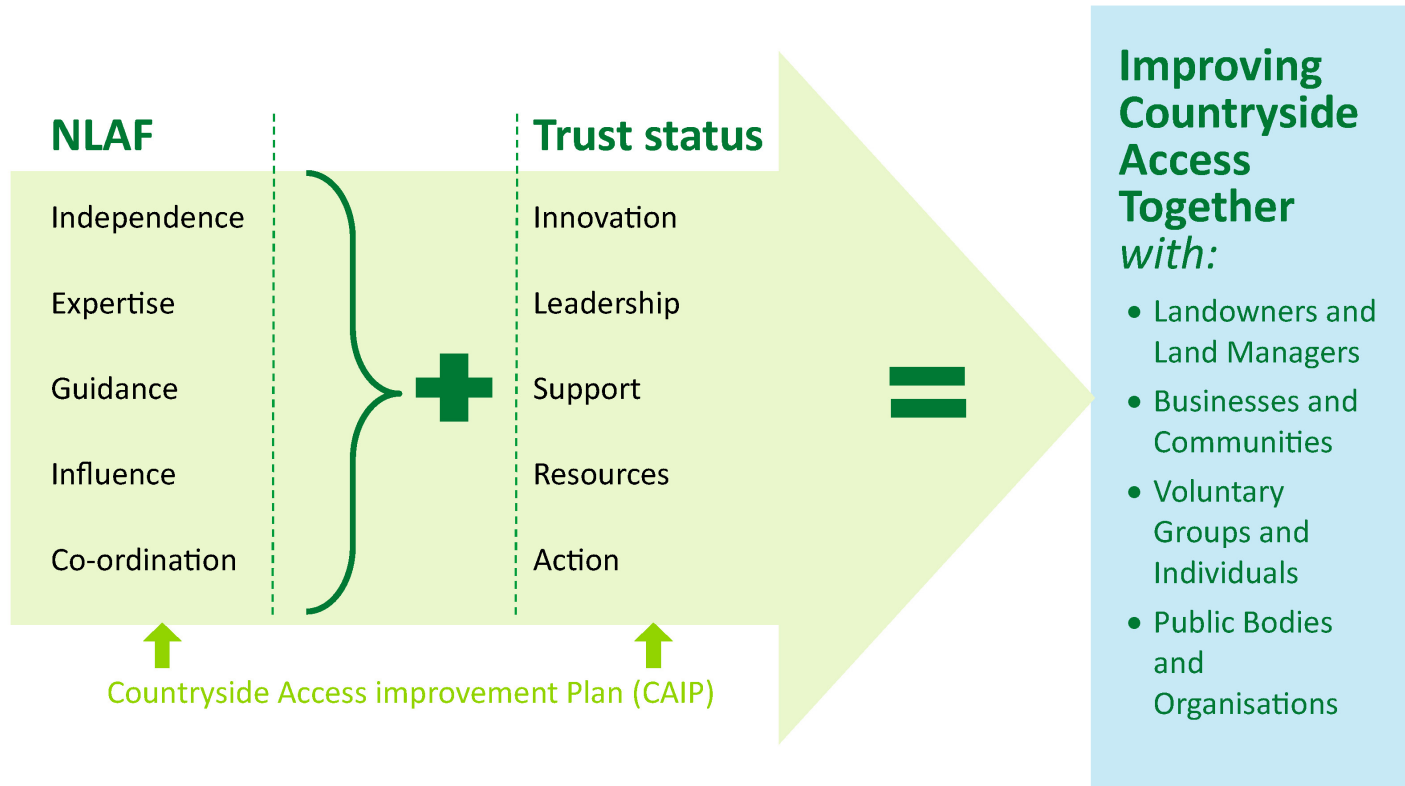
Access Norfolk: Why it came about

- Grown out of an assessment of needs from the 'Route In Time' seminar run by the Norfolk Local Access Forum (NLAF) in 2011.
- Need identified following Strategic Review of Norfolk Rights of Way Improvement Plan (a Vision for Improving Norfolk's Countryside Access Network developed by Norfolk County Council in partnership with the NLAF, landowners, community representatives and other stakeholders in 2014/2015).
- Many opportunities to develop the access network; particularly for those not currently using it, as well as engaging local communities in the management of their local routes – Access Norfolk has a remit to take this work forward to bring benefits to communities and to the environment.
- Access Norfolk bridges the gap between the NLAF's aims for improvement to access, the capacity communities have and the limitations of the public sector to make improvements on the ground.



Improving countryside access together

Adding value and creating opportunities





Improving countryside access together

Early priorities

Access Norfolk will initially do these things:

1. To provide access to the Norfolk countryside for more people, particularly those who by reason of their youth, age, ill-health, disability, financial hardship or other disadvantage may not currently benefit.
2. To engage local communities and voluntary groups in the management of countryside access networks for the advancement of community development.
3. To monitor the strategic development of countryside access in Norfolk, identifying gaps and opportunities not being met by the local authority, landowners and other stakeholders.
4. To source additional resources to support these activities which may not be available to the local authority



Improving countryside access together

First Steps



Access Norfolk
Improving countryside access together

It is important for people to get to know Access Norfolk and understand what it is trying to achieve.

Developing an identity and raising the profile of Access Norfolk will:

- a) Make it easily identifiable across the county and wider.
- b) Help people understand exactly what Access Norfolk is and what it does.
- c) Illustrate a very clear relationship between Access Norfolk and the NLA.
- d) Help identify it as a clear brand for project sponsorship/support.

N.B. Access Norfolk is in the early stages of brand development.



Improving countryside access together

Charitable status and legal constitution

- Access Norfolk is a Charitable Incorporated Organisation (CIO)
- A charitable incorporated organisation (CIO) is a new form of legal entity designed for non-profit organisations in the United Kingdom.
- The main intended benefits of the new entity are that it has legal personality, the ability to conduct business in its own name, and limited liability so that its members and trustees will not have to contribute in the event of financial loss.
- Access Norfolk uses a 'Foundation Model' for its constitution which means its only voting members are its Charity Trustees.
- Access Norfolk has 7 Trustees:
 - 5 drawn from the NLA
 - 2 specialist (one is a senior NCC officer and one is an external expert from the University of East Anglia)



Improving countryside access together

Contacts

Trustees:

Martin Sullivan (NLAF Chair)

Seamus Elliott (NLAF)

Ray Walpole (NLAF)

Ann Melhuish (NLAF)

George Saunders (NLAF)

John Jones (Norfolk County Council – Countryside and Coastal Manager)

Jenni Turner (University of East Anglia – Professor of Environmental Sciences)

Contacts:

NLAF: nlaf@norfolk.gov.uk

John Jones: john.jones@norfolk.gov.uk

Martin Sullivan: martinsullivan4x4@yahoo.co.uk

Seamus Elliott: seamus.e@hotmail.co.uk



Useful links and guidance

Websites:

www.gov.uk/government/organisations/charity-commission

www.gov.uk/guidance/charity-types-how-to-choose-a-structure

www.norfolk.gov.uk/nlaf

Guidelines:

The Charitable Incorporated Organisations (General) Regulations 2012
(‘General Regulations’)

The Charitable Incorporated Organisations (Insolvency and Dissolution)
Regulations 2012 (‘Dissolution Regulations’).



Improving countryside access together

Thank you!

Questions and discussion

