

- Goole Port Boundary
- Grimsby Port Boundary
- Hull Port Boundary
- Immingham Port Boundary
- SSSI
- Special Protection Areas
- Special Areas of Conservation
- Ramsar

© Crown Copyright and database right 2012.
 All rights reserved.
 Ordnance Survey Licence No. 10004081
 VLI.Z (2011) Maritime Boundaries Geodatabase, version 5.
 © British Crown, NERC and SeaZone Solutions Limited, 2005. [SZ 042010.001] All Rights Reserved
 © Crown copyright. All rights reserved.
 English Nature, 100017264, Scottish Natural Heritage, 100017308, Countryside Council for Wales, 100018813, Northern Ireland Environment Agency, Joint Nature Conservation Committee Support Co, 100017355 (2011)
 © Crown copyright. ABPmer 2012.

Date	By	Size	Version
Jan 12	MCE	A3	1
Projection		OSGB 1936	
Scale		1:245,000	
QA		HMW	
4061 - Environmental_Design.mxd			
Produced by ABPmer Ltd			

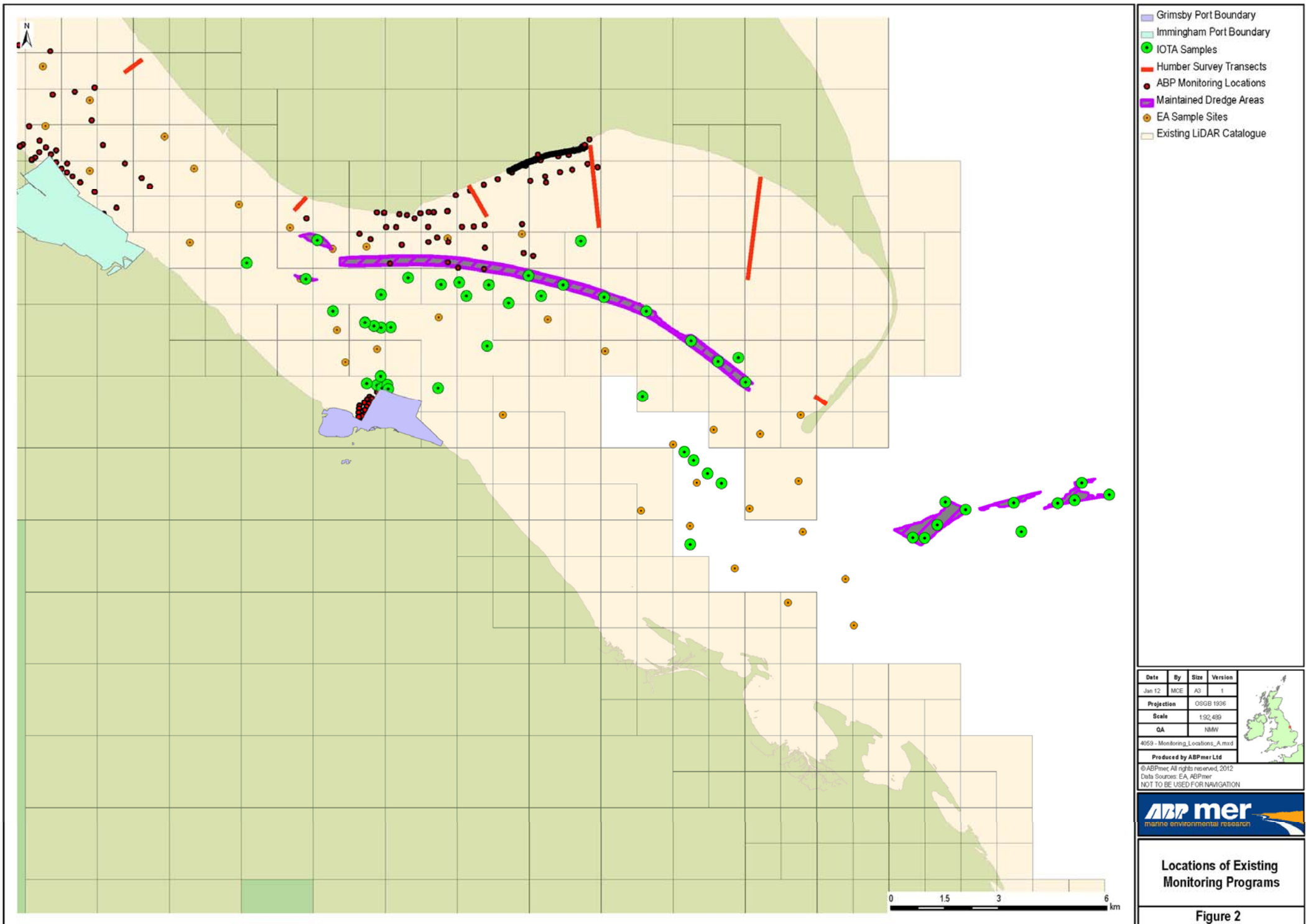


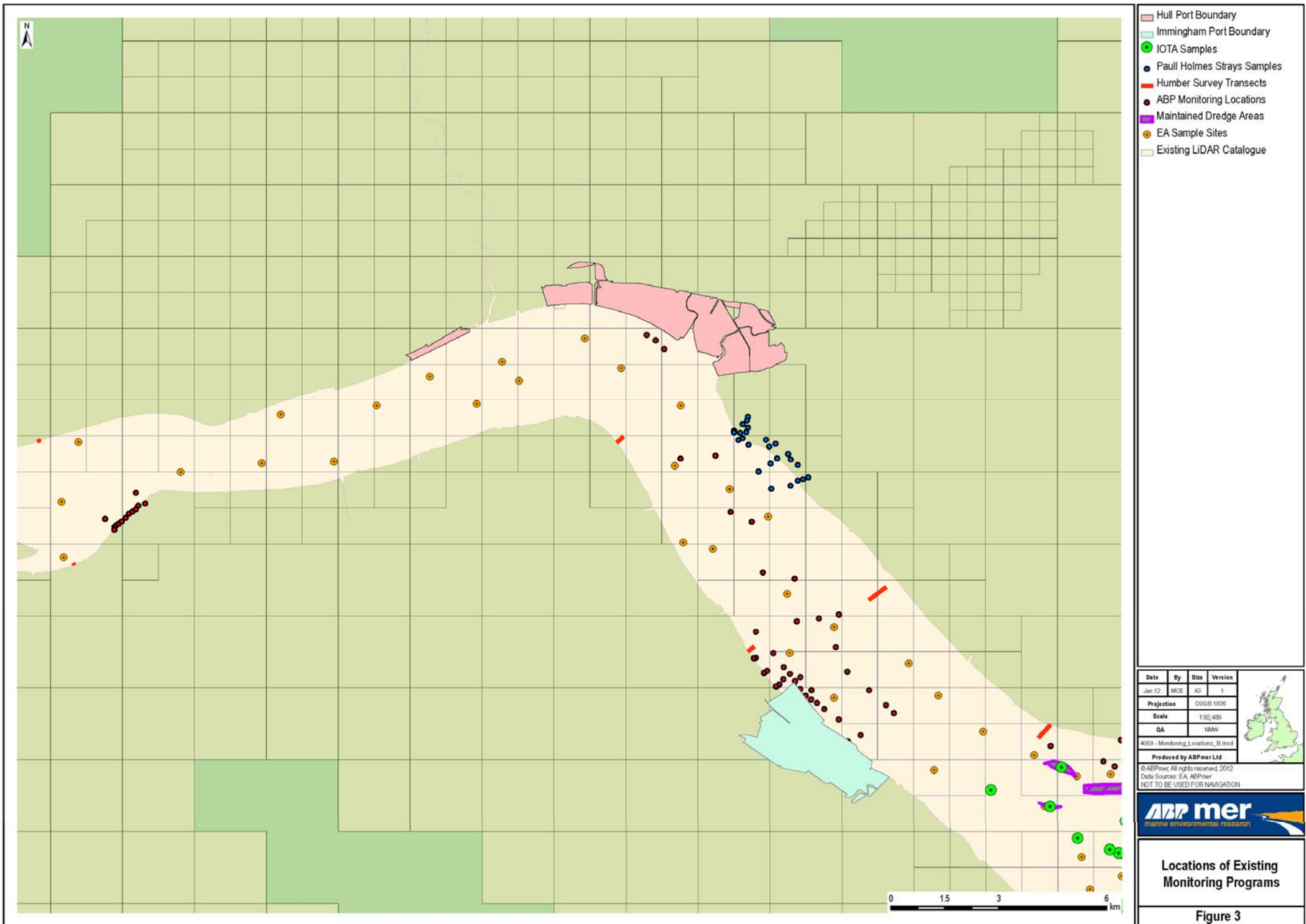
© ABPmer. All rights reserved, 2012
 Data Sources: JNCC, SNH, EN, COW
 NOT TO BE USED FOR NAVIGATION

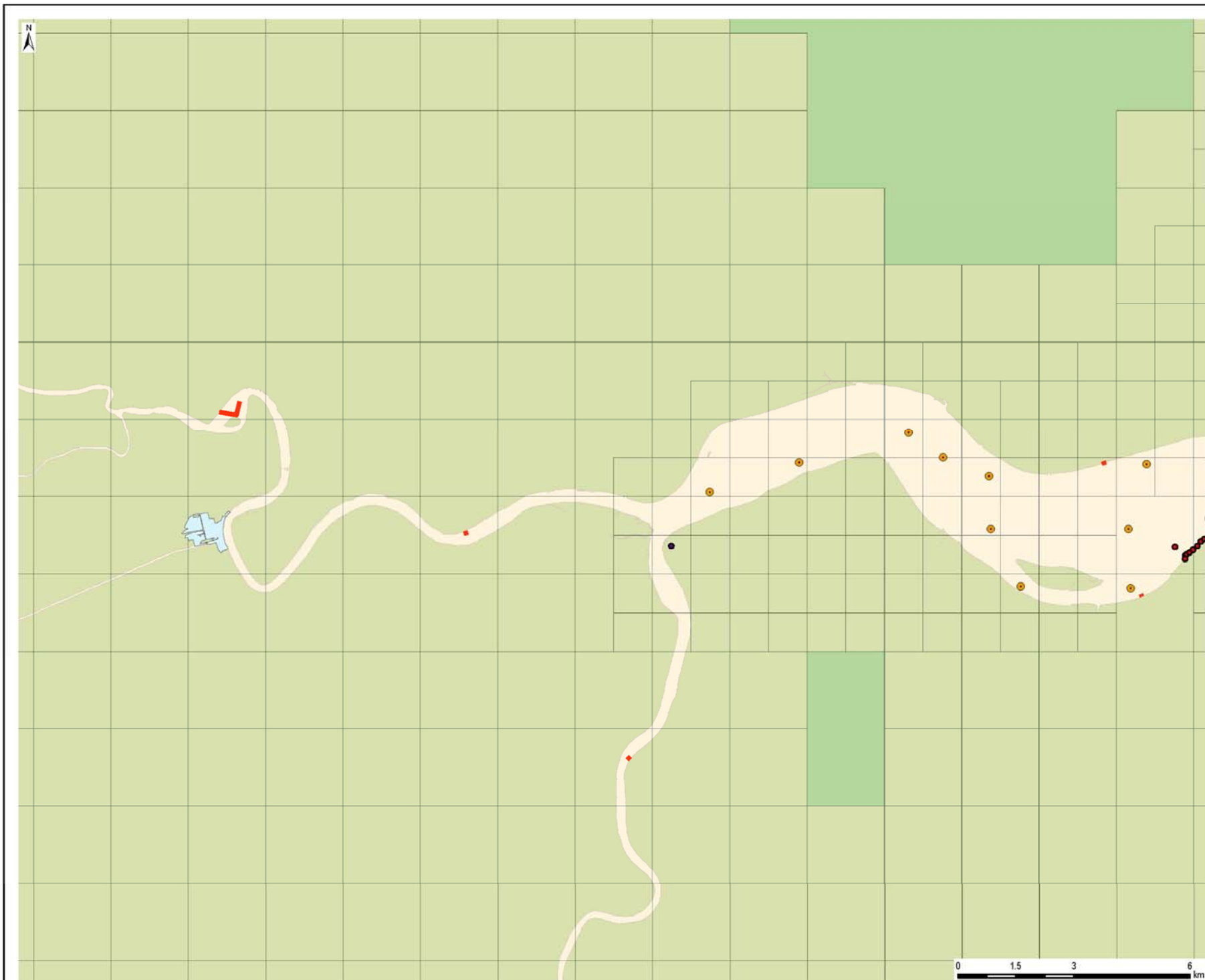


**Environmental Designations
 Within the Humber Estuary**

Figure 1







- Goole Port Boundary
- Alkborough
- Humber Survey Transects
- ABP Monitoring Locations
- EA Sample Sites
- Existing LIDAR Catalogue

Date	By	Size	Version
Jan 12	MCE	A3	1
Projection		OSGB 1936	
Scale		1:52,489	
QA		HMW	

4059 - Monitoring_Locations_C.mxd

Produced by ABPmer Ltd

© ABPmer. All rights reserved, 2012
 Data Sources: EA, ABPmer
 NOT TO BE USED FOR NAVIGATION



Locations of Existing Monitoring Programs

Figure 4

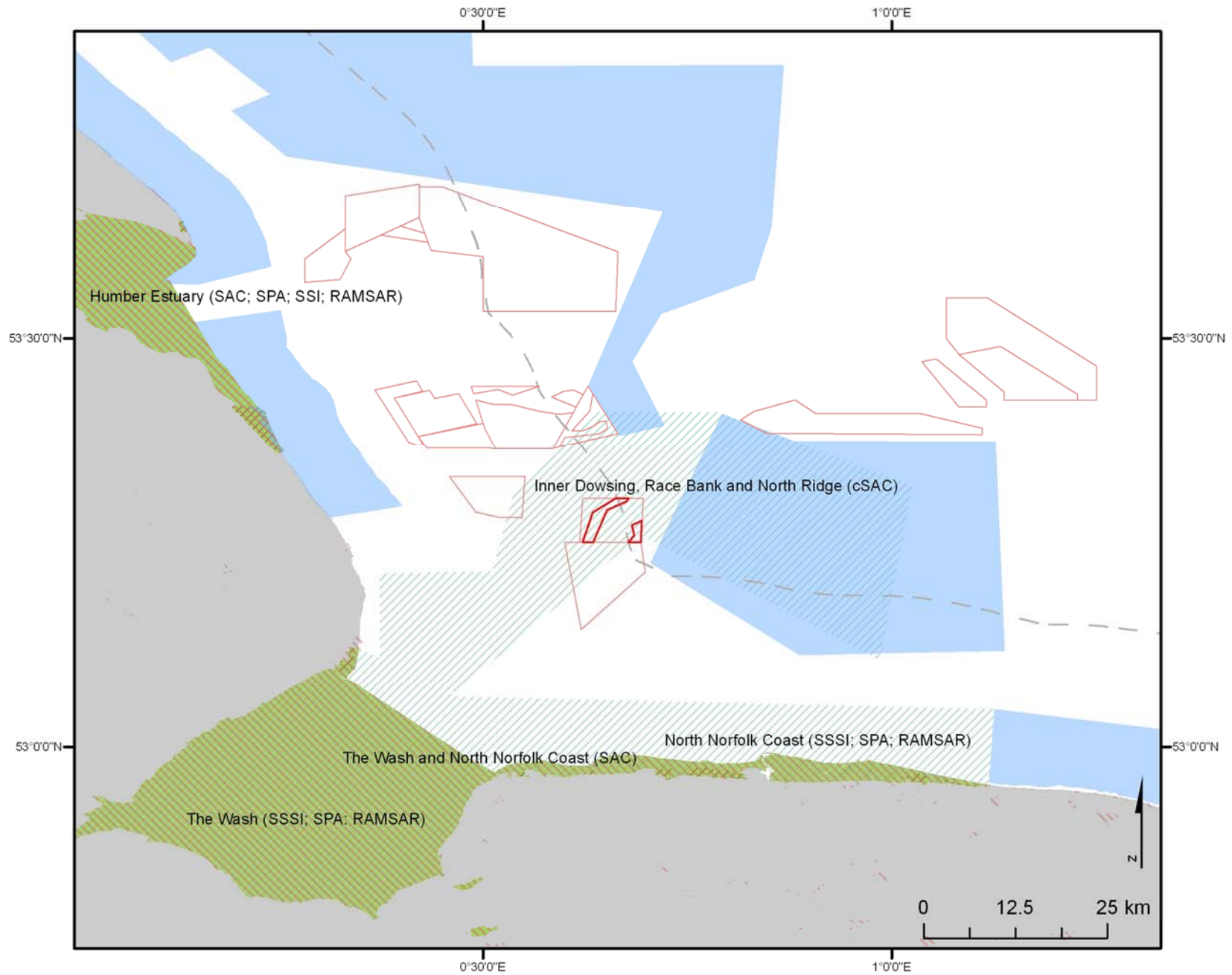
Joint Monitoring Case Study: Aggregate Licence Area 481

Legend

- Aggregate Licence Area 481
 - Other Aggregate Licence Area
 - 12NM Boundary
 - RAMSAR
 - rMCZ
 - SAC
 - SPA
 - SSSI
- Base Mapping**
- England
 - Europe



Co-ordinate System: WGS84



Project	Joint Monitoring
Date	28/02/12
Version	B
Comments	Contains, or is based on, information supplied by Natural England
Author	JP



Marine Planning Consultants
3 Palace Yard Mews
Bath
BA1 2NH
+44 (0)1225 442211 Tel
+44 (0)1225 444411 Fax
www.marineplanning.org.uk

Joint Monitoring

Case Study: Aggregate Licence Area 481

Legend

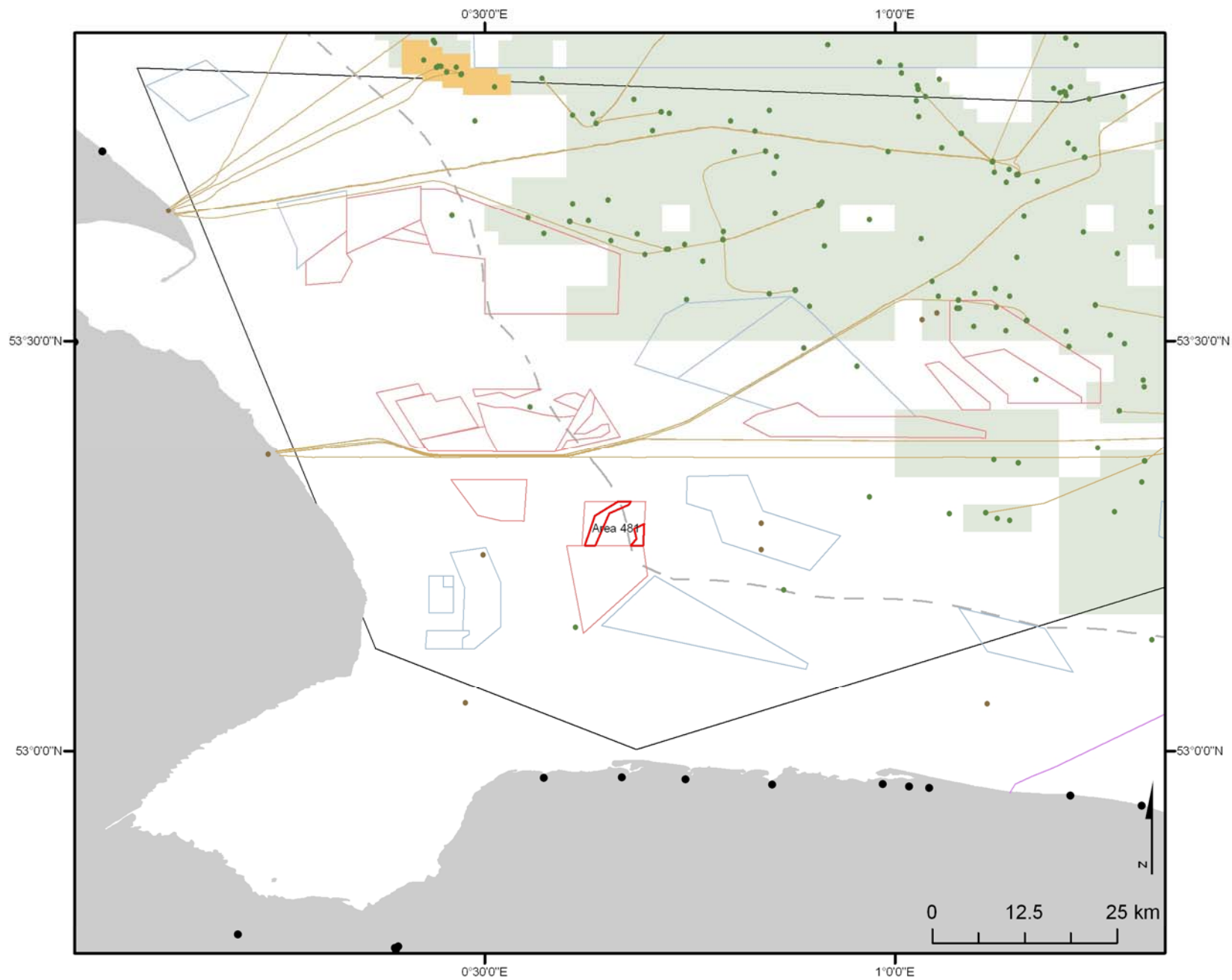
- Port
- Surface Structure
- Well
- 12NM Boundary
- Cable
- Pipeline
- ▭ Aggregate Licence Area 481
- ▭ Other Aggregate Licence Area
- ▭ Lease Area - Gas
- ▭ Licence Area - Oil
- ▭ REC Boundary
- ▭ Wind Farm

Base Mapping

- ▭ England
- ▭ Europe



Co-ordinate System: WGS84



Project
Date
Version
Comments
Author

Joint Monitoring
28/02/12
B
DfT Ports dataset 2012; © Crown Copyright. All rights reserved (2012)
JP


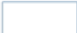








Marine Planning Consultants
3 Palace Yard Mews
Bath
BA1 2NH
+44 (0)1225 442211 Tel
+44 (0)1225 444411 Fax
www.marineplanning.org.uk

Joint Monitoring

Case Study: Outer Thames Wind

Legend

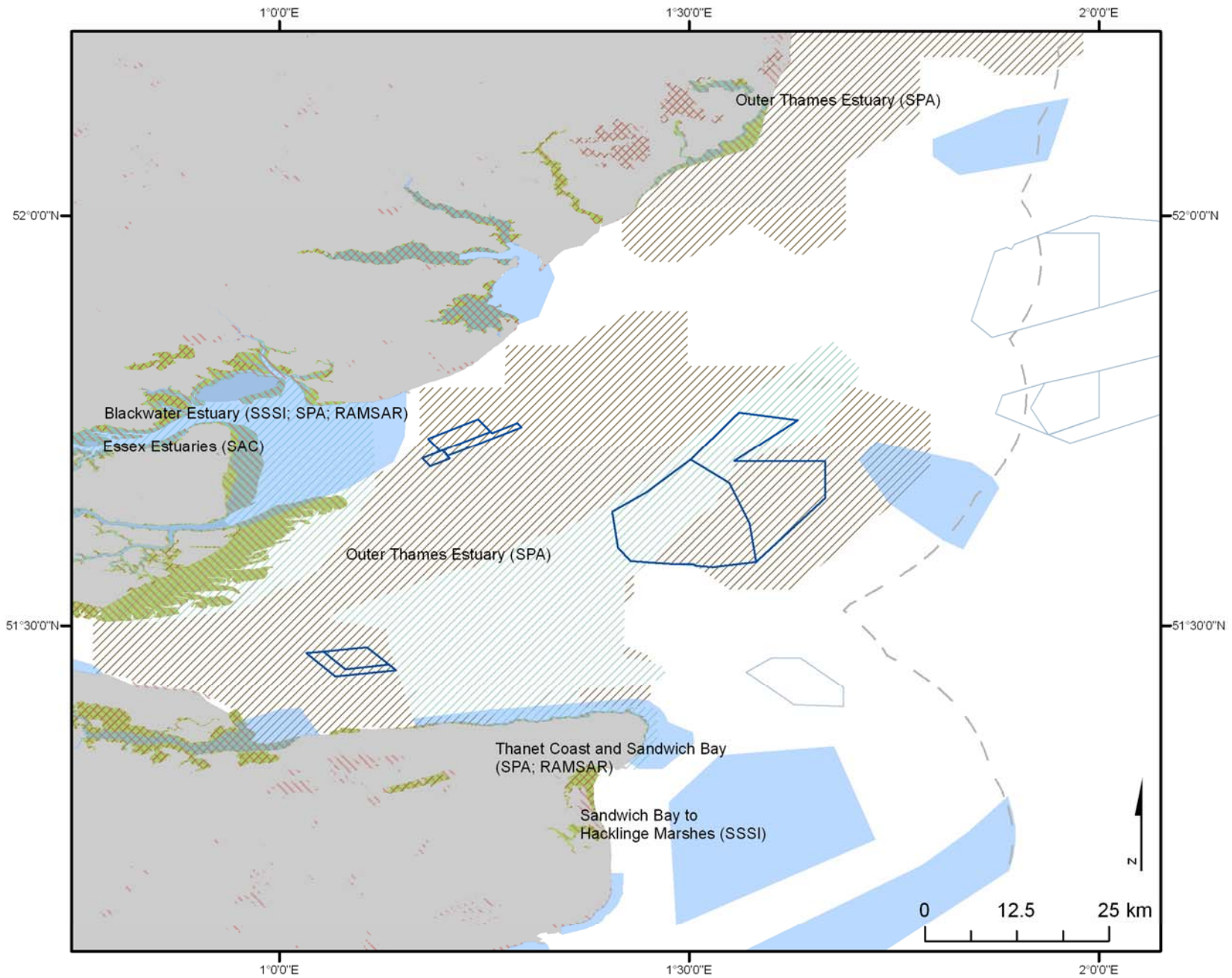
-  Outer Thames Wind Farm
-  Other Wind Farm
-  12NM Boundary
-  RAMSAR
-  rMCZ
-  SAC
-  SPA
-  SSSI

Base Mapping

-  England
-  Europe



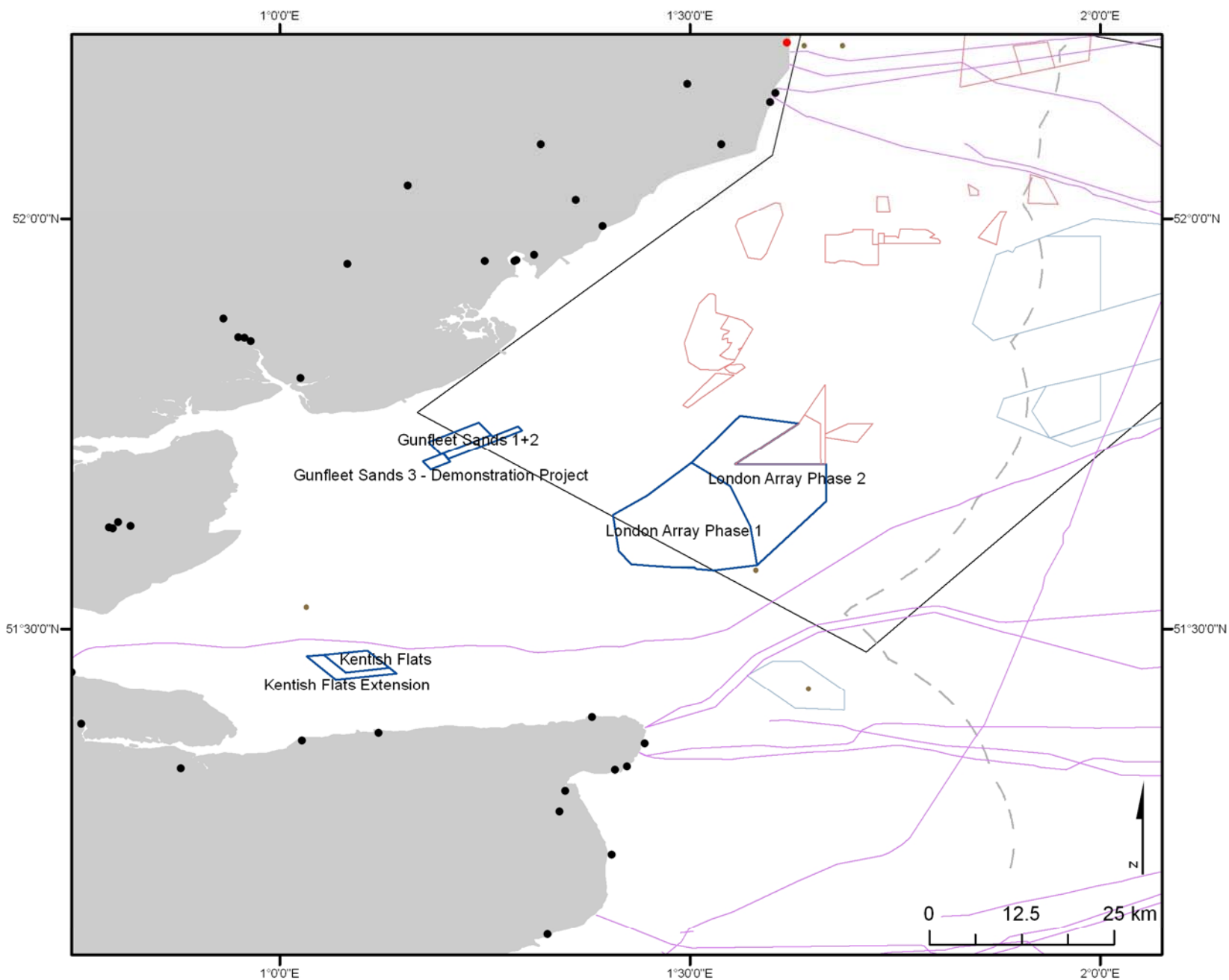
Co-ordinate System: WGS84



Project	Joint Monitoring
Date	28/02/12
Version	B
Comments	Contains, or is based on, information supplied by Natural England
Author	JP



Marine Planning Consultants
 3 Palace Yard Mews
 Bath
 BA1 2NH
 +44 (0)1225 442211 Tel
 +44 (0)1225 444411 Fax
 www.marineplanning.org.uk



Co-ordinate System: WGS84

Project: Joint Monitoring
 Date: 28/02/12
 Version: B
 Comments: DfT Ports dataset 2012; © Crown Copyright. All rights reserved (2012)
 Author: JP



Marine Planning Consultants
 3 Palace Yard Mews
 Bath
 BA1 2NH
 +44 (0)1225 442211 Tel
 +44 (0)1225 444411 Fax
 www.marineplanning.org.uk

Joint Monitoring

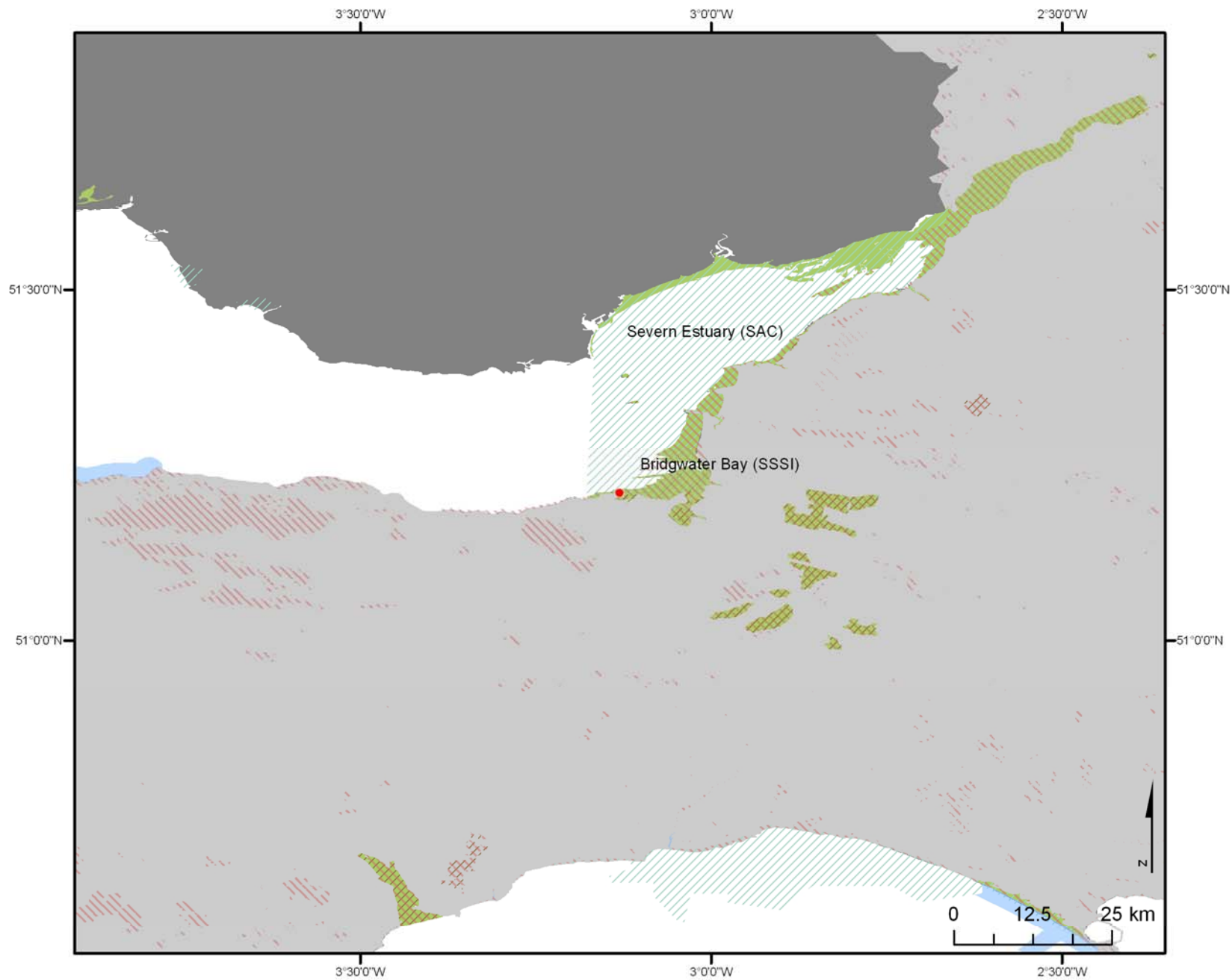
Case Study: Hinkley Nuclear Power Station

Legend

- Hinkley Nuclear Power Station
 - 12NM Boundary
 - RAMSAR
 - rMCZ
 - SAC
 - SPA
 - SSSI
- Base Mapping**
- England
 - Europe



Co-ordinate System: WGS84



Project	Joint Monitoring
Date	28/02/12
Version	B
Comments	Contains, or is based on, information supplied by Natural England
Author	JP



Marine Planning Consultants
 3 Palace Yard Mews
 Bath
 BA1 2NH
 +44 (0)1225 442211 Tel
 +44 (0)1225 444411 Fax
 www.marineplanning.org.uk

Joint Monitoring

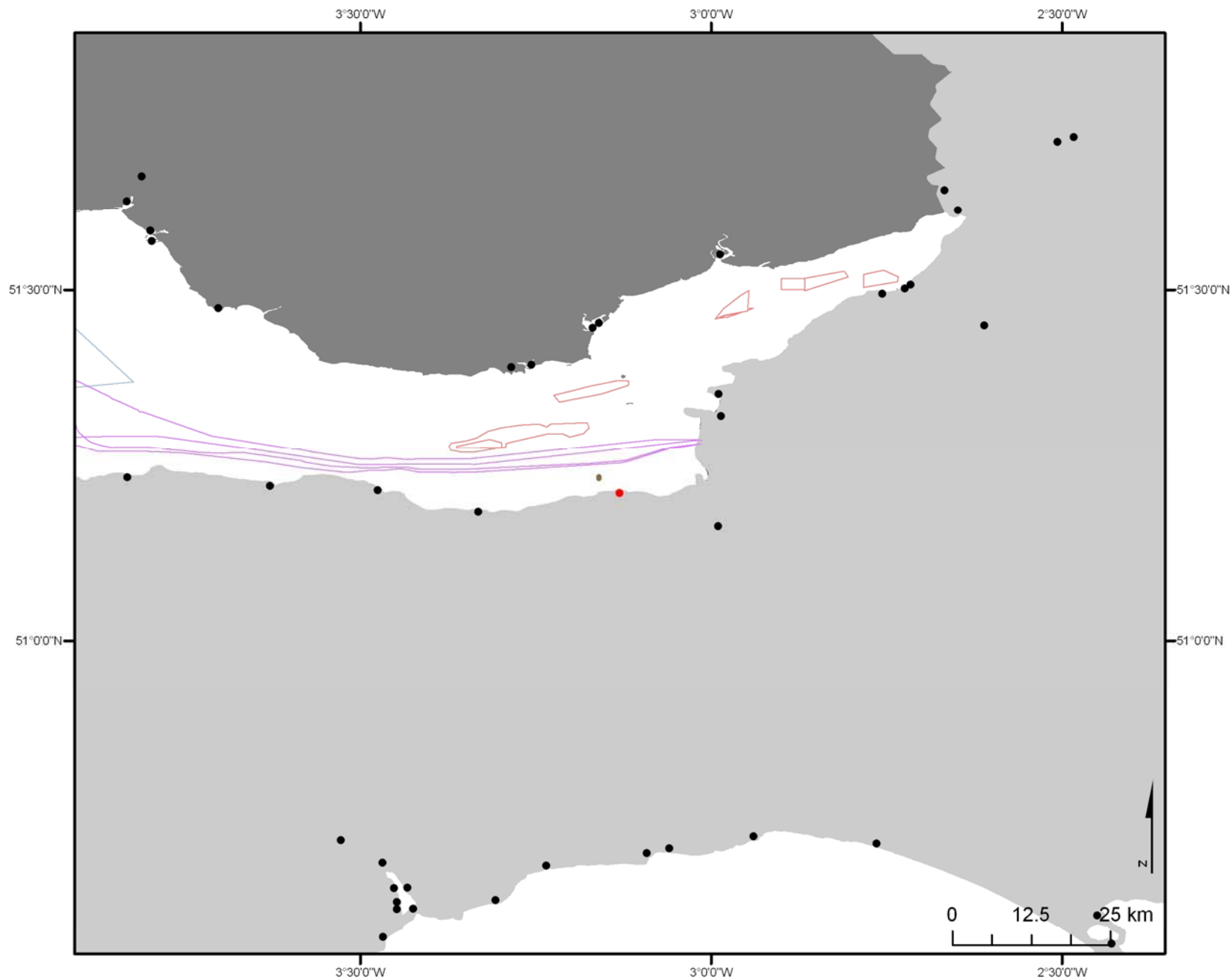
Case Study: Hinkley Nuclear Power Station

Legend

- Hinkley Nuclear Power Station
 - Port
 - Surface Structure
 - Well
 - Cable
 - Aggregate Licence Area
 - Wind Farm
- Base Mapping**
- England
 - Europe



Co-ordinate System: WGS84



Project
Date
Version
Comments
Author

Joint Monitoring
28/02/12
B
DfT Ports dataset 2012; © Crown Copyright. All rights reserved (2012)
JP



Marine Planning Consultants
3 Palace Yard Mews
Bath
BA1 2NH
+44 (0)1225 442211 Tel
+44 (0)1225 444411 Fax
www.marineplanning.org.uk

Joint Monitoring

Case Study: North West Oil and Gas

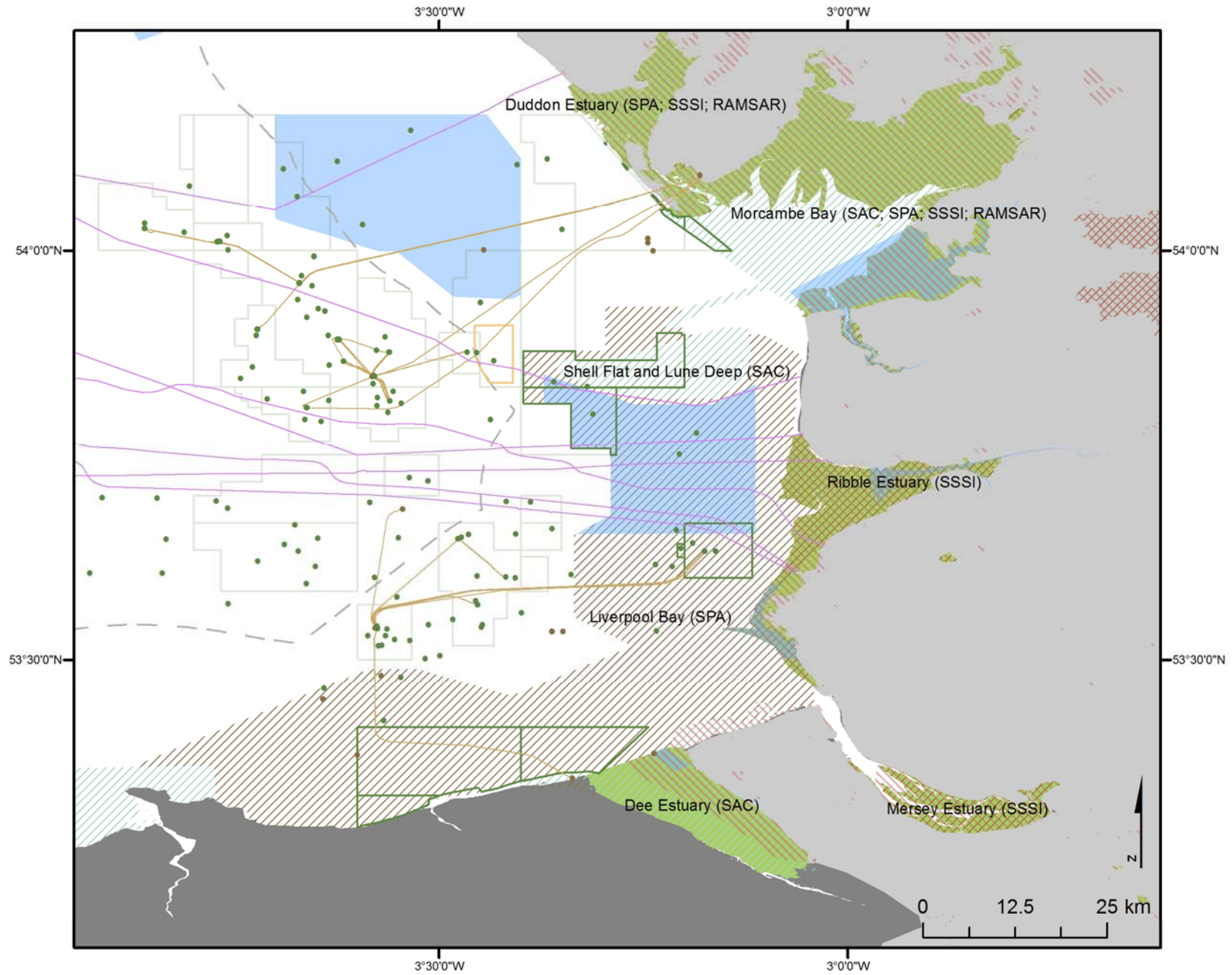
Legend

- Surface Structure
 - Well
 - 12NM Boundary
 - Cable
 - Pipeline
 - North West Oil (No Gas)
 - Other Lease Area - Gas
 - Other Licence Area - Oil
 - RAMSAR
 - rMCZ
 - SAC
 - SPA
 - SSSI
- Base Mapping**
- England
 - Europe



Co-ordinate System:

WGS84



Project
Date
Version
Comments
Author

Joint Monitoring
28/02/12
B
Contains, or is based on, information supplied by Natural England
JP



Marine Planning Consultants
3 Palace Yard Mews
Bath
BA1 2NH
+44 (0)1225 442211 Tel
+44 (0)1225 444411 Fax
www.marineplanning.org.uk

Joint Monitoring


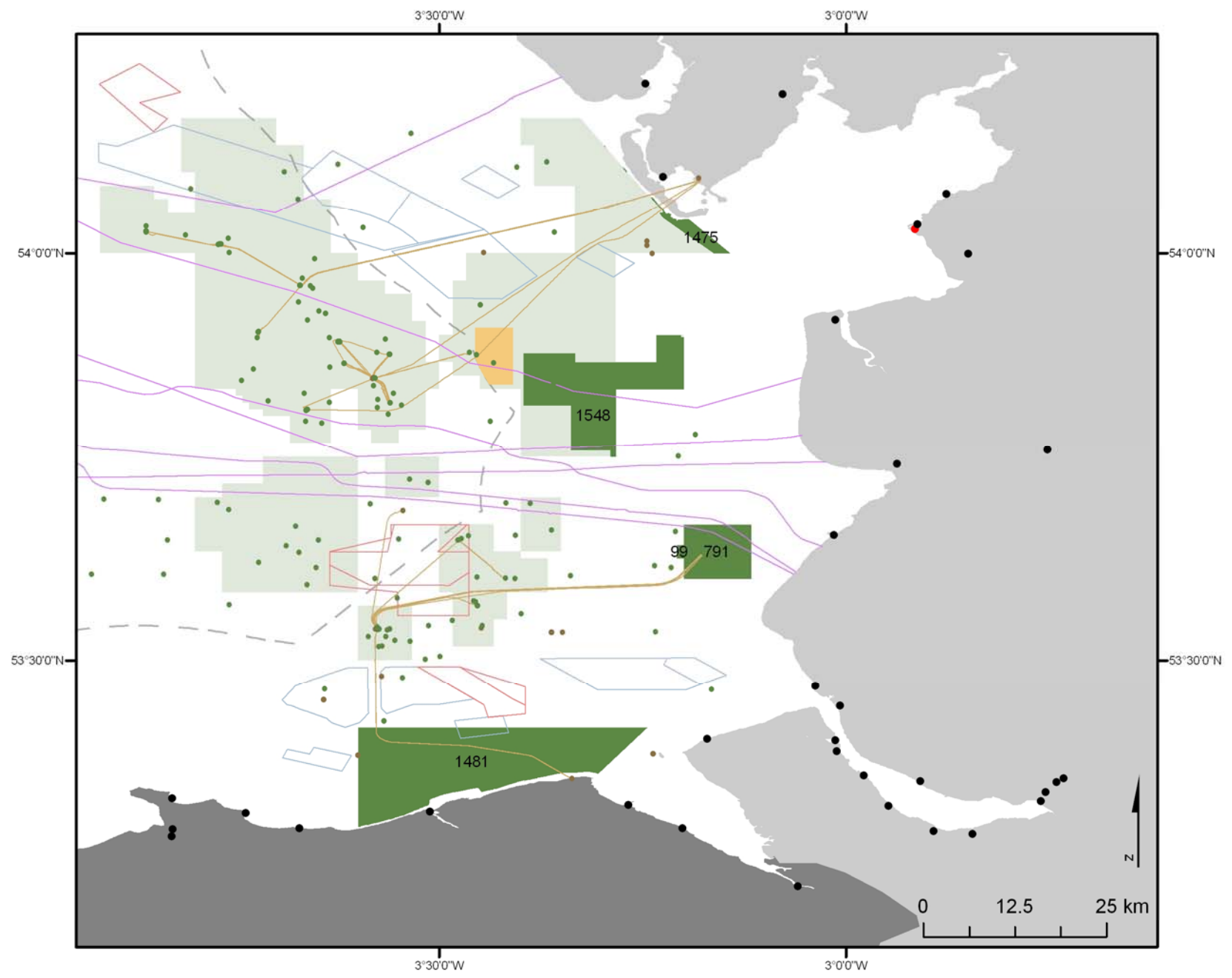
Case Study: North West Oil and Gas

Legend

- Nuclear Power Station
- Port
- Surface Structure
- Well
- 12NM Boundary
- Cable
- Pipeline
- Aggregate Licence Area
- North West Oil (No Gas)
- Other Lease Area - Gas
- Other Licence Area - Oil
- Wind Farm

Base Mapping

- England
- Europe

Co-ordinate System: WGS84

Project: Joint Monitoring
 Date: 28/02/12
 Version: B
 Comments: DfT Ports dataset 2012; © Crown Copyright. All rights reserved (2012)
 Author: JP



Marine Planning Consultants
 3 Palace Yard Mews
 Bath
 BA1 2NH
 +44 (0)1225 442211 Tel
 +44 (0)1225 444411 Fax
 www.marineplanning.org.uk