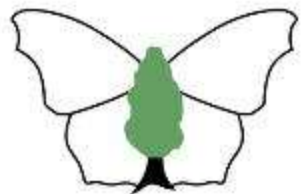


Woodfuel and Woodland Management in the MORECAMBE BAY LIMESTONES NIA



Butterfly
Conservation

Martin Wain, woodland advisor

Ambe Bay Limestones Project



Grange over Sands



Arnside and Silverdale AONB



**Making Space for Nature:
A review of England's Wildlife Sites and Ecological
Network**

Chaired by Professor Sir John Lawton CBE FRC

Issued to the Secretary of State, the Department for Environment, Food and Rural Affairs on 18 September 2010

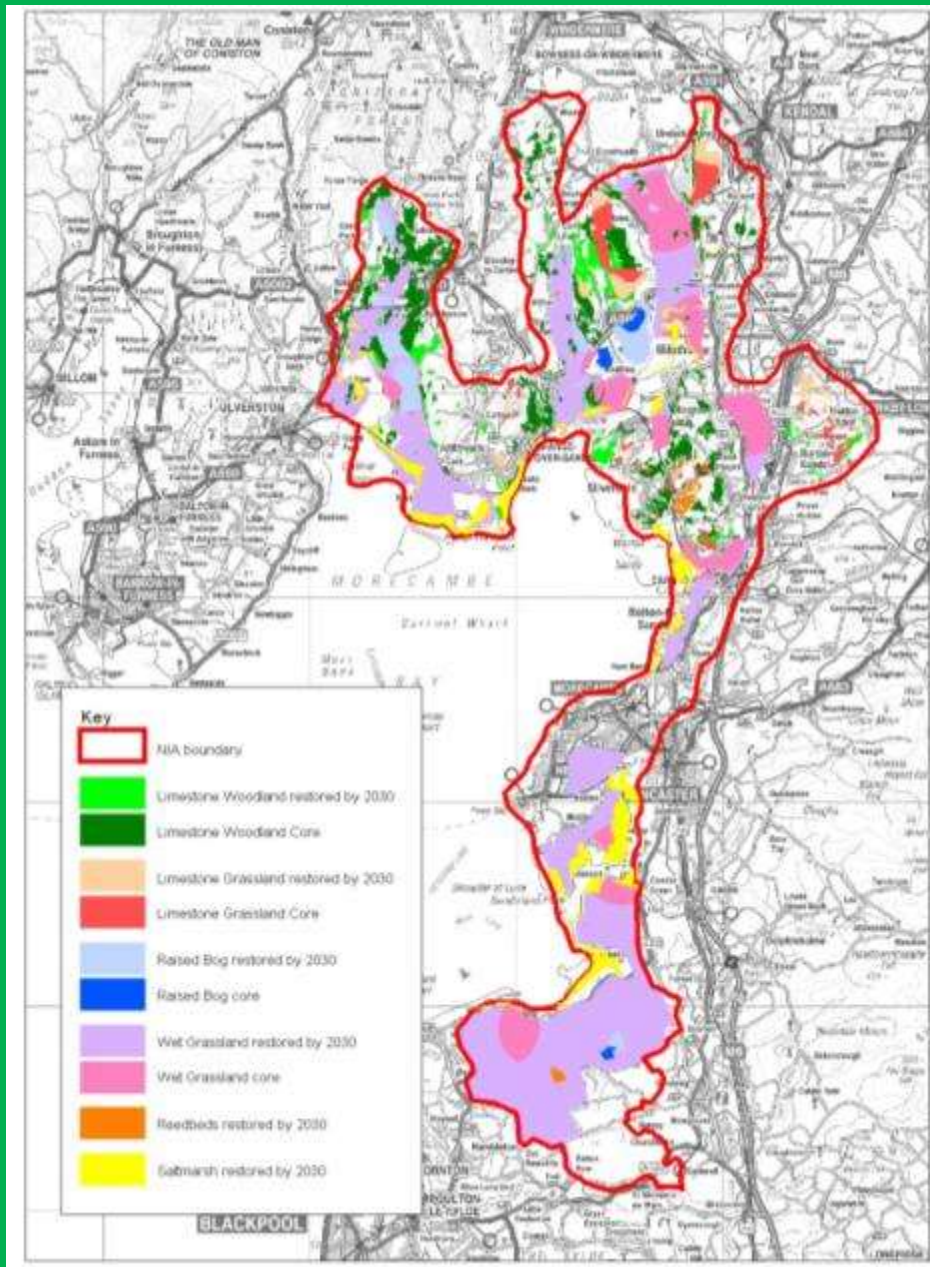
NIA's were part of the White paper – 2010 Making Space for Nature

More, bigger,
better, more
connected



NIA

Morecambe Bay Limestones and Wetland Nature Improvement Area





To work with local Businesses, Landowners and Communities, for wildlife benefit.

Manage Priority Habitat

Buffer connect and create stepping stones across the landscape

Work with the planning system

Connect people to nature

Priority Limestone Woodland areas







Limestone Pavement



Bracken Glades





- **High Brown Fritillary and Pearl Bordered Fritillary - Violets in bracken and woodland clearings**



Limestone Habitat MOSAIC

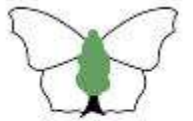


WIGS are able to promote
WOODFUEL PRODUCTION





Forestry Commission
England



Butterfly
Conservation





Forestry Commission
England

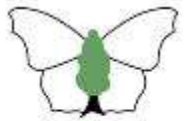


Butterfly
Conservation





Forestry Commission
England

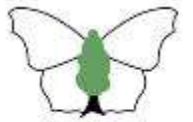


**Butterfly
Conservation**





Forestry Commission
England



Butterfly
Conservation







So far, to promote wood fuel use and to bring wildlife benefits, the NIA has supported

- *18 local business,
- *32 landowners and
- *developed 11 community woodland groups



*funding to bring 300 Ha of woodland, which is Priority Habitat, into wood fuel and wildlife habitat management.



And 3 Ha cutting for quality hazel coppice

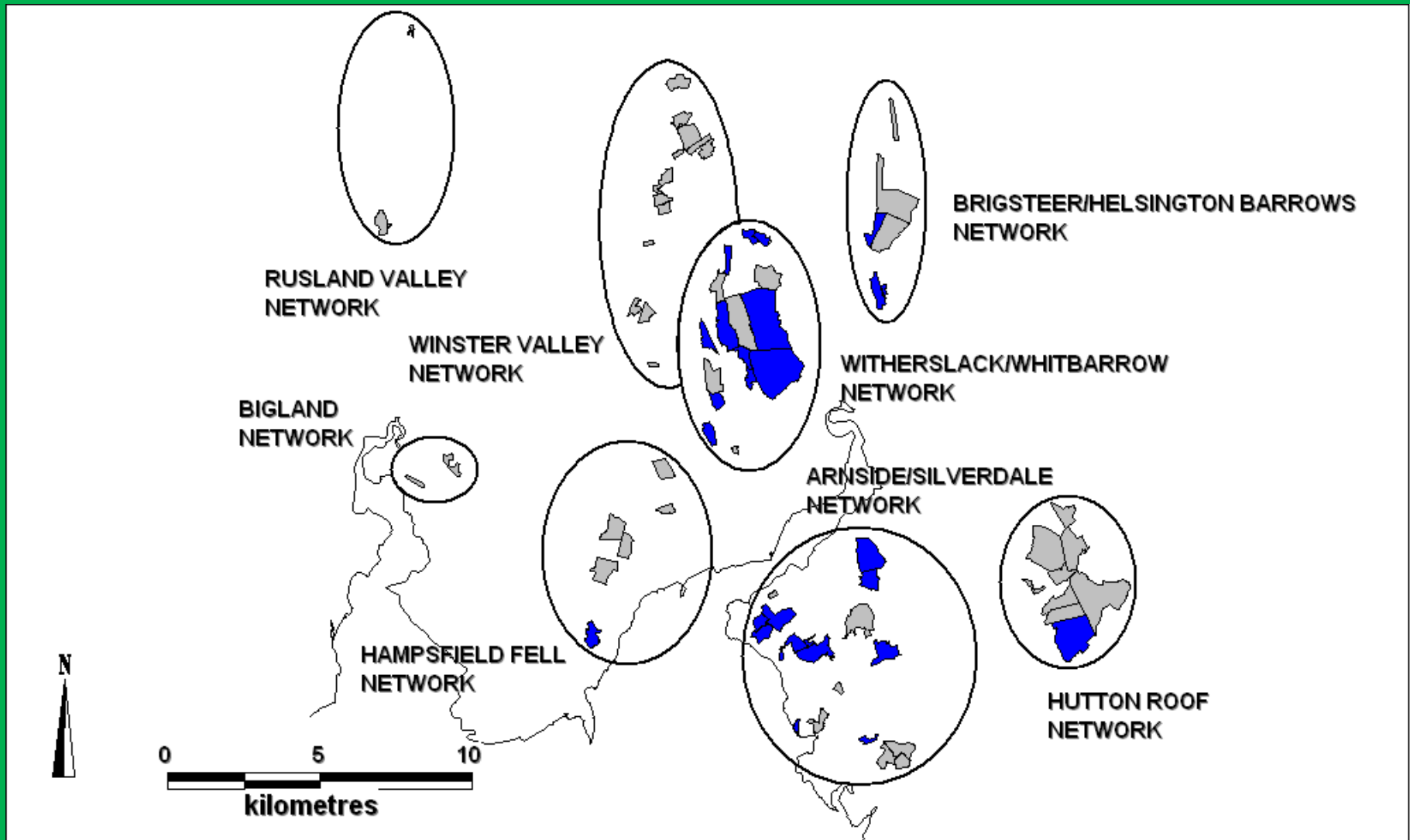


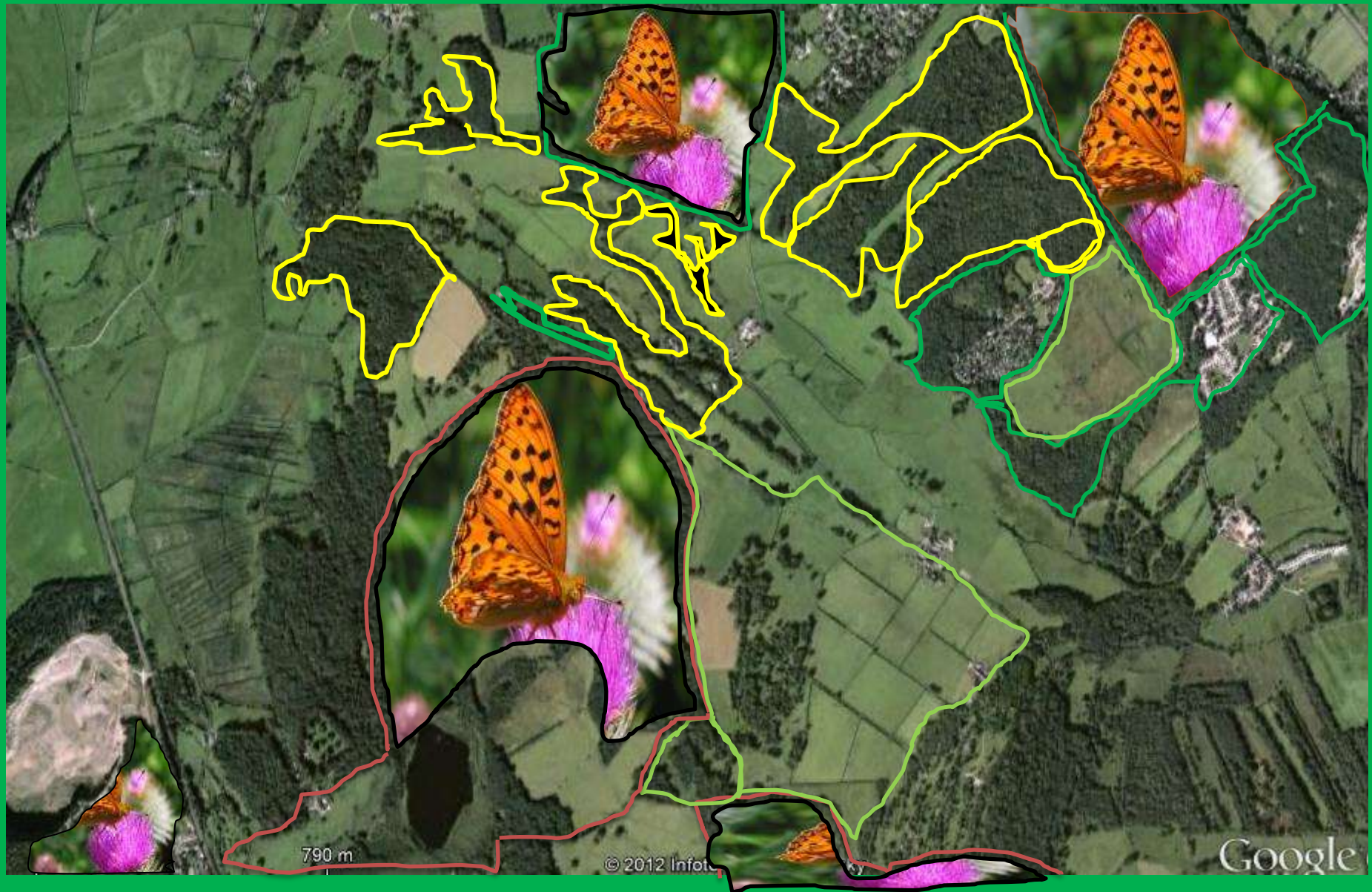
Woodland Improvement Grants help to pay...
for cutting and to support processing and extraction

Our work is to

Encourage landowners, link contractors with landowners,
develop the wood fuel chain and find benefits for butterflies

Extant (blue) and extinct (grey) High Brown Fritillary sites in the Morecambe Bay Limestones landscape in 2010





Progress made by contactors



and by volunteers

Volunteers Summary

- 19 work parties L/M FE College,
- 9 Piccadilly Gardens Adult learning group
- 2 work parties - Help the Aged,
- 2 with Environment Agency
- 25 open work parties including Lancashire Branch,
- 8 work parties with partner organisations,
- 2 work party's for the International Women's Soroptomists groups,
- 1 with the Gregson Cricket Club.



Beetham Caravan Park Fell End CP Beetham Fell Holgates Kirk Head Coldwell Parrock Farm Grange Woodlands

