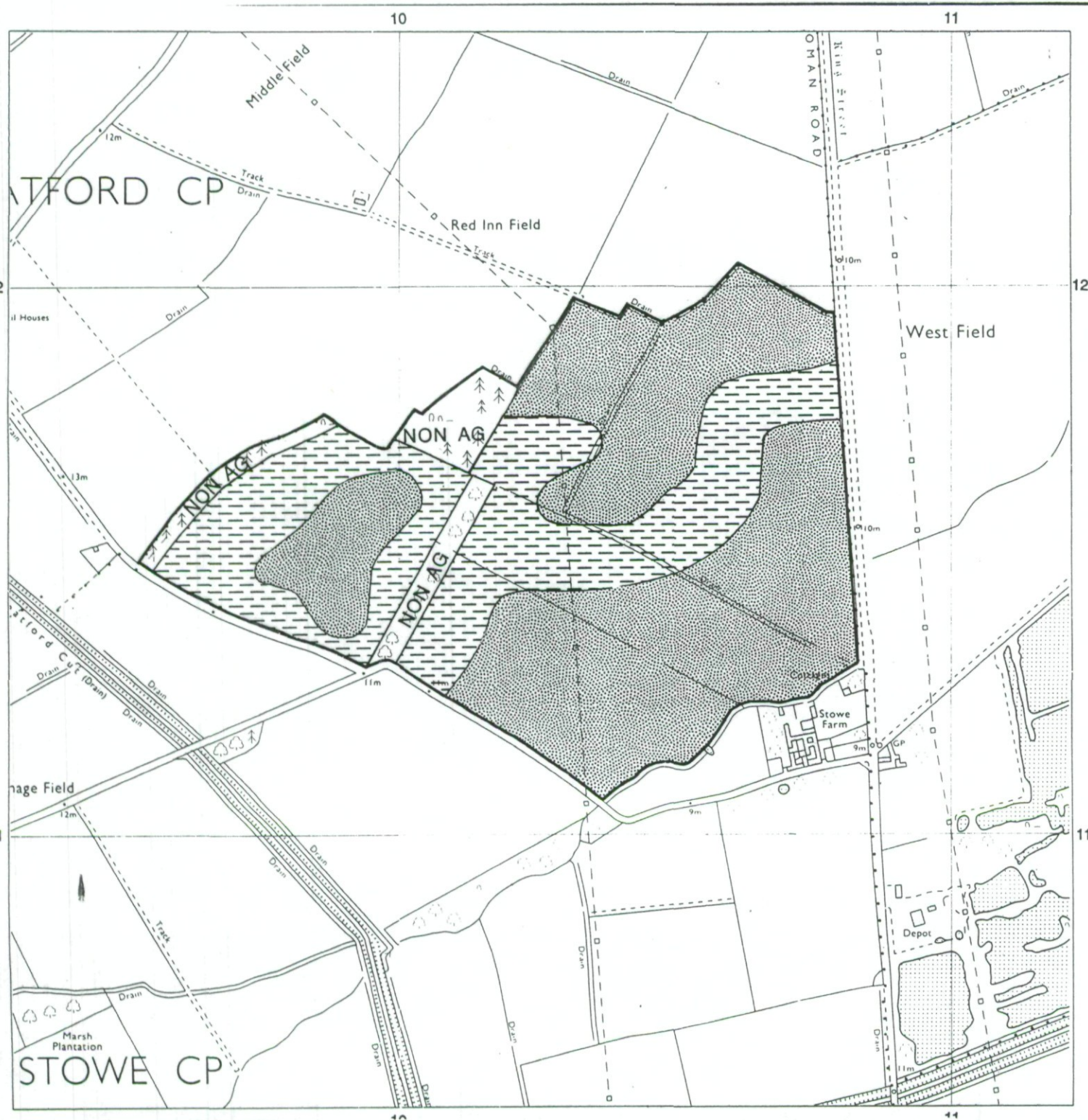




# SOIL TYPES

## Stowe Farm (No. 2), West Deeping, Lincs.

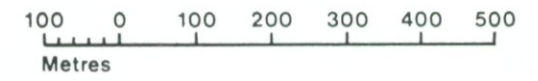


Soil Type	Topsoll 0-35cm	Upper Subsoil 35-40/60cm	Lower Subsoil 40/60-120cm
<b>A</b>	V. sli stony MCL	Sli stony (or occ mod stony) MCL	Sli or mod stony MCL, SCL or SL over gravelly material (50/80cm+)
<b>B</b>	Sli stony MCL	Gravelly material or sli. stony MCL or SL	Gravelly material (40/45cm+)

SOURCE MAPS Base maps taken from the O.S.  
Sheets TF 01 SE &  
TF 11 SW

This map is accurate only at the scale shown.  
Any enlargement could be misleading

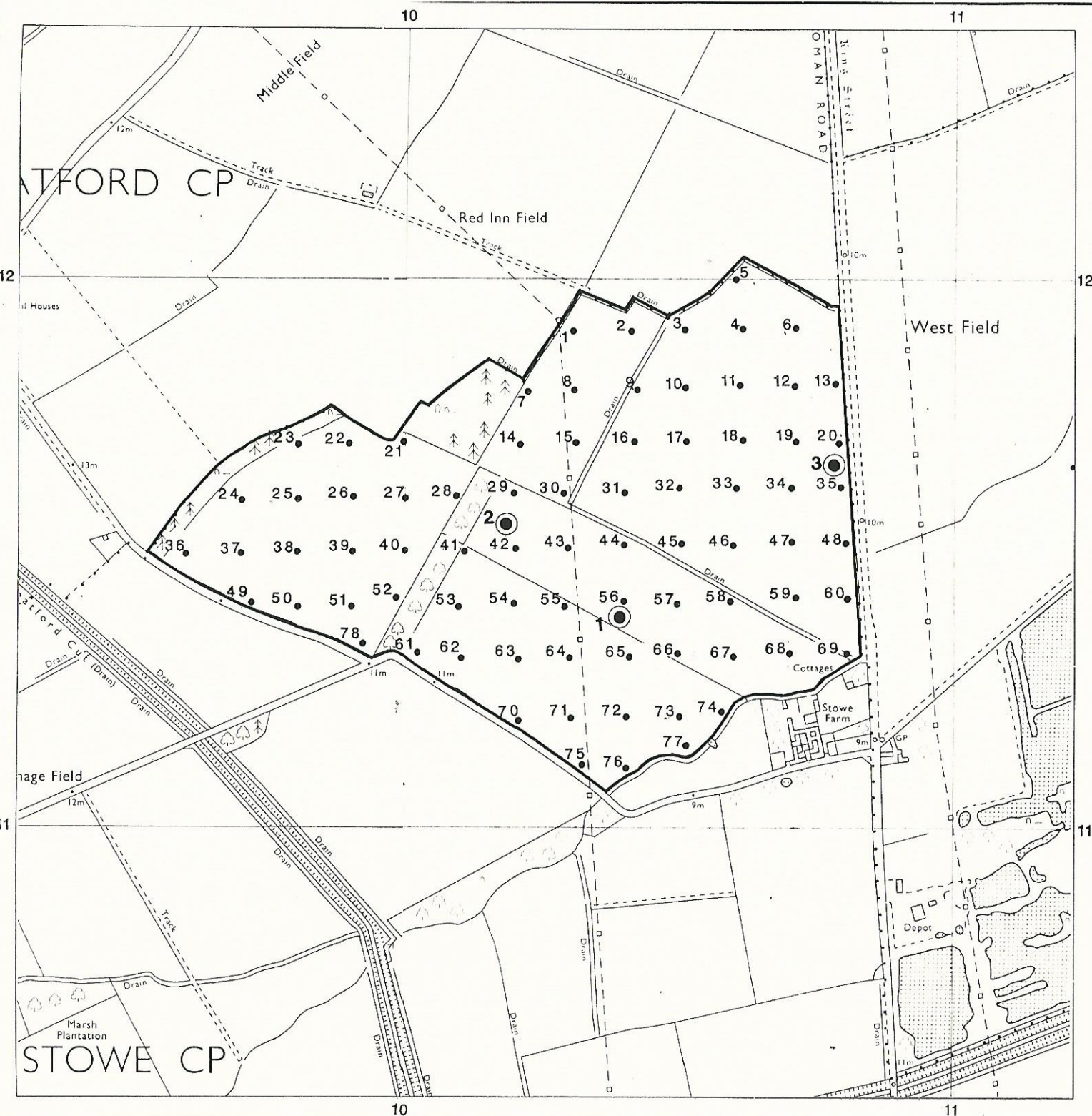
Scale 1:10 000



Drawn by the Cartographic Unit,  
Farm & Countryside Service  
Cambridge. Ref. L/67/89  
Ordnance Survey maps reproduced  
with the permission of the Controller,  
H.M.S.O.



# Agricultural Land Classification Stowe Farm (No. 2), West Deeping, Lincs.

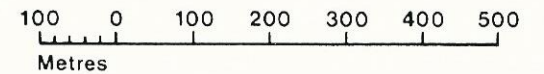


- Location of auger boring
- Location of soil pit

SOURCE MAPS Base maps taken from the O.S.  
Sheets TF 01 SE &  
TF 11 SW

This map is accurate only at the scale shown.  
Any enlargement could be misleading

Scale 1:10 000



Drawn by the Cartographic Unit,  
Farm & Countryside Service  
Cambridge, Ref. L/67/89  
Ordnance Survey maps reproduced  
with the permission of the Controller,  
H.M.S.O.  
© Crown Copyright reserved 1989

