

- Lessons learnt
- Countryside Stewardship funding for woodlands 2016

Overall effect of the NIA programme on landscape-scale delivery?

- The awareness of the landscape scale approach has improved and partnership working has been occurring in more areas, importantly outside of protected areas.
- Countryside Stewardship targeting based on Professor Lawton principles

Has the NIA programme changed attitudes towards landscape-scale conservation?

- Yes the fact that the near-miss NIAs which missed out on the funding still went ahead should be seen as a positive message for the NIA concept.

Has the NIA programme affected the frequency, nature and quality of partnership working on landscape-scale conservation?

- The real win has been getting people involved in partnership working in non-protected area.

In what ways has your organisation contributed to the NIA programme?

- The FC has a regulatory role (around tree felling) which has been important as many NIAs have looked to restore open habitats [which can involve removing woodland cover].
- 'A no surprises approach'. The NIA project officers have shared their plans in advance and this has led to effective joint working around habitat change with the FC.

How do NIA outcomes differ from previous approaches to landscape-scale conservation?

- This is one of the first such initiatives where the Defra family have worked together effectively.

What has worked well about the NIA programme?

- Awareness of the landscape scale approach has improved.
Partnership working occurring in more areas (outside of protected areas).
- Commitment to monitoring.

What has surprised you most about implementation of the NIA programme?

- The **enthusiasm** of those involved.

Countryside Stewardship Funding for Woodland 2016



Countryside Stewardship

Funding for woodlands

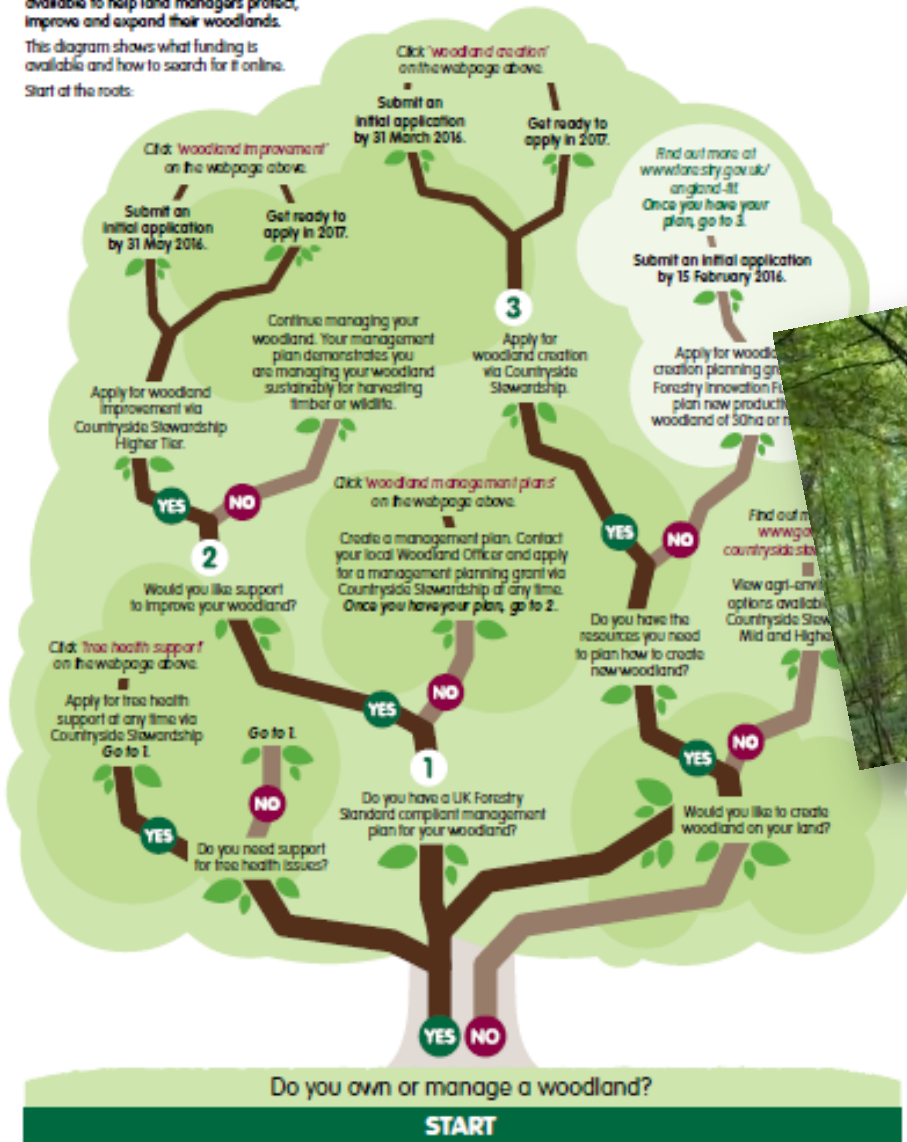
Read more:

www.gov.uk/government/collections/countryside-stewardship-woodland-support

A number of funding opportunities are available to help land managers protect, improve and expand their woodlands.

This diagram shows what funding is available and how to search for it online.

Start at the roots:



Countryside Stewardship is a Rural Development Programme for England (RDPE) grant scheme. It will contribute around £900 million over six years to help land managers look after the environment.

Countryside Stewardship is open to farmers, foresters and land managers.

It is competitive and applications will be scored against local priority targets to maximise environmental benefit.

Woodland is one of the scheme's priorities and funding is available to:

- create new woodland
- support the preparation of management plans
- address tree health issues
- improve existing woodlands



<http://bit.ly/1Pkelym>

2016 application timetable for CS

