



Department
for Environment
Food & Rural Affairs

Feedback from Year 1 Monitoring & Evaluation and Next Steps

Rebecca Jackson-Pitt (*Natural England*) /
Chris Hill (*GeoData Institute*)

25th Sept 2013
South Downs Way Ahead NIA
Best Practice Event



Overview

- Feedback from Year 1 Monitoring and Evaluation
- Ecosystem Services Theme
- Next steps
- Engagement



Year 1 progress report



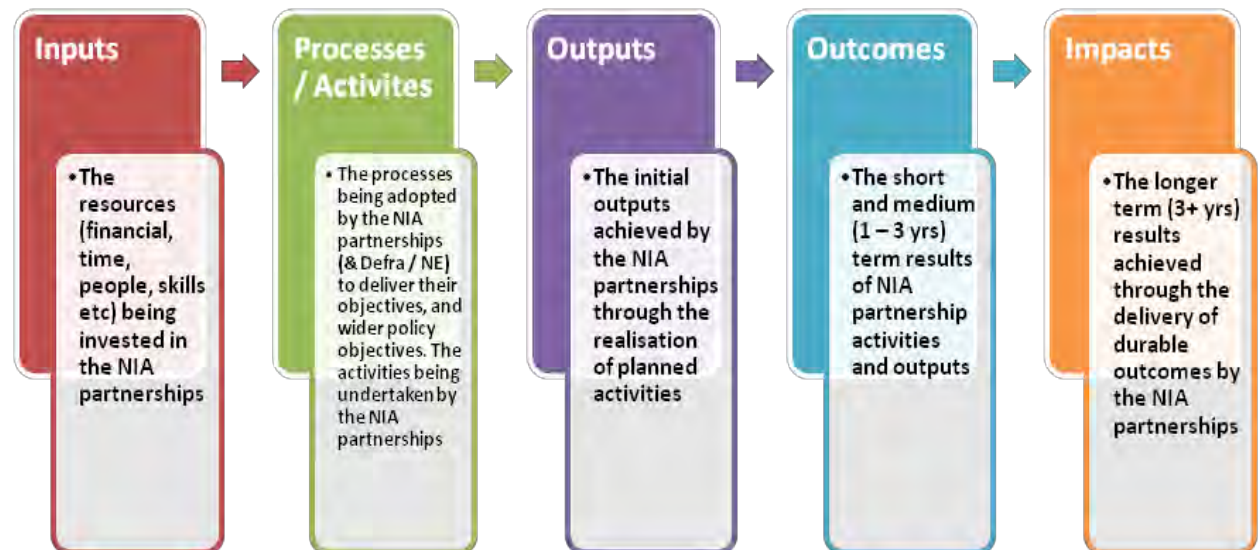
Available on:

- Natural England NIA web pages
- Huddle NIA Best Practice Network

Evaluation

Year 1 Aims

- Overview of progress during first year of activity
- Indication whether the NIAs individually and collectively are on trajectory to meet objectives
- Establishing and testing approach to M&E and potential supporting data
- Assessing inputs and processes rather than outcomes and impacts



Sources of Information

- Data submitted under the indicators reported via the online reporting tool
- NIA business plans and funding agreements
- Quarterly progress reports
- Annual summary progress report and financial reporting
- Data and analysis provided centrally by Natural England for certain indicators

Achievements

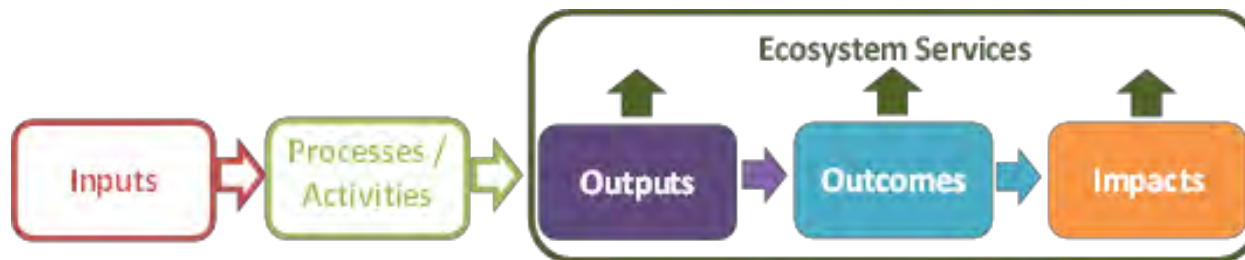
All NIAs have been successful in delivering practical activities during Year 1

- Establishing project teams and management structures
- Finalising partner responsibilities
- Securing additional funding
- Planning projects
- Community engagement
- ‘On the ground’ delivery

and challenges ...

Ecosystem Services Theme

- All NIAs are using the concept of ecosystem services to support the identification and rationale for their projects. Although only some are currently framing specific projects around ecosystem services and using the language and concept explicitly.
- Those projects that are targeted at increasing the provision of ecosystem services are fairly evenly distributed across provisioning, regulating and cultural services. There are limited examples of NIAs focussing on supporting ecosystem services.



Project Examples

Training delivered on resource protection and soil management in Northern Devon NIA

Morecambe Bay NIA 'woodshare' scheme

Major access routes for visitors restored in Dark Peak NIA

Training delivered on the Woodland Carbon Code within Northern Devon NIA

Digital maps produced showing density of bees and other pollinators across Nene Valley NIA

School groups visits to the River Torridge with a storyteller, Northern Devon NIA

Dearne Valley NIA school visits and a range of working with schools initiatives



Ecosystem Services Indicators

Sub-theme	Indicator	Category	NIAs reporting
Cultural services	Local measures of extent of land managed to enhance landscape character	Optional	1/3
	Length of accessible PROW and permissive paths	Optional	4/5 (partial)
	Condition of historic environment features	Optional	0
	Access to natural greenspace and/or woodland	Optional	3/3 (partial)
	Local indicator of cultural services	Optional	0/1
Supporting services	Area of habitat supporting pollinators	Optional	0/0
	Local indicator of riparian habitat under sympathetic management which benefits pollinators	Local	0/1
	Local indicator of supporting services	Local	1/1
Regulating services	Contribution to water quality	Optional	3 /8 (partial)
	Contribution to carbon storage & sequestration	Optional	4/5 (partial)
	Local indicator of area of new habitat created for pollinators	Optional	0/1
Provisioning services	Area of more-sustainable agricultural production	Optional	7/9 (partial)
	Percentage of woodland in active management	Optional	7/8 (partial)
	Woodland use for energy production	Local	1/1 (partial)

Overlaps

- Overlaps between the evaluation of ecosystem services and that of social, economic and wellbeing aspects and the habitat connectivity indicator



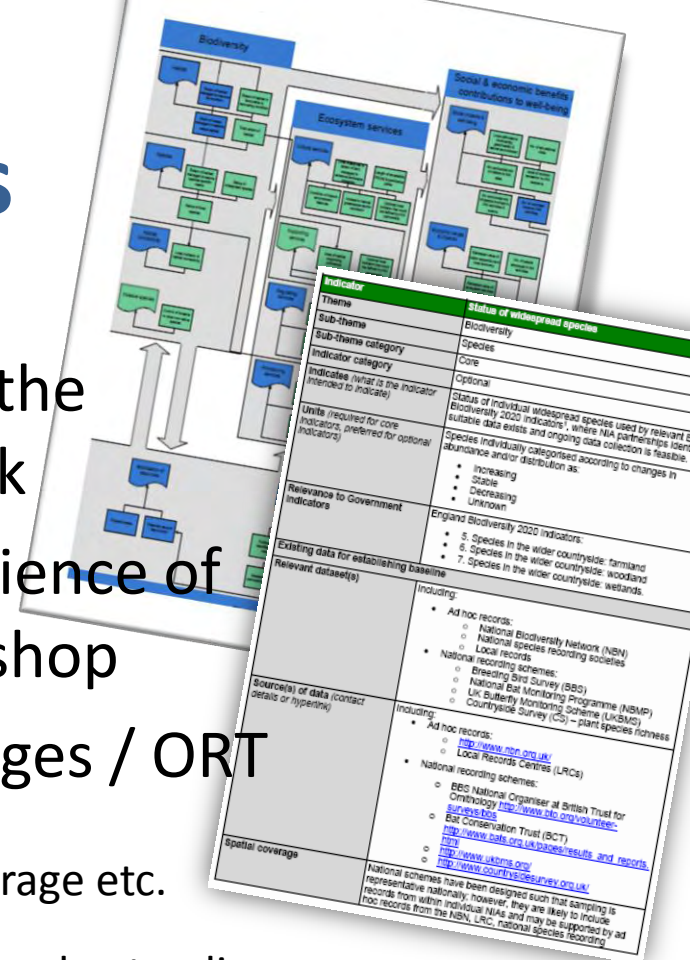
Challenges

- Establishing baseline situation
- Comparative analysis/
counterfactuals
- Innovation and the need to
develop new approaches in
several areas (particularly
habitat connectivity, ecosystem
services and socio economic)
- Technical issues and guidance
particularly around the
indicators and online reporting
tool



WP 1 Review of Protocols

- **Scope: T1.2** Refining and developing the monitoring and evaluation framework
- **Inputs:** Yr 1 support activities / experience of the NIAs, specific NIA projects, Workshop
- **Outputs:** Recommendations for changes / ORT
 - **Data** – e.g. availability, collection, accuracy, coverage etc.
 - **Baseline** – e.g. availability of existing baseline, understanding.
 - **Calculation** – e.g. methods for calculating values./ change
 - **Indicator interpretation** – e.g. how to interpret, links / overlaps with other indicators.
 - **Support** – e.g. what is available / was used in Year 1, gaps in support etc.



WP 1 Development of ORT

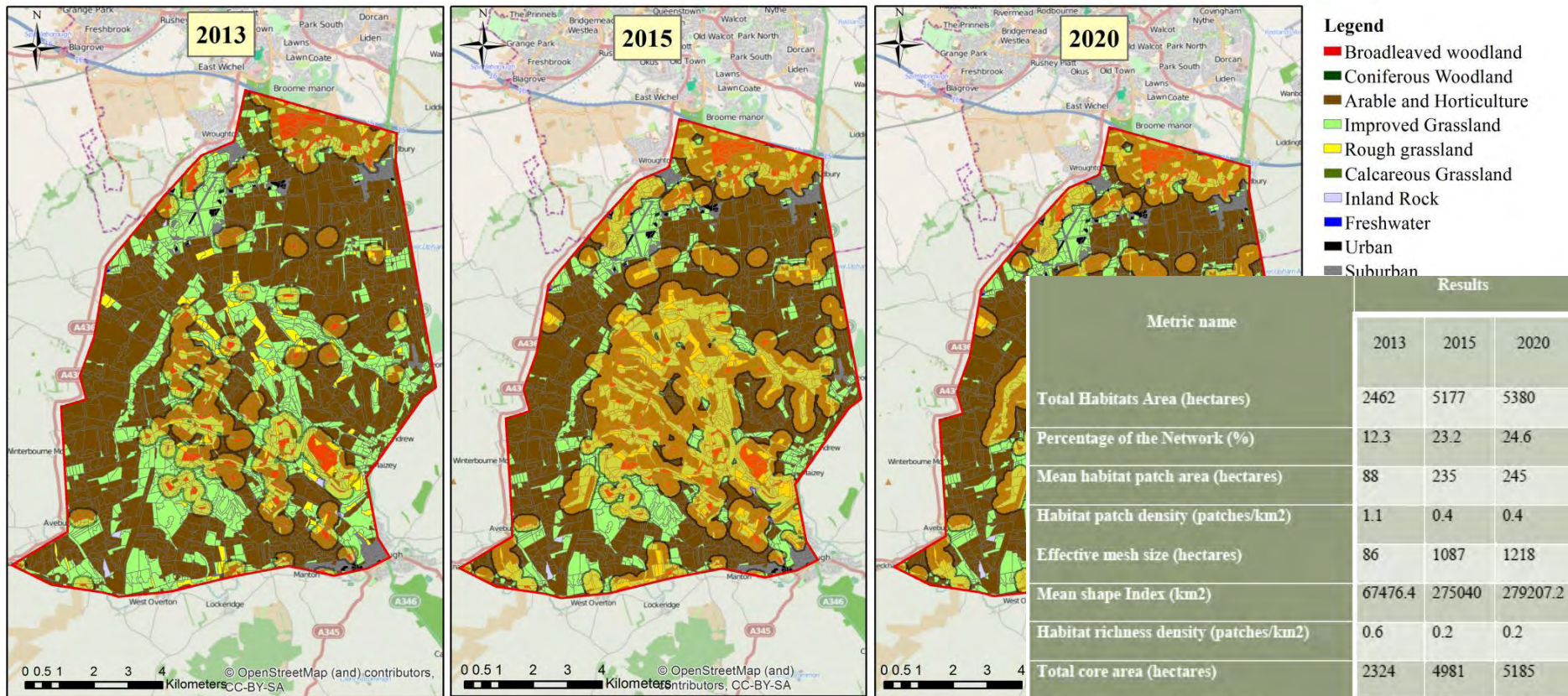
- **Scope:** T1.2 Reviewing and developing the online reporting system
- **Inputs:** Lessons from Yr 1 support / workshop session: *i) interface, ii) functionality, iii) navigation iv) support v) reporting.*
- **Outputs:** Developments / Training
 - Introduction tool / help boxes
 - Registration simplification / explanation
 - Saving and submitting
 - Editing ability (word limits / corrections)
 - Baseline / cumulative
 - Visualisations



WP2 Specific indicators review

- **Scope: T2.1** Developing, testing and providing support for SMART indicators for i) habitat connectivity and ii) ecosystem services
- **Inputs:** i) WP 1 review ii) Defra ES pilots with NIAs (HL/MB/DP/SD) iii) Workshop iv) literature review, v) related Defra / NE activities
- **Engagement:** NIA meetings, existing pilots (NIA ES pilots) Consultation on draft / link to other meetings
- **Outputs:** Recommendations to Defra / NE
 - Modifications, Modelling, ORT implications

Example: MD NIA connectivity



Marlborough Downs:

- **Locally-derived focal species**
- **Interpretation important element – not all connectivity is +ve**
- **Only as good as data that drives it**

WP3 Social and Economic Indicators

- **Scope:** Focus on external measures – not new NIA survey, no changes to ORT
- Highlighted gaps: i) Health, ii) Social Inclusion, iii) Economic Outcomes
- **Input:** Literature review (June 2013) / Workshop / Sciencewise
- **Engagement:** Workshop/s (Nov - TBC), Work in detail with NIAs (4) T2.2 /T3.4
- **Outputs:** Report, recommendations / options for enhanced reporting
- **Lead:** Clare Twigger-Ross (CEP)





Questions