

ALC  
GROTTINGTON O.C.C.S. JG 50 D

NY 96 NE 1:5,000

1 boring per ha.



Grottington Cottages

Whittington Dean

Little Whittington

Shaft (Disused)

4  
Shaft (Disused)

Mine (Disused)

Urban

Whittington Fell

Spring

MS

3B

3A

3B

River Pond

Spring

4

3B

FB

Path

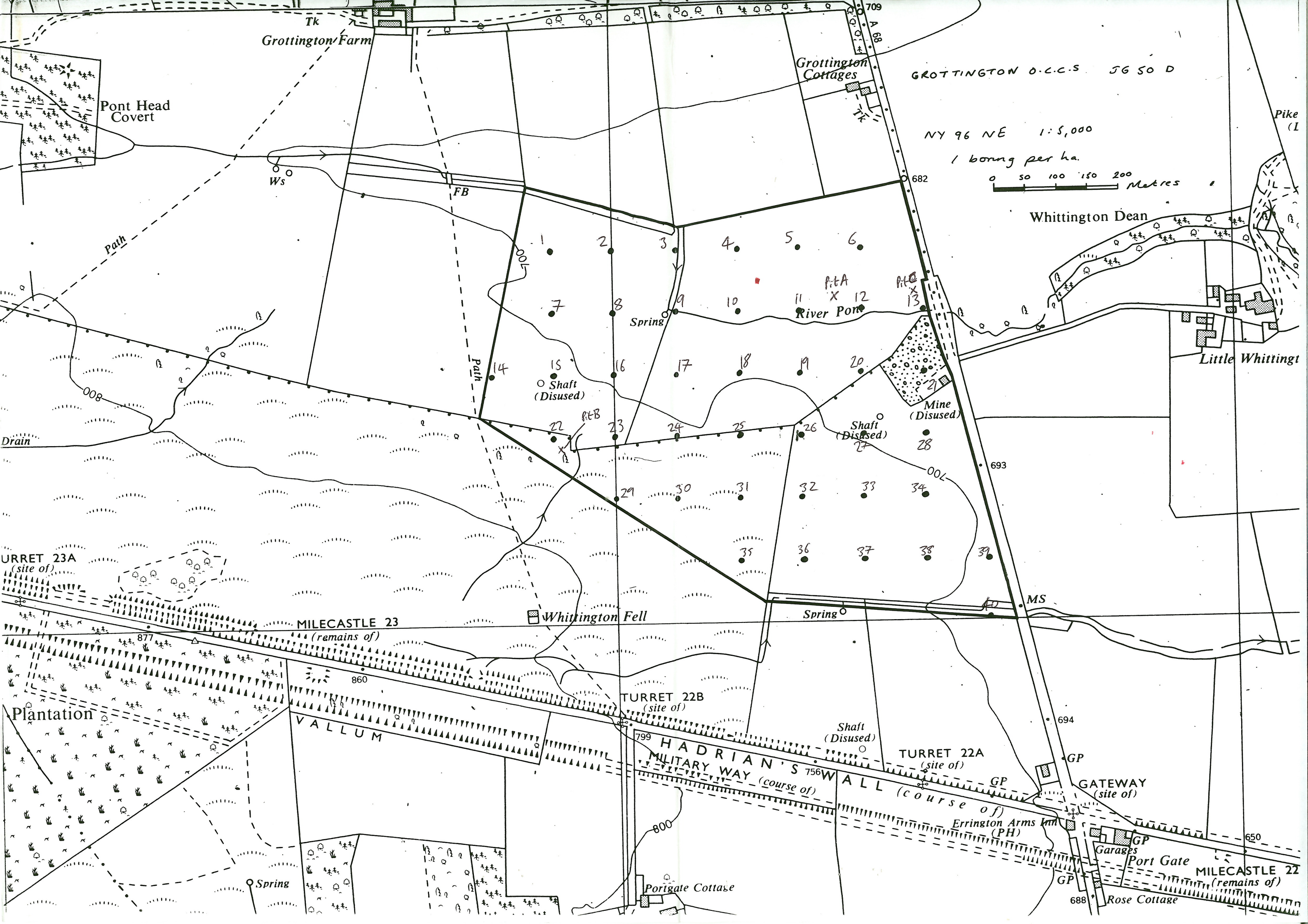
TK

682

693

709

Pike (I)



Grottington Farm

Grottington Cottages

GROTTINGTON O.C.C.S JG 50 D

NY 96 NE 1:5,000

1 barrow per ha.

0 50 100 150 200 Metres

Whittington Dean

Little Whittington

MILECASTLE 23 (remains of)

Whittington Fell

TURRET 22B (site of)

HADRIAN'S WALL (course of)

TURRET 22A (site of)

MILITARY WAY (course of)

(course of)

GATEWAY (site of)

Errington Arms (PH)

Garages

Port Gate

MILECASTLE 22 (remains of)

Rose Cottage

Pont Head Covert

Ws

FB

Path

Path

Shaft (Disused)

Shaft (Disused)

Shaft (Disused)

Mine (Disused)

River Pone

Spring

Spring

Spring

Portgate Cottage

688

650

694

693

682

709

89 A

Tk

Tk

008

005

00L

799

756W

877

860

800

# GROTTINGTON O.C.C.

ALC	Grade	Area (ha)
	3a	3.6
	3b	25.0
	4	12.1
	Urban	0.9
	<u>Total</u>	<u>41.6</u>

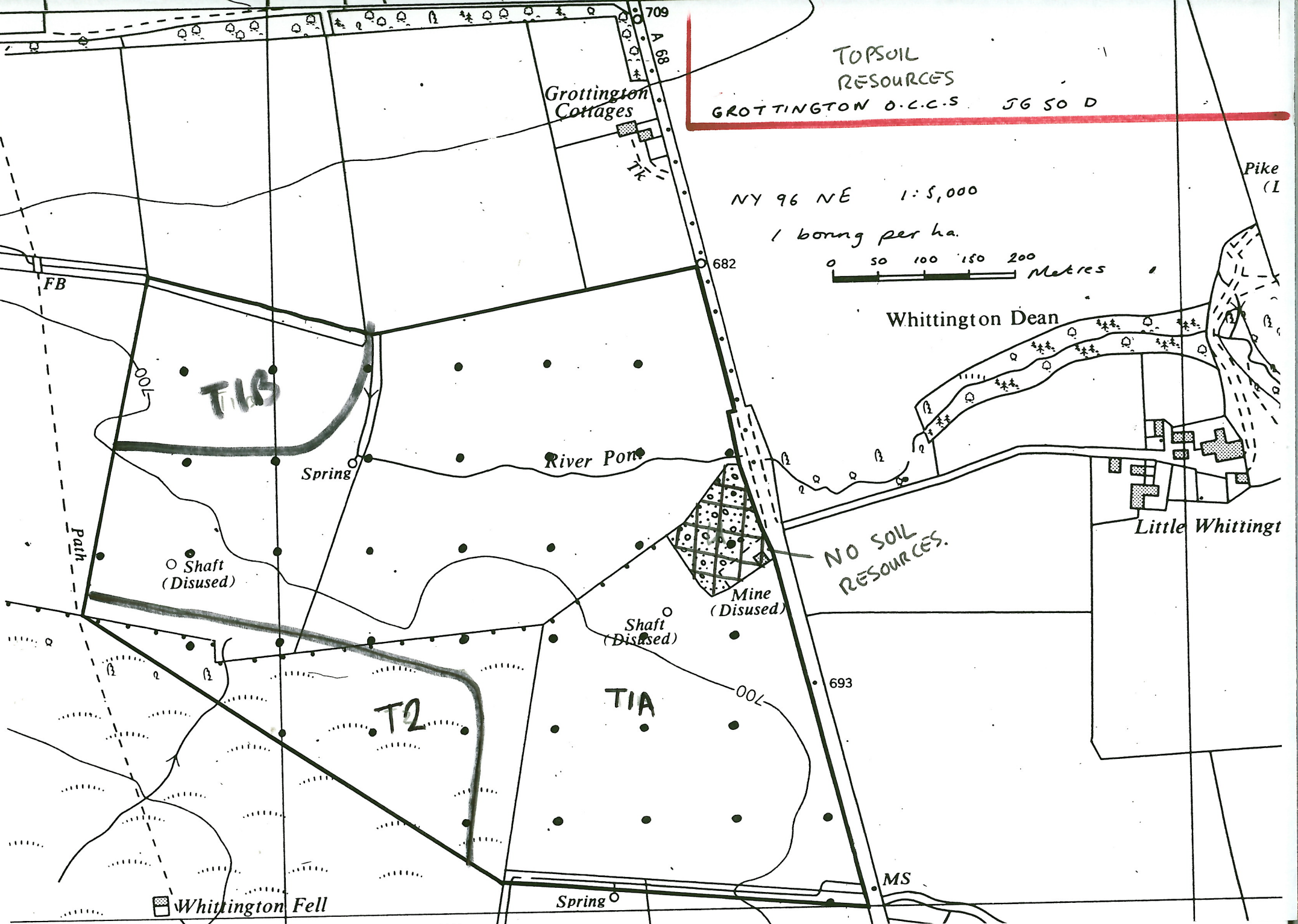
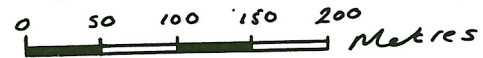
Topsoil Resources	Mean Depth cm	Texture	Area (ha)	Vol $000 m^3$
T1 A	25	Medium	31.6	79.0
B	25	Light	3.9	9.75
T2	25	Light <del>and</del> (organic)	5.2	13.0
(No Soil Resources)	N/A	N/A	0.9	—
			<u>41.6</u>	

Subsoil Resources	Mean Thickness	Texture	Area ha	Volume $000 m^3$
S1A	75	Med / Heavy	31.6	237
B	75	Light	3.9	29.25
S2	20	Light	5.2	10.4
(No soil resources)	N/A	N/A	0.9	—
			<u>41.6</u>	

TOPSOIL  
RESOURCES  
GROTTINGTON O.C.C.S. JG 50 D

NY 96 NE 1:5,000

1 boring per ha.



Pike (L)

Whittington Dean

Little Whittington

NO SOIL  
RESOURCES.

Grottington  
Cottages

○ Shaft  
(Disused)

○ Shaft  
(Disused)

Mine  
(Disused)

Whittington Fell

Spring

MS

FB

709  
A 58

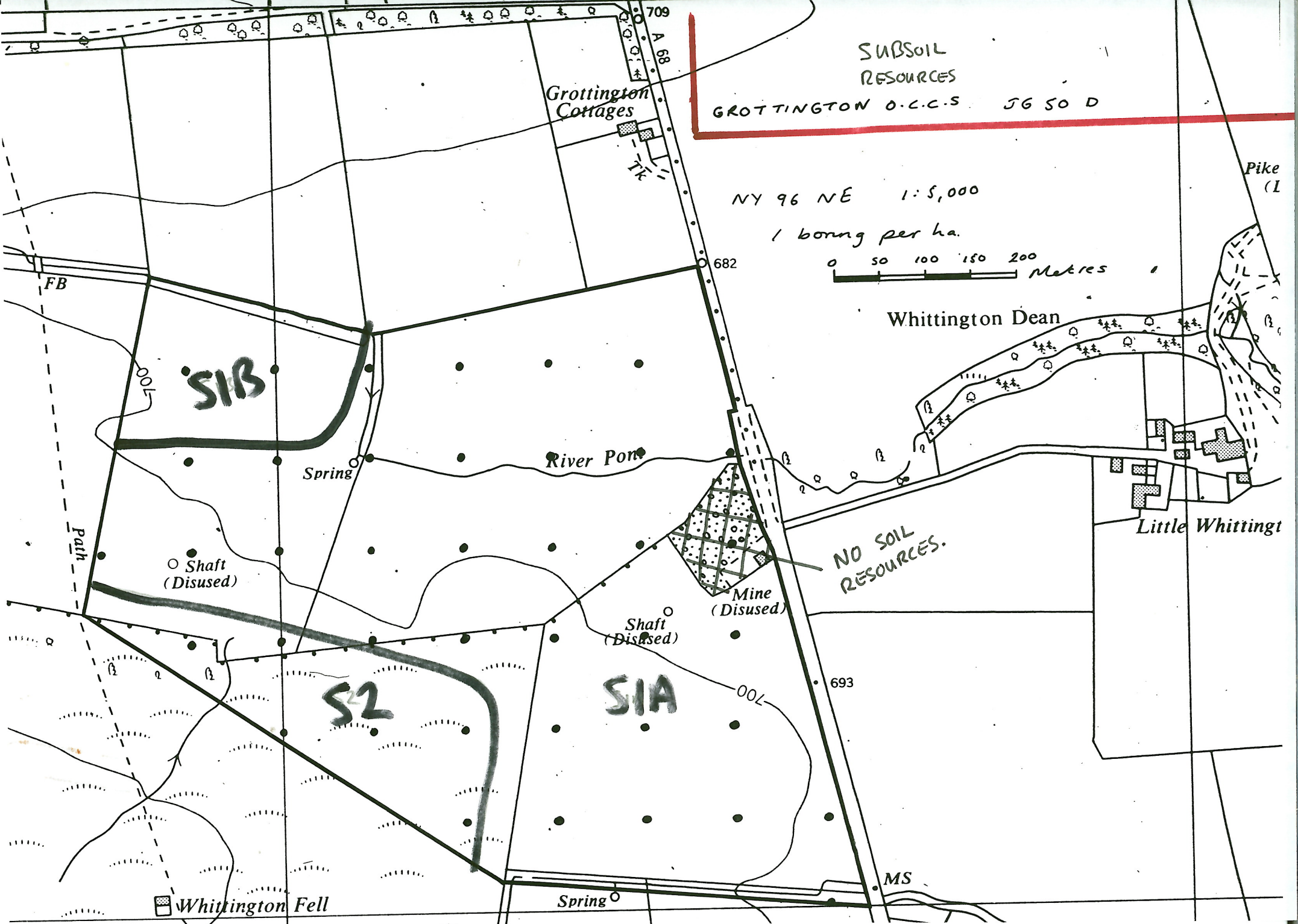
682

693

SUBSOIL  
RESOURCES  
GROTTINGTON O.C.C.S. JG 50 D

NY 96 NE 1:5,000

1 boring per ha.



Whittington Dean

Grottington Cottages

S1B

Spring

River Pout

○ Shaft (Disused)

Mine (Disused)

○ Shaft (Disused)

NO SOIL RESOURCES.

Little Whittington

S2

S1A

693

Whittington Fell

Spring

MS

Pike (L)