

Waterbird population trend analysis of the Mersey Estuary SPA, Mersey Narrows & North Wirral Foreshore pSPA and Ribble & Alt Estuaries SPA

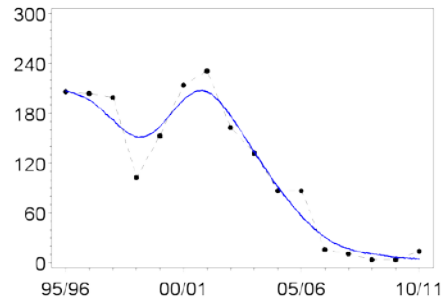
Annex A - Population trends of each species on each SPA and a comparison of each relative to the broader region (North West England)

First published 27 May 2015

Bewick's Swan

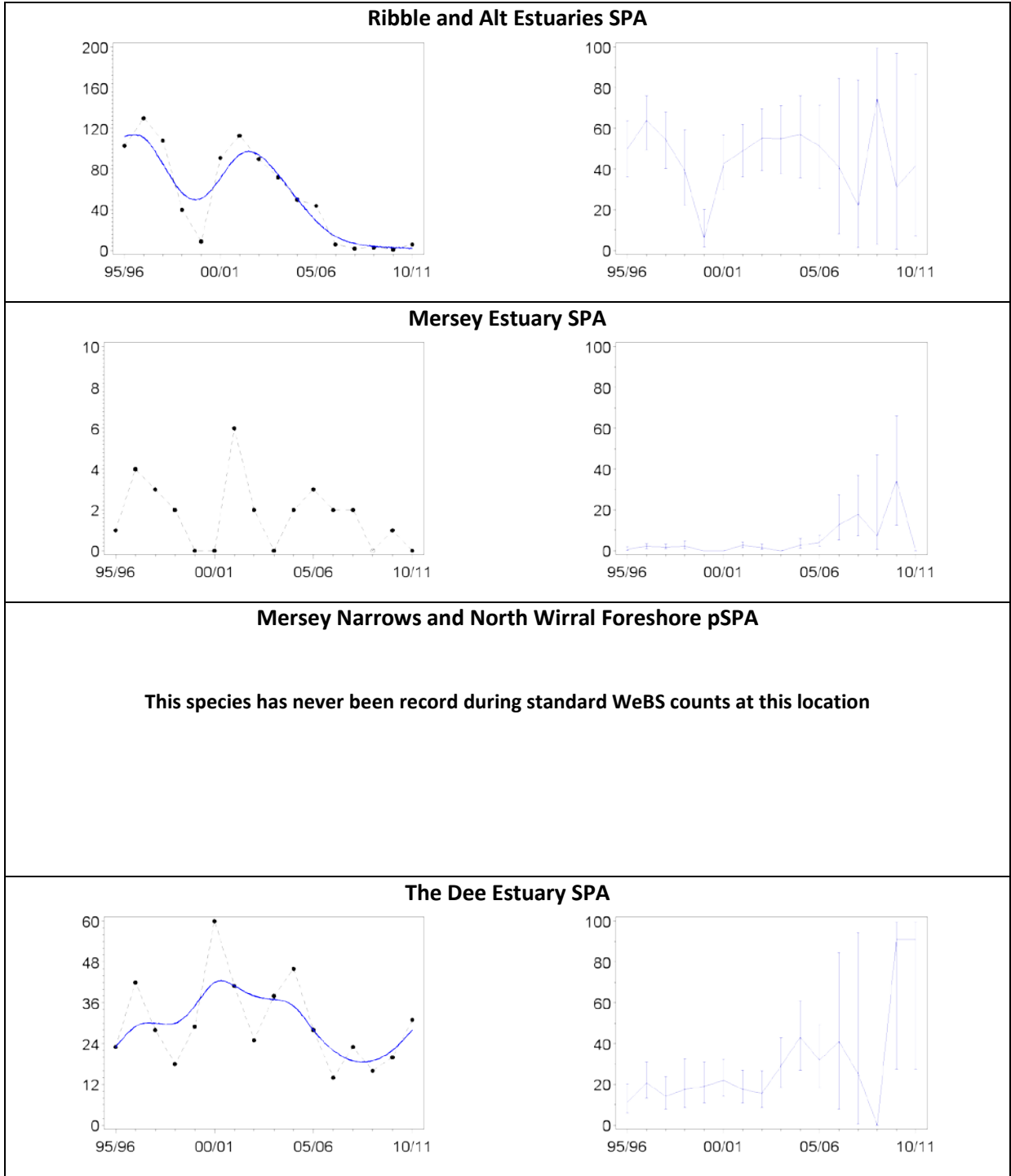


Regional trend (North West England)



Site Trend

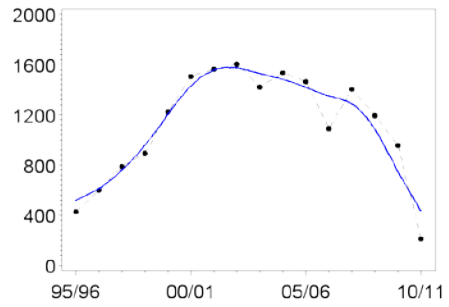
Site trend relative to regional trend



Whooper Swan

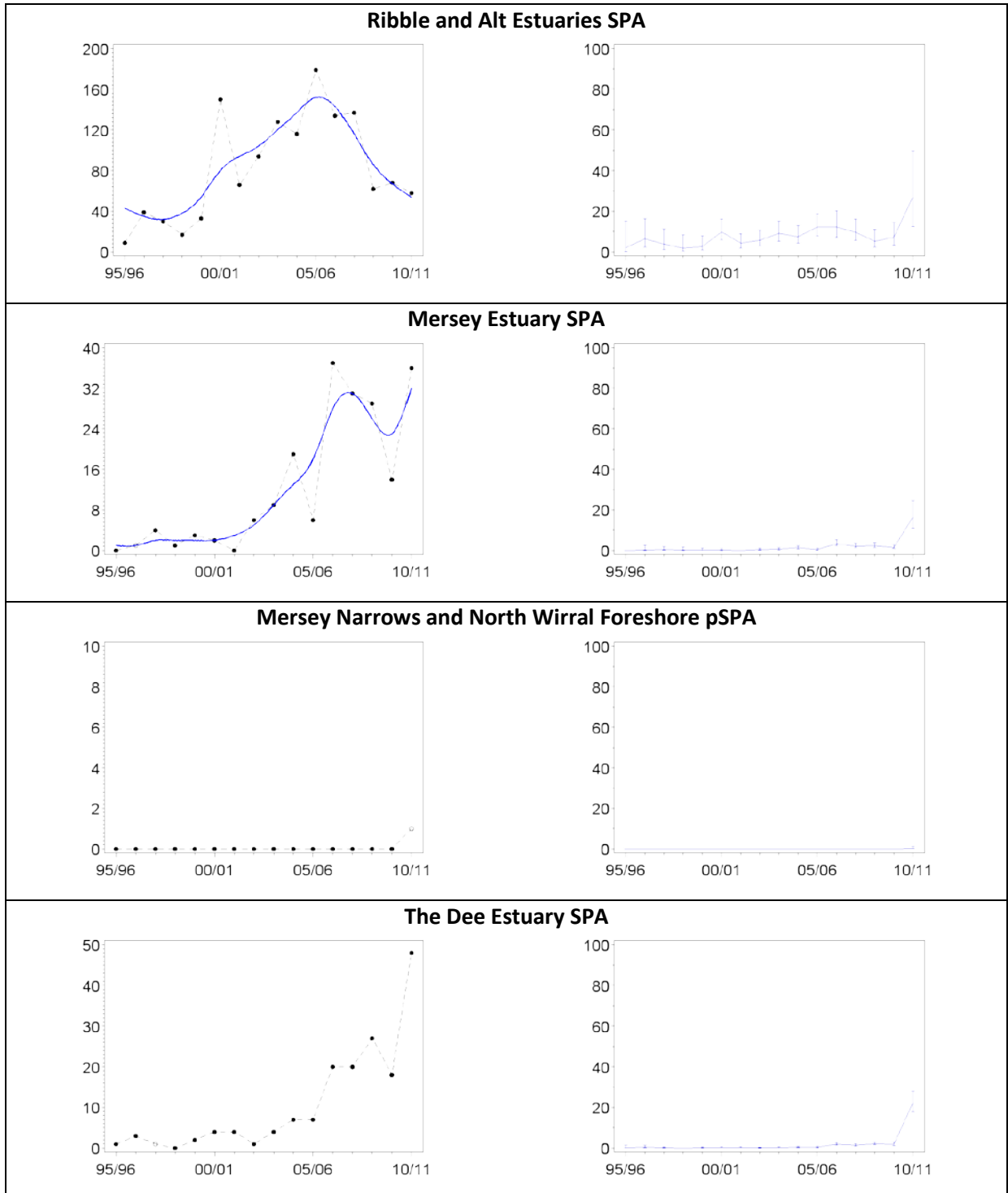


Regional trend (North West England)



Site Trend

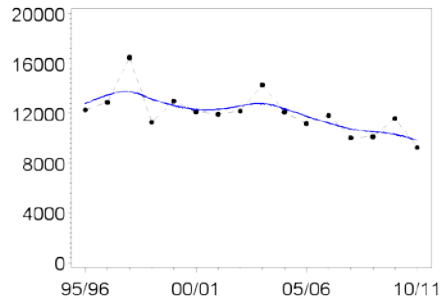
Site trend relative to regional trend



Shelduck

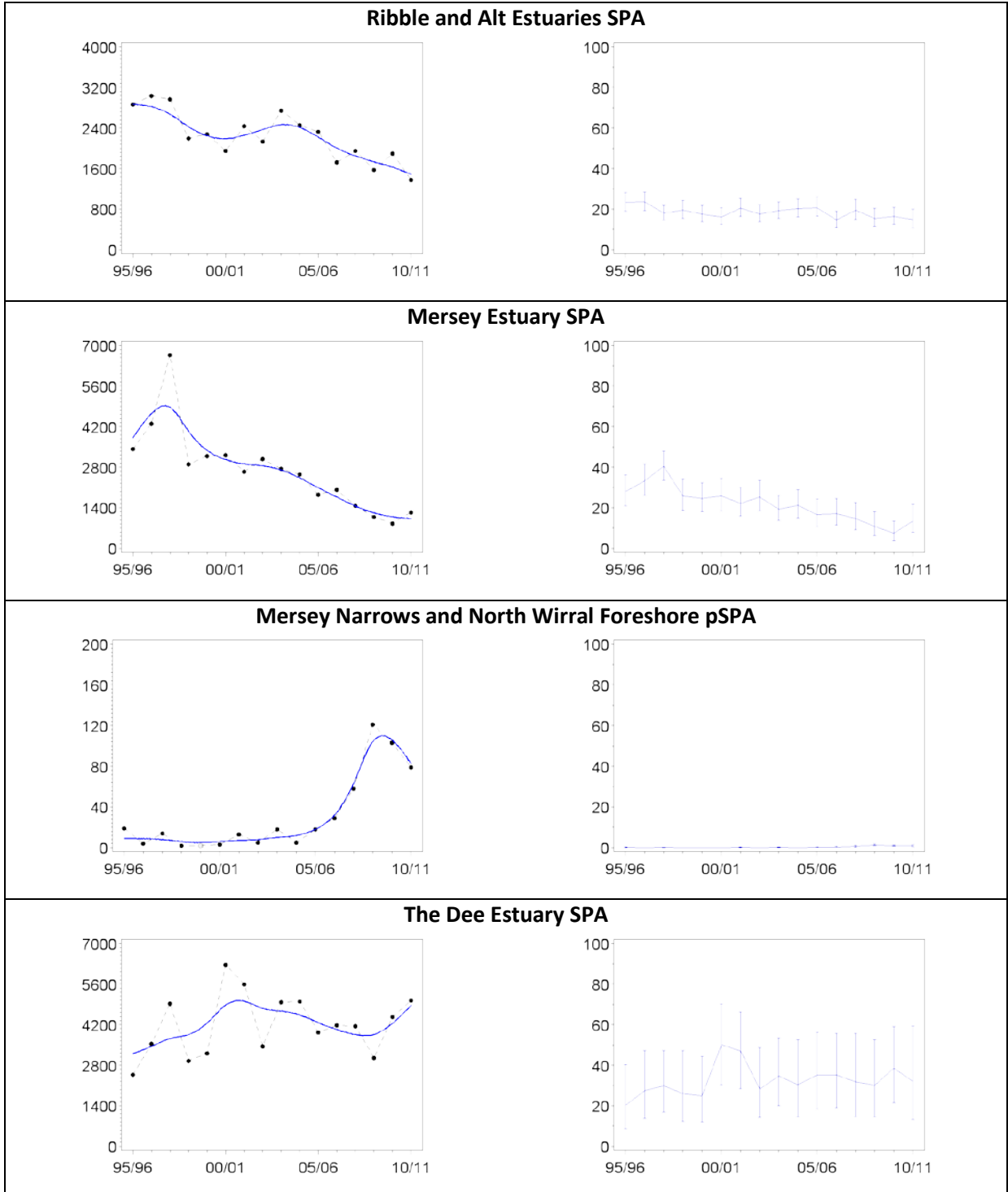


Regional trend (North West England)



Site Trend

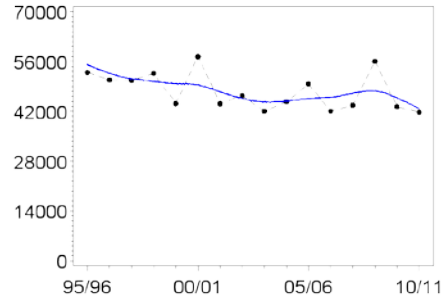
Site trend relative to regional trend



Wigeon

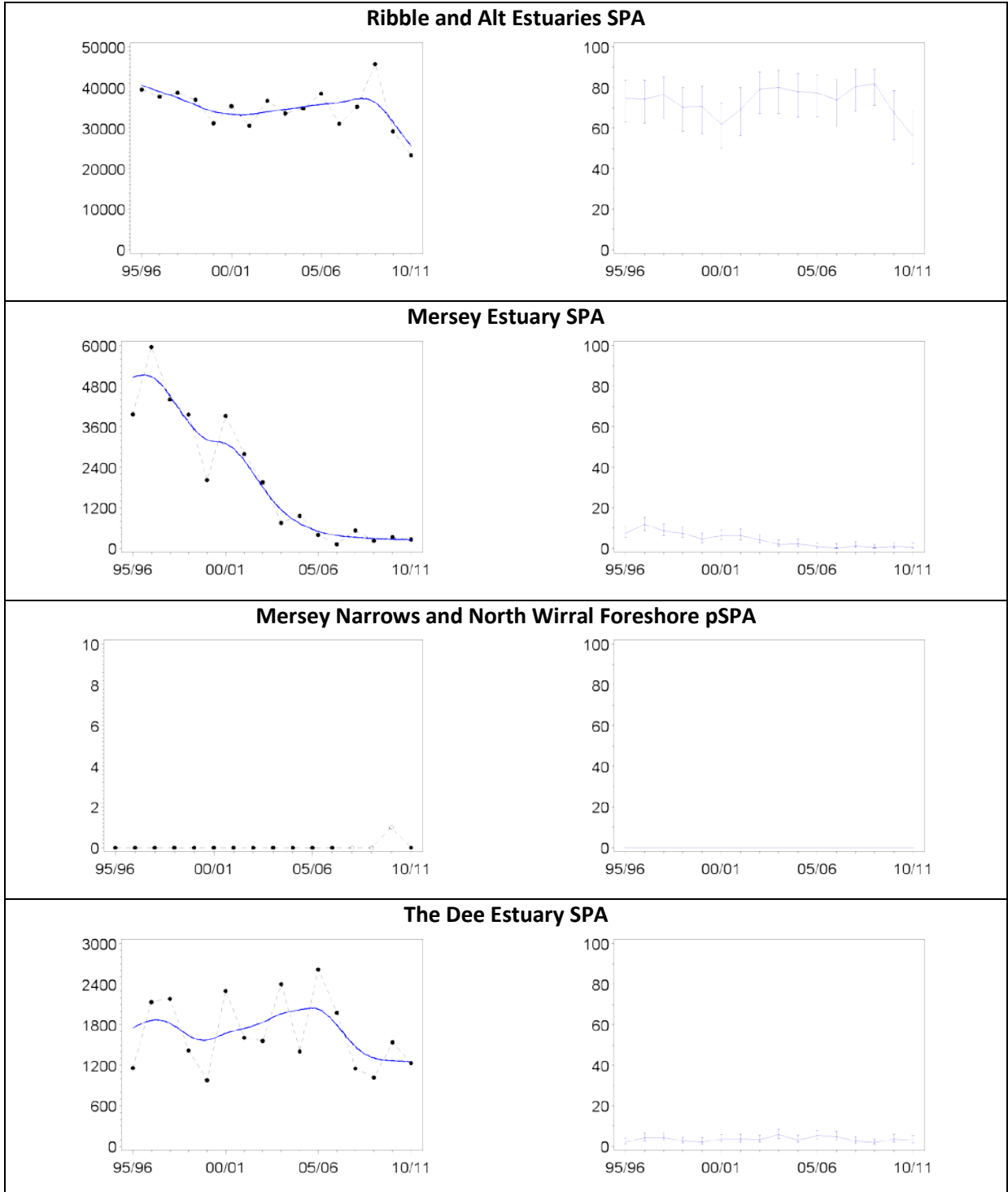


Regional trend (North West England)



Site Trend

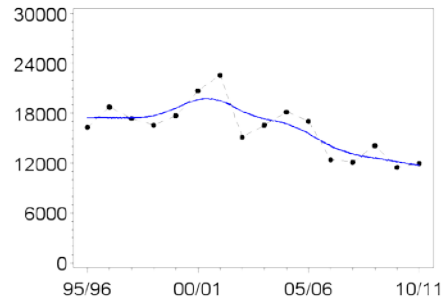
Site trend relative to regional trend



Teal

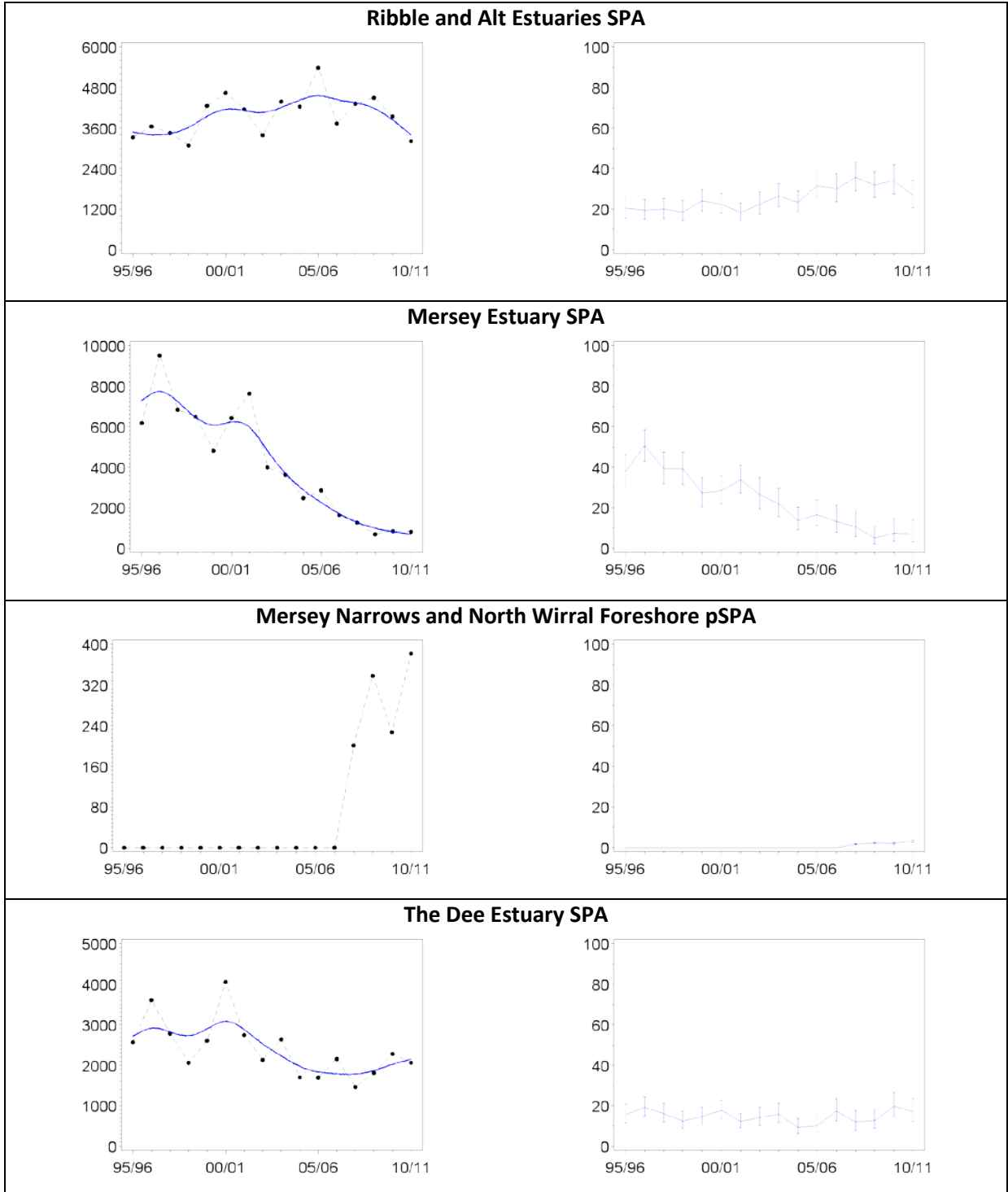


Regional trend (North West England)

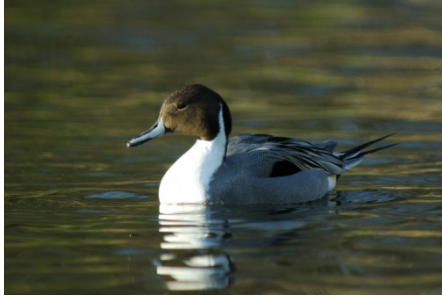


Site Trend

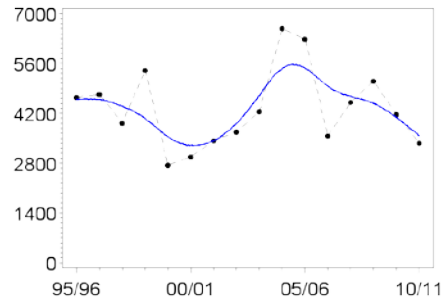
Site trend relative to regional trend



Pintail

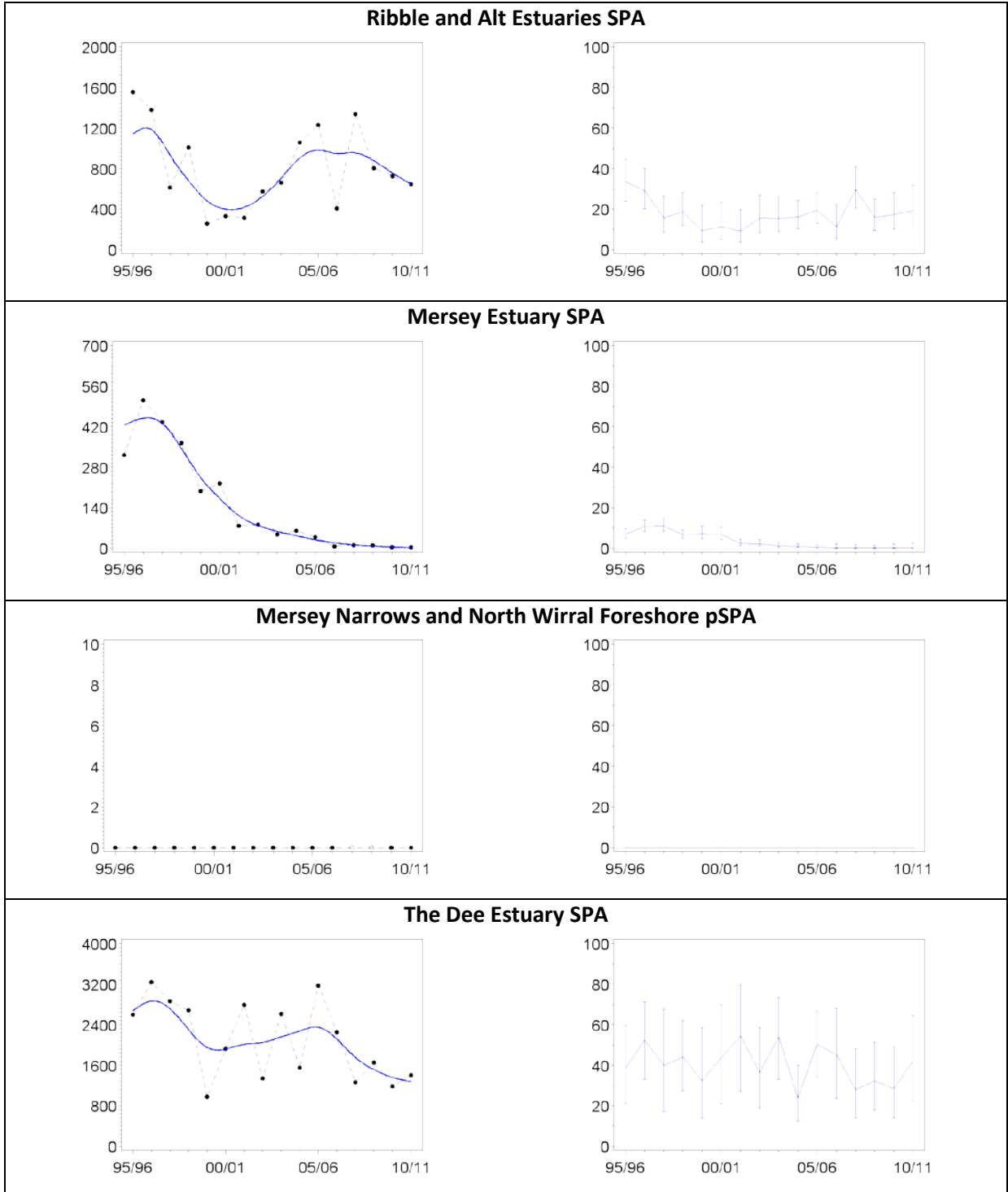


Regional trend (North West England)

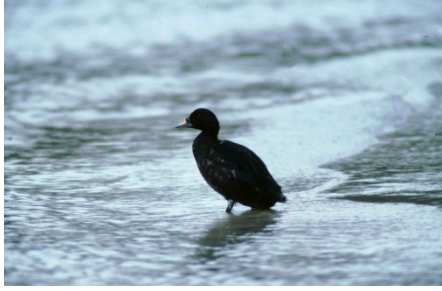


Site Trend

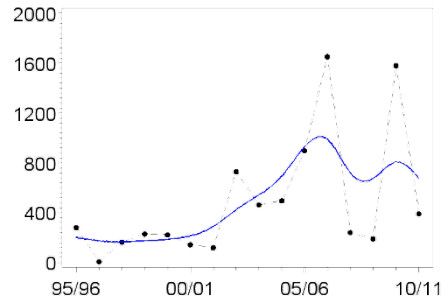
Site trend relative to regional trend



Common Scoter

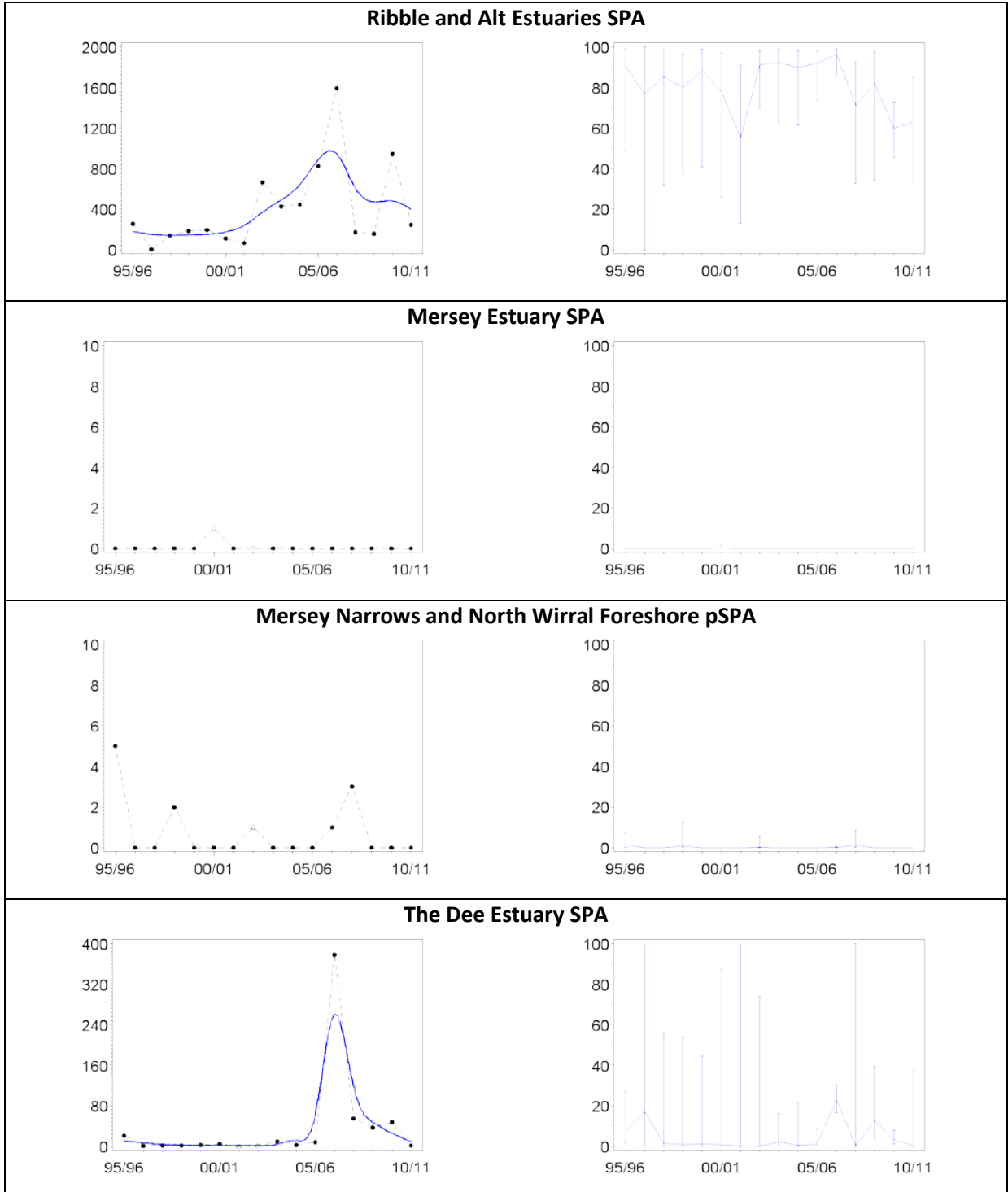


Regional trend (North West England)



Site Trend

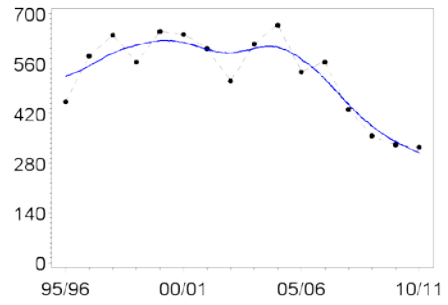
Site trend relative to regional trend



Great Crested Grebe

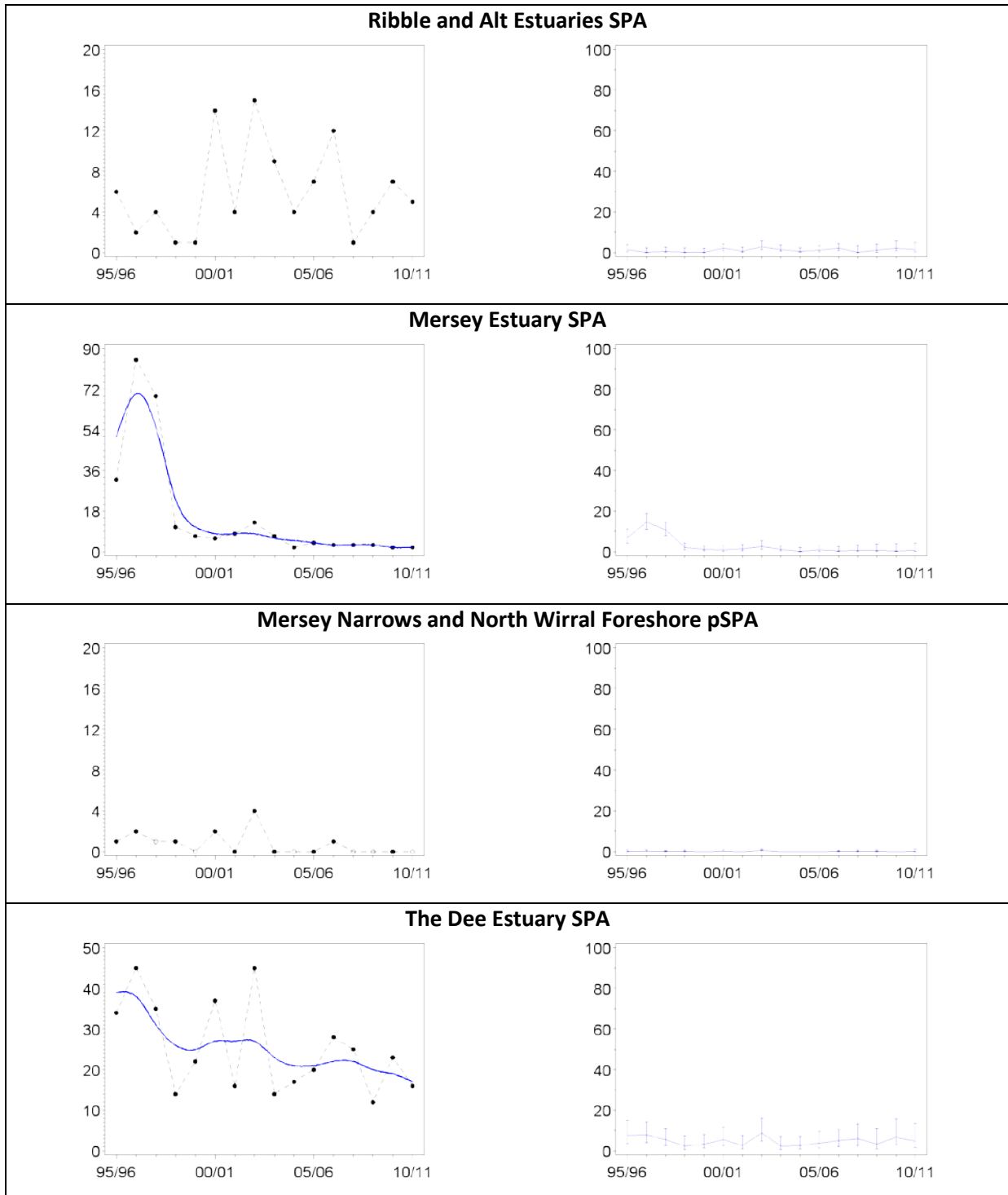


Regional trend (North West England)



Site Trend

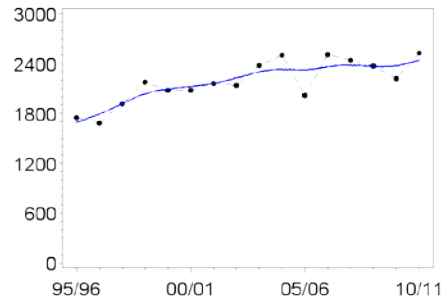
Site trend relative to regional trend



Cormorant

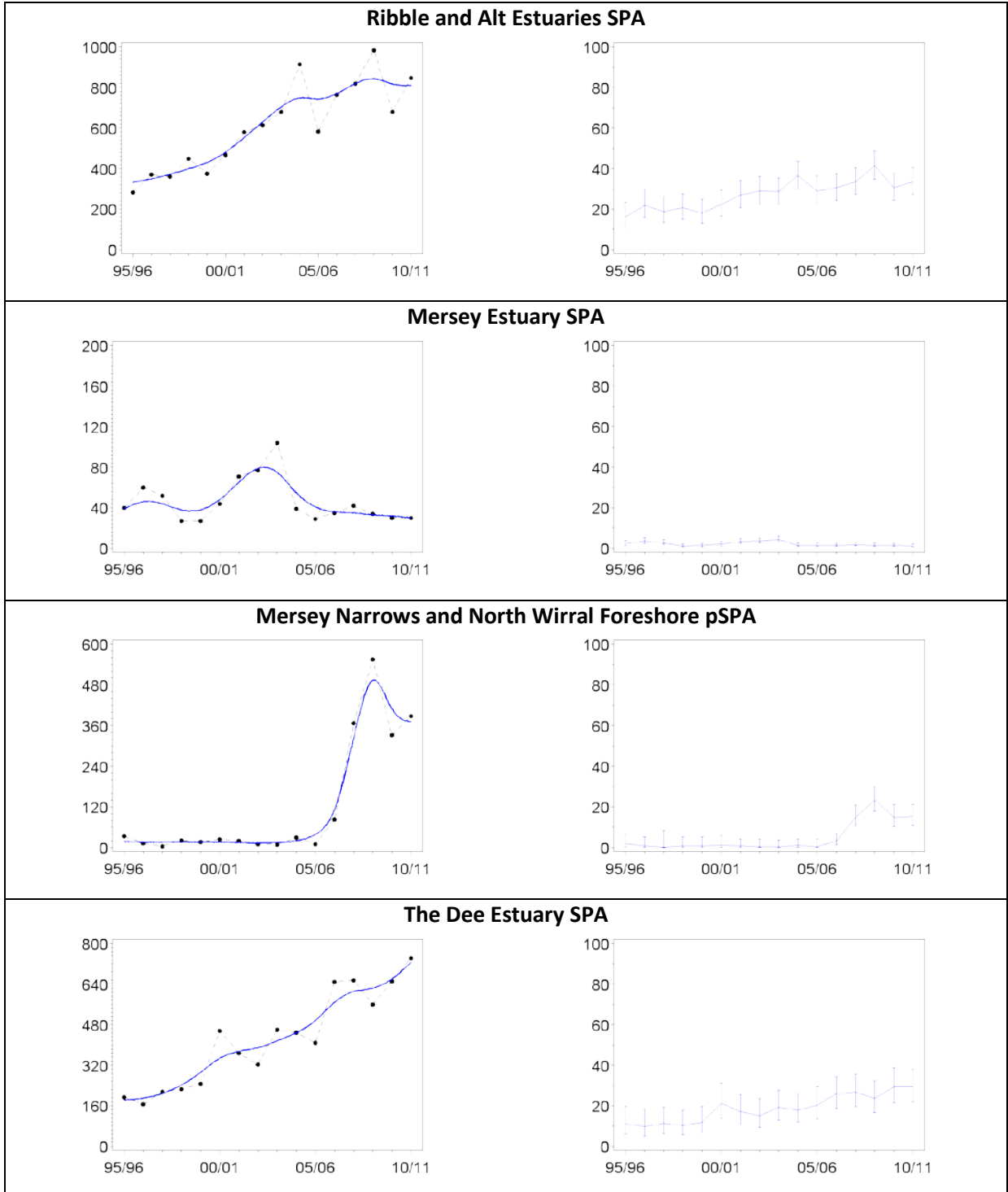


Regional trend (North West England)



Site Trend

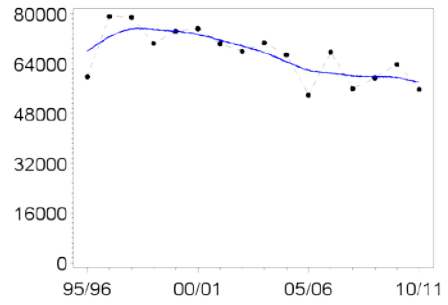
Site trend relative to regional trend



Oystercatcher

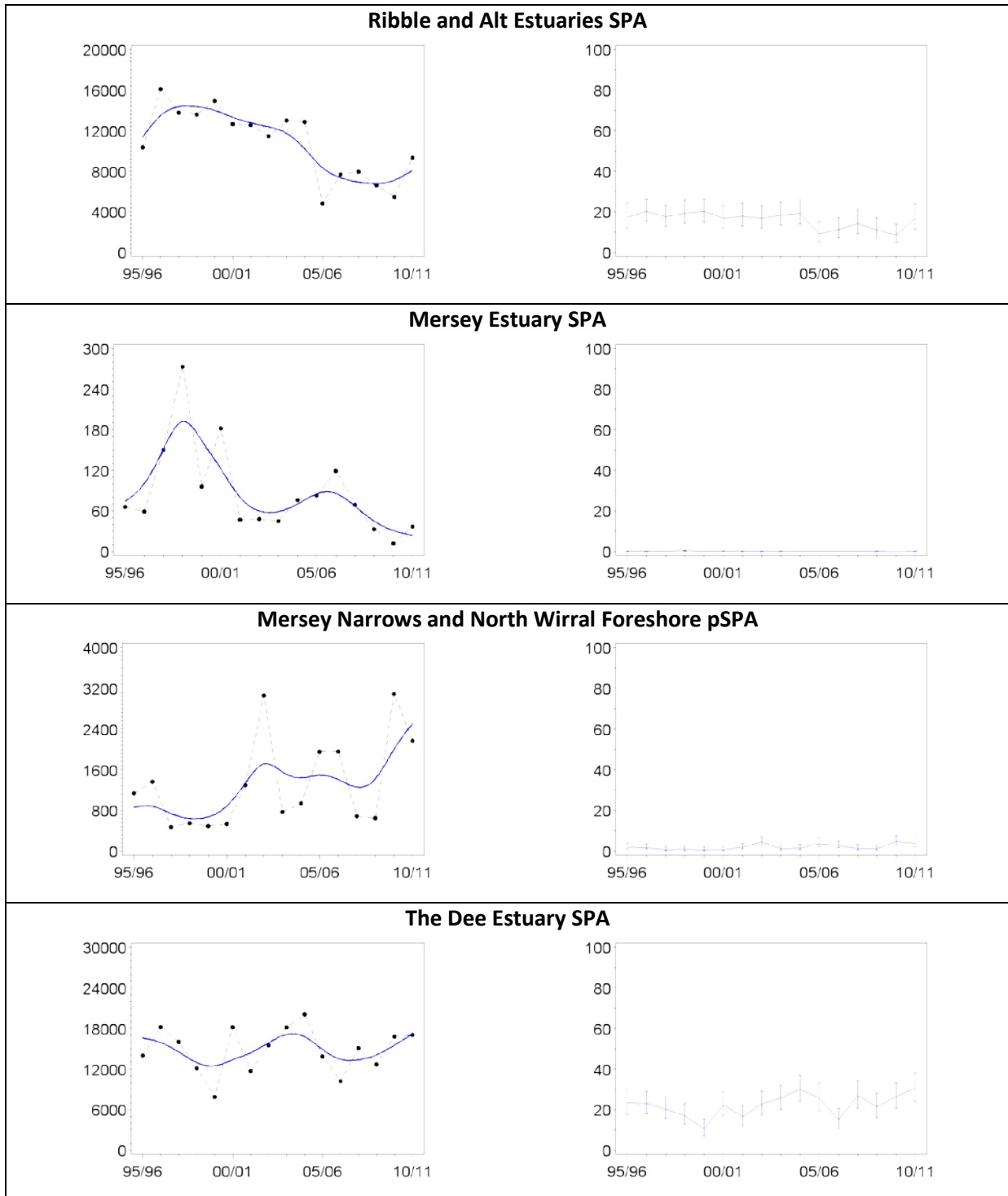


Regional trend (North West England)



Site Trend

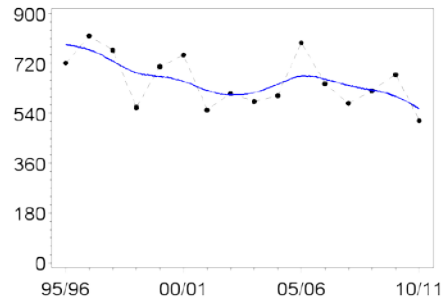
Site trend relative to regional trend



Ringed Plover

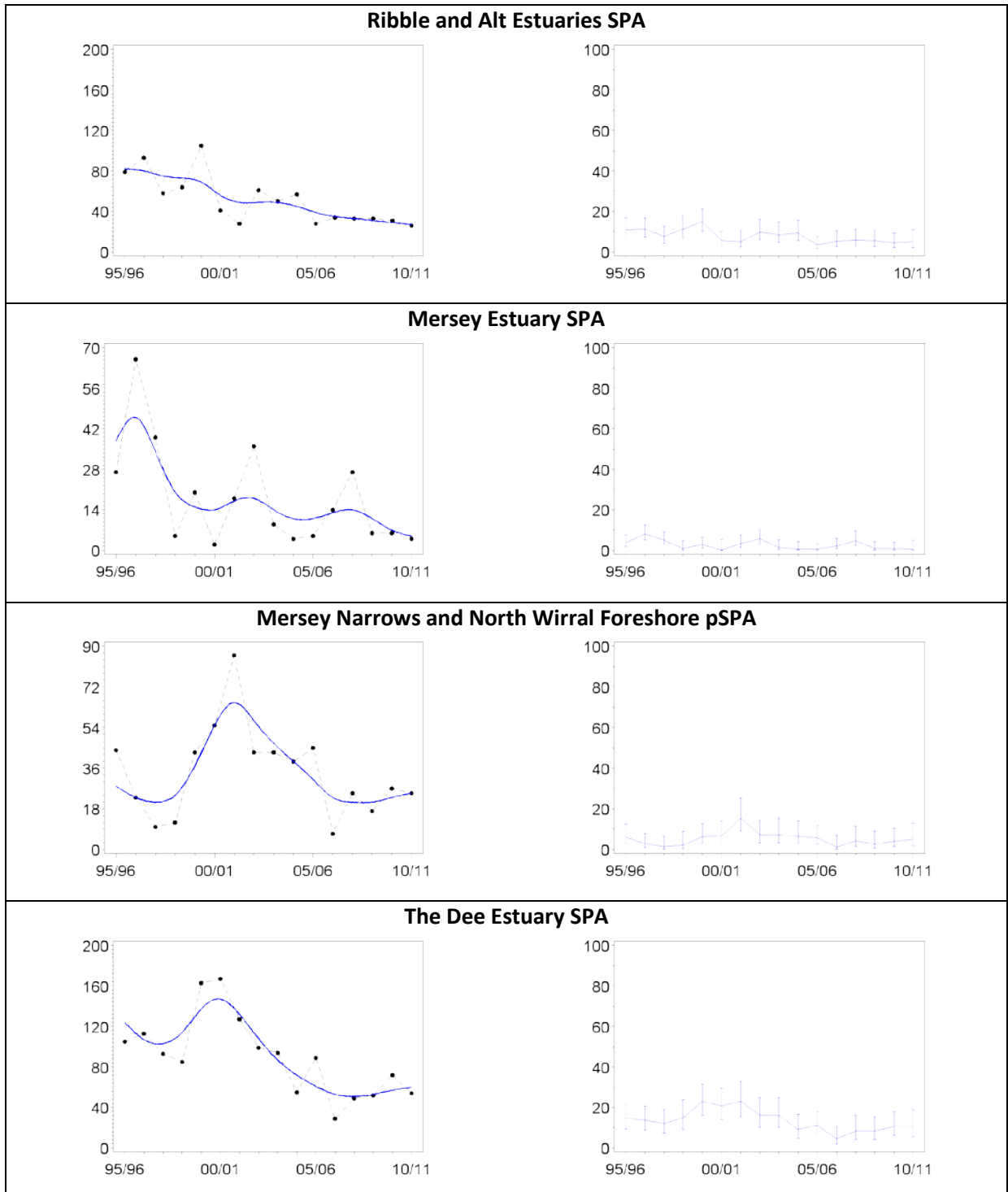


Regional trend (North West England)



Site Trend

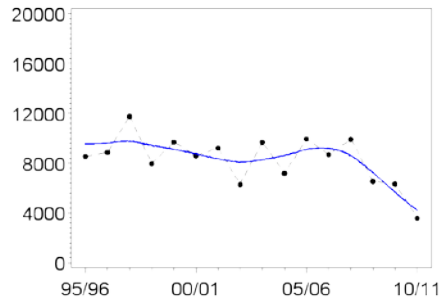
Site trend relative to regional trend



Golden Plover

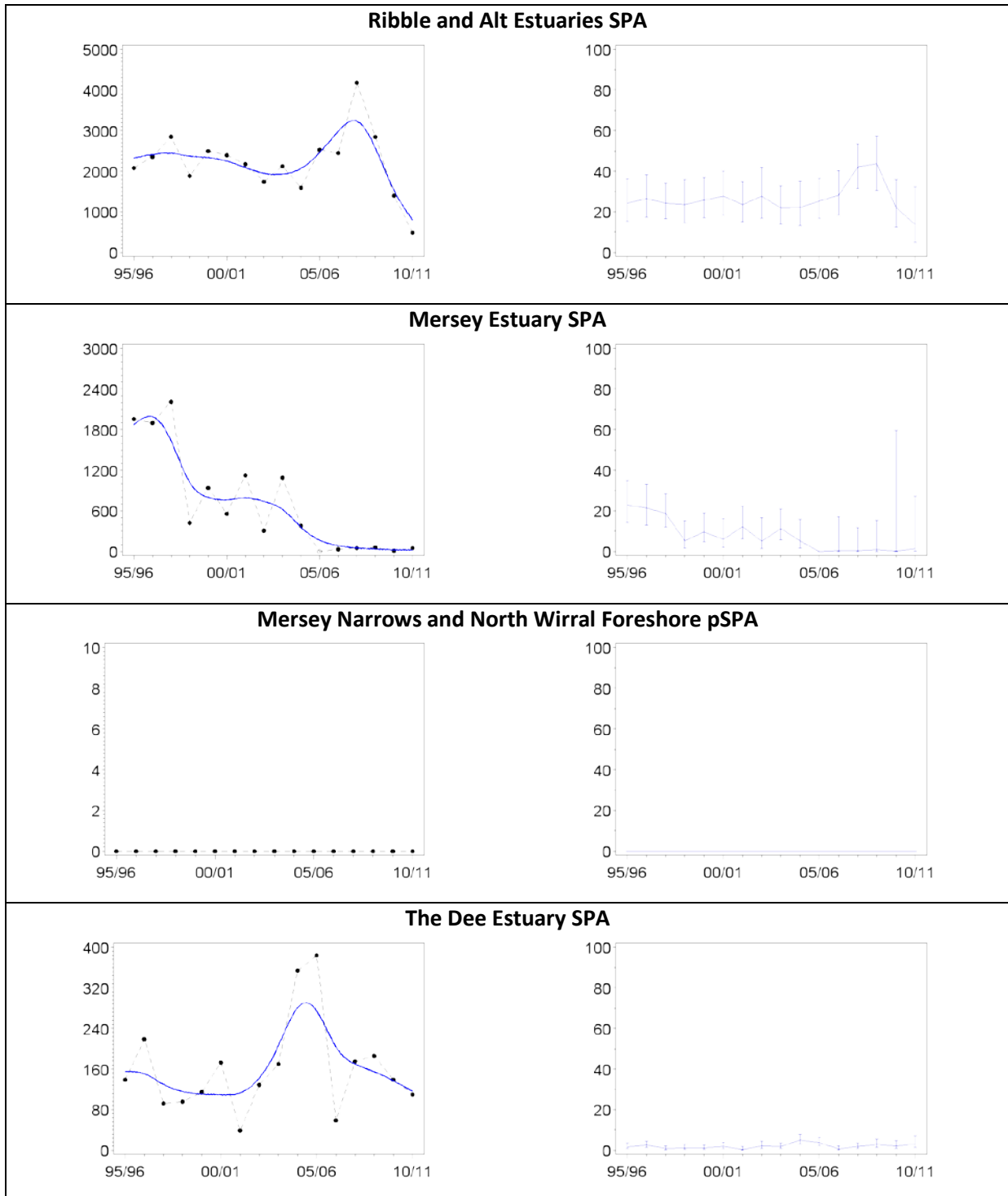


Regional trend (North West England)



Site Trend

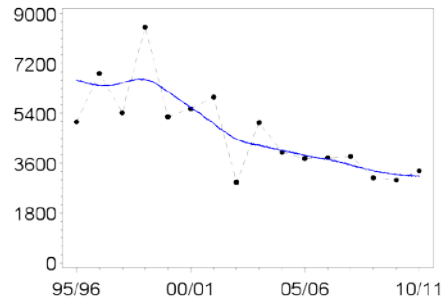
Site trend relative to regional trend



Grey Plover

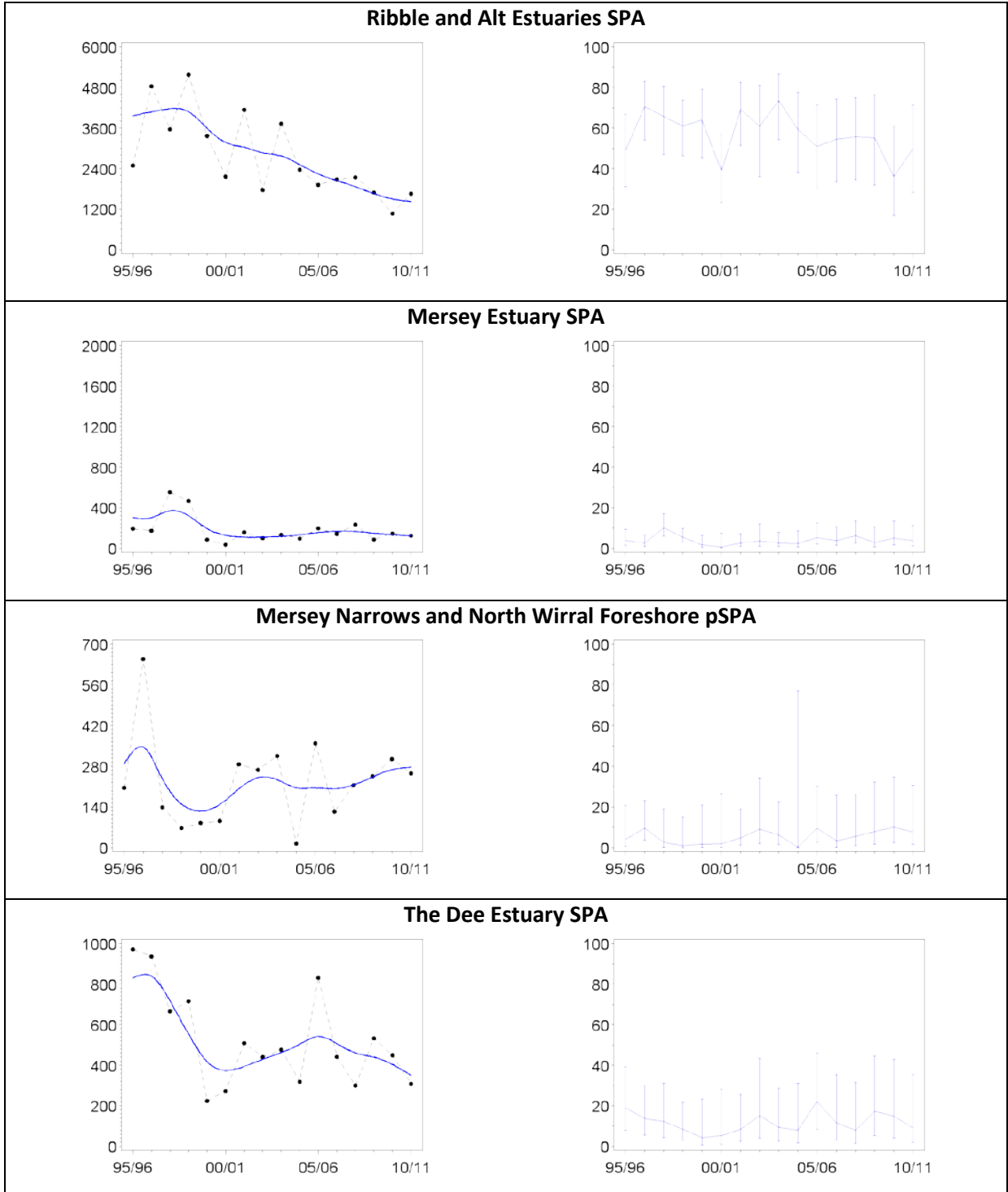


Regional trend (North West England)



Site Trend

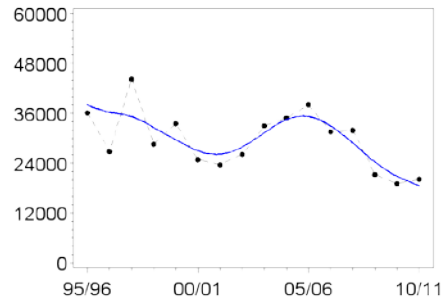
Site trend relative to regional trend



Lapwing

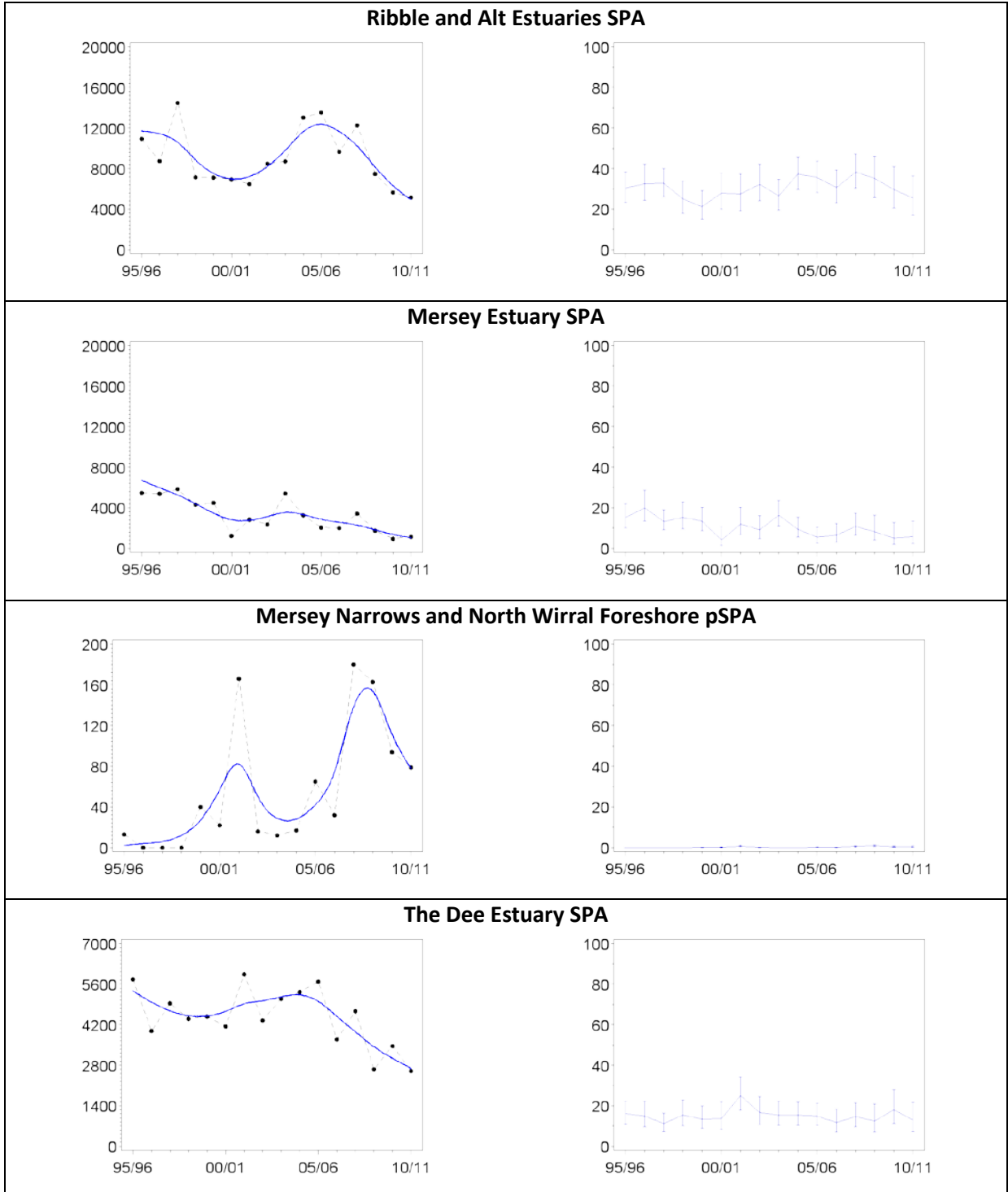


Regional trend (North West England)



Site Trend

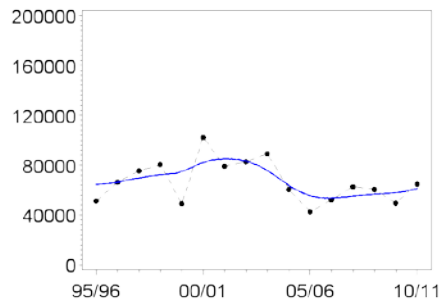
Site trend relative to regional trend



Knot

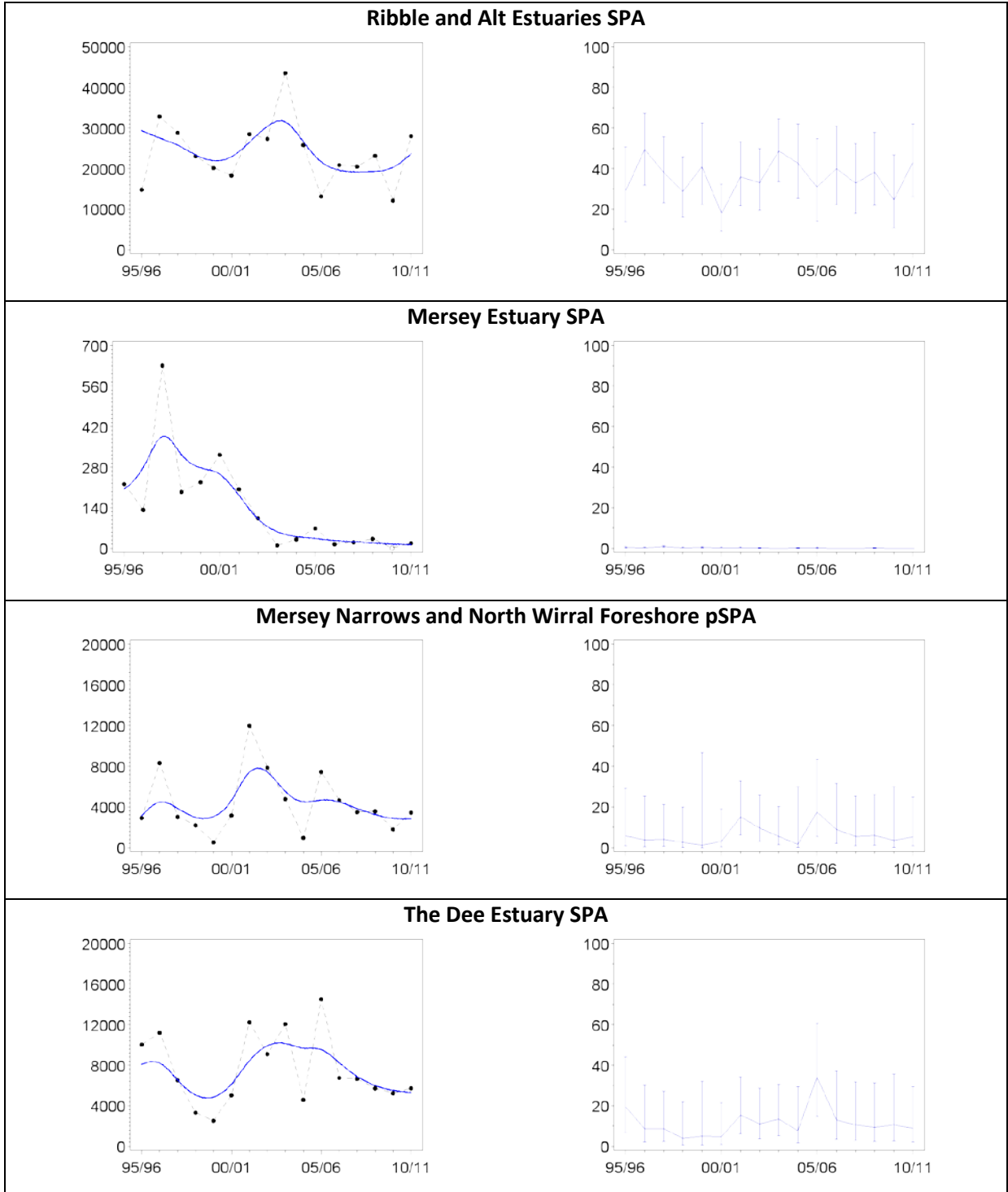


Regional trend (North West England)



Site Trend

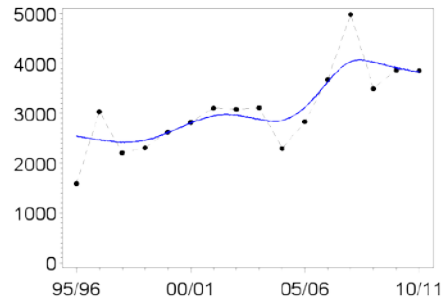
Site trend relative to regional trend



Sanderling

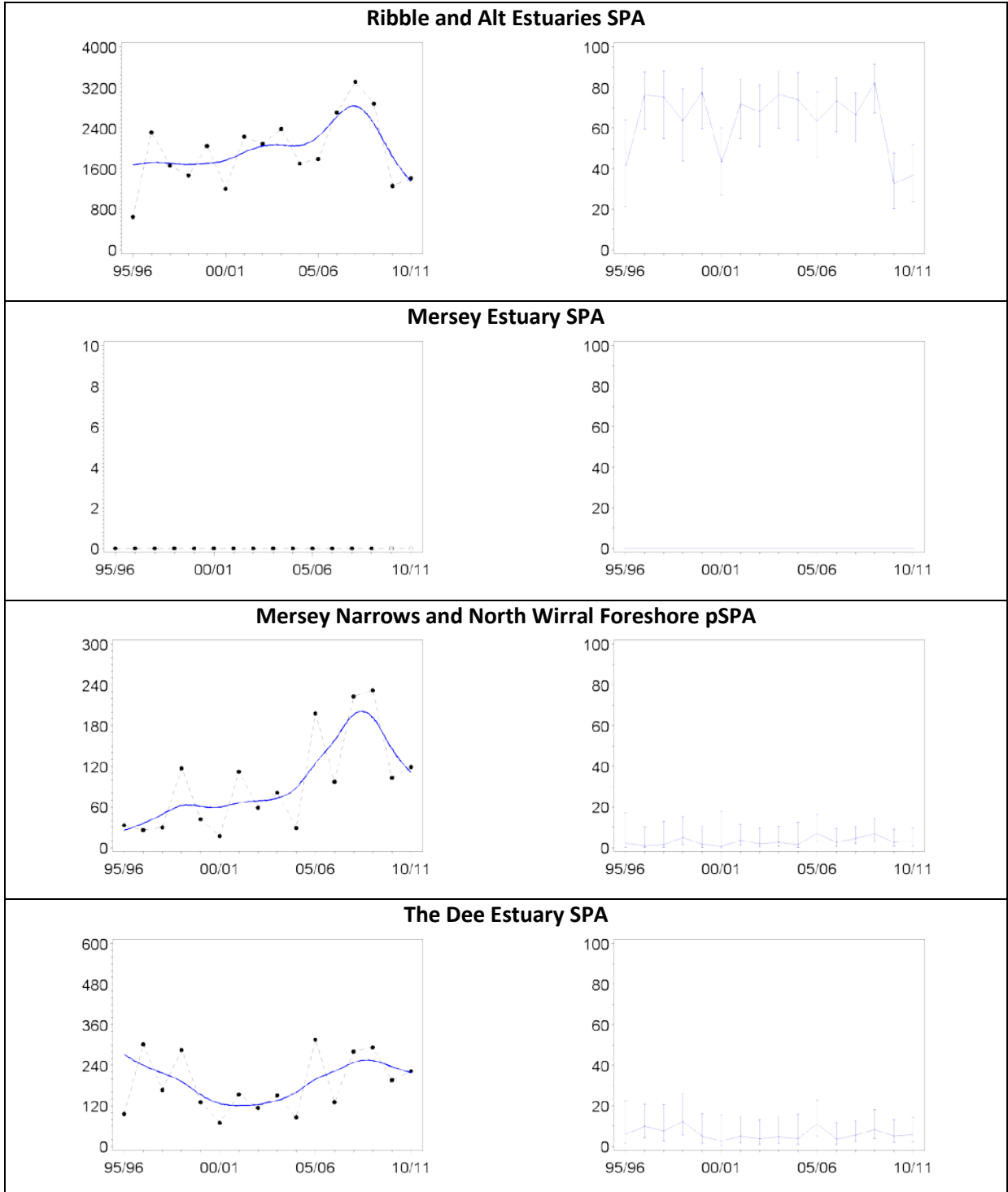


Regional trend (North West England)



Site Trend

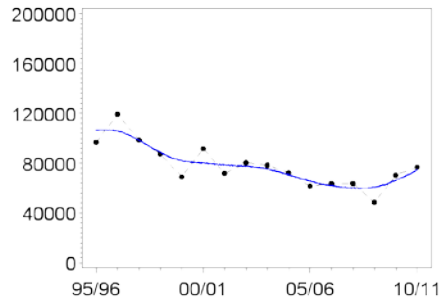
Site trend relative to regional trend



Dunlin

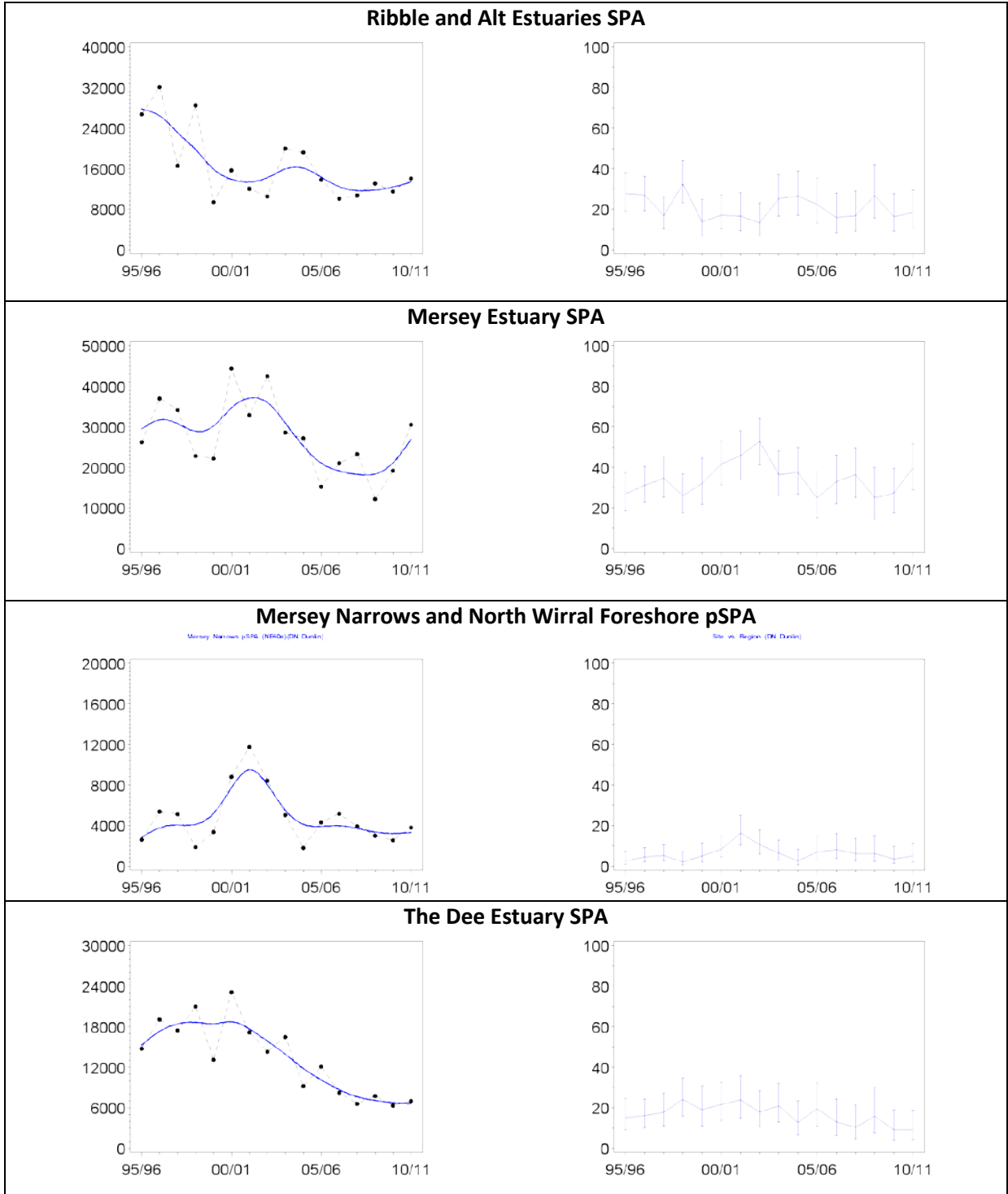


Regional trend (North West England)



Site Trend

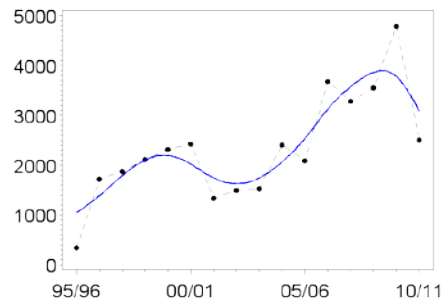
Site trend relative to regional trend



Black-tailed Godwit

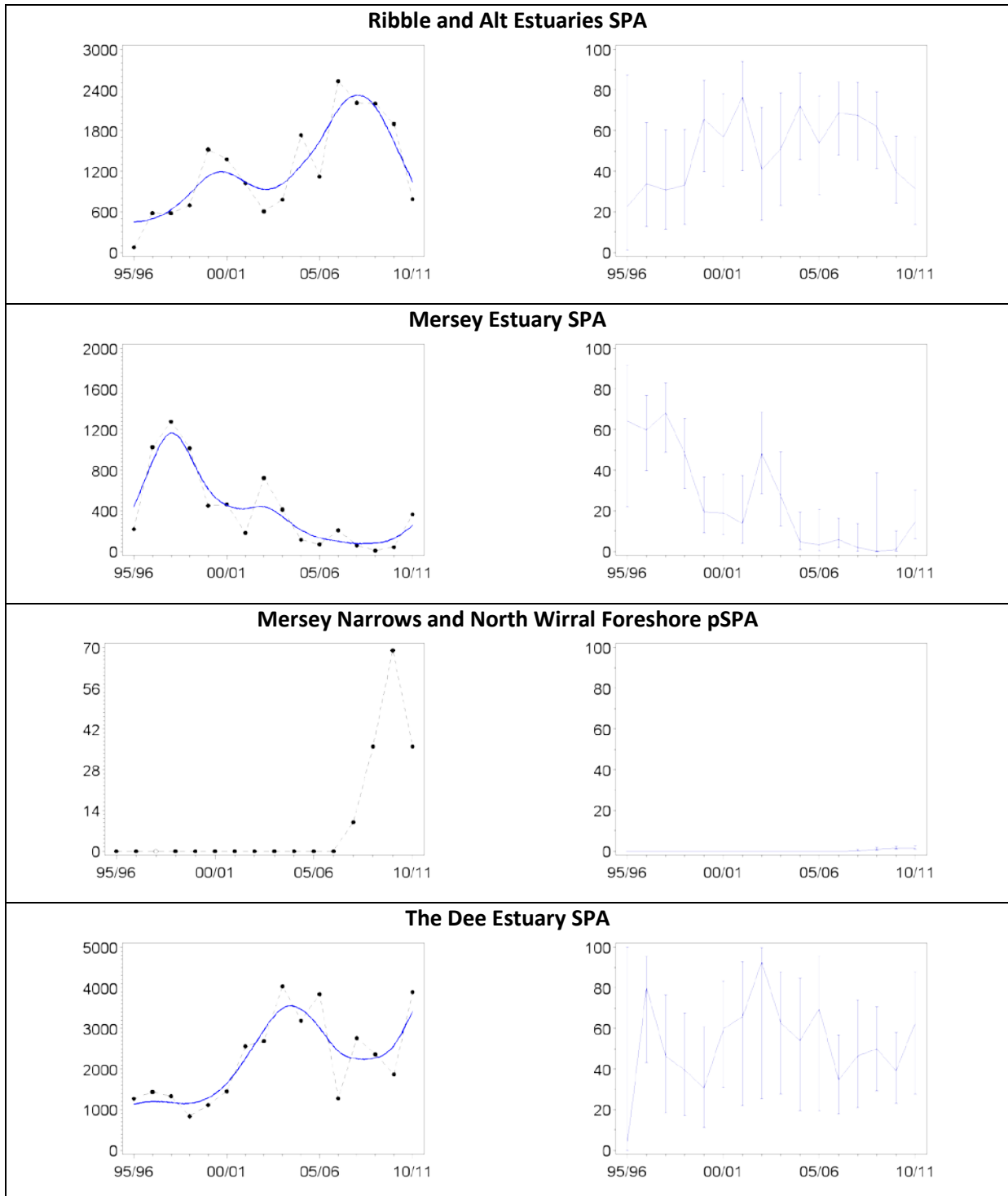


Regional trend (North West England)



Site Trend

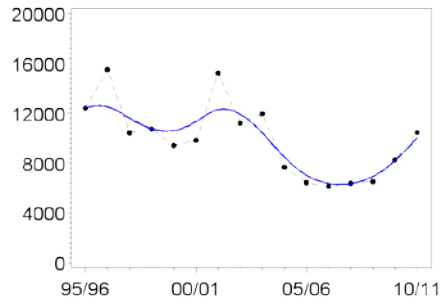
Site trend relative to regional trend



Bar-tailed Godwit

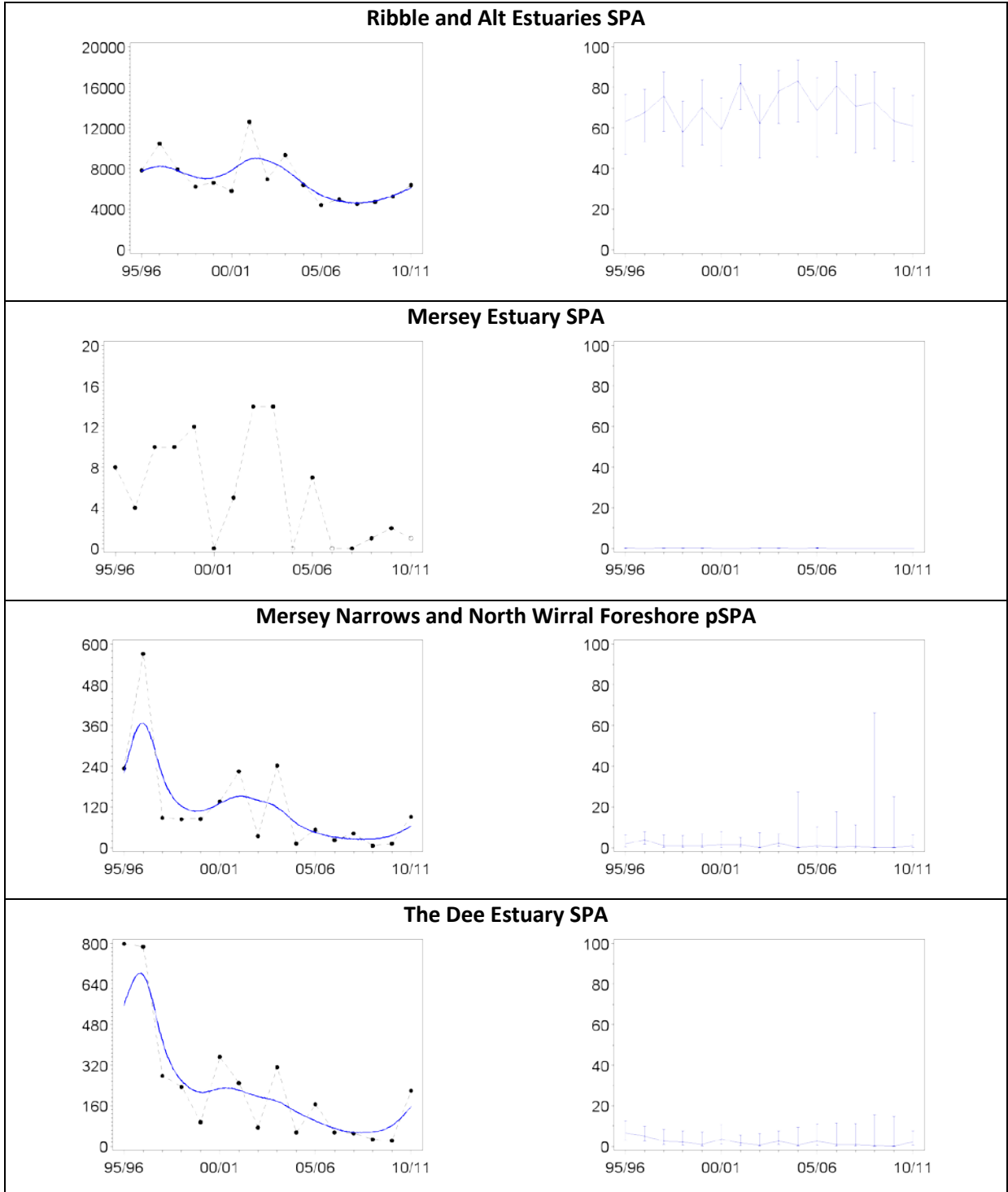


Regional trend (North West England)



Site Trend

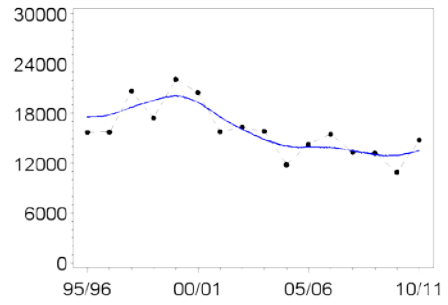
Site trend relative to regional trend



Curlew

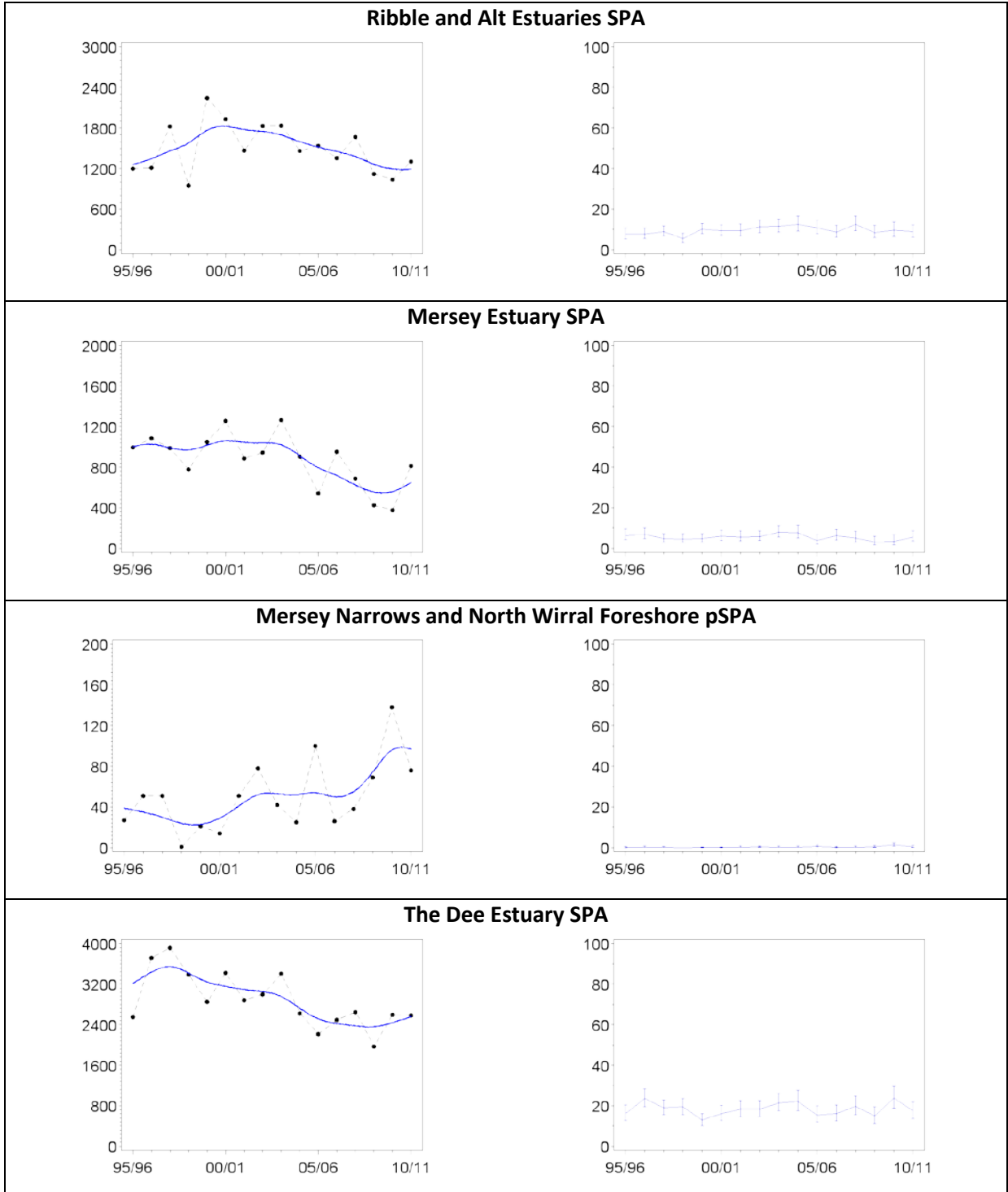


Regional trend (North West England)



Site Trend

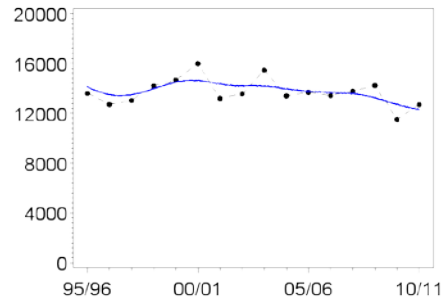
Site trend relative to regional trend



Redshank

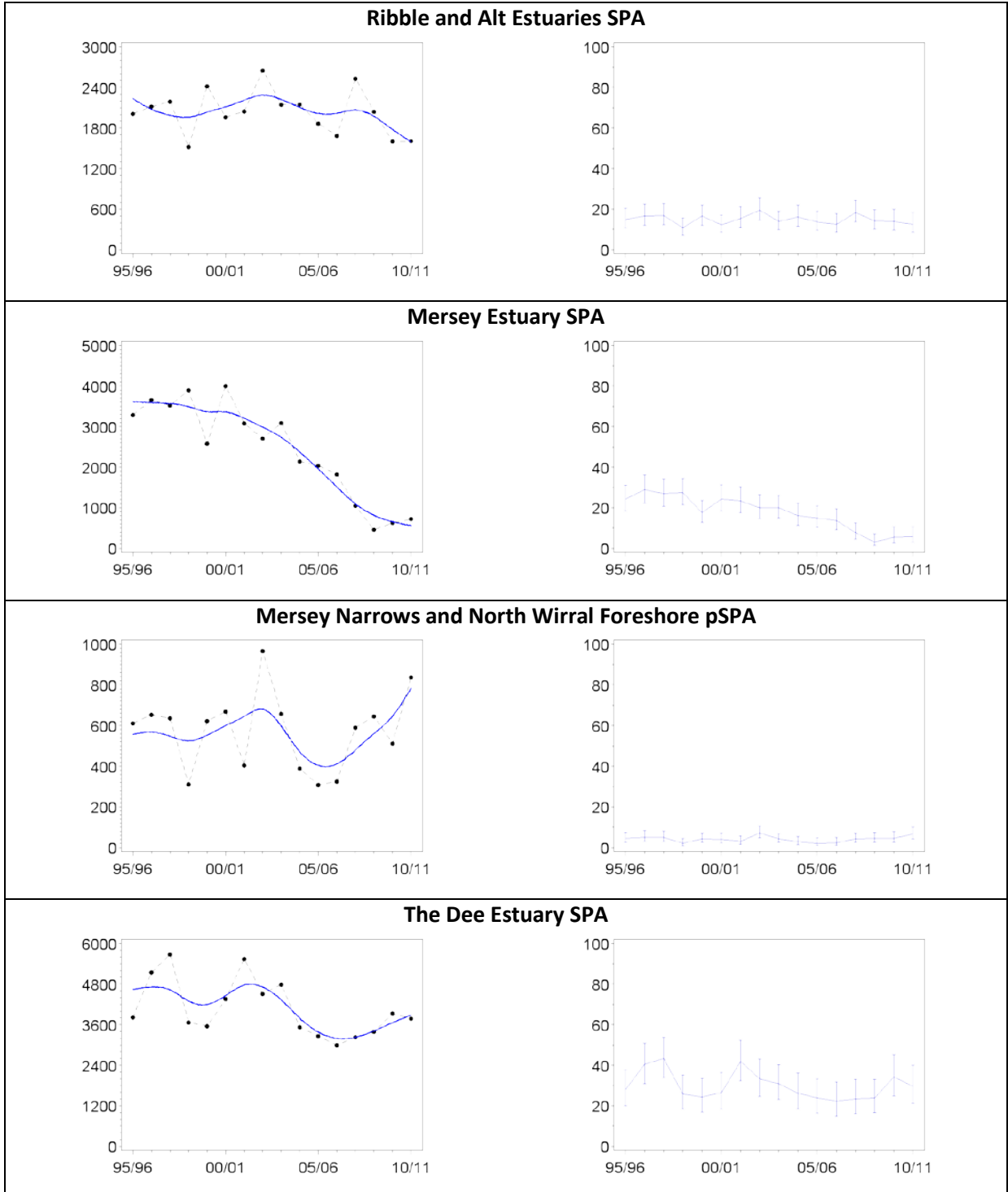


Regional trend (North West England)



Site Trend

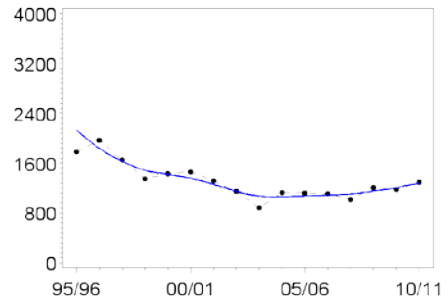
Site trend relative to regional trend



Turnstone



Regional trend (North West England)



Site Trend

Site trend relative to regional trend

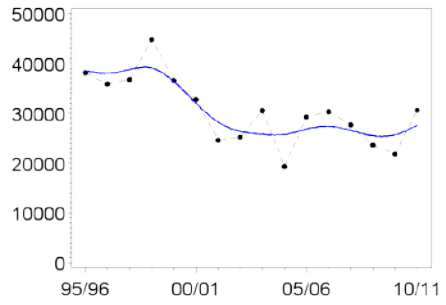


Black-headed Gull

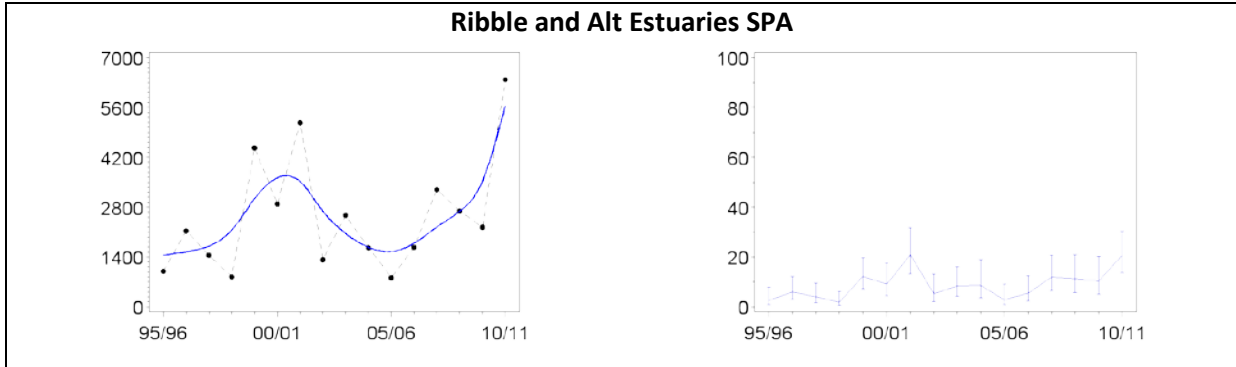


Site Trend

Regional trend (North West England)

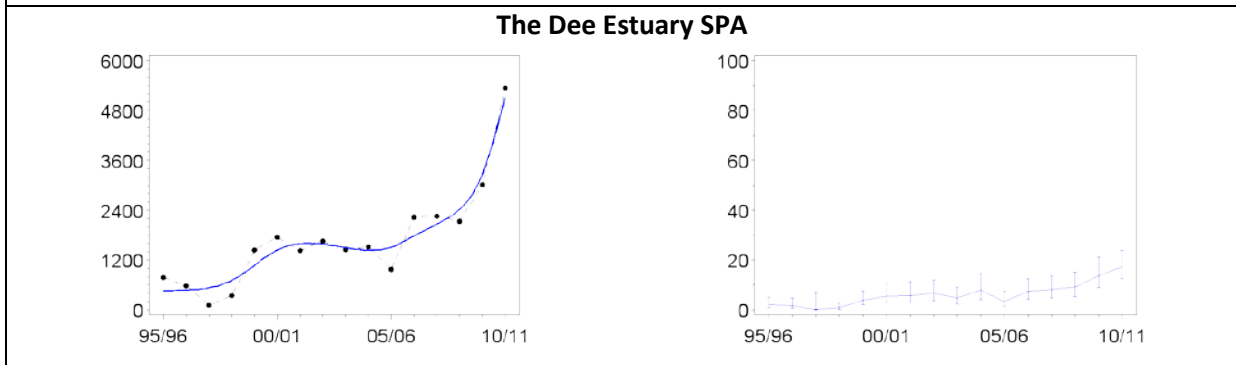
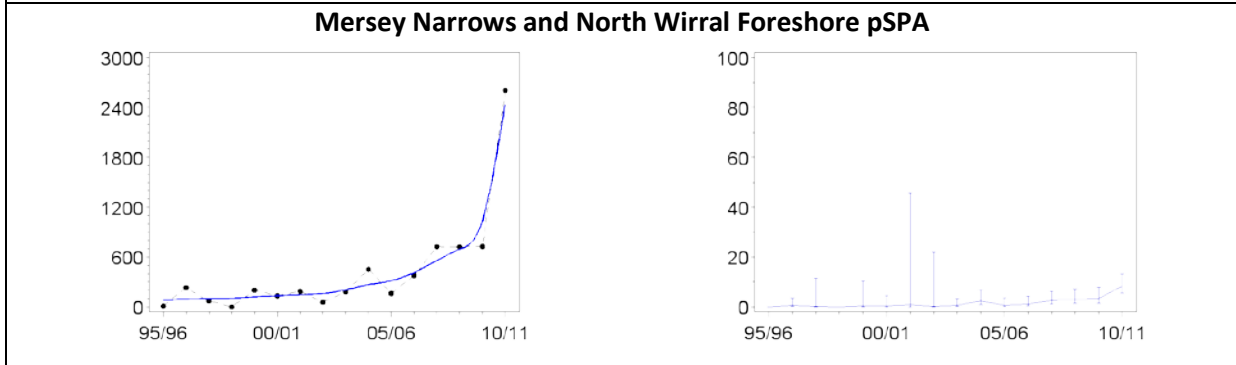


Site trend relative to regional trend



Mersey Estuary SPA

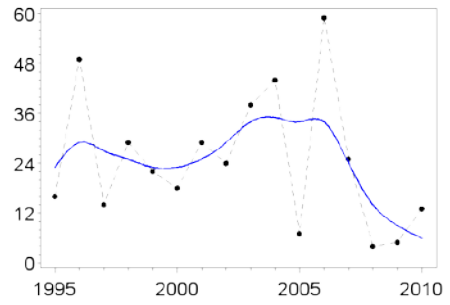
Counting of gulls is optional under the WeBS scheme and no gull counts have been undertaken during standard WeBS counts for this site



Little Gull (summer)

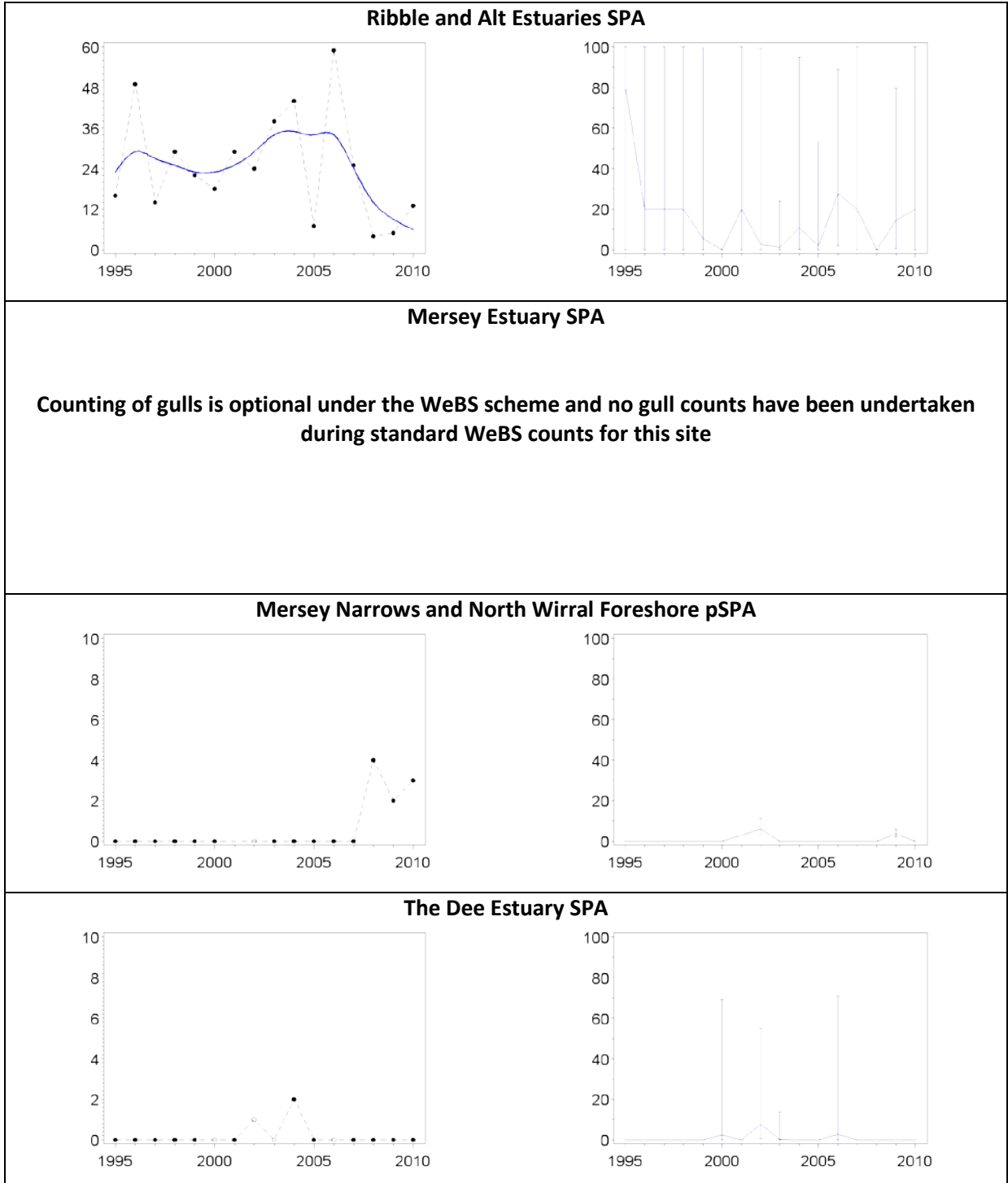


Regional trend (North West England)



Site Trend

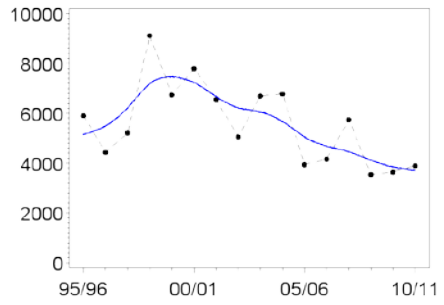
Site trend relative to regional trend



Common Gull

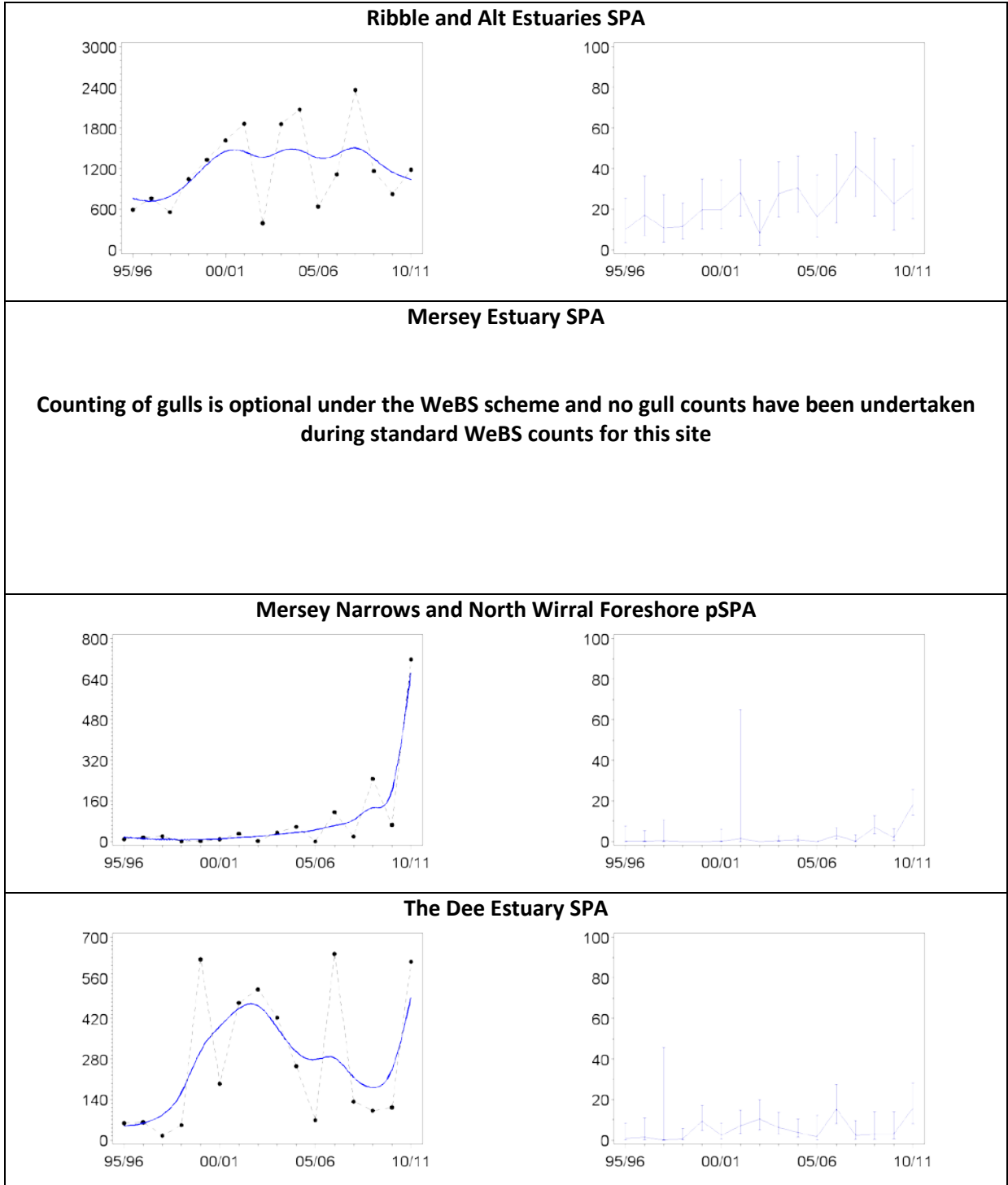


Regional trend (North West England)



Site Trend

Site trend relative to regional trend

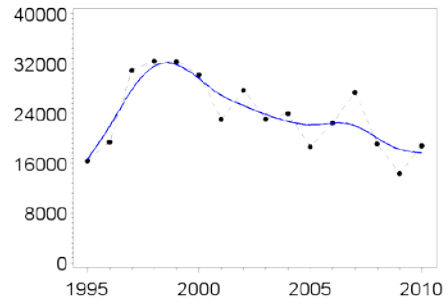


Lesser Black-backed Gull (summer)

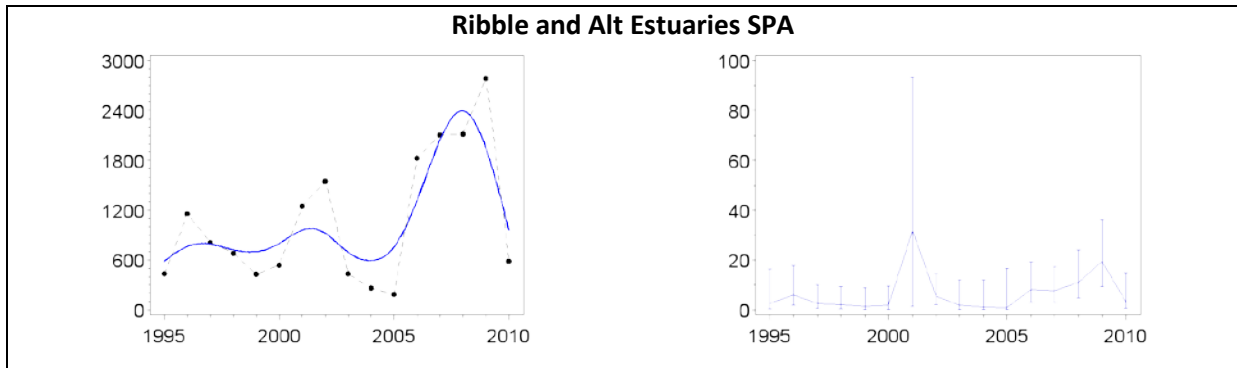


Site Trend

Regional trend (North West England)

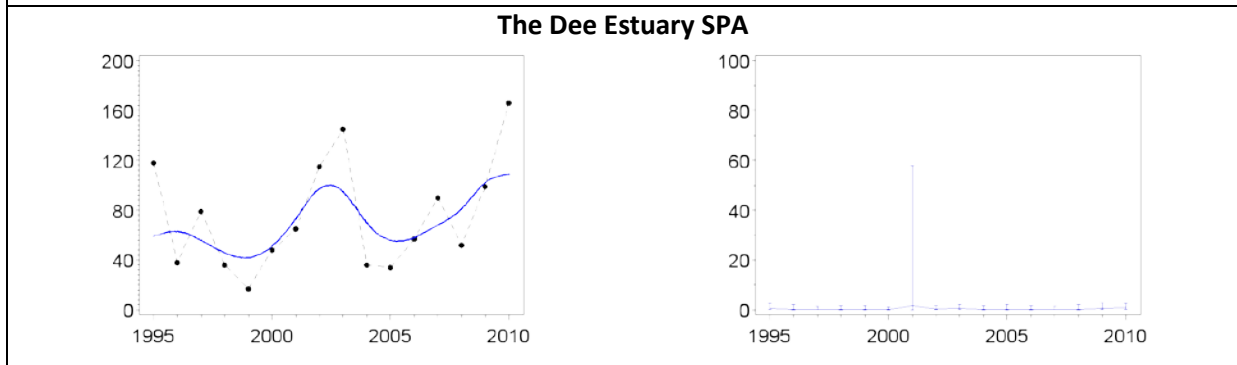
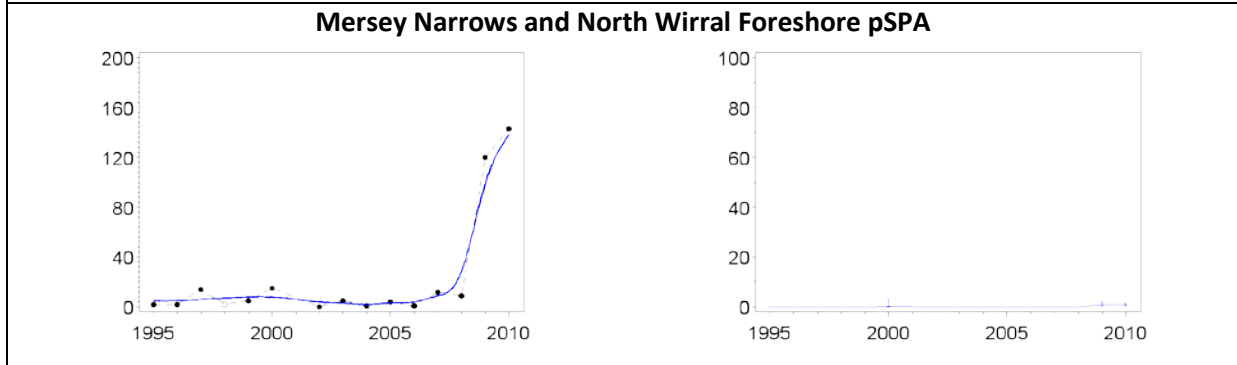


Site trend relative to regional trend



Mersey Estuary SPA

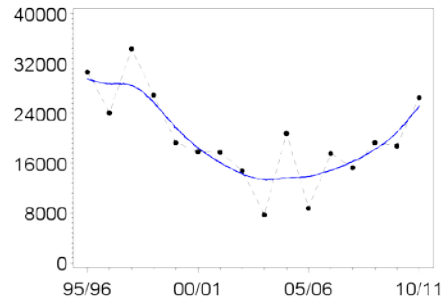
Counting of gulls is optional under the WeBS scheme and no gull counts have been undertaken during standard WeBS counts for this site



Herring Gull

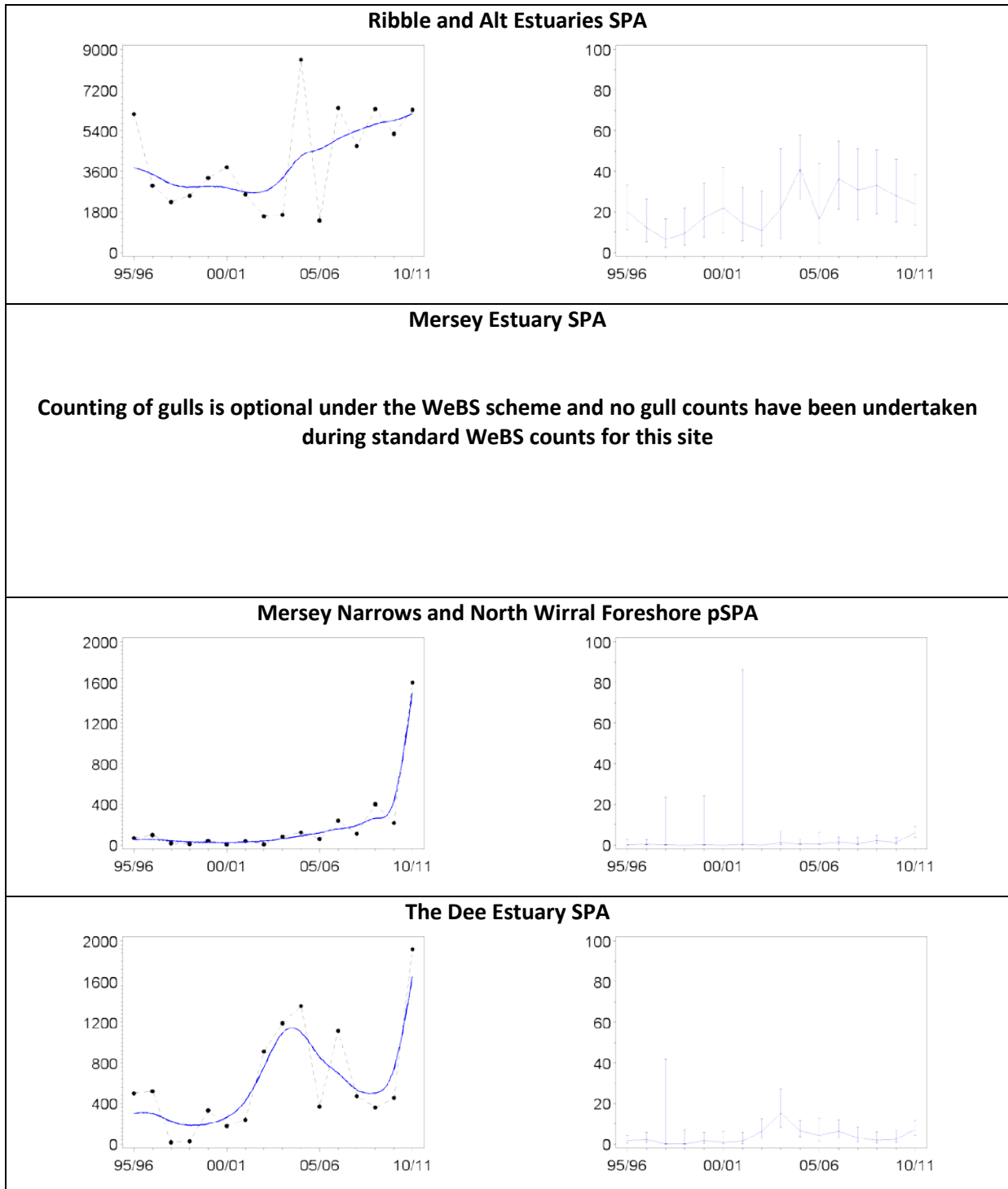


Regional trend (North West England)



Site Trend

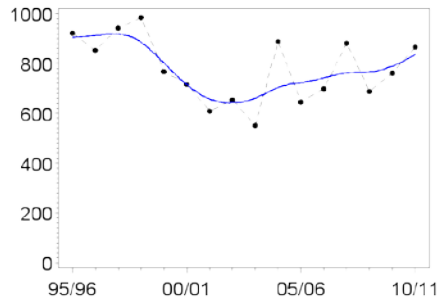
Site trend relative to regional trend



Great Black-backed Gull

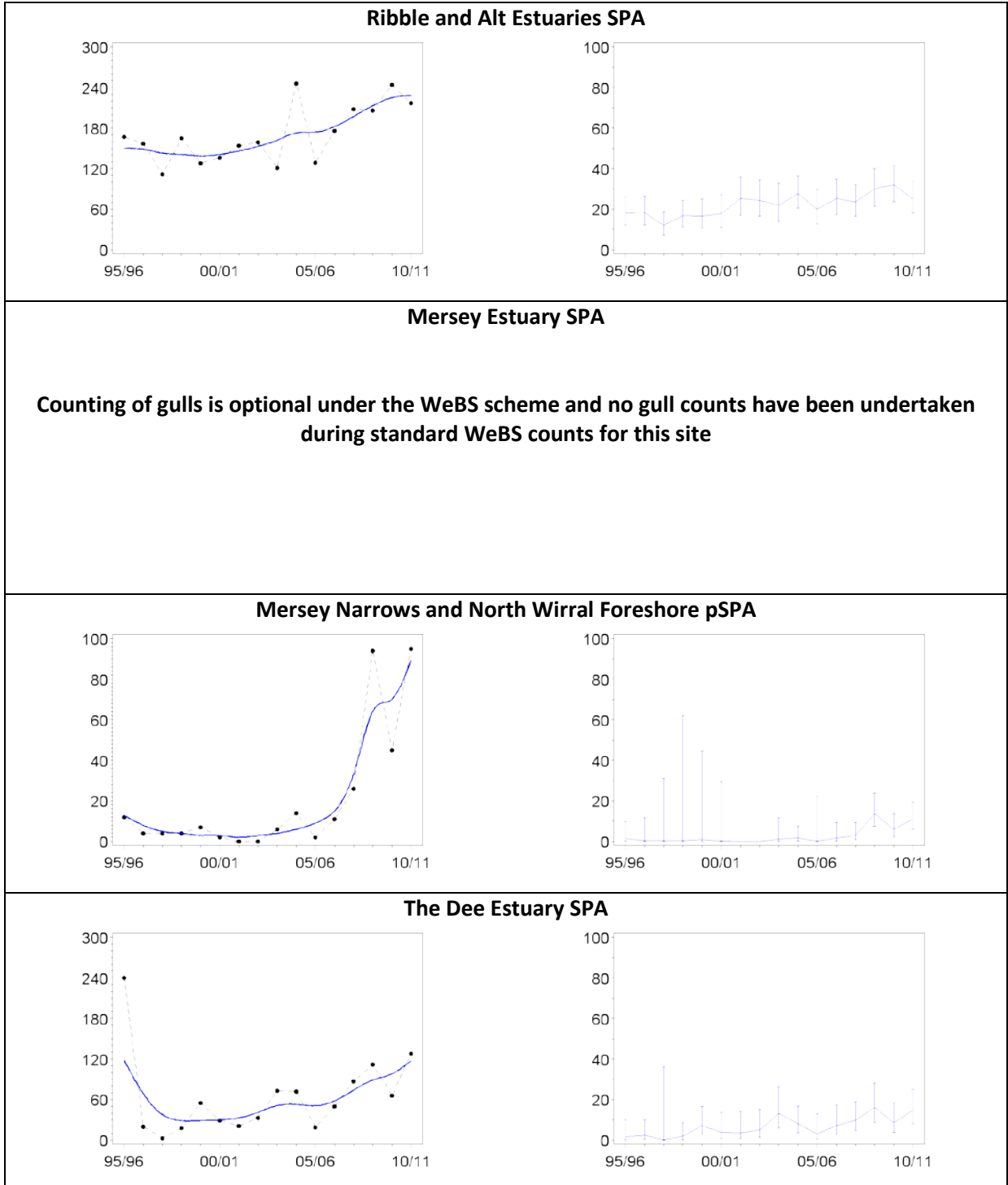


Regional trend (North West England)



Site Trend

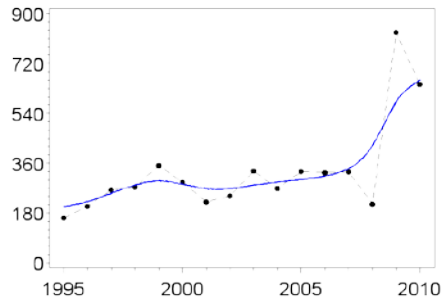
Site trend relative to regional trend



Common Tern (summer)



Regional trend (North West England)



Site Trend

Site trend relative to regional trend

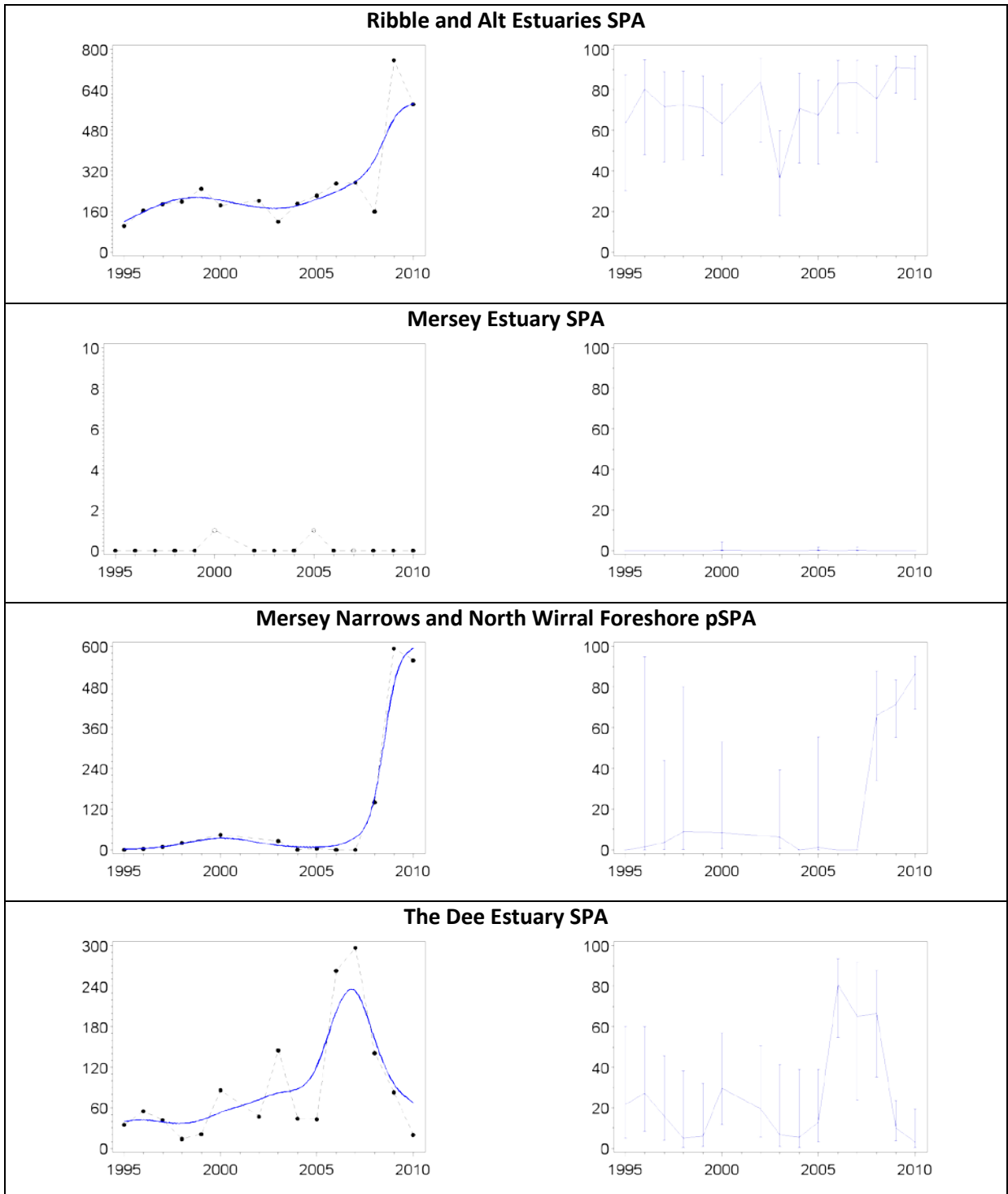


Photo credits:

Al Downie: Bar-tailed Godwit

Anne Cotton: Whooper Swan; Cormorant

Dawn Balmer: Knot

Derek Belsay: Herring Gull

Edmund Fellows: Great Black-backed Gull

Jill Packenha: Bewick's Swan; Teal; Great Crested Grebe; Ringed Plover; Common Tern

John Bowers: Shelduck; Grey Plover

John Harding: Lapwing; Dunlin; Black-tailed Godwit; Curlew; Black-headed Gull; Common Gull

Mike Weston: Common Scoter; Oystercatcher

Neil Calbrade: Wigeon; Pintail; Sanderling

Nigel Clark: Golden Plover

Peter Wilson: Lesser Black-backed Gull

Richard Vaughan: Little Gull