



Access Prioritisation

A strategic approach to managing local paths in
County Durham

Audrey Christie, Durham County Council

Jim Phillips, Ethos Environmental Planning

Geoff Hughes, County Durham LAF



walk · cycle · ride



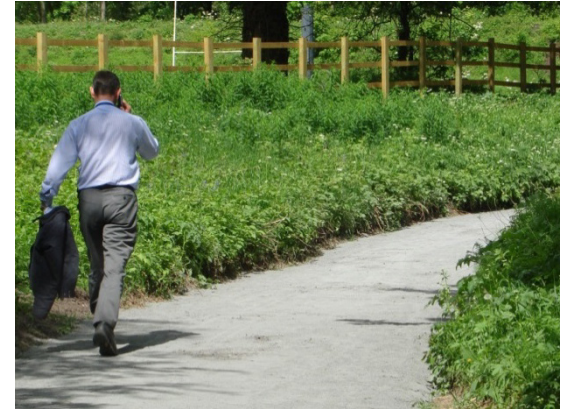
prow@durham.gov.uk · www.durham.gov.uk/prow

Access Prioritisation

A strategic approach to managing local paths in County Durham

This workshop will explore:

- What we wanted from this approach to path management
- What information to consider and how to gather it
- The context of each of the phases of the study
- How the studies were conducted
- What's been achieved and how our path networks have benefited



walk · cycle · ride

Access Prioritisation

A strategic approach to managing local paths in County Durham

Access Prioritisation is a study of a local path network including the views of the people who use and manage it, to produce a prioritised schedule of proposed path improvements

What we wanted from this approach

An evidence base to use as a lever for additional funding

Creation of a prioritised work programme for the access/PROW network

An evidence base for when new developments proposed and land use planning policies devised

Make sure you:

Tell us about the needs the people who will use your project have.

Explain how you know there is a need.

Show how your project will meet the need you have identified.

Need could be demonstrated by:
*meetings involving those interested in your project.
*Surveys/research & statistics.
*Identifying gaps in service provision and people who would use the service provided.
*Links to local and or national strategies.

Notes including possible solution if funding	Rough Estimated cost
Resurfacing of 300m stretch from alongside 17 The Dell along river. Planings with whin dust top. 2-3m wide	£9 - 12,000
Suggested dog bins NB There is one at junction with Fps 37 and 38 2 new signposts	PROW revenue
Suggested lighting	
Resurfacing of 400m stretch from Woodhouse Lane to Middlehope Grove. Tarmac or planings with whin dust top. 2-3m wide	£12 - 16,000 LTP
Resurfacing of 300m stretch from Footpath 39 to cemetery (River Gaunless). Planings with whin dust top. 2-3m wide	£9 - 12,000 LTP

walk · cycle · ride

Access Prioritisation

A strategic approach to managing local paths in County Durham

What we wanted taking into account

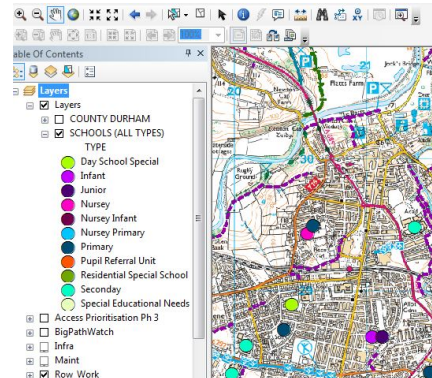
Asking people who use the network and those that manage it



Site surveys of the condition of the network



Desktop analysis to identify population, proximity to services and other accessible areas (eg parks, open spaces) etc



walk · cycle · ride

Access Prioritisation

A strategic approach to managing local paths in County Durham

How did it all start

Brainchild of the
County Durham LAF

An action in the Durham's first
ROWIP (2007) and all others
since



walk · cycle · ride

Access Prioritisation

A strategic approach to managing local paths in County Durham

The 3 studies - 2009 to 2016

Phase 1 2009/10
Spennymoor and
Peterlee/Easington
2km around 2 projected
Housing Growth Points
Study cost £27,000

Phase 2 2010/11
Durham and Seaham
A 2km buffer around a major
development site in Seaham and a
'city boundary' in Durham
Study cost £29,500

Phase 3 2015/16
Bishop Auckland, Newton
Aycliffe and Shildon
3 studies to the 'Town
boundaries'
Study cost £50,000

walk · cycle · ride

Access Prioritisation

A strategic approach to managing local paths in County Durham

What's been delivered as a result of the studies

Approximately £295,000 of path improvements in the Phase 1 and 2 study areas



For 2016/17 £50,000 has been secured for delivery in the Phase 3 area and work is ongoing to secure further funds



walk · cycle · ride

Access Prioritisation

A strategic approach to managing local paths in County Durham

Undertaking the study.....

- Consultation
- On site audits
- Desktop assessment

walk · cycle · ride

Access Prioritisation

A strategic approach to managing local paths in County Durham

Consultation.....

- Stakeholder Workshops
- On-site user consultation
- User consultation (Web-based)

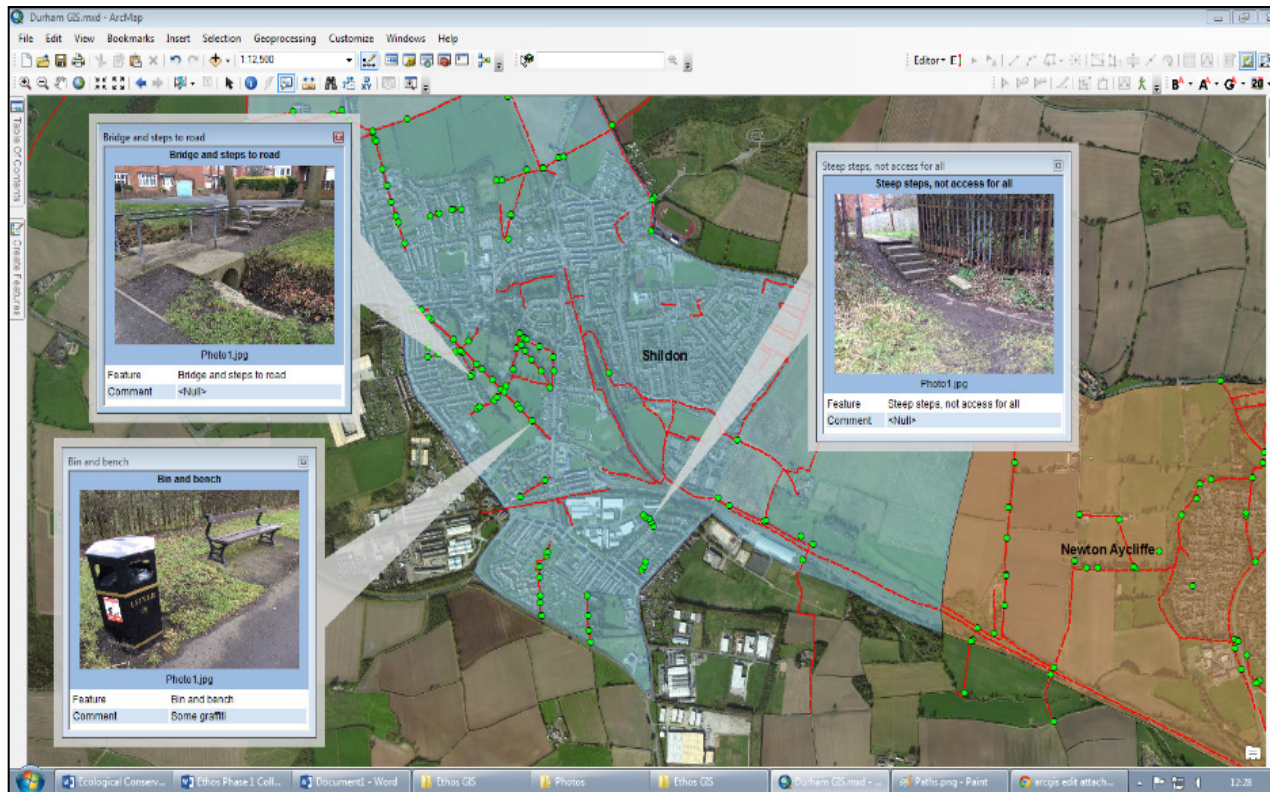


walk · cycle · ride

Access Prioritisation

A strategic approach to managing local paths in County Durham

Audits.....



walk · cycle · ride

Access Prioritisation

A strategic approach to managing local paths in County Durham

Desktop Assessment.....



- Existing condition
- Level of use
- Potential improvements
- Connectivity
- Access to community facilities
- Access to open space
- Evidence of local need

walk · cycle · ride

Access Prioritisation

A strategic approach to managing local paths in County Durham

DESKTOP ASSESSMENT.....



- Income deprivation score
- Health/BMI score
- Proximity to allocated sites
- Tourism opportunities

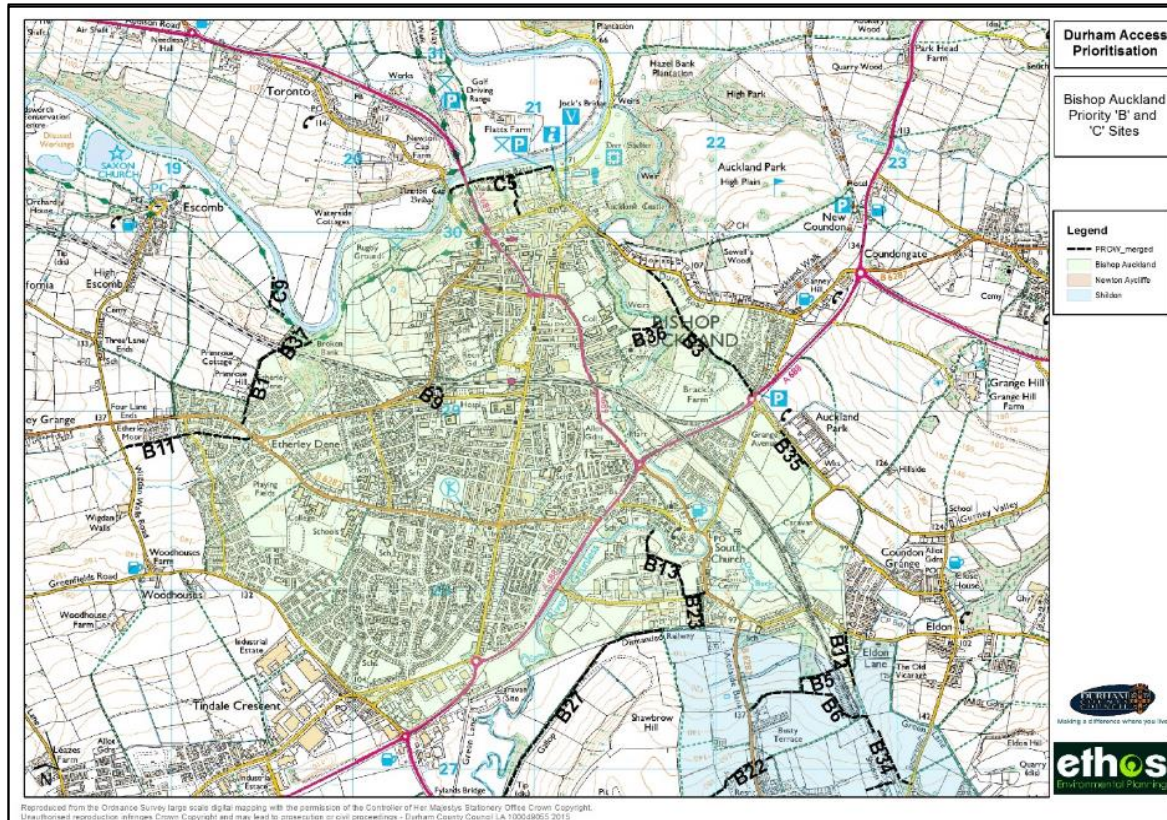


walk · cycle · ride

Access Prioritisation

A strategic approach to managing local paths in County Durham

Prioritising Sites.....



walk · cycle · ride

Access Prioritisation

A strategic approach to managing local paths in County Durham

An overview

- A valuable and robust tool for assessing the path network and identifying priorities for improvement
- Evidence base for justifying carrying out work or lobbying for funds/resources to be invested
- Delivery of projects whose value far exceeds the investment in the studies - investment to reap benefits later
- Method can be weighted to suit circumstances/funding. Ours has been focussed on urban areas where new/proposed development and in a climate where most lucrative funding from LTP (utility)
- High profile project - recognition at a high level within Durham County Council

walk · cycle · ride