

Catchment 5: Rivers Axe and Otter

Only holdings within the capital grant scheme target area(s) will be eligible to apply for a grant. Due to limited funds, applications from outside of the target areas will not be accepted for the 14/15 scheme.

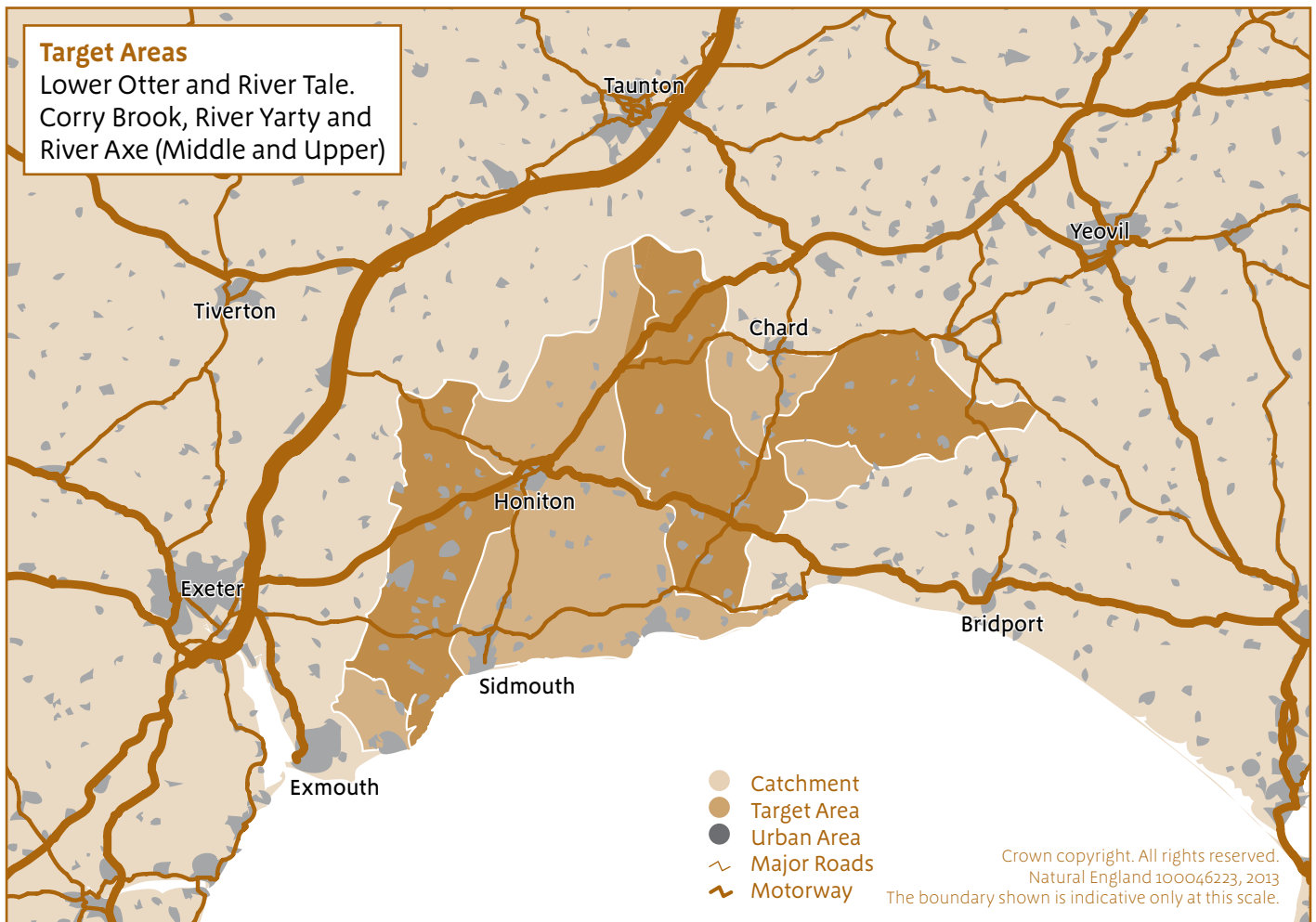
An application is classed as in target if more than 50% of the proposed capital items, are within the target area.

If you are unsure if you would be classed as in target please contact your CSFO to confirm, before submitting an application.

Please see indicative map for target area boundaries.

Detailed maps for individual catchments must be viewed on the MAGIC website at <http://magic.defra.gov.uk/MagicMap.aspx>. From this link tick the 'I Agree to the Terms...' tick box and click OK. Then in the 'Table of Contents' select the 'Designations > Land-Based Designations > Non-statutory' tick box. Then in the 'Map Search' text box select 'Postcodes' from the dropdown list, then enter your postcode into the text box.

This will load a map that will show if your land is in a priority catchment and target area. You may need to turn off some of the other designations using the 'Table of Contents' buttons next to the map to see your land area more clearly.



Capital Items

In this catchment we are particularly interested in funding applications which aim to:

- Reduce soil, phosphate and nitrate run-off from agricultural holdings;
- Reduce potential damage to soil caused by vehicle wheelings and/or livestock movements and poaching during wet conditions;
- Improve the efficiency of manure management to reduce the need for spreading manures at times that can result in a high risk of run-off;
- Improve field operations to limit sources and pathways for soil wash and run-off into water courses.

The following priority capital items (Item code in brackets) will assist in delivering these aims and will be favoured in the grant application process (not listed in order of priority):

For the Axe and Otter Catchments

- Watercourse fencing (CSFo03)
- Hard bases for livestock drinkers and feeders (CSFo07)
- Livestock drinking trough with associated pipework (CSFo10)
- Cross drains (CSFo11)
- Sediment ponds and traps (CSFo12)
- Yard works for clean and dirty water separation (CSFo14)
- Livestock and machinery tracks and associated livestock fencing (CSFo21)
- Roofing of manure storage and livestock gathering areas (CSFo23)
- Roofs for slurry and silage stores (CSFo26)

In addition to above:

Lower Otter and River Tale

- Rainwater storage tanks (CSFo17)

Corry Brook, River Yarty and River Axe (Middle and Upper)

- Relocation of gates & associated gapping up (CSFo01)

Further Information

For further information and advice, please contact your Catchment Sensitive Farming Officer or Catchment Partnership coordinator:

Bryn Thomas

Tel: 0300 060 0705

Mobile: 07776 225449

Email: bryn.w.thomas@naturalengland.org.uk

CSF5/5

Prioritisation Criteria

Funding is limited and if the total amount of grant applied for by all applicants exceeds the available budget, grants will be allocated to those applications which:

- Include high priority capital items,
- Have not previously received a CSF capital grant,
- Are in a bathing water priority catchment,
- Have already engaged with CSF or CSF partnerships in the last two years prior to submission of application. For example, attended a CSF organised event or workshop and/or received 1:1 advice and a farm visit from a local Catchment Sensitive Farming Officer (CSFO), CSF contractor or catchment partnership partner/contractor.

These additional criteria will ensure that grants are awarded to only those applications which best meet the scheme's priorities, and allow some differentiation between applications to give more opportunity to farmers who have not had grants before.

For full details see the 'Additional Scoring Criteria' in the 'Key dates, information and changes' leaflet.



A clear solution for farmers

CATCHMENT SENSITIVE FARMING

Catchment Sensitive Farming (CSF) is delivered in partnership by Natural England, the Environment Agency and Defra.