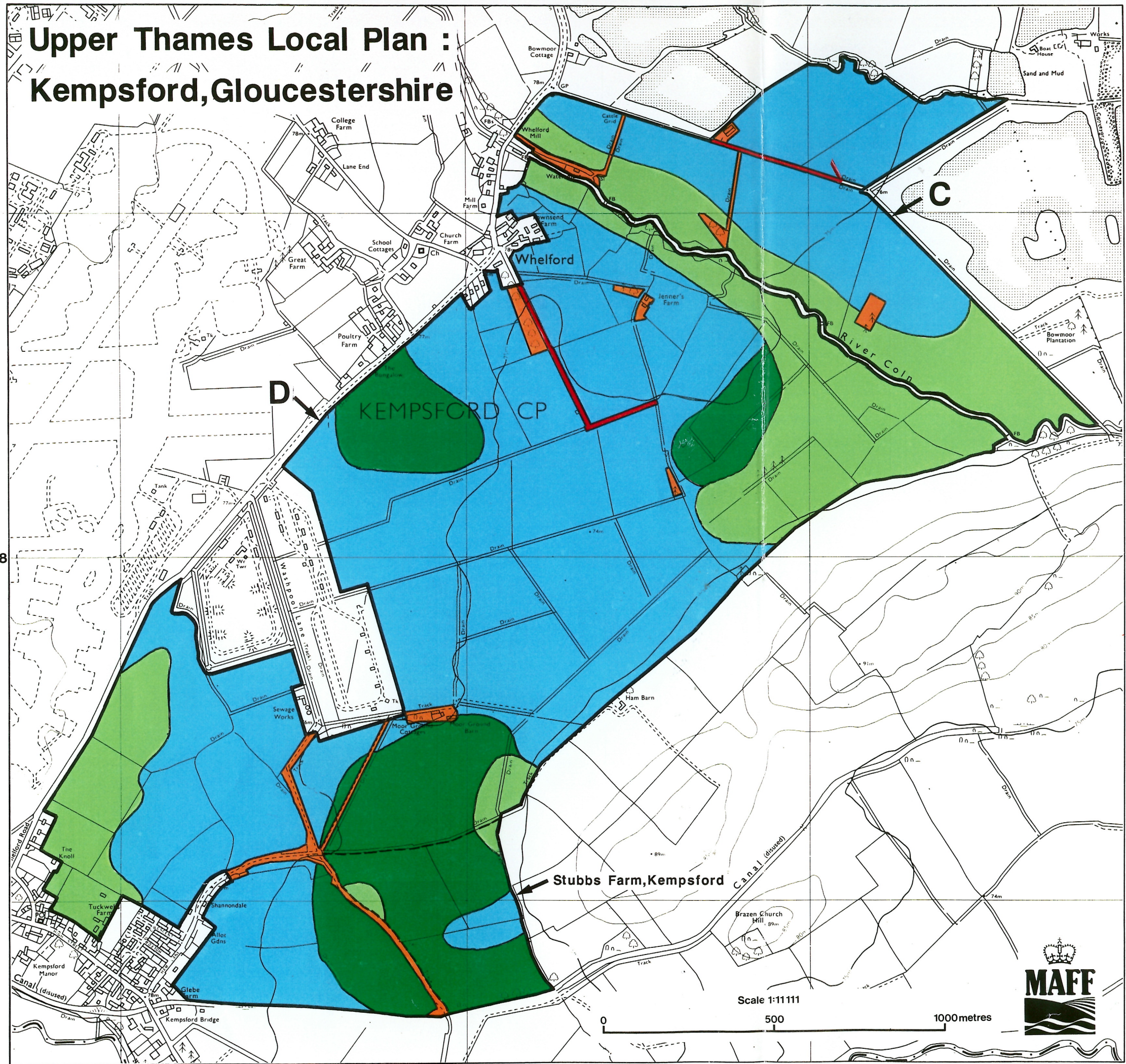


# Upper Thames Local Plan : Kempford, Gloucestershire



## Ministry of Agriculture, Fisheries and Food Agricultural Land Classification

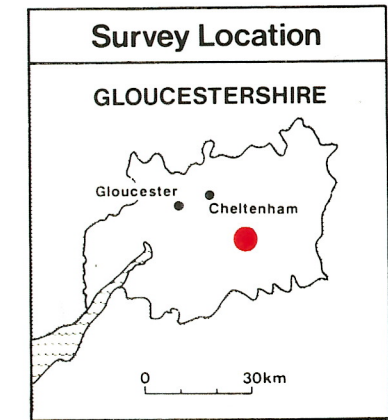
Agricultural Land			
ALC grade		Agricultural land quality	Degree of limitation
Grade 1	*	Excellent	None or very minor
Grade 2	■	Very good	Minor
Grade 3a	■	Good	Moderate
Grade 3b	■	Moderate	Moderate to severe
Grade 4	*	Poor	Severe
Grade 5	*	Very poor	Very severe

Other Land Categories			
Urban	■	Agricultural buildings	*
Non - agricultural	■	Open water	*
Woodland	*W	Not surveyed	*

\*Grade/Category not present within survey area

Further details contained in revised  
Agricultural Land Classification, M.A.F.F. 1988.



The information is accurate at the base map scale but any enlargement would be misleading.

Reproduction in whole or in part by any means is prohibited without the prior permission of M.A.F.F.

Surveyed by the Resource Planning Group Oct 1990. Map produced by the Cartographic Unit, Farm and Countryside Service, M.A.F.F. Bristol. Ref.no.82/90

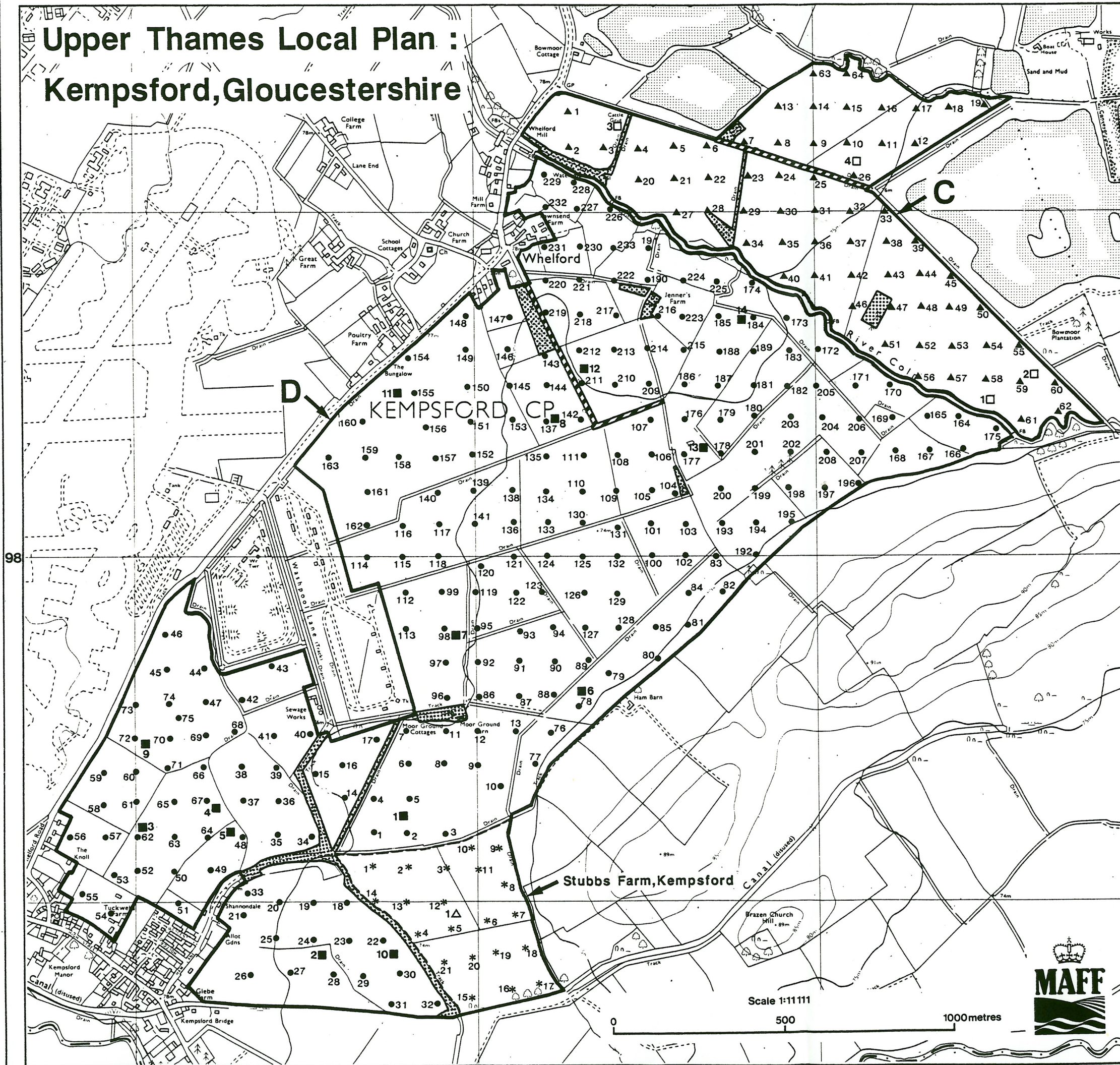
Based upon the 1979 Ordnance Survey 1:10 000 map with the permission of The Controller of Her Majesty's Stationery Office, Crown Copyright Reserved.

© Crown Copyright Reserved 1991.



# Upper Thames Local Plan : Kempford, Gloucestershire

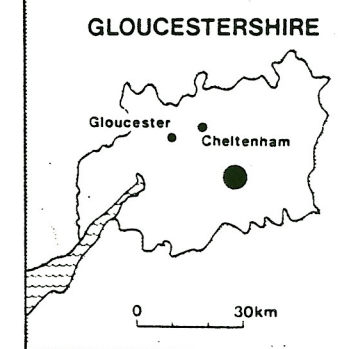
## Ministry of Agriculture, Fisheries and Food Agricultural Land Classification



### Auger Sample Points

□ 1-4	Location of soil pits	
△ 1	Location of sample points	
■ 1-14		
▲ 1-64		
* 1-21		
● 1-233	(Details contained in separate schedule)	
Urban	Agricultural buildings	
Non-agricultural	Open water	
Woodland	Not surveyed	
* Grade/Category not present within survey area		

### Survey Location



The information is accurate at the base map scale but any enlargement would be misleading.

Reproduction in whole or in part by any means is prohibited without the prior permission of M.A.F.F.

Surveyed by the Resource Planning Group Oct 1990. Map produced by the Cartographic Unit, Farm and Countryside Service, M.A.F.F., Bristol. Ref.no.82/90/29

Based upon the 1979 Ordnance Survey 1:10 000 map with the permission of The Controller of Her Majesty's Stationery Office, Crown Copyright Reserved.

© Crown Copyright Reserved 1991.

Scale 1:11111

500

1000 metres



# The Manor Farm, Kempford, Gloucestershire

## Ministry of Agriculture, Fisheries and Food Soil Resources - Topsoil


### Materials and Volumes

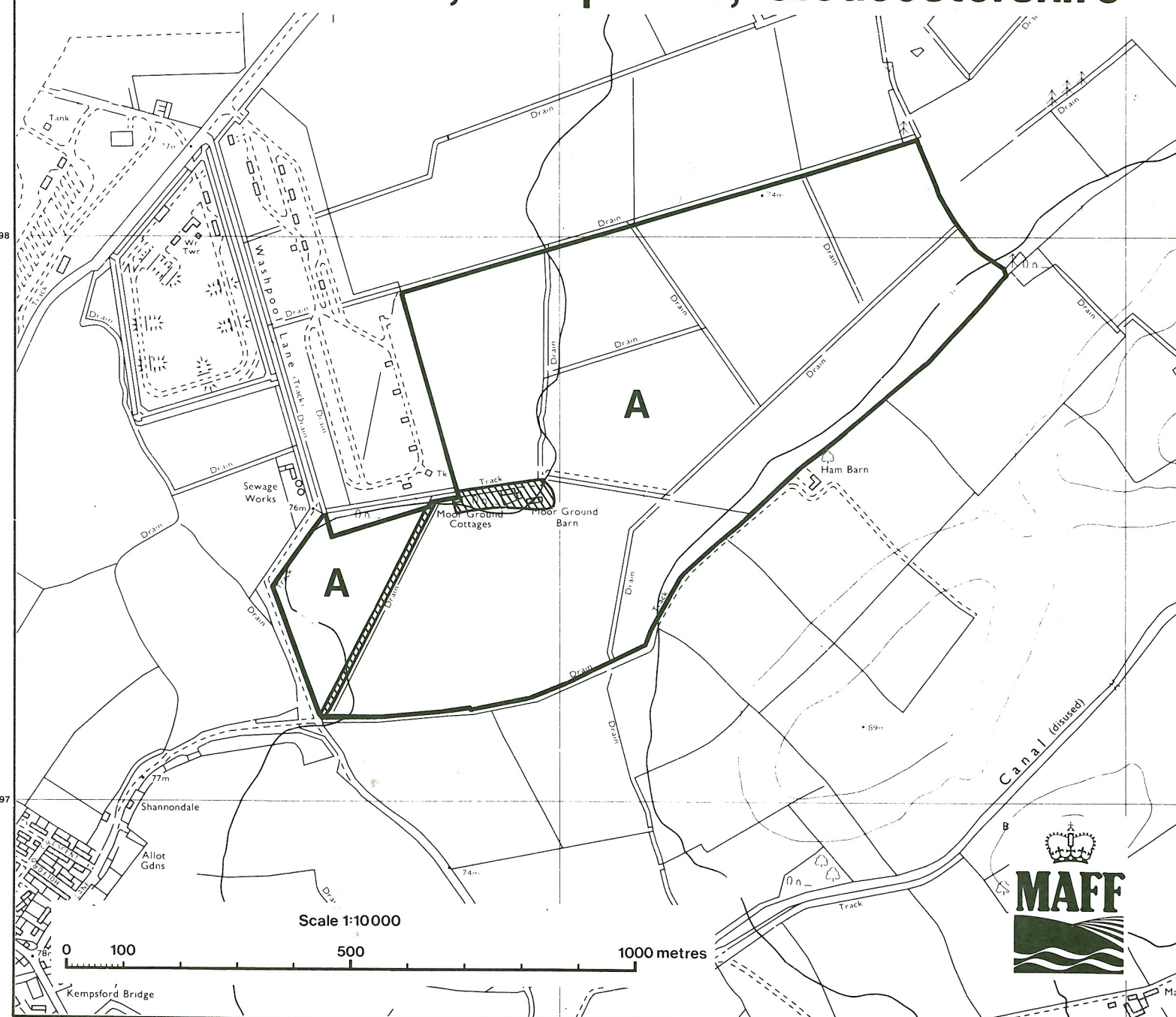
Map Unit	Average Depth (cm)	Area (ha)	Volume (m <sup>3</sup> )
A	20	66.45	132900

Total Topsoil Resource = 132900m<sup>3</sup>

### Textures

A - MCL

 Non Agricultural



The information is accurate at the base map scale but any enlargement would be misleading.

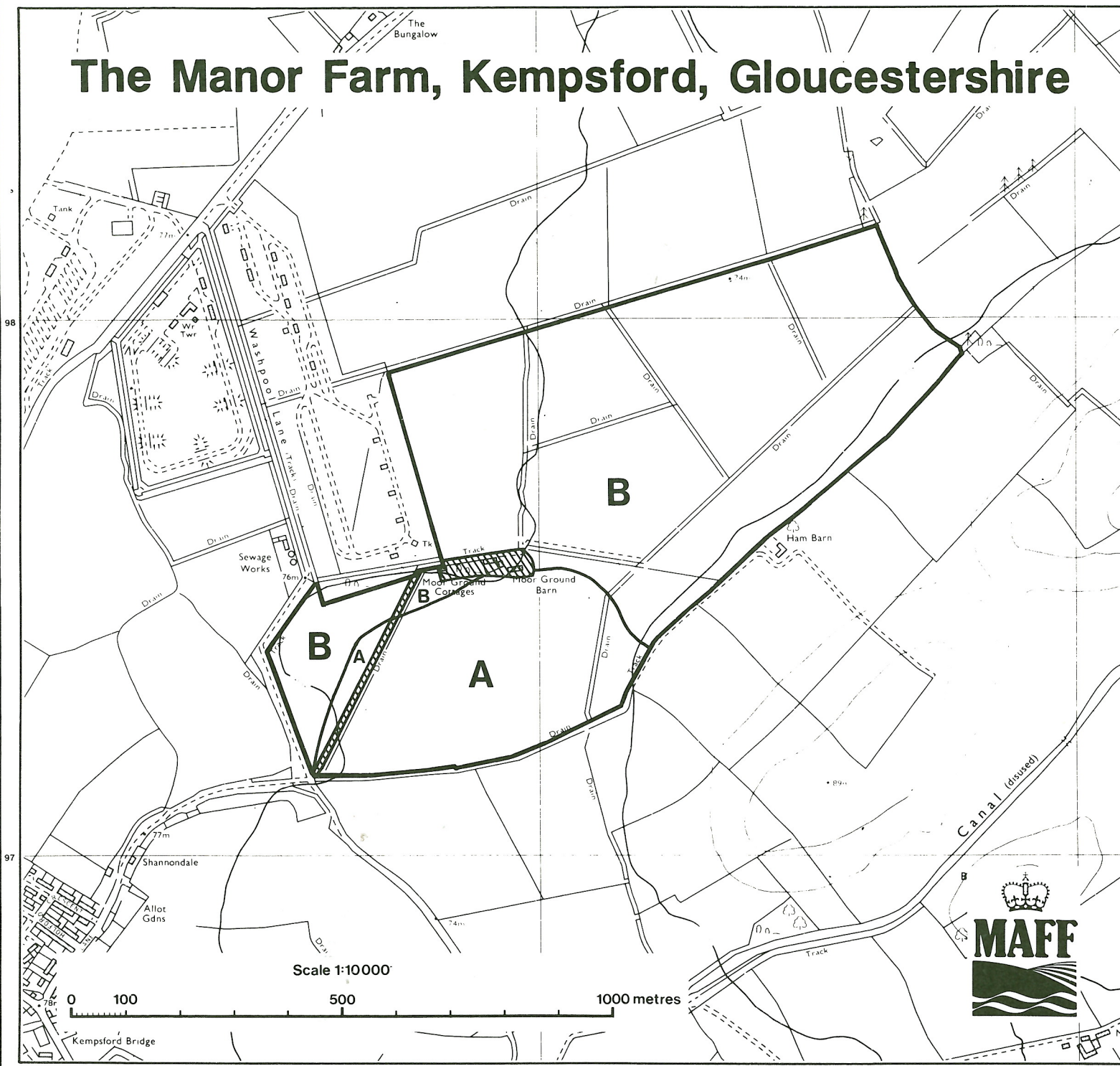
Reproduction in whole or in part by any means is prohibited without the prior permission of M.A.F.F.

Surveyed by the Resource Planning Group Oct 1990 Map produced by the Cartographic Unit, Farm and Countryside Service, M.A.F.F. Bristol. Ref.no. 13/91

Based upon the 1979 Ordnance Survey 1:10000 map with the permission of The Controller of Her Majesty's Stationery Office, Crown Copyright Reserved.

© Crown Copyright Reserved 1991

# The Manor Farm, Kempford, Gloucestershire



## Materials and Volumes


Map Unit	Average Depth (cm)	Area (ha)	Volume (m <sup>3</sup> )
A	70	15.85	110950
B	60	50.6	303600

**Total Lower Subsoil Resource = 414550m<sup>3</sup>**

### Textures

**A - LCS (approx 60% stone)**

**B - LCS (approx 40-50% stone)**

 **Non Agricultural**

The information is accurate at the base map scale but any enlargement would be misleading.

Reproduction in whole or in part by any means is prohibited without the prior permission of M.A.F.F.

Surveyed by the Resource Planning Group Oct 1990 Map produced by the Cartographic Unit, Farm and Countryside Service, M.A.F.F., Bristol. Ref.no. 13/91

Based upon the 1979 Ordnance Survey 1:10000 map with the permission of The Controller of Her Majesty's Stationery Office, Crown Copyright Reserved.

© Crown Copyright Reserved 1991

