

# Identification of Functionally Linked Land supporting SPA waterbirds in the North West of England – Phase 2 Appendix 7 – Qualifying Species Buffer Plans

BOWLAND ECOLOGY. 2022. December 2022

Natural England Commissioned Report NECR483






This document includes maps to show the different distances that certain qualifying species could travel from the six SPA's in the study. The SPA's are shown as light blue hashed polygons. The different coloured lines represent the different buffers for each species.

© JNCC 2016

Drawn by: LB  
Checked by: HD  
Date: 25.08.2022



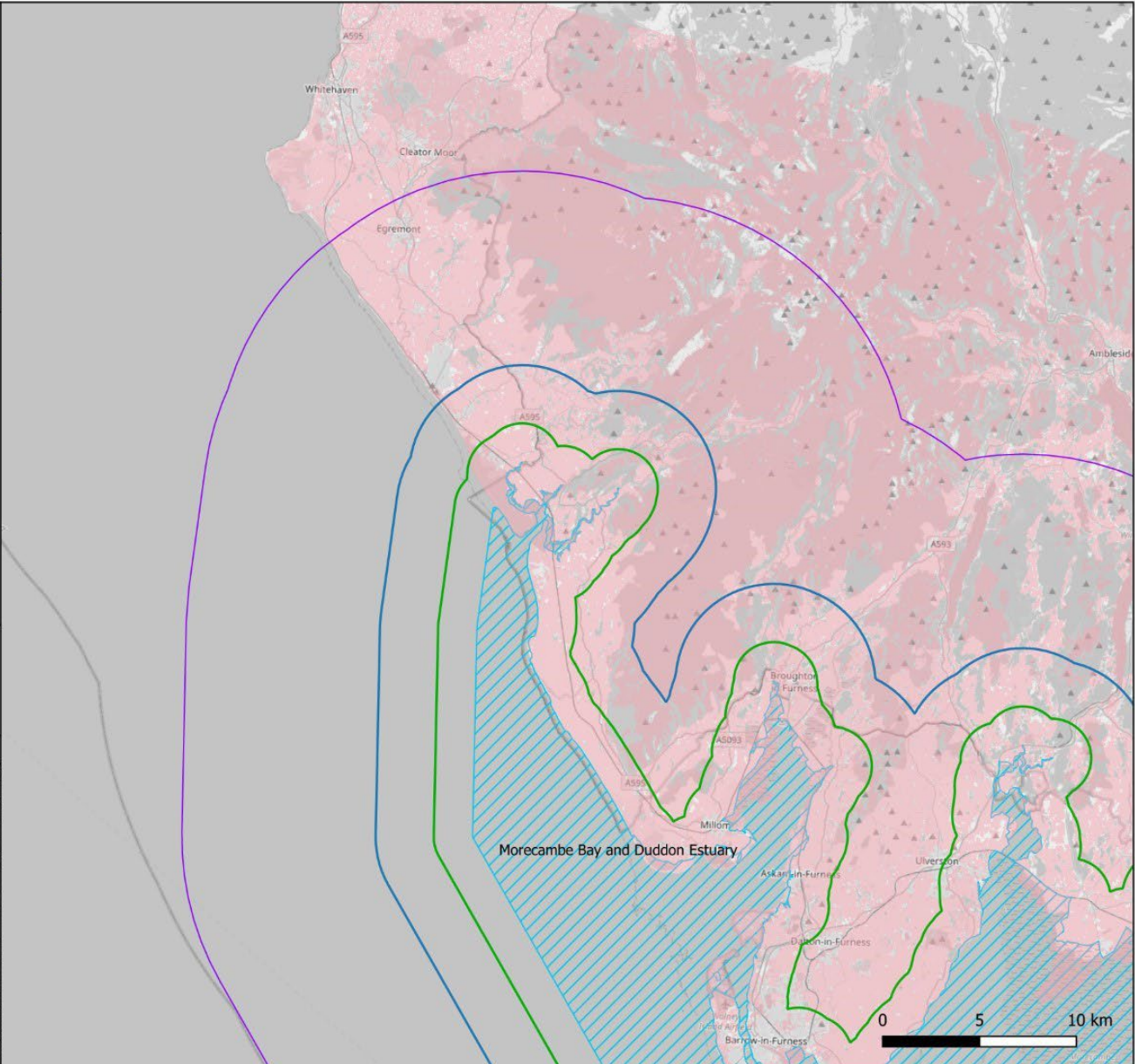
**Legend**

-  Habitats with potential to be used by SPA qualifying species (CROME data)
-  Relevant SPA's
- Distances travelled by SPA qualifying species
  -  Curlew 15km buffer
  -  Pintail 2km buffer
  -  Whooper Swan 5km buffer

© Natural England 2022  
© OpenStreetMap contributors 2022

All other data sources used to produce these maps and licencing information can be found in Appendix 1 of the Natural England FLL Project Report - Phase 2.

**Map Location**





BOW17/1311 Natural England Functionally Linked Land (FLL) Project - Phase 2

Drawing title: Potentially suitable habitats and likely travel distances for qualifying SPA species

Page 2 of 4

Drawn by: LB  
Checked by: HD  
Date: 25.08.2022



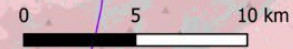
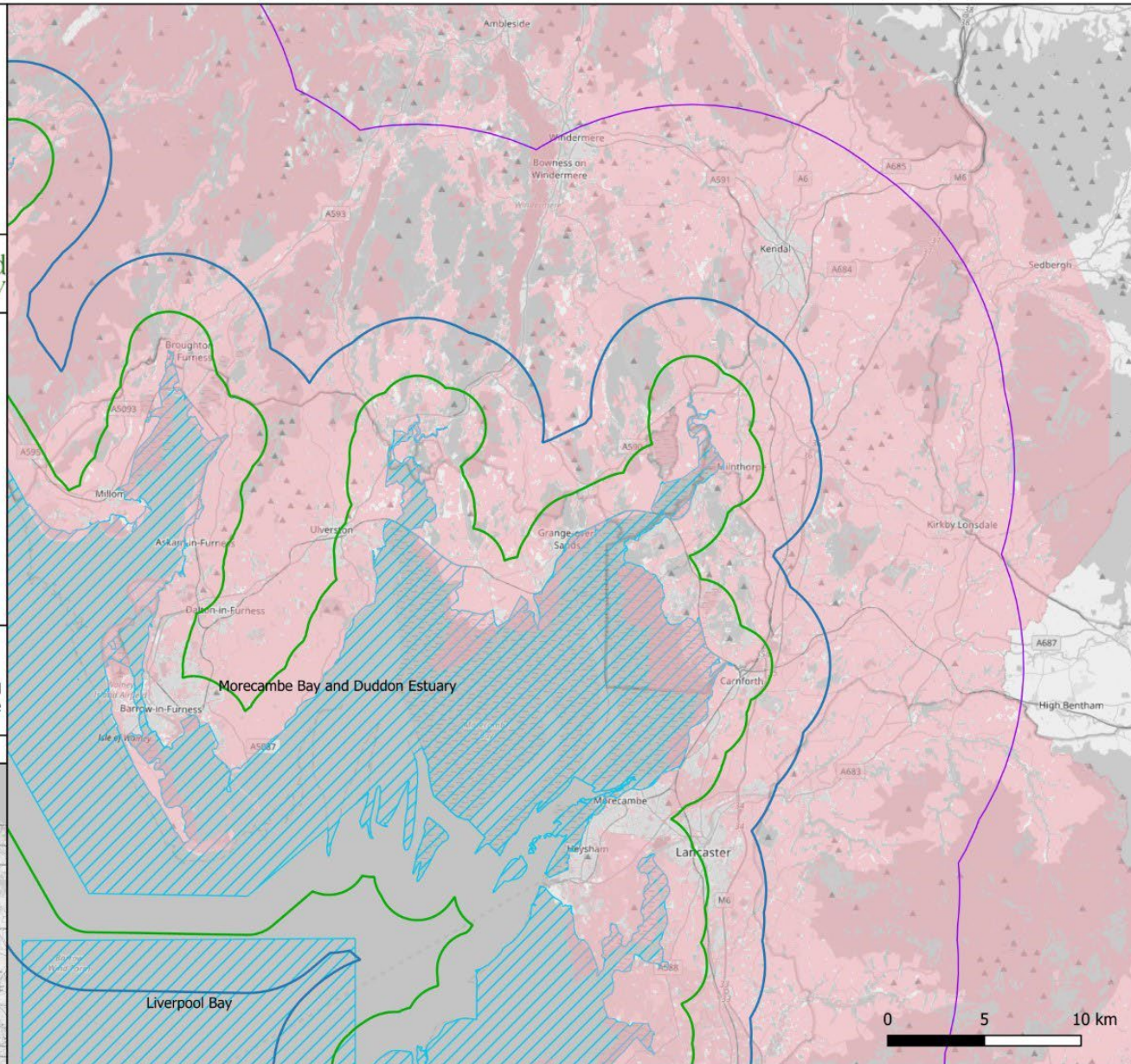
Legend

- Habitats with potential to be used by SPA qualifying species (CROME data)
- Relevant SPA's
- Distances travelled by SPA qualifying species
  - Curlew 15km buffer
  - Pintail 2km buffer
  - Whooper Swan 5km buffer

© Natural England 2022  
© OpenStreetMap contributors 2022

All other data sources used to produce these maps and licencing information can be found in Appendix 1 of the Natural England FLL Project Report - Phase 2.

Map Location





BOW17/1311 Natural England Functionally Linked Land (FLL) Project - Phase 2

Drawing title: Potentially suitable habitats and likely travel distances for qualifying SPA species

Page 3 of 4

Drawn by: LB  
Checked by: HD  
Date: 25.08.2022



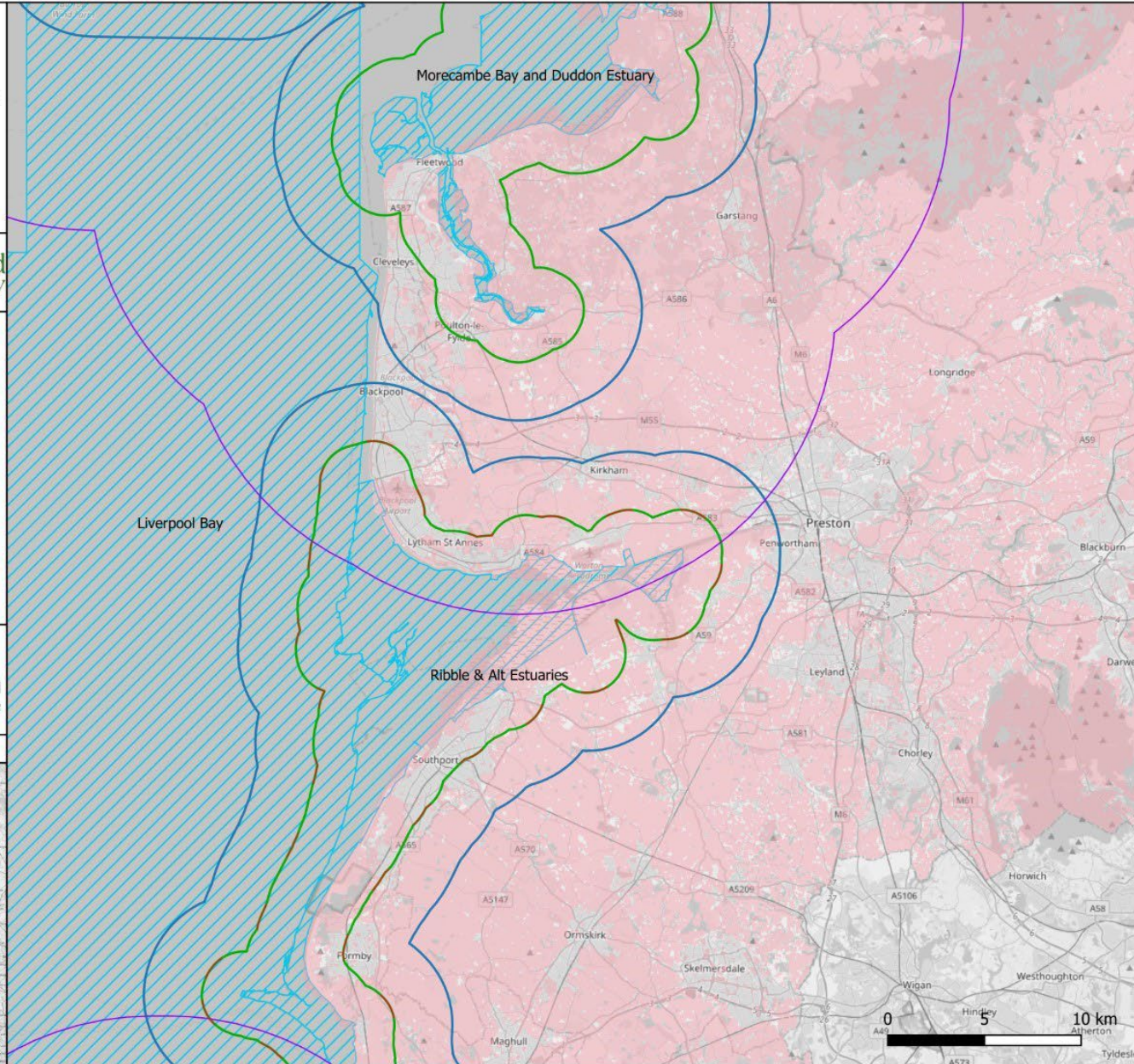
Legend

- Habitats with potential to be used by SPA qualifying species (CROME data)
- Relevant SPA's
- Distances travelled by SPA qualifying species
  - Widgeon 2km buffer
  - Curlew 15km buffer
  - Pintail 2km buffer
  - Whooper Swan 5km buffer

© Natural England 2022  
© OpenStreetMap contributors 2022

All other data sources used to produce these maps and licencing information can be found in Appendix 1 of the Natural England FLL Project Report - Phase 2.

Map Location





Drawn by: LB  
Checked by: HD  
Date: 25.08.2022



**Legend**

- Habitats with potential to be used by SPA qualifying species (CROME data)
- Relevant SPA's
- Distances travelled by SPA qualifying species**
- Widgeon 2km buffer
- Curlew 15km buffer
- Pintail 2km buffer
- Whooper Swan 5km buffer

© Natural England 2022  
© OpenStreetMap contributors 2022

All other data sources used to produce these maps and licencing information can be found in Appendix 1 of the Natural England FLL Project Report - Phase 2.

**Map Location**

