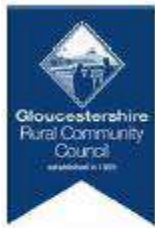


# Cotswold Catchment and PES and Integrated Local Delivery

**Jenny Phelps**

Farming and Integrated Environmental Local  
Delivery (FIELD) Adviser





COTSWOLD DISTRICT COUNCIL



Gloucestershire



A clear solution for farmers  
CATCHMENT SENSITIVE FARMING



Environment Agency



The catchment based approach



Cotswold Catchment –  
*Upper Thames*, Windrush  
And Evenlode



# Problems being addressed

- The need for a PES that delivers for, and with, all partners ( including farmers/ landowners) through a locally relevant integrated framework.

**Which Ecosystems/habitats Ecosystem Services are being targeted? ALL - but primarily:**

River catchment, ground and surface waters, biodiversity, ecology, AONB and food producing farmland:

- Water quality; ▪ Biodiversity; ▪ Carbon ▪ Landscape

# What's going wrong?

Fragmented approach

Complexity of Governance - single issue funding.

Overlap, duplication and competition.

Local knowledge and resource being overlooked and undervalued.

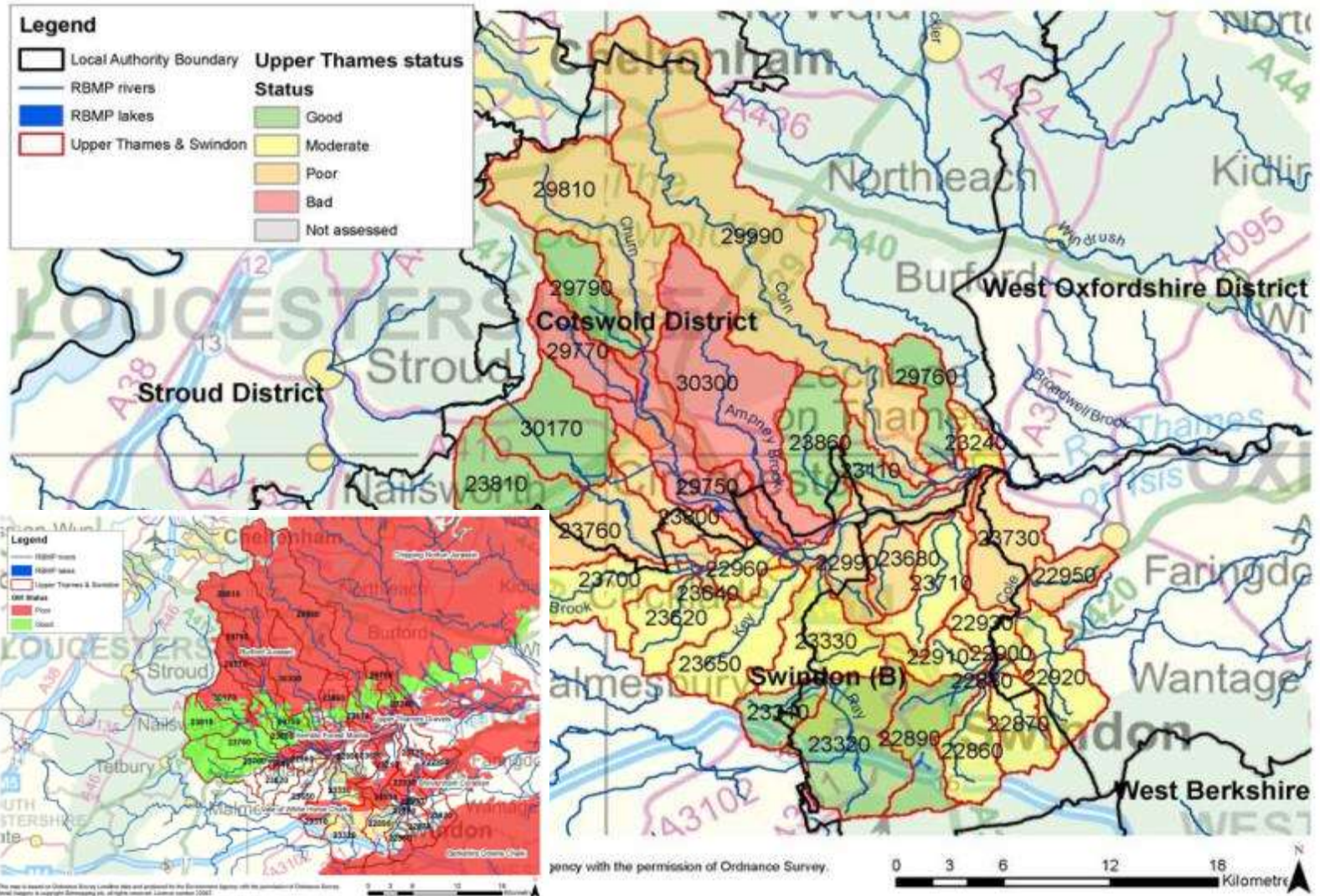
Derelict and abandoned infrastructure

No real mechanism for local input

A countryside driven by cheap food and cheap oil

For now....

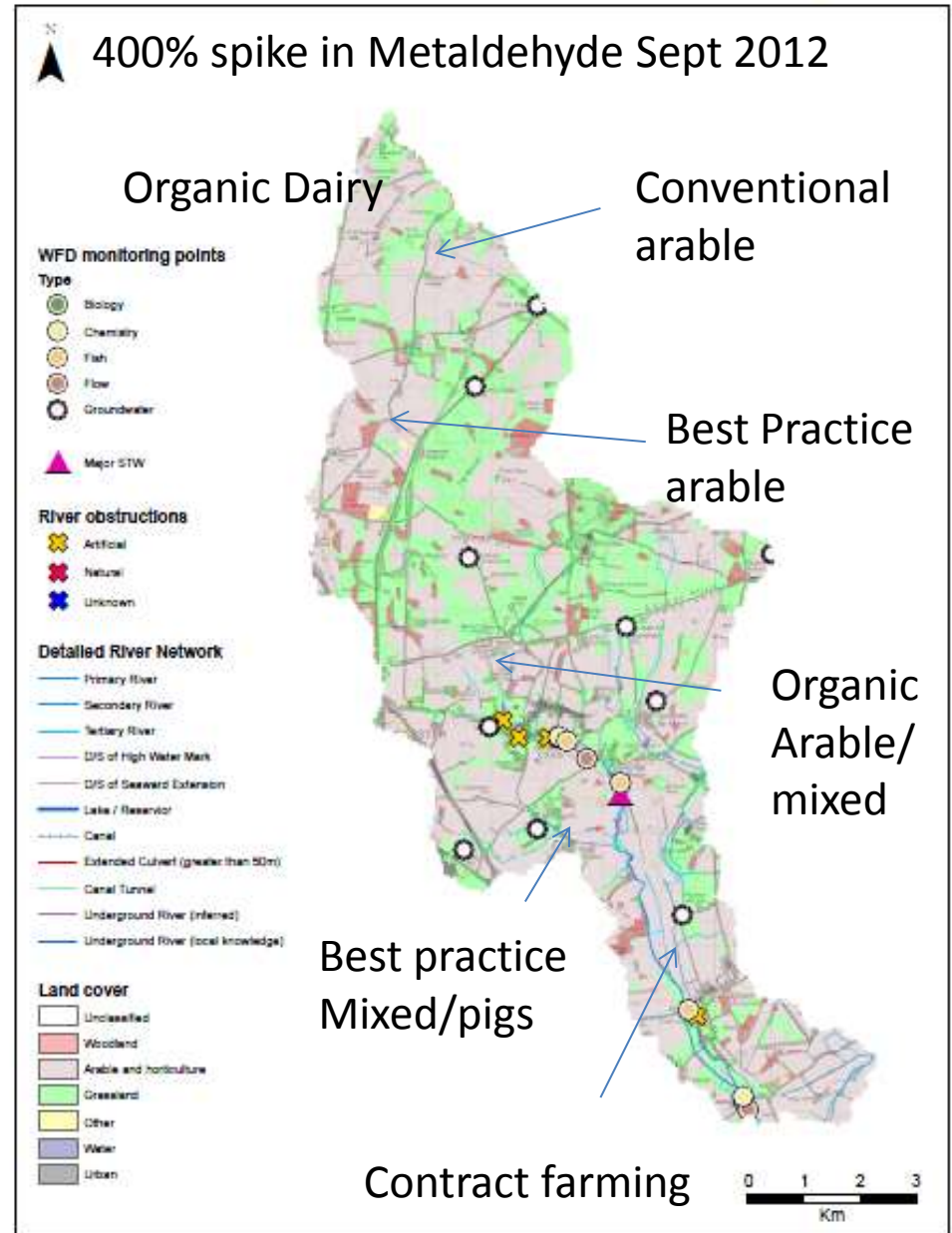
# The legacy in our catchment of cheap food – environmental cost



We could do a single issue PES

Metaldehyde

30300



### EU Biodiversity Strategy for 2020

Subsidiarity, complementarity and consistency are essential principles of the EU's approach to biodiversity. The EU Biodiversity Strategy for 2020 is designed to be implemented in a way that respects these principles and works in synergy with other EU policies and Member State policies.

The strategy will be implemented in a way that respects the principle of subsidiarity, meaning that the EU will only act where it is better placed to do so than the Member States.

The strategy will be implemented in a way that respects the principle of complementarity, meaning that the EU will complement the efforts of the Member States.

The strategy will be implemented in a way that respects the principle of consistency, meaning that the EU will work in synergy with other EU policies and Member State policies.

**Environment**

bg cs es da de et el en fr  
it lv lt hu nl pl pt ro sk  
sl fi sv

### Resource efficiency – a business imperative

The goals of the world economy and the long-term objectives of the EU are to ensure that the world's natural resources are used efficiently and sustainably.

Resource efficiency is a key to sustainable economic growth and to the well-being of our societies.

Resource efficiency is a key to sustainable economic growth and to the well-being of our societies.

Resource efficiency is a key to sustainable economic growth and to the well-being of our societies.

**Environment**

bg cs es da de et el en fr  
it lv lt hu nl pl pt ro sk  
sl fi sv

### Water Framework Directive

The EU Water Framework Directive

Member States must ensure that the water quality in their rivers and lakes is good or better.

Member States must ensure that the water quality in their rivers and lakes is good or better.

Member States must ensure that the water quality in their rivers and lakes is good or better.

**Environment**

bg cs es da de et el en fr  
it lv lt hu nl pl pt ro sk  
sl fi sv

### Nature's role in climate change

Nature and biodiversity

Member States must ensure that the water quality in their rivers and lakes is good or better.

Member States must ensure that the water quality in their rivers and lakes is good or better.

Member States must ensure that the water quality in their rivers and lakes is good or better.

**Environment**

bg cs es da de et el en fr  
it lv lt hu nl pl pt ro sk  
sl fi sv

### Sustainable consumption and production

The way we produce, use and dispose of goods is unsustainable and is rapidly depleting our planet's natural resources.

The quality of life, prosperity and economic growth depend on living within ecological limits.

The environmental, economic, social and cultural benefits of sustainable consumption and production are many and varied.

Member States must ensure that the water quality in their rivers and lakes is good or better.

**Environment**

bg cs es da de et el en fr  
it lv lt hu nl pl pt ro sk  
sl fi sv

### Horizon 2020

cleaning up the Mediterranean

**Environment**

bg cs es da de et el en fr  
it lv lt hu nl pl pt ro sk  
sl fi sv

### DG Environment

**Environment**

bg cs es da de et el en fr  
it lv lt hu nl pl pt ro sk  
sl fi sv

### Green infrastructure

**Environment**

bg cs es da de et el en fr  
it lv lt hu nl pl pt ro sk  
sl fi sv

### The EU Nitrates Directive

**Environment**

bg cs es da de et el en fr  
it lv lt hu nl pl pt ro sk  
sl fi sv

### Natura 2000

**Environment**

bg cs es da de et el en fr  
it lv lt hu nl pl pt ro sk  
sl fi sv

### Water Scarcity and Drought in the European Union

Water

Water scarcity and drought are major challenges for the European Union.

Water scarcity and drought are major challenges for the European Union.

Water scarcity and drought are major challenges for the European Union.

**Environment**

de en es fr it

### Soil – a key resource for the EU

Soil is a key resource for the EU.

Soil is a key resource for the EU.

Soil is a key resource for the EU.

**Environment**

de fr

### Cohesion policy and the environment

Cohesion policy and the environment

Cohesion policy and the environment

Cohesion policy and the environment

**Environment**

bg cs es da de et el en fr  
it lv lt hu nl pl pt ro sk  
sl fi sv

### The EU Nitrates Directive

Water

The background to the Directive

The background to the Directive

The background to the Directive

**Environment**

de en es fr it

### Natura 2000

Natura 2000 is the global network of sites designated under the EU Habitats Directive and the EU Birds Directive.

Natura 2000 is the global network of sites designated under the EU Habitats Directive and the EU Birds Directive.

Natura 2000 is the global network of sites designated under the EU Habitats Directive and the EU Birds Directive.

**Environment**

de en es fr it

Multiple strategies  
EU Directives

### MONITORING THE IMPACT OF EU BIODIVERSITY POLICY

Monitoring the impact of EU biodiversity policy

Monitoring the impact of EU biodiversity policy

Monitoring the impact of EU biodiversity policy

**Environment**

de en es fr it

### Invasive Alien Species

Invasive alien species

Invasive alien species

Invasive alien species

**Environment**

de en es fr it

### Ecosystem Goods and Services

Ecosystem goods and services

Ecosystem goods and services

Ecosystem goods and services

**Environment**

de en es fr it



# Providers/ Sellers?

- **Famers and Landowners**

Its more complicated than that – basic measures, incentives, products, schemes, projects –

In our catchment farmers and landowners are part of the team looking for solutions

## **Buyers ?**

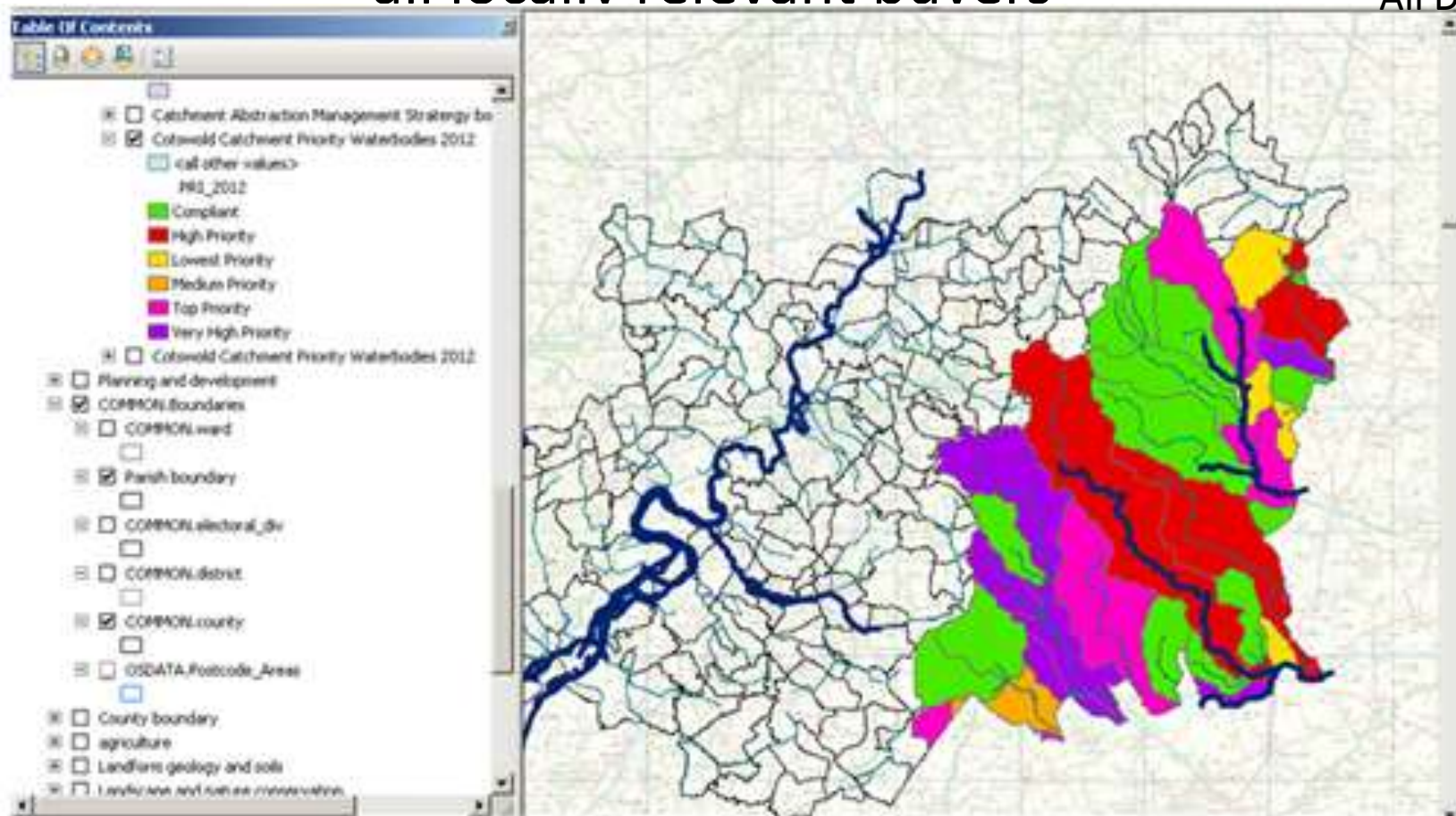
Multiple PES buyers looking at food production, land management practice, land use and landscape....we looked at them all – what drives change?

The ability to reduce risk to your farm business.



Developing Integrated approach that over layers all strategies , linking with parish planning to understand all locally relevant buvers

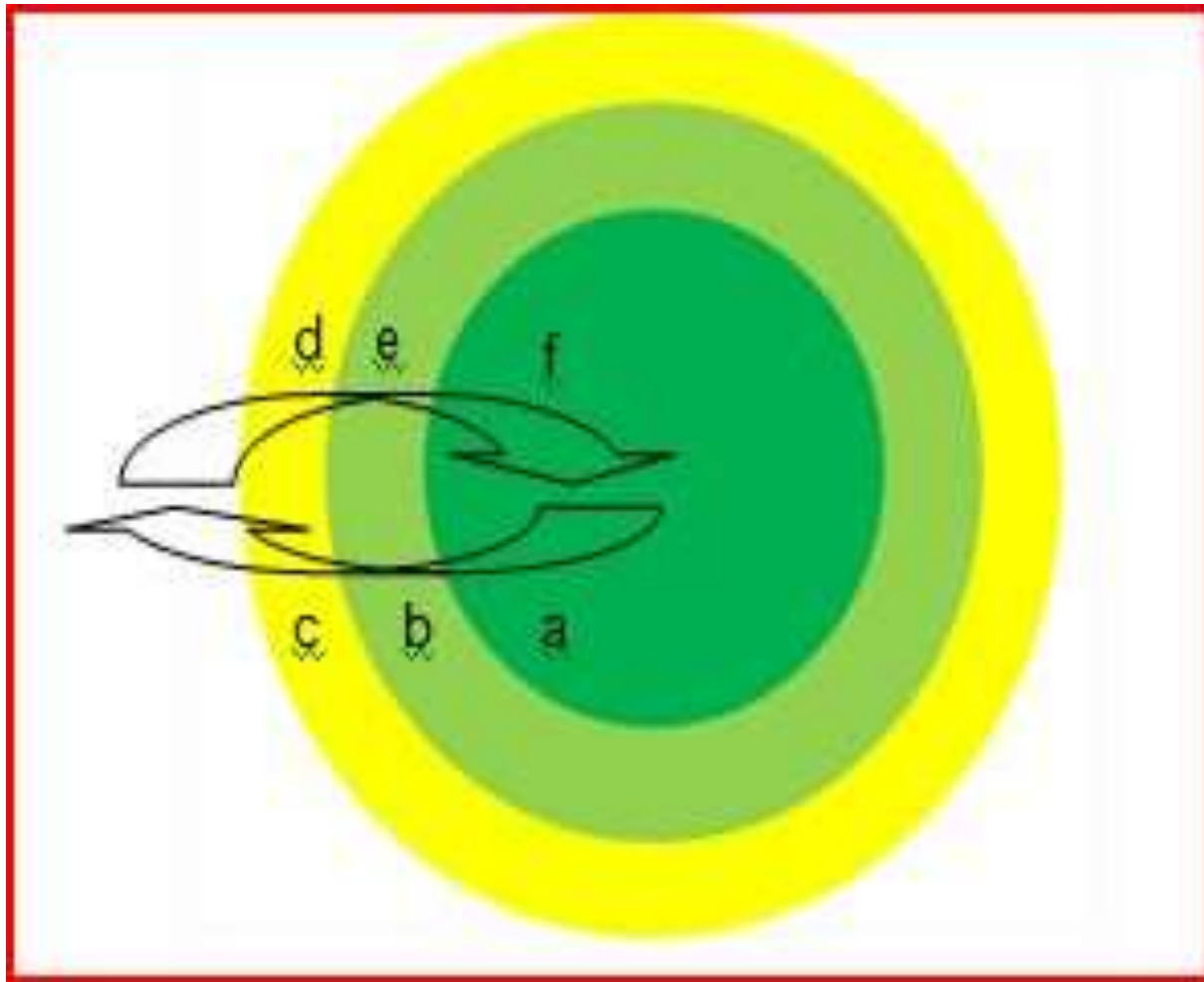
All Depts.



84 layers so far – locally relevant contacts

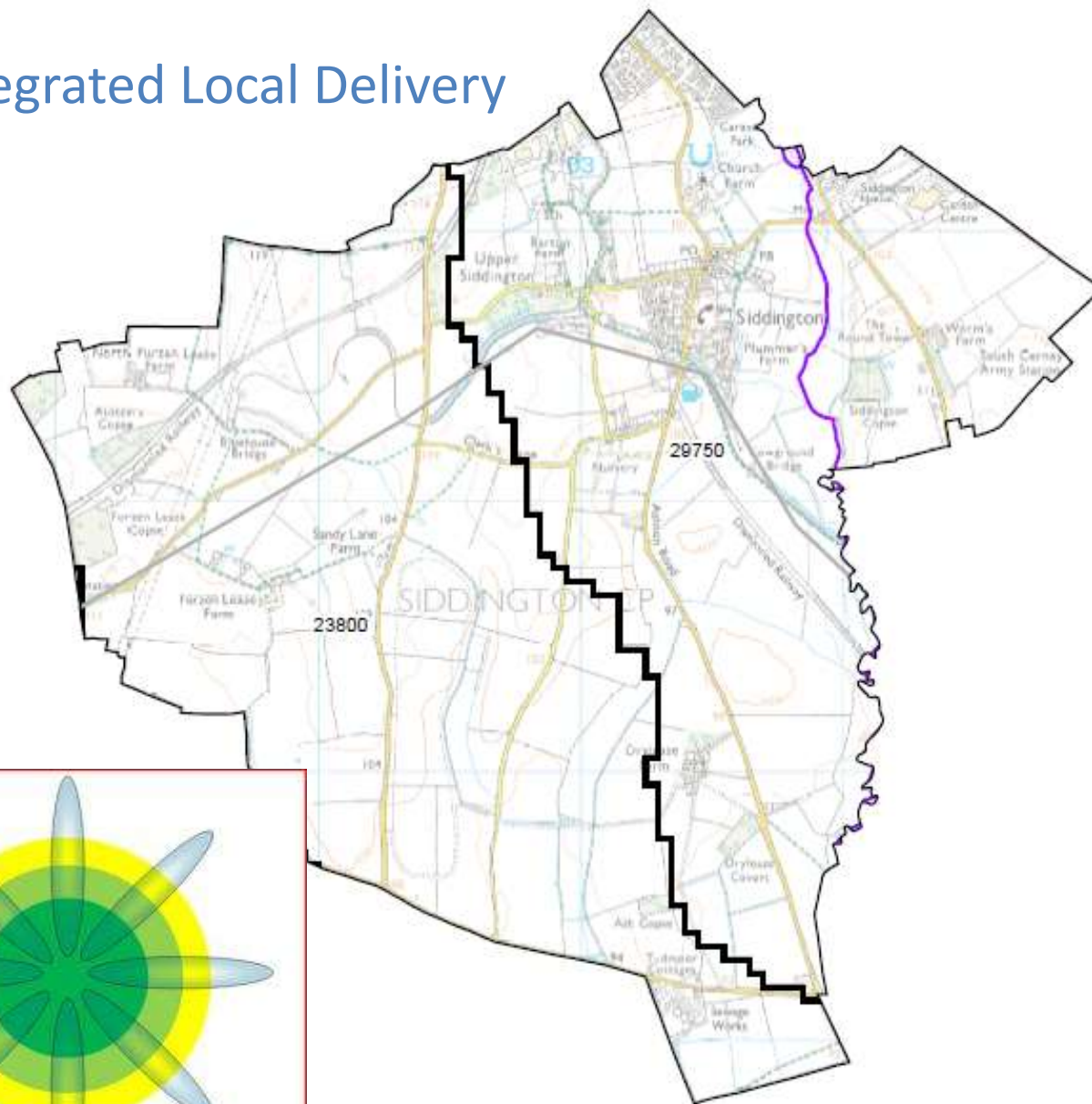
Web Portal hosted by CCRI/County Council

# Integrated Local Delivery – Step 1 scoping



Local to  
national and  
back to  
local.

# Integrated Local Delivery

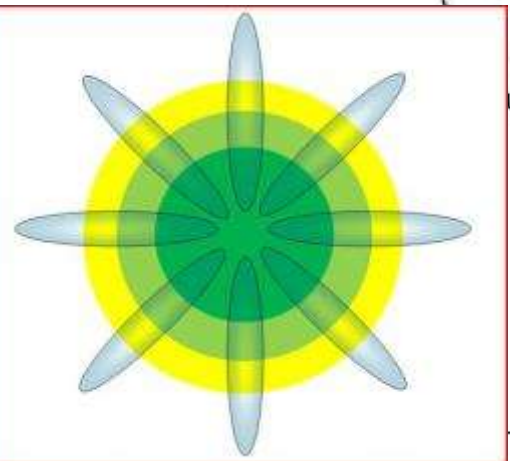
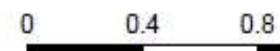


**Legend**

**WFD Rivers**

**Driving Element**

- Canal (Not applicable)
- Dissolved Oxygen
- Hydrology, Morphology
- Fish
- Invertebrates
- Invertebrates, Fish
- Phosphate, Ammonia, Invertebrates
- Phosphate, Phytoplankton
- Phytoplankton
- ▭ WFD Waterbody Boundary



# Integrated Local Delivery (ILD)

## framework

8 key themes to the approach:

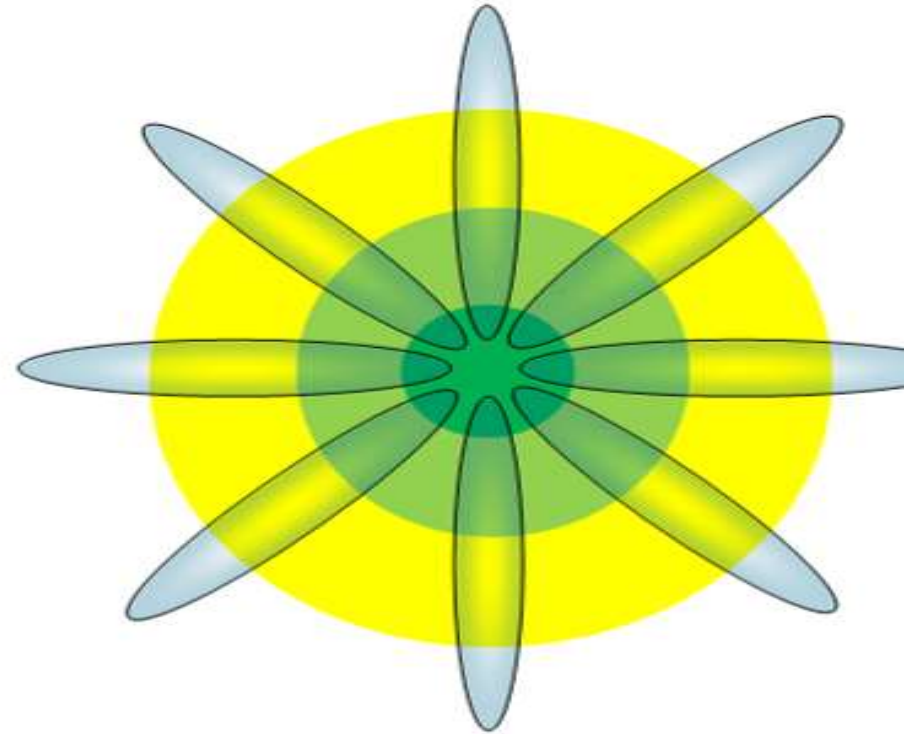
Works at lowest appropriate administrative structure;  
Clarifies statutory and non-statutory partners;  
Delivers objectives at landscape scale;  
Supports and values the farming community;  
Facilitation to develop local/ management group;  
Incorporates the Parish or Ward Council - GRCC;  
Enables inclusive multi objective delivery;  
Identifies funding opportunities, resources and match funding.

Identifying projects of multiple benefits

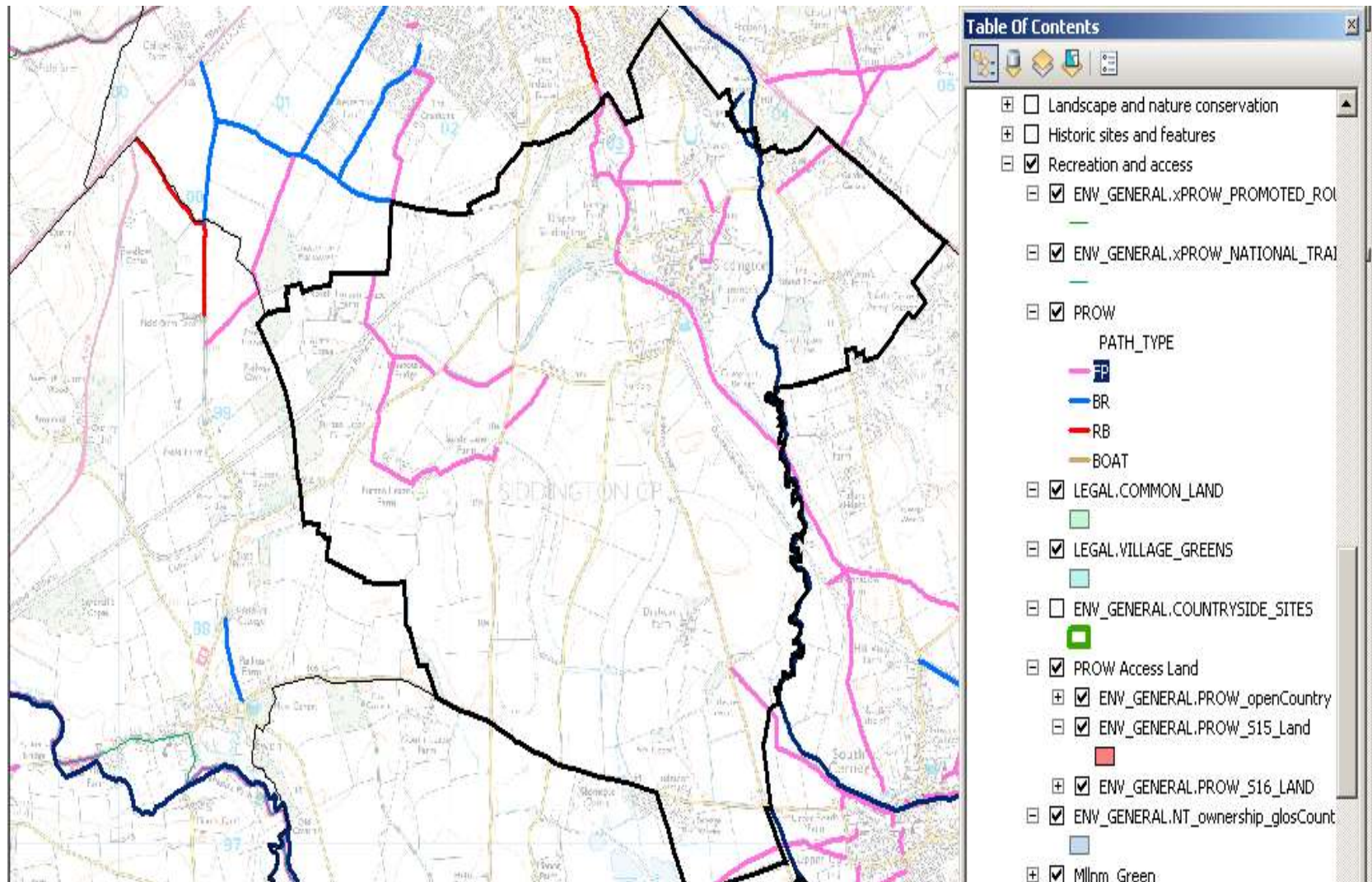
Linked to parish planning that could be funded from multiple sources

Scoping identifies locally relevant partners/ buyers/ sellers that can work together to support local delivery and come together in shared problem solving

## ILD Flower



# Portal identifies and integrate *all* environmental delivery opportunities



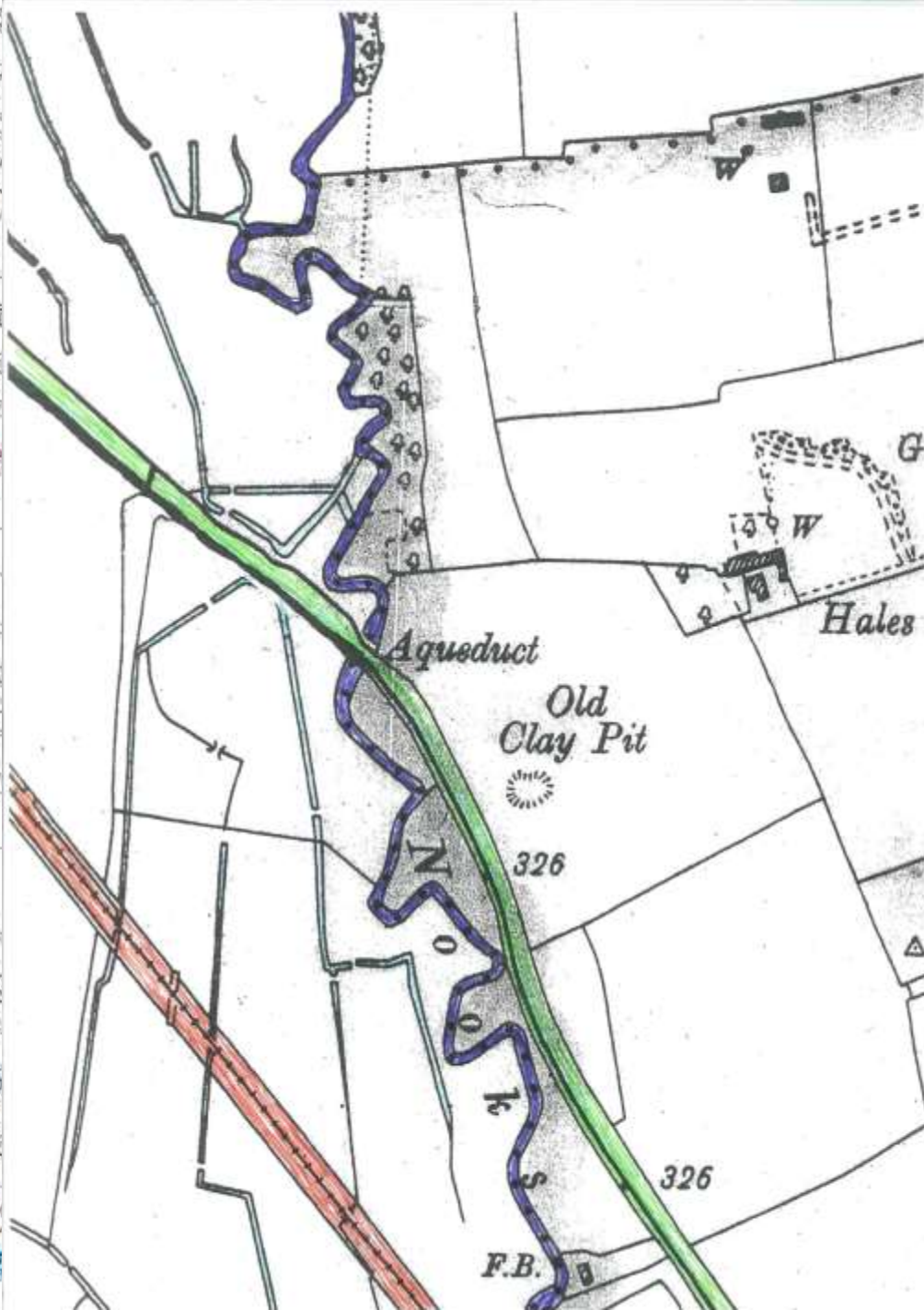
Locally relevant contacts from all organisations

Reconnecting cultural severance



- THE RIVER CHURN  
RUNS  
NORTH TO SOUTH EAST  
YELLOW
- CERNEY WICK BROOK  
RUNS  
NORTH TO SOUTH EAST  
ORANGE
- THE RIVER THAMES  
RUNS  
WEST TO SOUTH  
BLUE
- THAMES AND SEVERN  
CANAL DISUSED  
PINK
- LAND DESIGNATED FOR  
GRAVEL EXTRACTION  
BLACK

WATER COURSES  
IN THE PARISH  
AND  
SURROUNDING AREA



Local  
knowledge  
and  
resource



# Intermediaries -

Needs facilitation

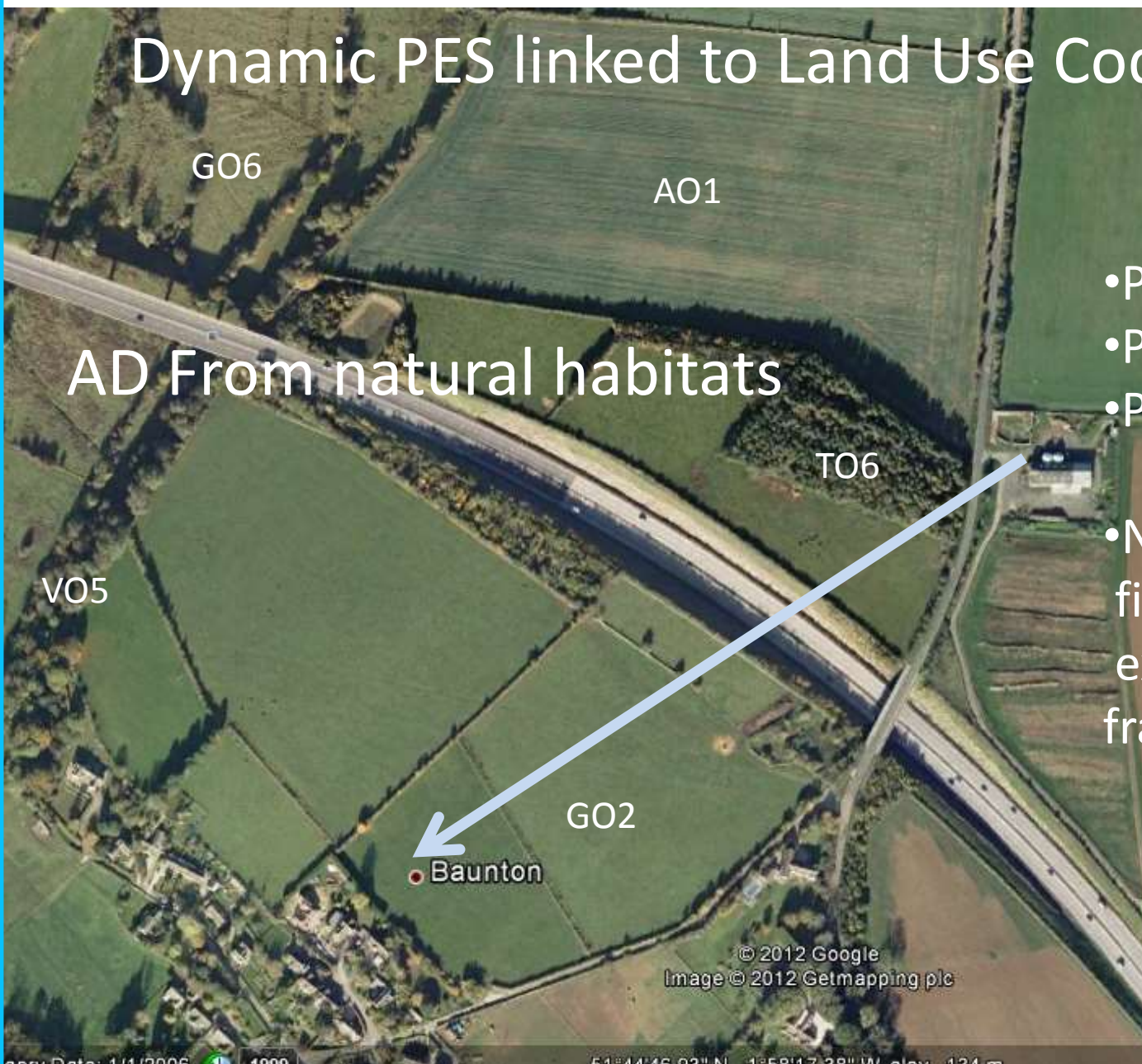
- Farming and Integrated Environmental Local Delivery (FIELD) Advisers that could be skilled from the existing Natural England Farm Environment Plan register and accredited from any organisation.

*But they must be trusted to be able to represent the farming and landowning community (who often feel marginalised and misrepresented)*



**FWAG**  
SouthWest

# Dynamic PES linked to Land Use Code?



AD From natural habitats

- Product
- Practice
- People
  
- Needs to fit with existing frameworks



Whole register of 'FEPPERS' could be upskilled to FIELD Advisers

# Products, Practice and People

- Products – Sustainable food standard? Why should our environment pay the legacy for cheap food – super markets need to be accountable
- Carbon sequestration payments, bio methane production – lets move out of the carbon era.
- Practice – building organic matter and farming with the ecosystem function not fighting against it.
- People – building resilience where farmers/landowners and communities come together to develop, fund and deliver projects of multiple environmental and socio economic benefits.

## **Payment/ Delivery mechanisms**

The transition – where we are now to where we want to be, and how do we enable main stream farming to get there

The opportunities are there, just diverse and locally appropriate

### **Legacy**

Inspiring and Enabling and embedding local action

Researched integrated local delivery framework

([www.ccri.ac.uk/ild](http://www.ccri.ac.uk/ild))

- There is funding out there from multiple sources to deliver locally appropriate solutions – but needs specialist *facilitation* to release that funding. Who will pay for that facilitation?
- *Cost benefit* of an integrated framework - when it is someone's **job** ( growth agenda?) to join it up and release those opportunities - multiple agenda's are delivered at the same time to deliver socio, economic and environmental benefit and build community resilience.
- It could save the government money and deliver more by releasing the social capital.

But we will be bidding for facilitation to a water body/parish **project template** – to multiple sources





[Jenny.phelps@gloucestershirefwag.org.uk](mailto:Jenny.phelps@gloucestershirefwag.org.uk)

FIELD ADVISER, Glos FWAG

Thank you

