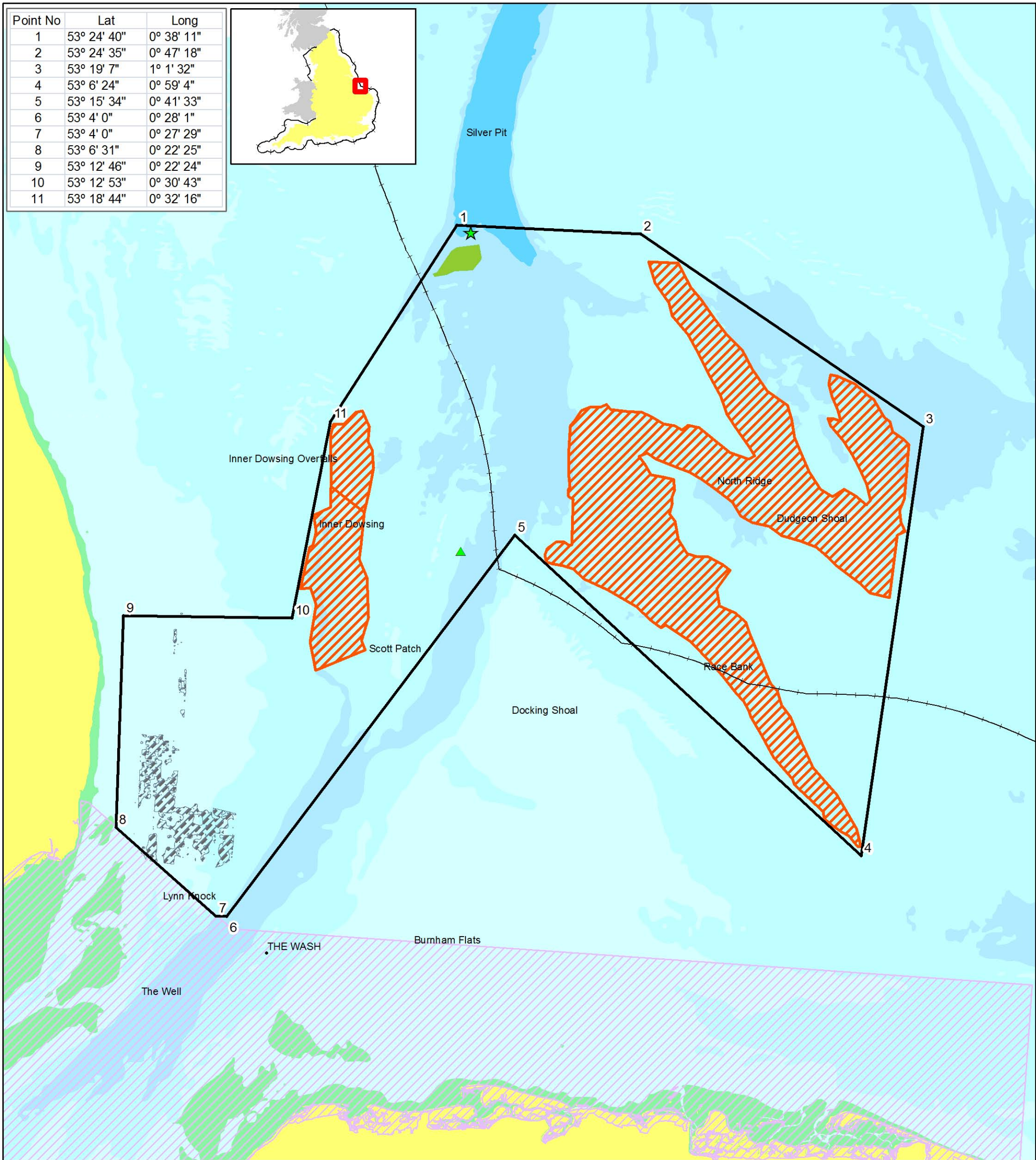
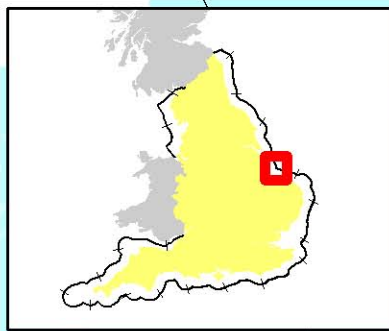


Point No	Lat	Long
1	53° 24' 40"	0° 38' 11"
2	53° 24' 35"	0° 47' 18"
3	53° 19' 7"	1° 1' 32"
4	53° 6' 24"	0° 59' 4"
5	53° 15' 34"	0° 41' 33"
6	53° 4' 0"	0° 28' 1"
7	53° 4' 0"	0° 27' 29"
8	53° 6' 31"	0° 22' 25"
9	53° 12' 46"	0° 22' 24"
10	53° 12' 53"	0° 30' 43"
11	53° 18' 44"	0° 32' 16"



candidate Special Area of Conservation  
**Inner Dowsing, Race Bank and North Ridge**

█ candidate Special Area of Conservation

▨ Special Areas of Conservation

▨ Sandbanks which are slightly covered by sea water all the time

▲ Docking Shoal Sabellaria Reef (point)

★ Silver Pit South Reef (point)

▨ Lynn Knock Sabellaria Reefs

■ Silver Pit South Sabellaria Reef

— England 12nM Territorial Seas Limit

■ Land

Depth Areas

■ Drying

■ ≤10m

■ ≤20m

■ ≤50m

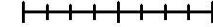
■ ≤100m

EU Site Code:  
UK0030370  
Version number:  
1.5  
Longitude:  
0° 43' 14" E  
Latitude:  
53° 15' 26" N  
Projection:  
UTM 31N (WGS84)  
Area of SAC:  
845.14 sq km  
84514.24 ha

Theme ID:  
1452092  
Grid Ref:  
TF918774  
Version:  
7  
Published:  
26/07/2010  
Plot ID:  
5

Scale 1:200,000 Map 1 of 1

0 1.25 2.5 5 Kilometers



N



Candidate Special Area of Conservation Directive 92/43/EEC  
 Submitted to the EC by the Secretary of State for Environment,  
 Food and Rural Affairs. Date: 20/08/2010  
 Depth areas © British Crown and SeaZone Solutions Limited.  
 All rights reserved. Product licence No. PGA062006.004. This  
 product has been derived in part from material obtained from the UK  
 Hydrographic Office (UKHO) with permission of the Controller  
 of Her Majesty's Stationary Office and the UKHO.  
 NOT TO BE USED FOR NAVIGATION

This map is based upon Ordnance Survey material with permission  
 of Ordnance Survey on behalf of Her Majesty's Stationary Office  
 © Crown copyright. All rights reserved. Unauthorised reproduction  
 infringes Crown copyright and may lead to prosecution or civil  
 proceedings. Licence number 100022021.2010