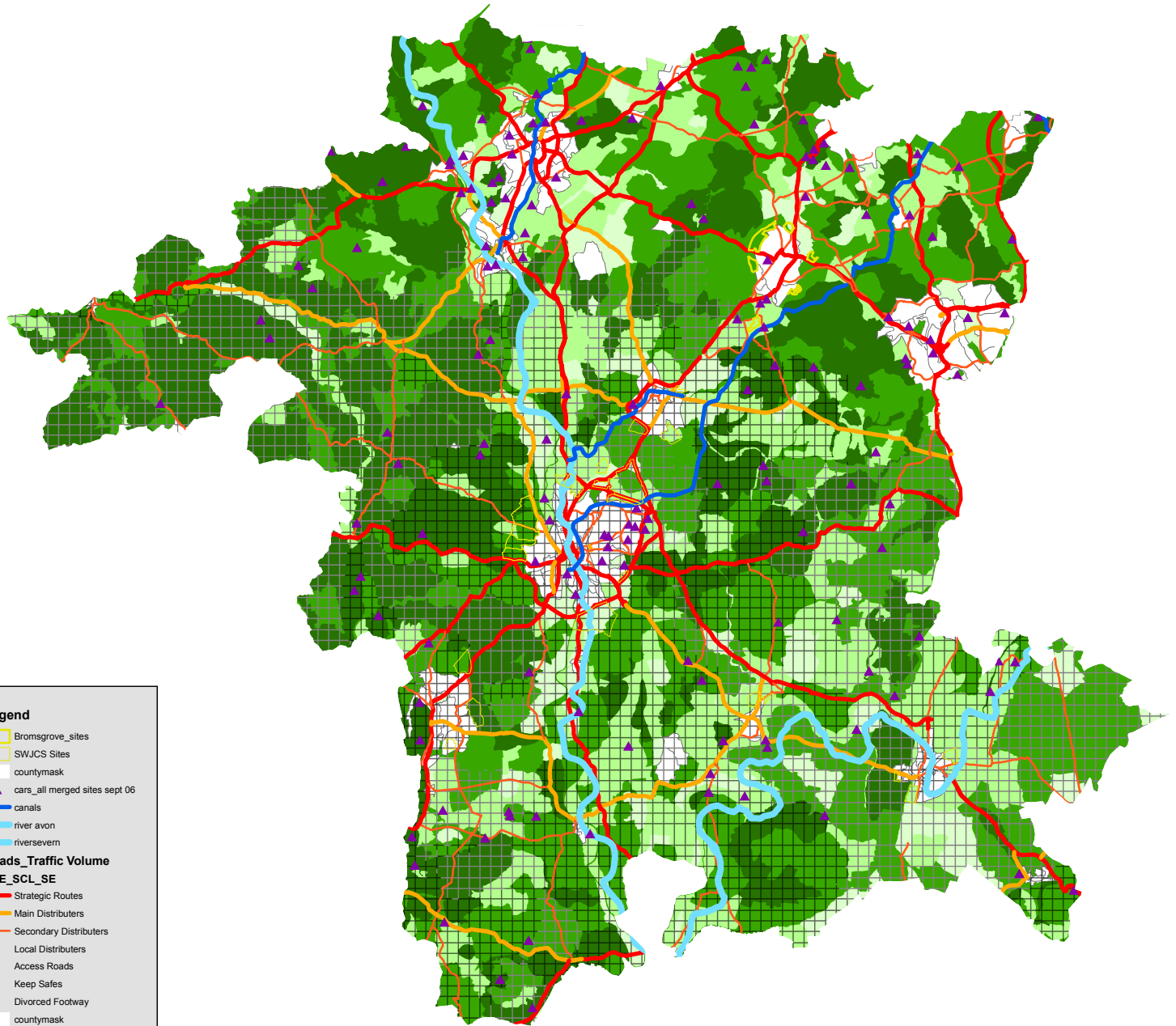


N

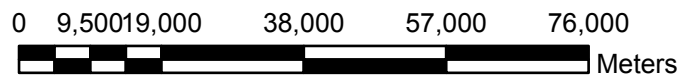


Legend

- Bromsgrove_sites
- SWJCS Sites
- countymask
- cars_all merged sites sept 06
- canals
- river avon
- riversevern
- Roads_Traffic Volume**
- RSE_SCL_SE**
- Strategic Routes
- Main Distributers
- Secondary Distributers
- Local Distributers
- Access Roads
- Keep Safes
- Divorced Footway
- countymask
- comb_scoreCopy**
- wtd_sum**
- Low
- Good
- High
- comb_scoreCopy**
- wtd_sum**
- Moderate -
- Moderate

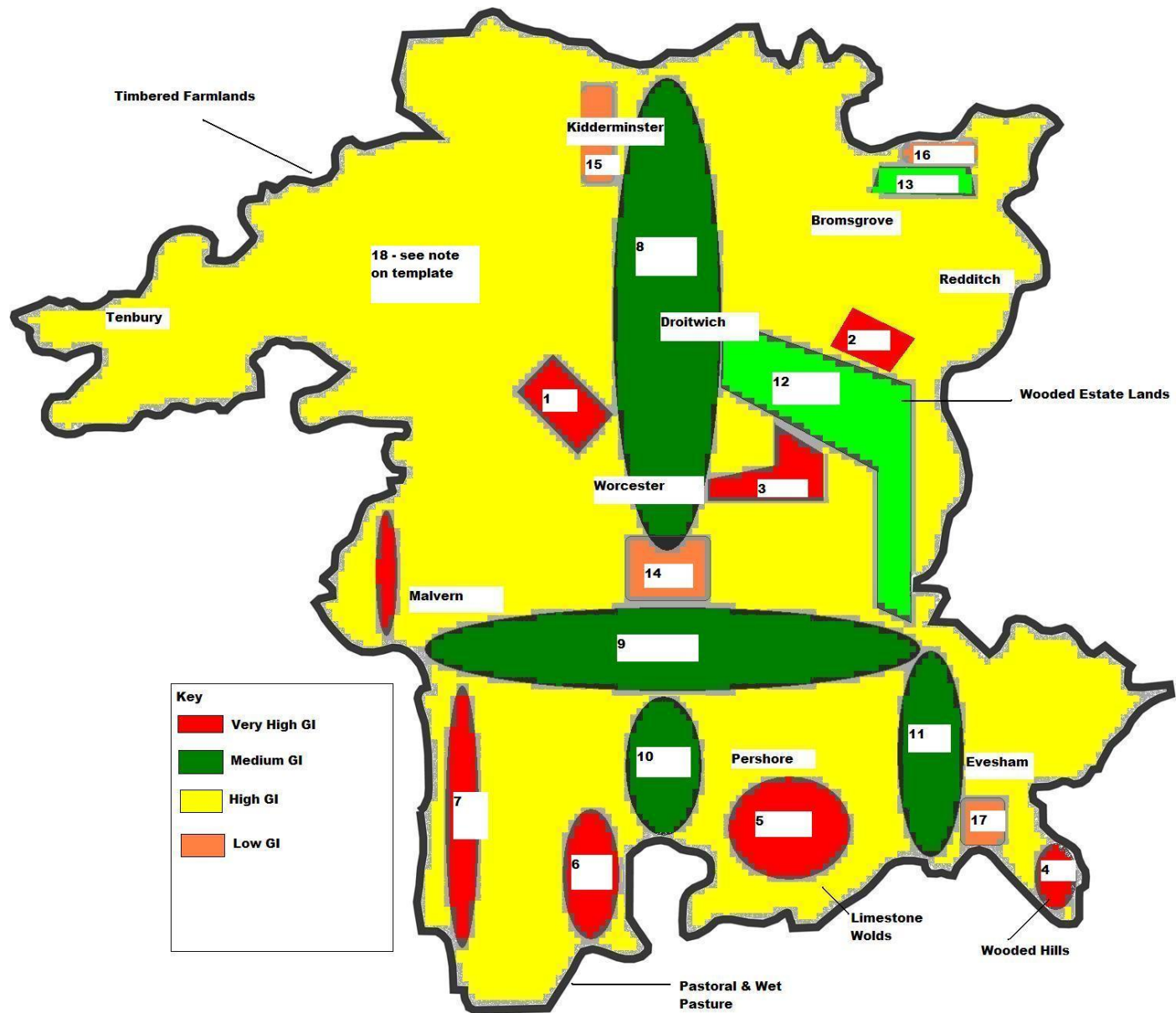


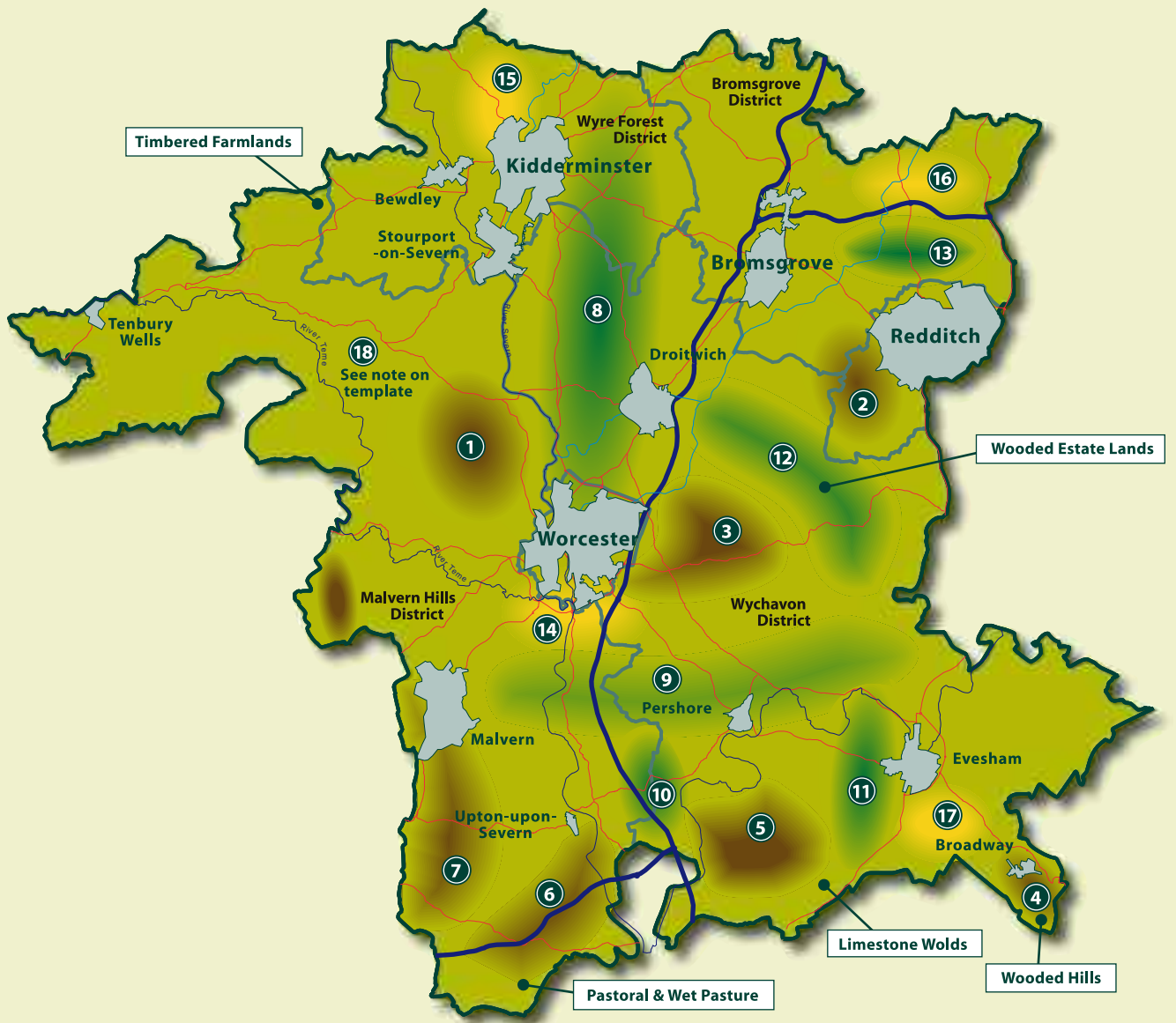
County Hall
Spetchley Road
Worcester
WR5 2NP



Merged LCA, Biodiversity and HE Basemap

© Crown copyright. All rights reserved. Worcester
County Council 100015914.
For reference purposes only.
No further copies may be made.





Worcestershire Sub Regional Green Infrastructure Framework

Draft Environmental Character Areas Map – Template

Following on from our meeting and the discussions regarding a proposed Environmental Character Areas Map please see below a template for input/comments/suggestions.

Each theme lead or specialist/stakeholder to provide input for the accompanying map and proposed character areas comments to be returned by **Monday the 18th of January 2010.**

The requested format or consideration for contributions is as below:

- Whilst it is recognised that the considerations for each character area may differ, for consistency it is requested that comments are as succinct as possible.
- The character areas have been numbered for ease of identification but this doesn't infer a hierarchy.

<p>Question 1: Are you in agreement on the broad character areas that have been identified. The character areas as discussed at the meeting have been identified in relation to the draft integrated map. These are broad areas for strategic interventions and would (in terms of layers) sit above the integrate map and lower layers.</p>	<p>Yes/No:</p> <p>Comments:</p>
<p>Question 1a: Character area 18 refers to the yellow shaded area (High GI). Due to the level of coverage, in your opinion which approach is best adopted for identifying these areas i.e. North West, South, South East or perhaps by District?</p>	<p>Geographical: Yes/No</p> <p>Comments</p> <p>Districts: Yes/No</p> <p>Comments</p>
<p>Question 2: Suggestions for naming of these areas within a Worcestershire context i.e. Severn Corridor North, East/West corridor etc (trying to reflect upon the landscape character and ecological profile terminologies for consistency).</p>	<p>Character Area</p> <p>1</p> <p>2</p> <p>3</p> <p>4</p> <p>5</p> <p>6</p> <p>7</p> <p>8</p> <p>9</p> <p>10</p> <p>11</p> <p>12</p> <p>13</p> <p>14</p> <p>15</p> <p>16</p> <p>17</p> <p>18</p>

<p>Question 2b: Consideration of the general approach for each character area i.e. enhancement, protection, creation at a broad strategic scale. However individual site characteristics will leave this open to further interpretation at a masterplanning level.</p>	Character Area	Appraisal
	1	
	2	
	3	
	4	
	5	
	6	
	7	
	8	
	9	
	10	
	11	
	12	
	13	
	14	
	15	
	16	
	17	
18		
<p>Question 3: Within each character area draft primary headline objectives for each within each theme i.e. Landscape, Biodiversity, Historic Environment. While the character areas will cross a number of differing areas key is to draw out the main emphasis from each of these.</p>	Character Area	Objectives
	1	
	2	
	3	
	4	
	5	
	6	
	7	
	8	
	9	
	10	
	11	
	12	
	13	
	14	
	15	
	16	
	17	
18		