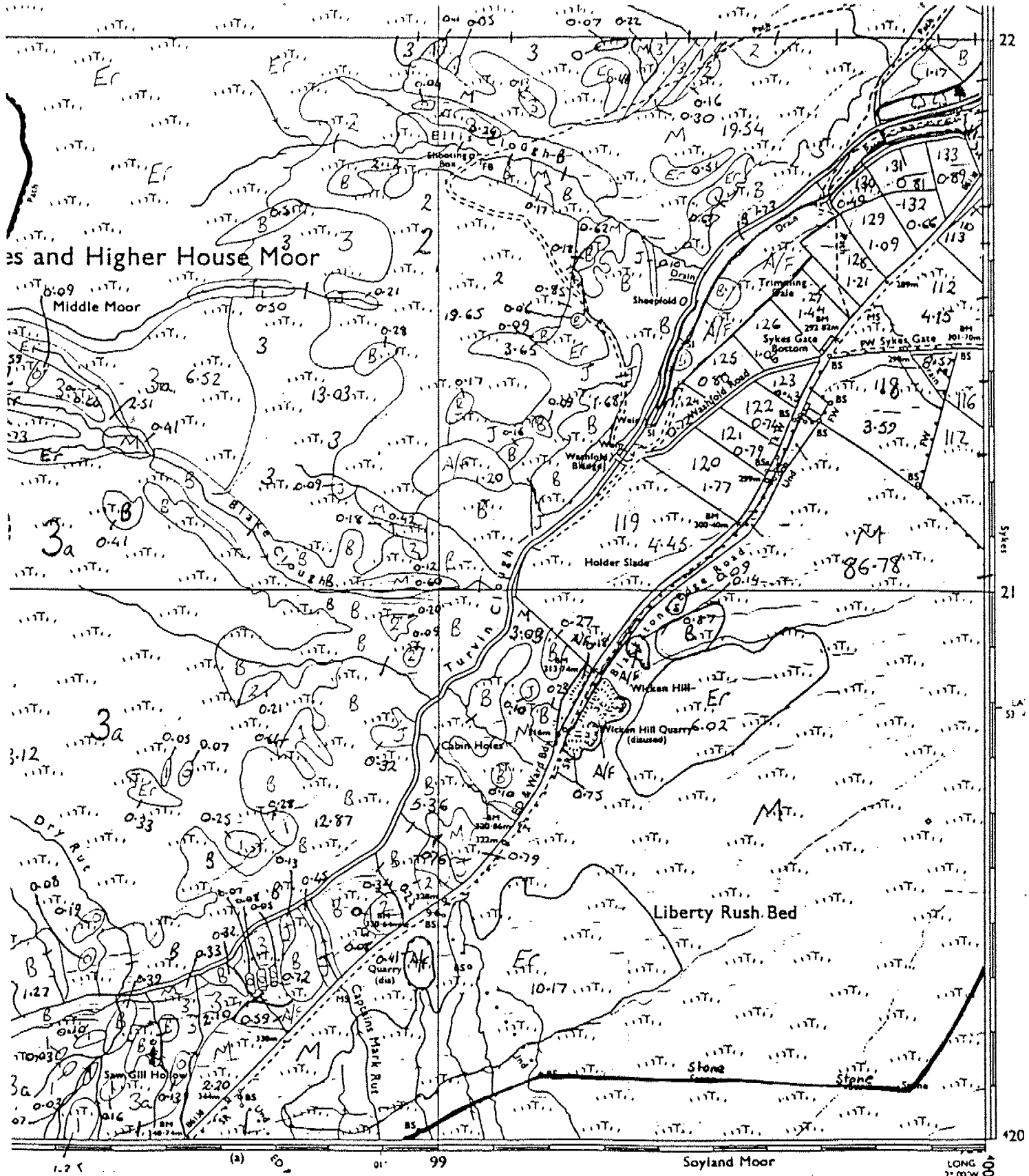
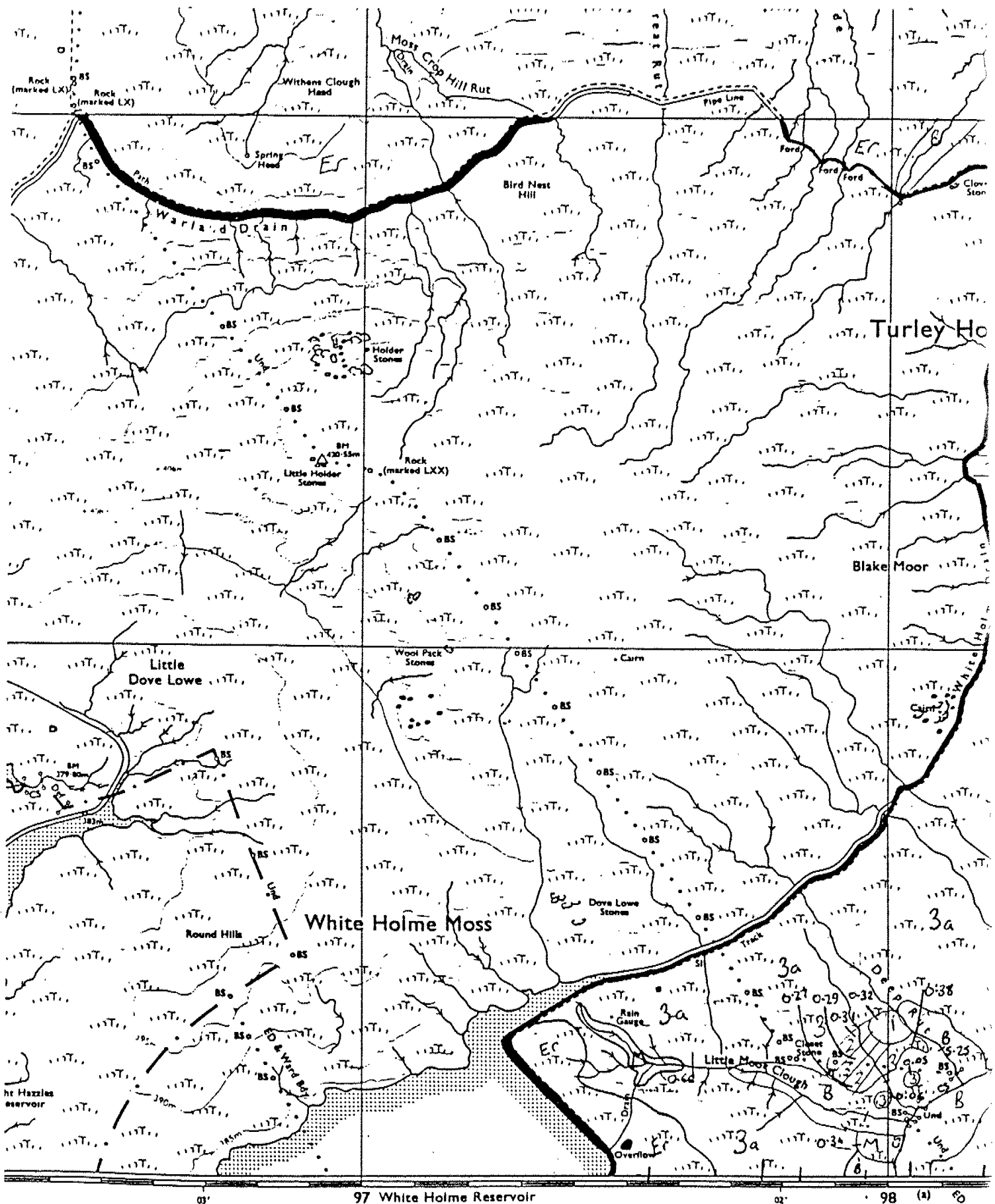


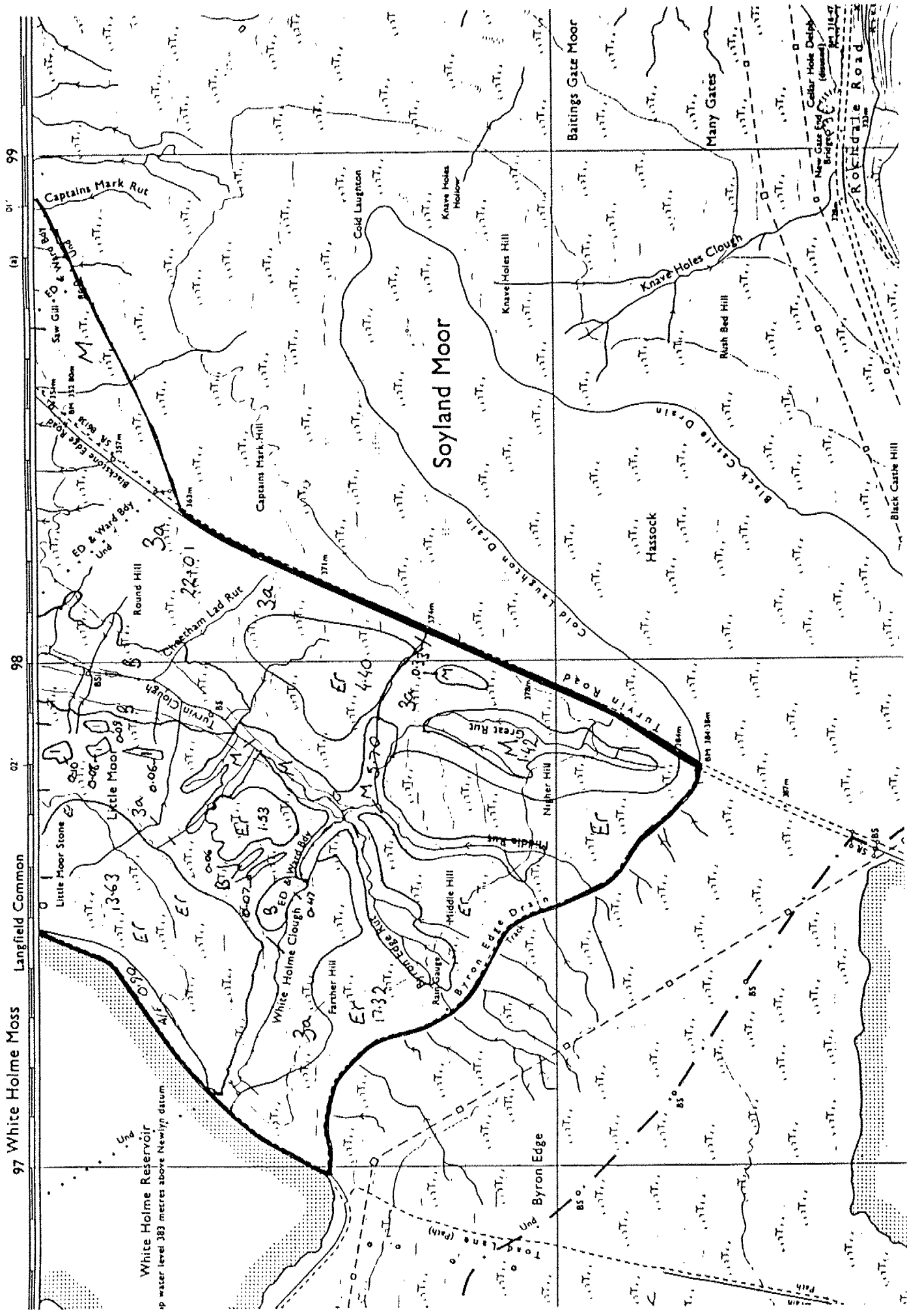
Map 3E. Withens Clough (Turvin Clough)



LONG 2° 00' W

Map 3F. Withens Clough (Turley Holes Moor and north White Holme Moss)





97 White Holme Moss Langfield Common 98 02' 99

White Holme Reservoir
 water level 383 metres above Newlyn datum

Soyland Moor

Captains Mark Rut

White Holme Clough

Baitings Gate Moor

Many Gates

Knave Holes Clough

Cellar Hole Dully
 (disused)

Rockdale Road

Black Carle Hill

Round Hill

Little Moor Stone

Little Moor

White Holme Moss

White Holme Clough

White Holme Moss

White Holme Moss

White Holme Moss

White Holme Moss

White Holme Moss

White Holme Moss

White Holme Moss

White Holme Moss

White Holme Moss

White Holme Moss

White Holme Moss

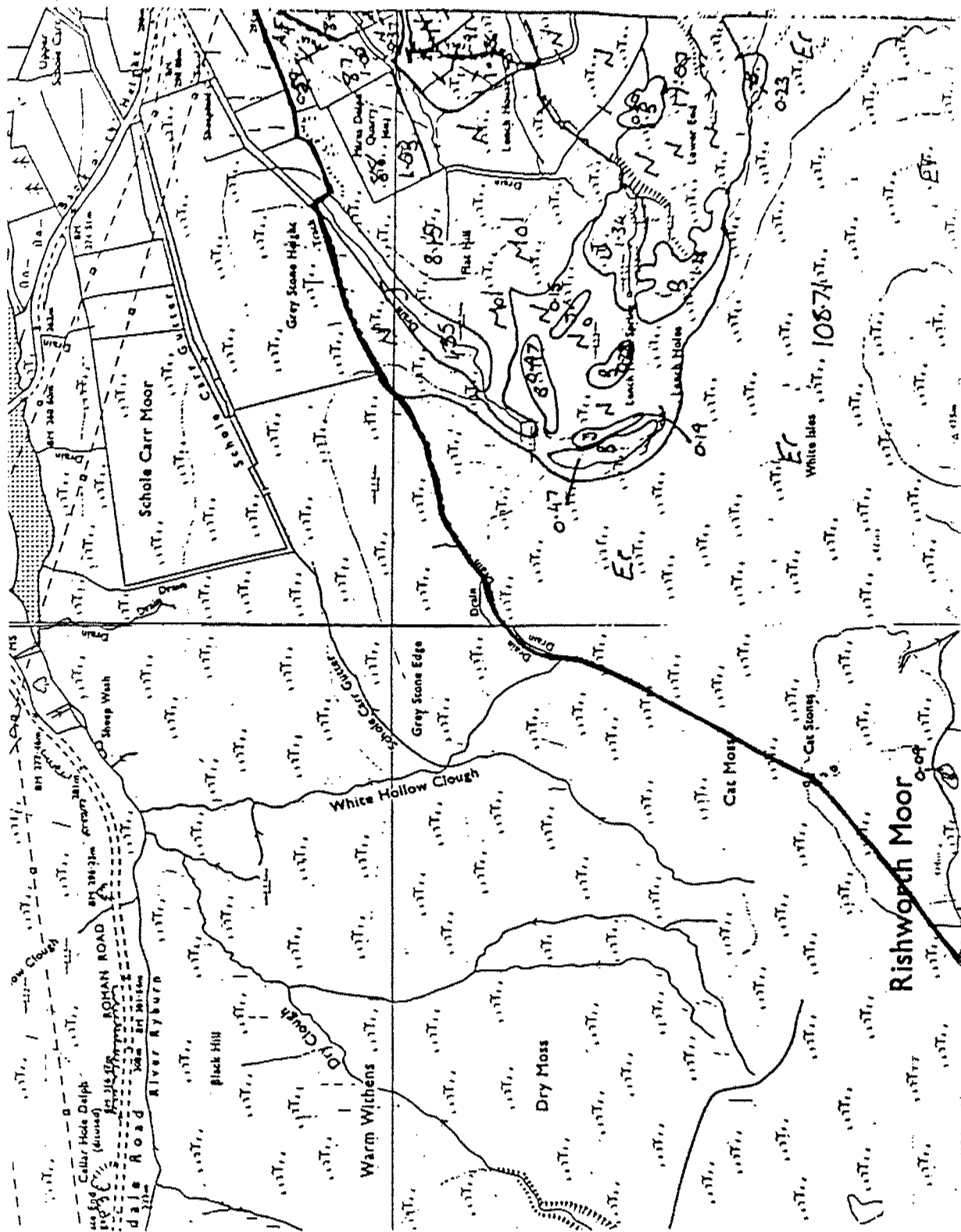
White Holme Moss

White Holme Moss

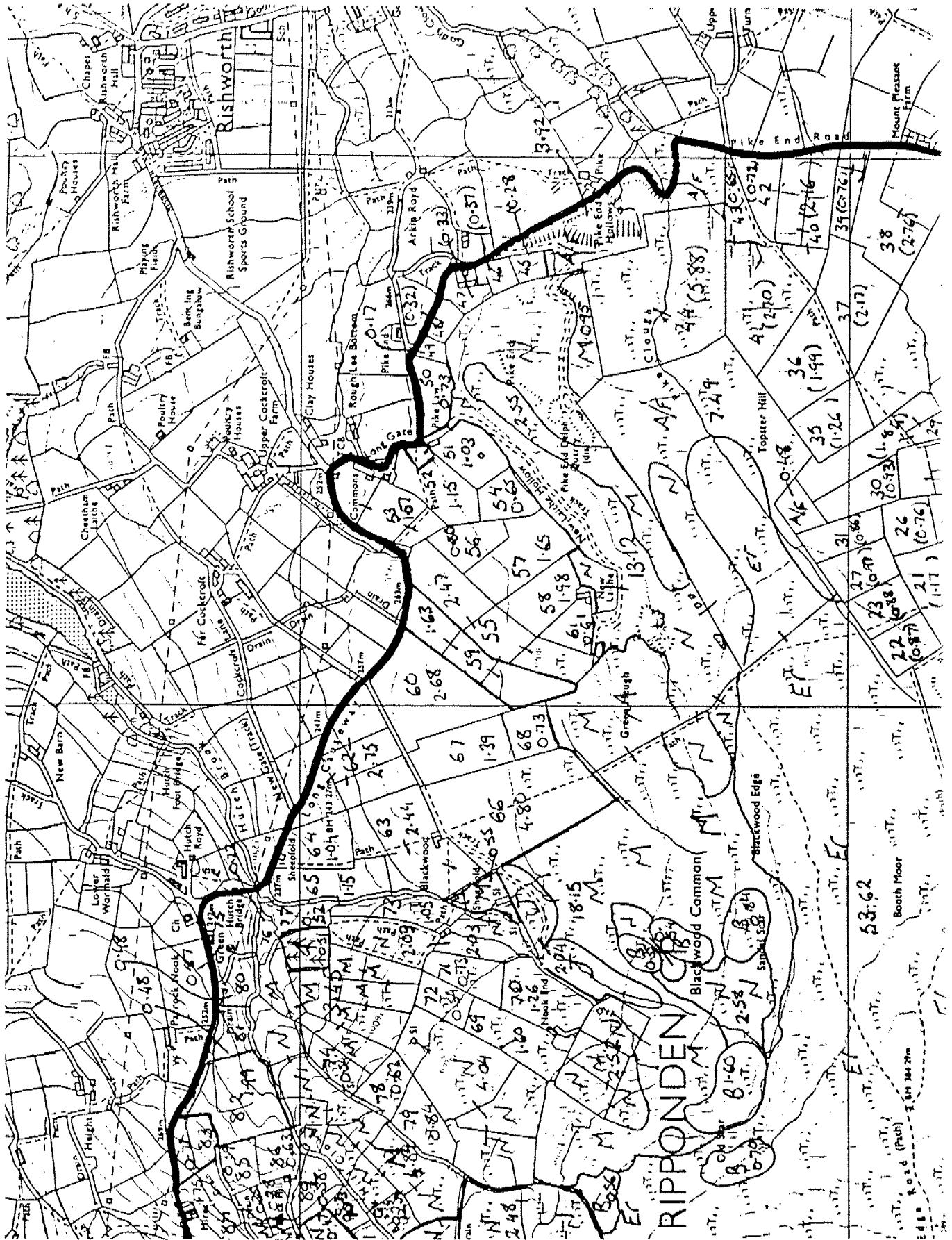
White Holme Moss

White Holme Moss

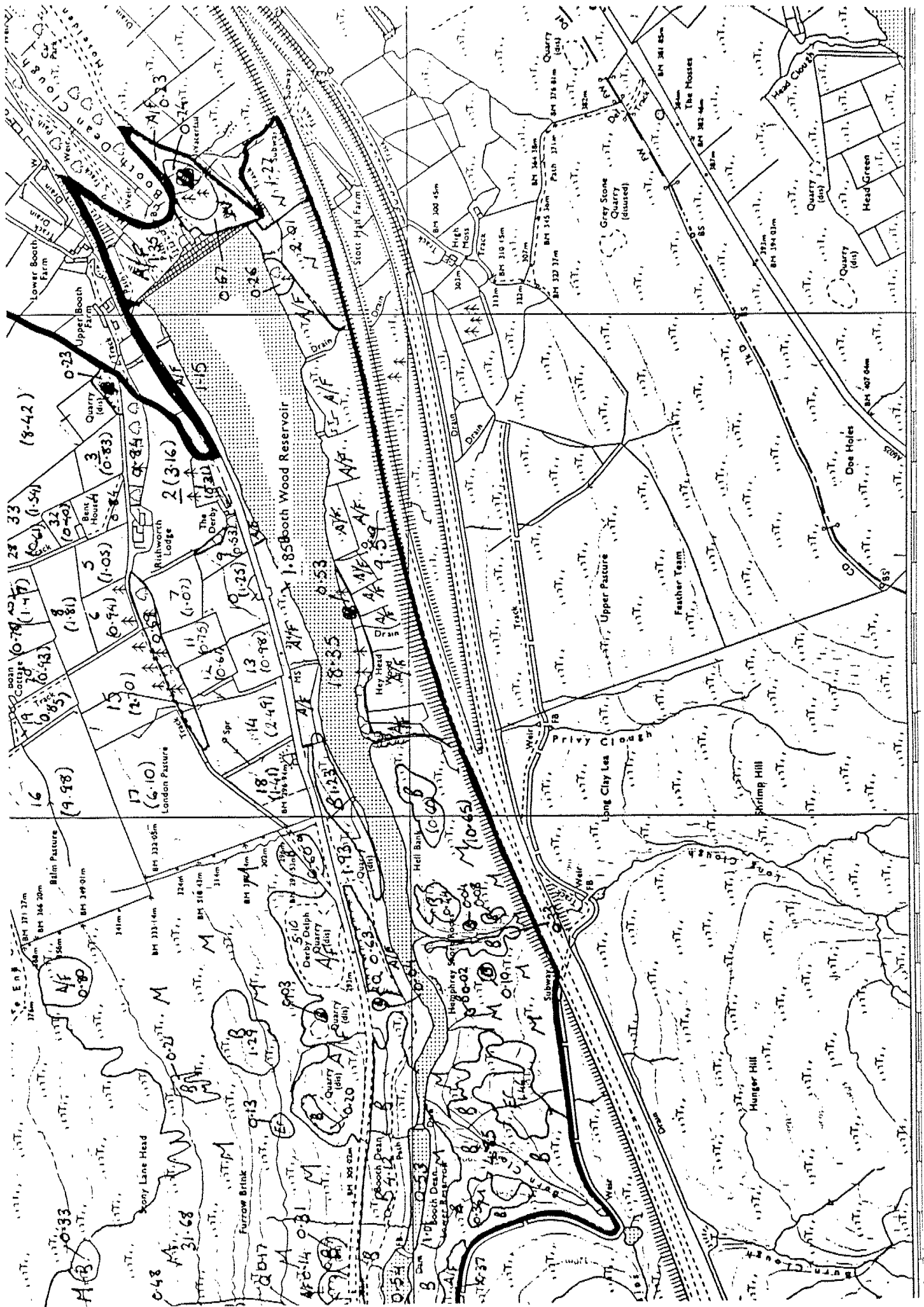
White Holme Moss



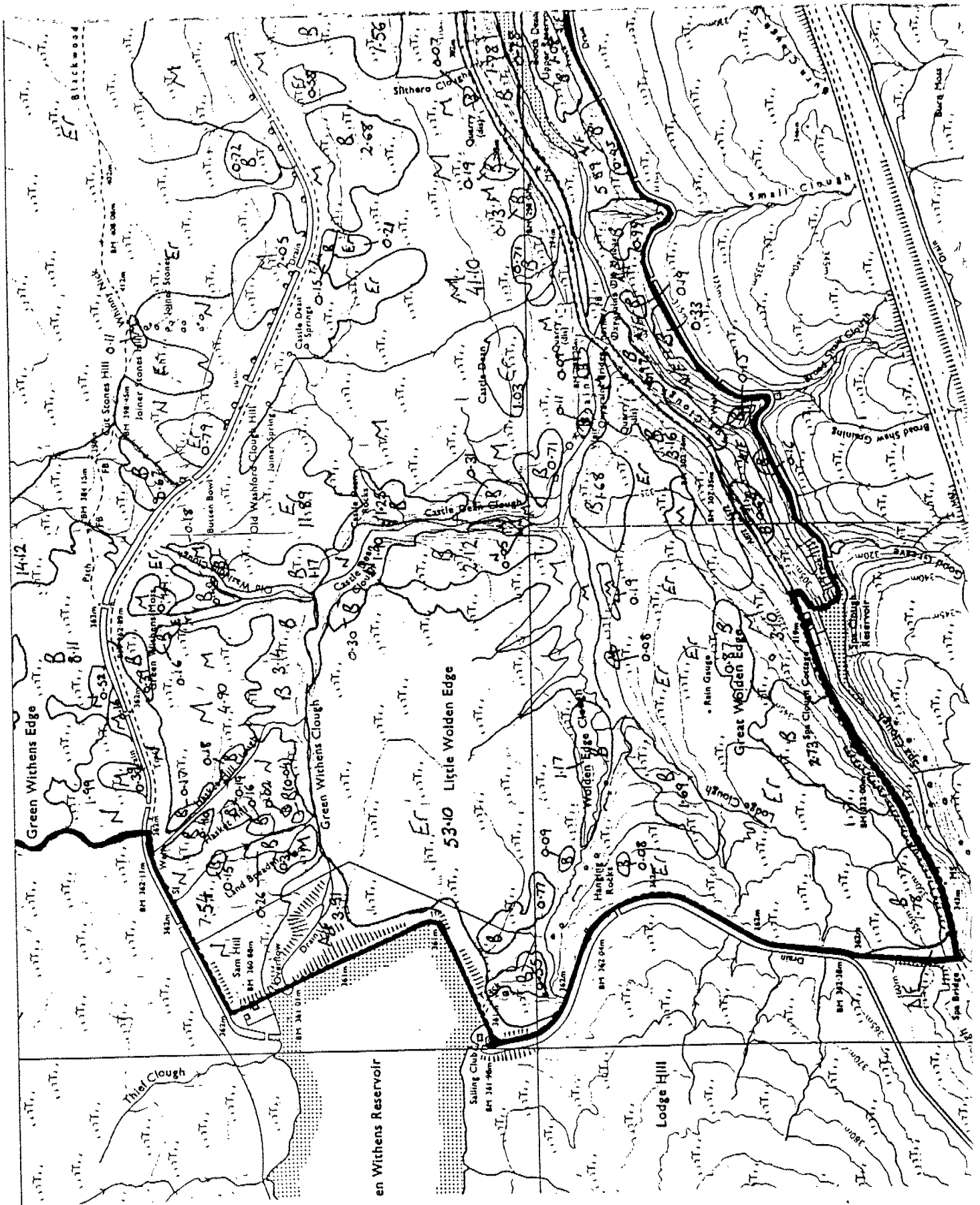
Map 4B. Rishworth (north-east)



Map 4C. Rishworth (south-east)



Map 4D. Rishworth (south-west)

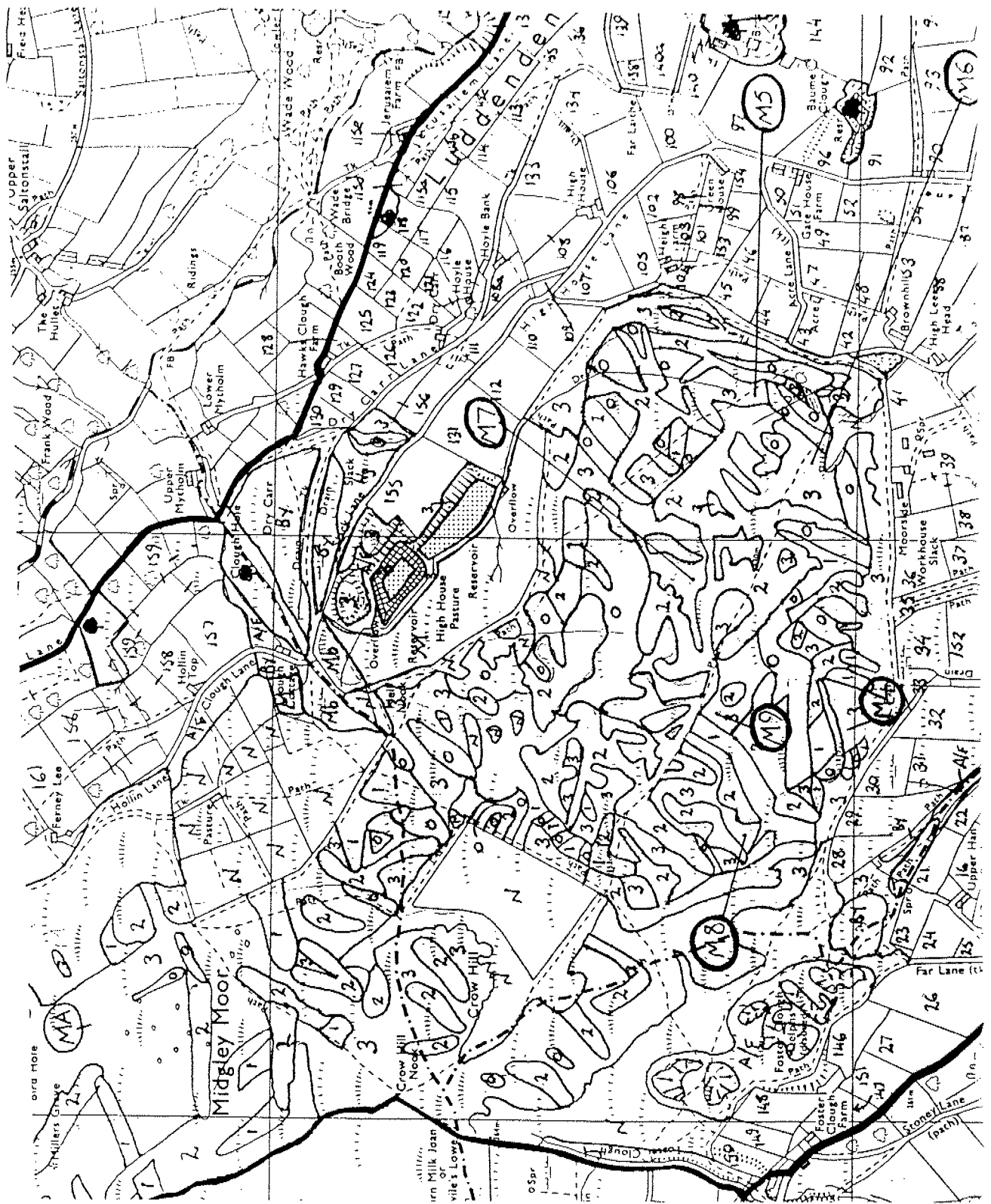


en Withens Reservoir

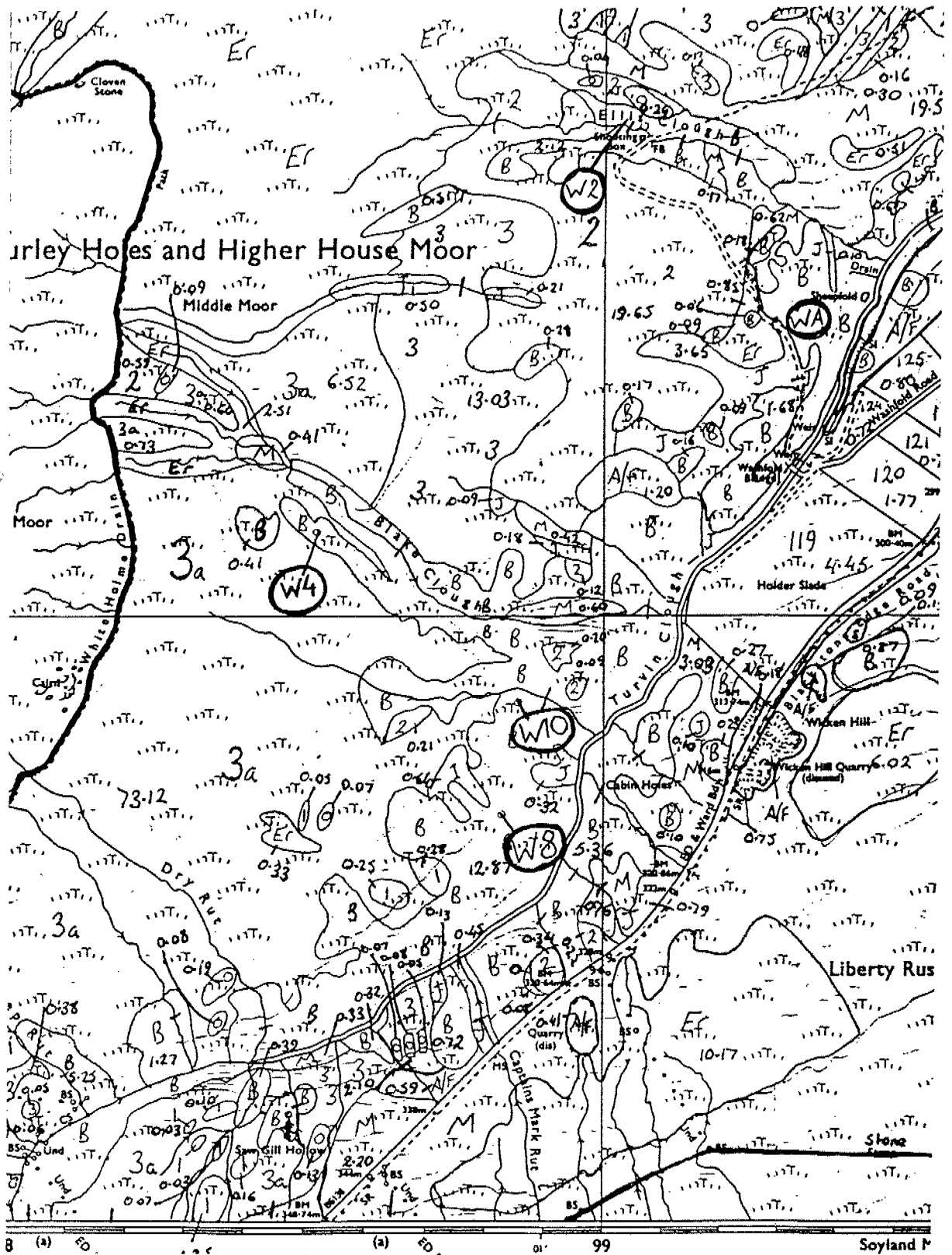
5310 Little Wolden Edge

Lodge Hill

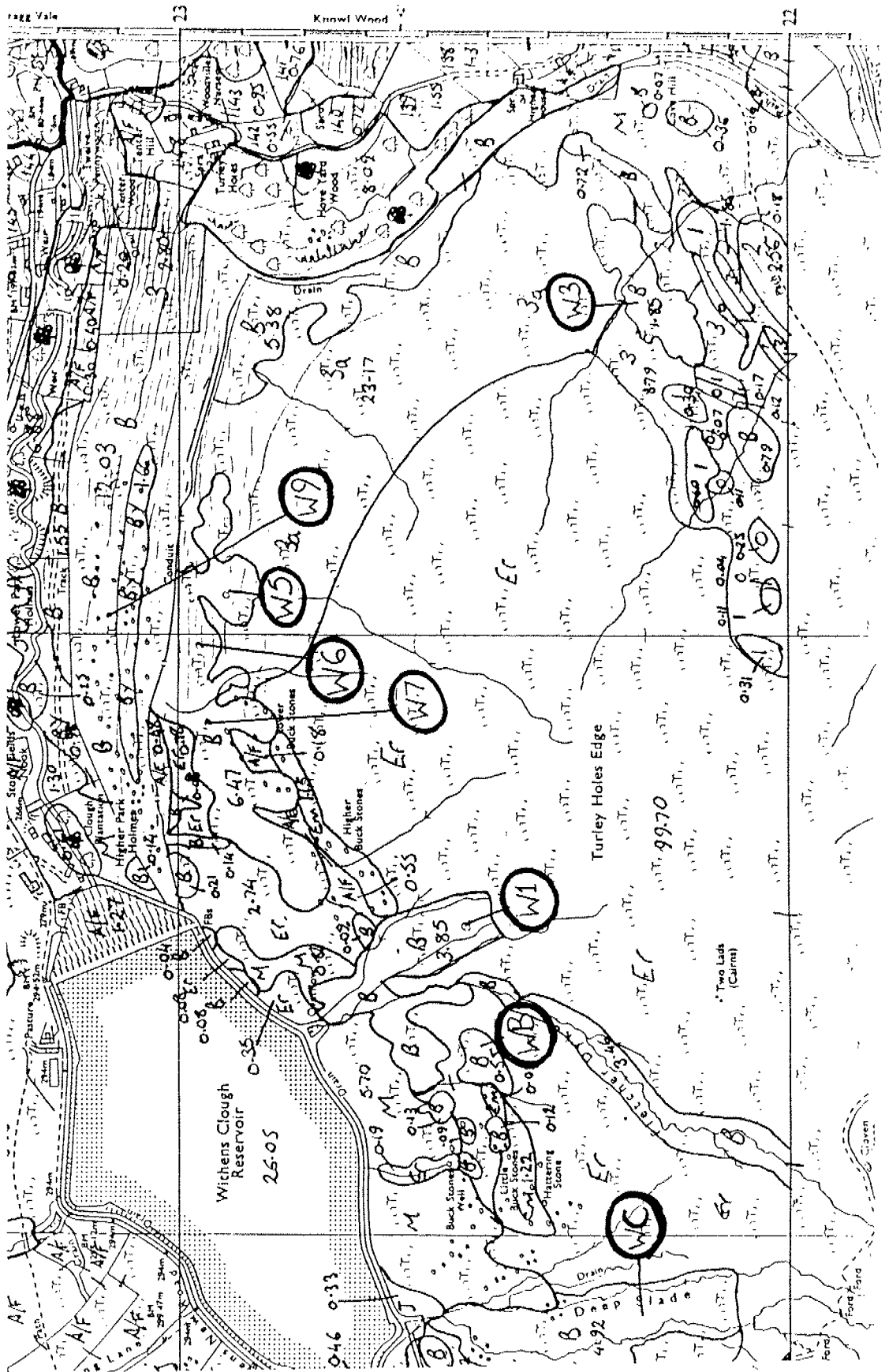
Map 5. Nest sites on Midgley Moor



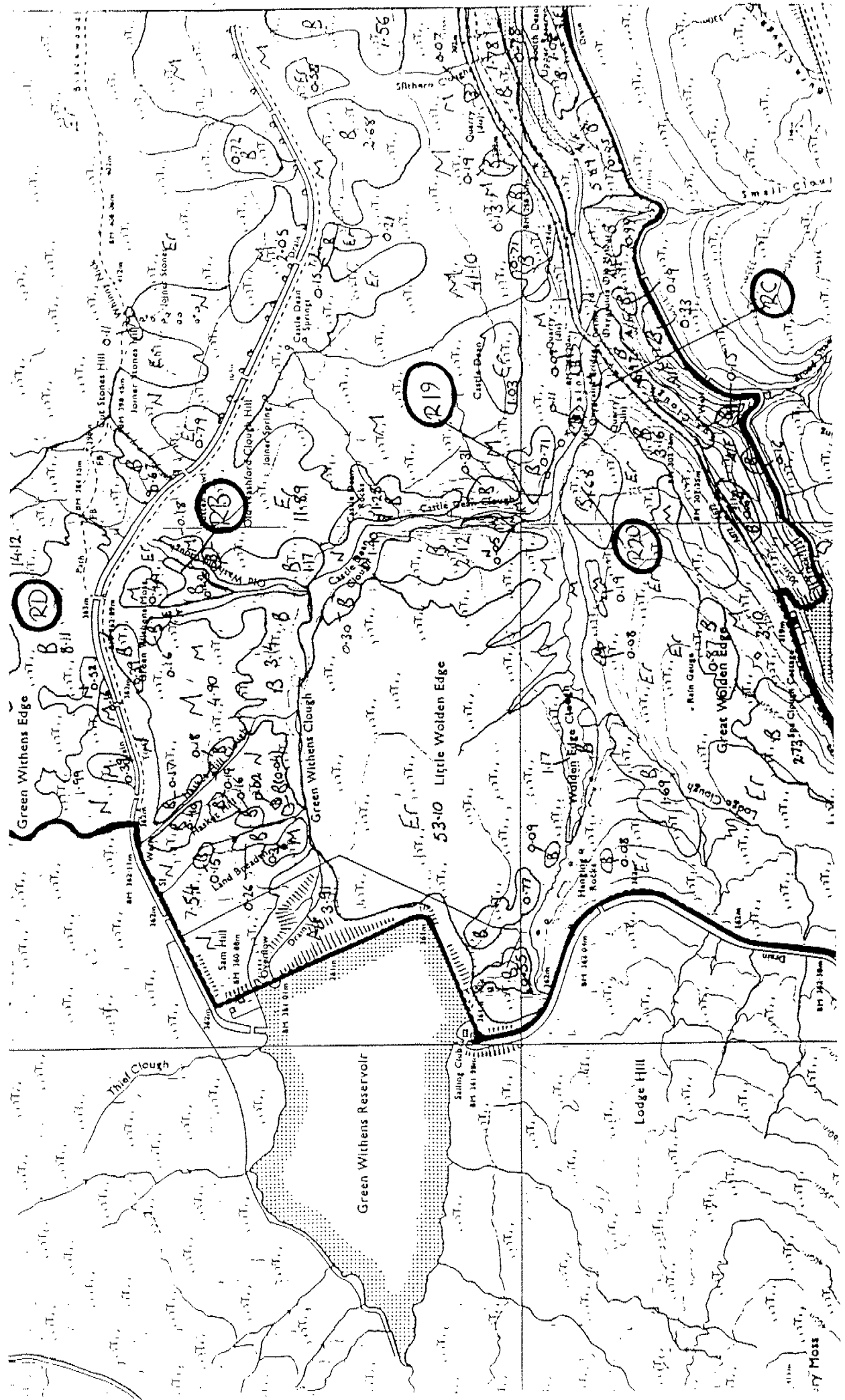
Map 6A. Nest sites in Turvin Clough (Withens Clough study area)



Map 6B. Nest sites in Withens Clough



Map 7A. Nest sites in south-west Rishworth



Map 7B. Nest sites in west Rishworth

