



A clear solution for farmers

CATCHMENT SENSITIVE FARMING

Priority Catchment Targeting Summary March 2011 – March 2014

River Basin District: Humber

Catchment: River Esk & North Yorkshire Coastal Streams

Total Area: 568km²

Reasons for designation

Failure, or risk of failure, of the bathing waters at Staithes, Runswick Bay, Sandsend and Robin Hoods Bay to meet the revised Bathing Water Directive standards due partly to faecal indicator organisms (FIOs) from agriculture.

Sedimentation in the River Esk and its tributaries causing problems with breeding success for freshwater pearl mussel, a UK Biodiversity Action Plan Priority Species with a declining population.

Priorities

Bathing Water – **Staithes, Runswick Bay, Sandsend and Robin Hoods Bay**

Good Ecological Status – **Stonegate Beck**, a tributary of the River Esk

Objectives

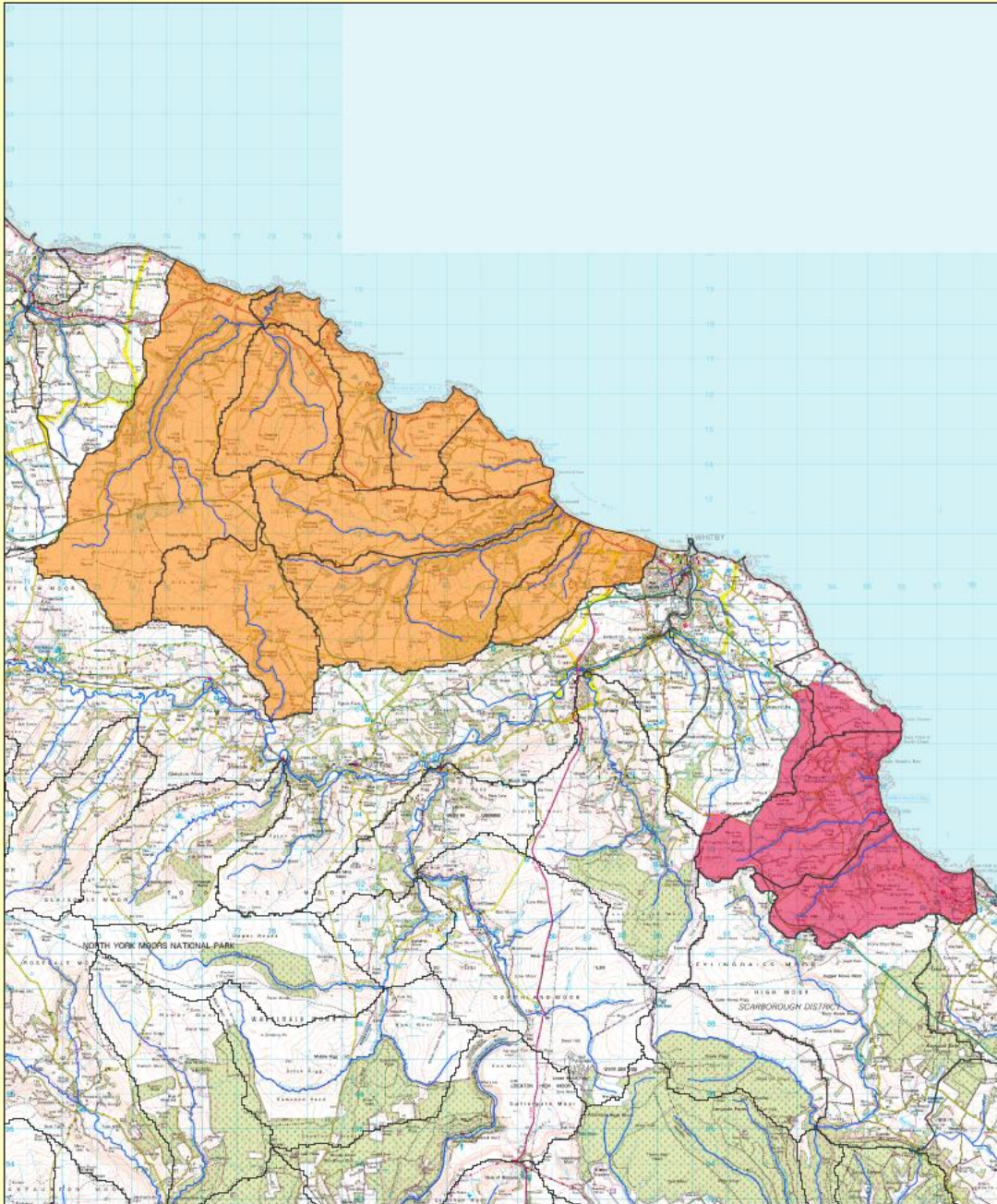
- Reduce the transmission of FIOs to water courses through appropriate changes to slurry and manure management and improvements to farm infrastructure.
- Reduce the loss of sediment through appropriate changes in land management and improvements to farm infrastructure.

Delivery

- Training and advice will continue to build on existing work in the Coastal Streams areas and will concentrate on whole farm plans, slurry and manure handling, nutrient management planning and farm infrastructure improvements.
- CSF will work jointly with the Esk Pearl Mussel and Salmon Recovery Project in Stonegate Beck to target training and advice to reduce sediment and nutrient loss to the watercourse.

Targeting Map

Staithes and Robin Hoods Bay Catchment Sensitive Farming Target Areas



- WFD River Waterbody Catchments © Environment Agency
- WFD River Waterbodies © Environment Agency
- Robin Hoods Bay Target Area
- Staithes Target Area

Scale (at A3): 1:105,000

© Crown copyright and database right
2011. Ordnance Survey 100022021.

Map produced on 19/12/2011 by Gemma Smith
GI and Analysis Services Team, Natural England
Job Reference: 110019

